



**SAP® BUSINESS PLANNING AND
CONSOLIDATION 10.1**, VERSION FOR SAP NETWEAVER,
POWERED BY SAP HANA
STARTER KIT FOR USGAAP, SP03

Installation Guide



TABLE OF CONTENTS

A.	CONTENTS OF THE STARTER KIT	4
B.	PREPARING TO INSTALL THE STARTER KIT.....	5
1.	Software Prerequisites	5
2.	Starter Kit Prerequisites.....	5
C.	INSTALLING THE STARTER KIT	6
1.	Running the Backup & Restore transaction.....	6
2.	Configuring the Starter Kit.....	8

A. CONTENTS OF THE STARTER KIT

The starter kit is a comprehensive set of software configuration objects and samples of consolidated data shipped in an archive file of the type "ZIP". It can be downloaded from SAP Service Marketplace at <http://service.sap.com/patches> after navigating to the section "Browse our Download Catalog / SAP Application Components/ SAP BPC FOR SAP NETWEAVER / SBOP PC 10.0 FOR SAP NW/ Entry by Component / SAP PC 10.0 NW HANA SK USGAAP / #OS independent".

During the extraction of this archive file, a new subfolder named FILES is created in the destination folder. It contains an archive file of ZIP type which is needed to restore the starter kit with SAP Planning and Consolidation backup/restore features.

Recent documentation related to the starter kit is also available on SAP Service Marketplace. It can be downloaded from <http://service.sap.com/instguides> after navigating to the section "Analytics / Enterprise Performance Management / Planning and Consolidation / 10.0, version for SAP NetWeaver". This documentation can also be accessed from the SAP Help Portal at <http://help.sap.com/>.

This documentation notably consists of:

- This installation guide explaining how to install the starter kit.
- A configuration overview which gives a simplified description of all categories of objects included in the starter kit.
- A full description of the design principles which were taken into account to fulfill the consolidation business requirements.
- A data entry guide explaining how to collect data from reporting units to be consolidated.
- An operating guide which specifies how to complete a consolidation cycle using the starter kit.

Note: The screenshots included in this documentation have not been updated to BPC version 10.1 and might not reflect the exact current user interface.

B. PREPARING TO INSTALL THE STARTER KIT

1. Software Prerequisites

1.1. SAP Planning and Consolidation

The starter kit requires **SAP Planning and Consolidation 10.1 – Classic mode, version for SAP Netweaver (or SAP Netweaver on HANA) with Support Package 00** or any higher version to be restored and operated.

The following SAP notes should be installed: 1925891, 1925892.

1.2. SAP HANA

BPC and the starter kit require a **HANA 1.0 Patch 70** (or higher)

1.3. EPM Add-in Excel Client

The starter kit is shipped with Excel reports leveraging the SAP EPM Excel add-in.

The starter kit requires **SAP Planning and Consolidation, add-in for Microsoft Office version 10.0 with Support Package 16 and build 8602 (10.0 SP 16. NET 4)** or any higher version to be restored and operated

1.4. Microsoft Office

The starter kit is shipped with Excel reports leveraging the SAP Planning and Consolidation, add-in for Microsoft Office. Most of these reports use the latest specific Microsoft Excel 2007 features in terms of calculation formulas, themes for cell formats and conditional formatting. Therefore, it is mandatory to install Microsoft Office 2007 or 2010 on client computers to use these Excel reports.

2. Starter Kit Prerequisites

2.1. Granting Access to the NetWeaver system

The **Environment** is restored on the NetWeaver system using a standard software backup/restore feature.

Therefore, SAPgui must be installed and access to the NetWeaver system must be granted. The user must also have the right to run the transaction **UJBR** on this system, which is the transaction that performs the backup or restoration of a BPC environment.

2.2. Starter Kit users

For a better usability of the Business Process Flows (BPF) and Workstatus features with the starter kit, please create the following users in the transaction **SU01**.

CONSOMNGR

LOCALUSER

ADMIN

Then, later on in the BPC Web Administration client, these users will have to be added to their respective team.

CONSOMNGR > Consolidation Manager Team

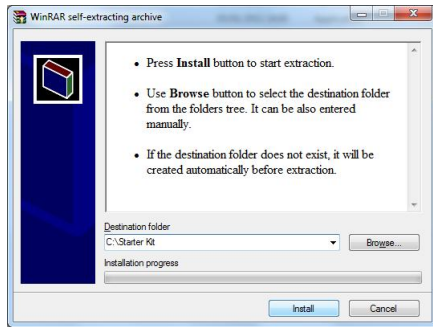
LOCALUSER > Data Entry Users Team

ADMIN > Administrator Team

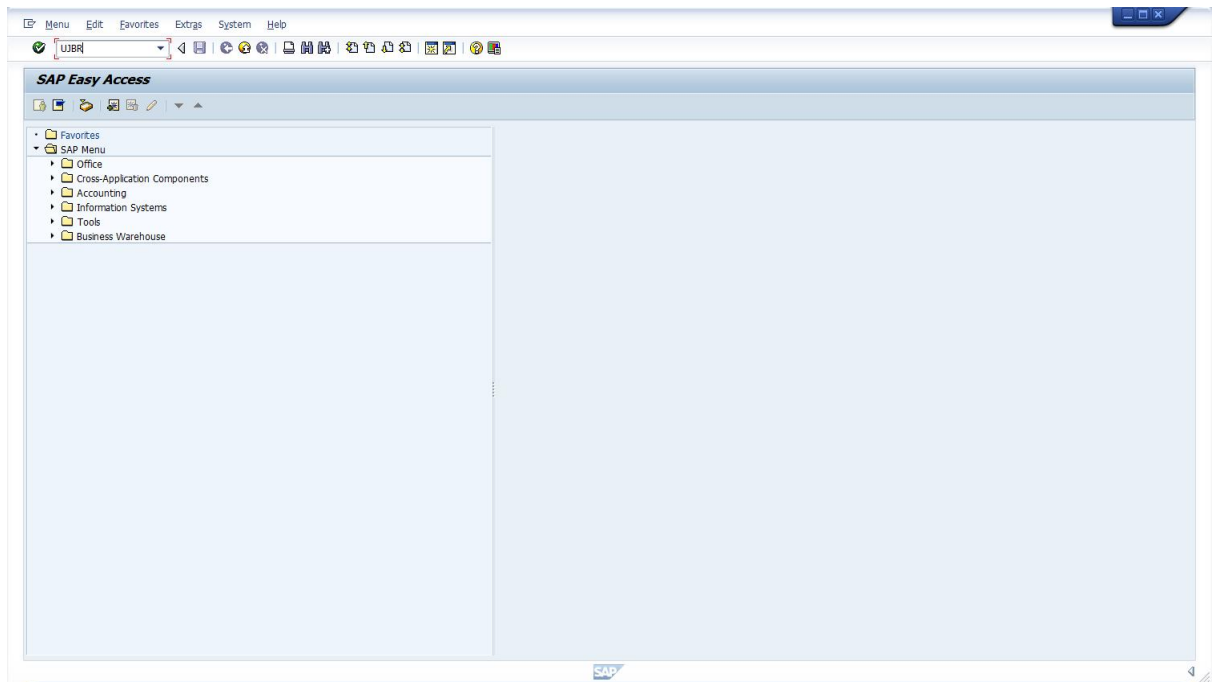
C. INSTALLING THE STARTER KIT

1. Running the Backup & Restore transaction

1. Extract the content of the starter kit archive file to a folder located on the user machine. For example C:\Starter Kit.



2. Connect to the SAP NetWeaver system where Planning and Consolidation is installed and run the transaction named UJBR.

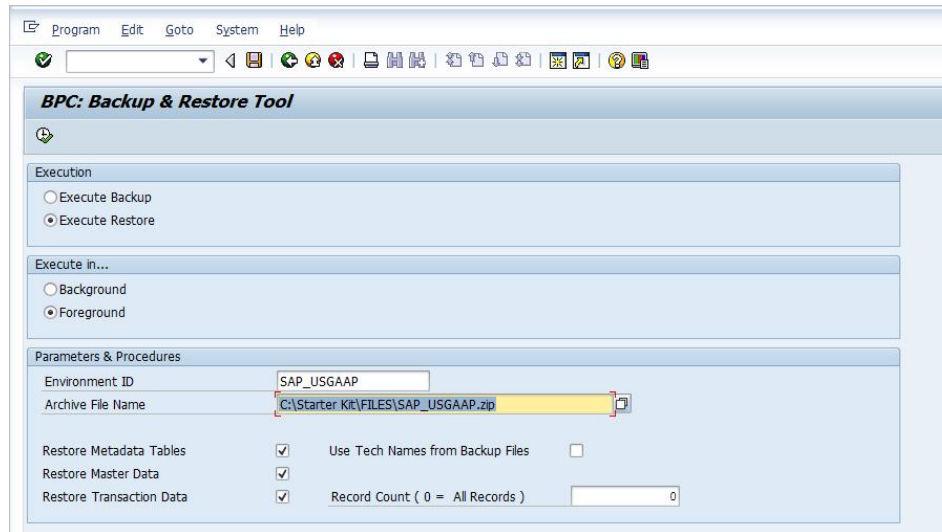


3. The **Backup & Restore** tool user interface shows up. Choose the **Execute Restore** option in the **Execution** section and **Foreground** option in the **Execute in...** section.

Then, in the **Parameters & Procedures** section, specify the name of the environment which is to be restored. This does not have to be the same as the environment name used in the backup. But if it is the same, the environment cannot already exist. You must first delete the environment before trying to restore it on the target system.

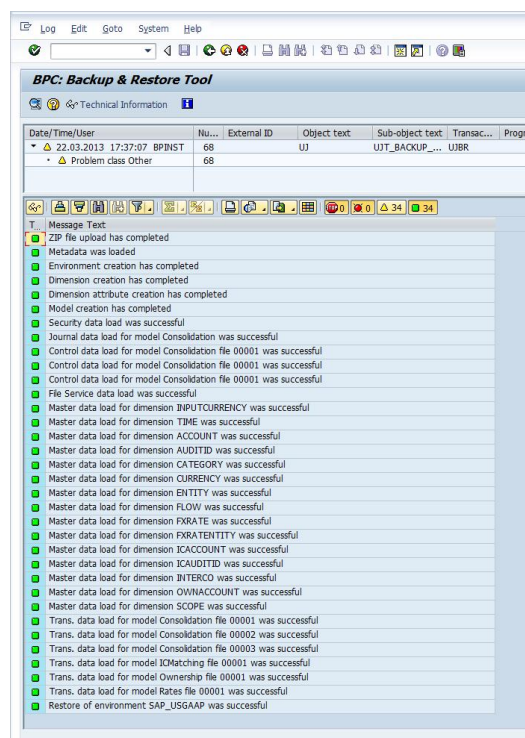
Also supply the location of the backup file “SAP_USGAAP.zip”, which has been previously extracted (step 1). In this example, the file is on C:\Starter Kit\FILES\SAP_USGAAP.zip.

Lastly, select all three checkboxes “Restore Metadata Tables”, “Restore Master Data” and “Restore Transaction Data” to do a full restoration of the application set and enter “0” in the “Record count” field to ensure that all transaction data is correctly restored.



4. Finally, click the **Execute** button to start the restore. A series of status messages on the status bar is displayed to indicate which step of the restore process is being completed.

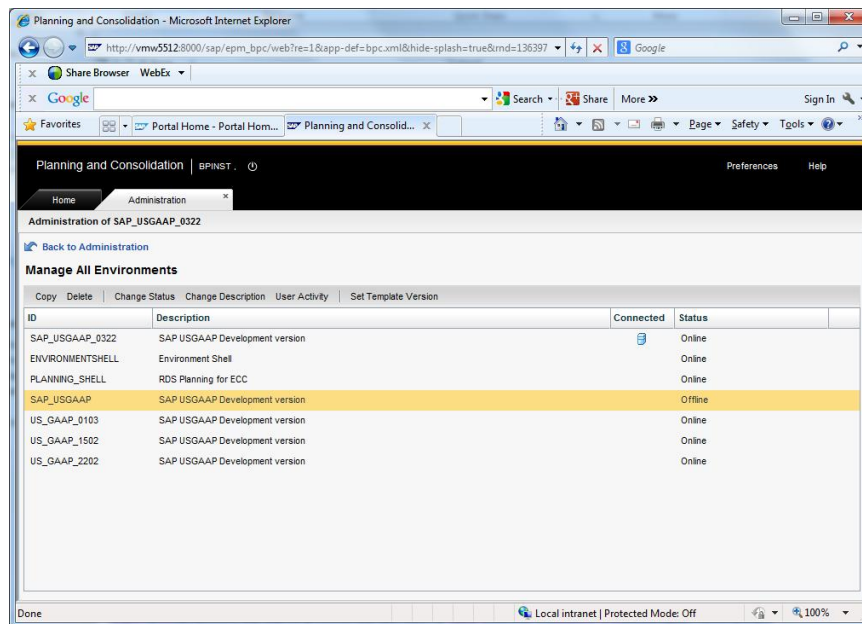
Once the restore is completed, a message screen appears displaying any messages that have been generated during the process. Verify that no error occurred. A warning stating that some users do not exist is normal as they are not transmitted and environment dependant (transaction SU01).



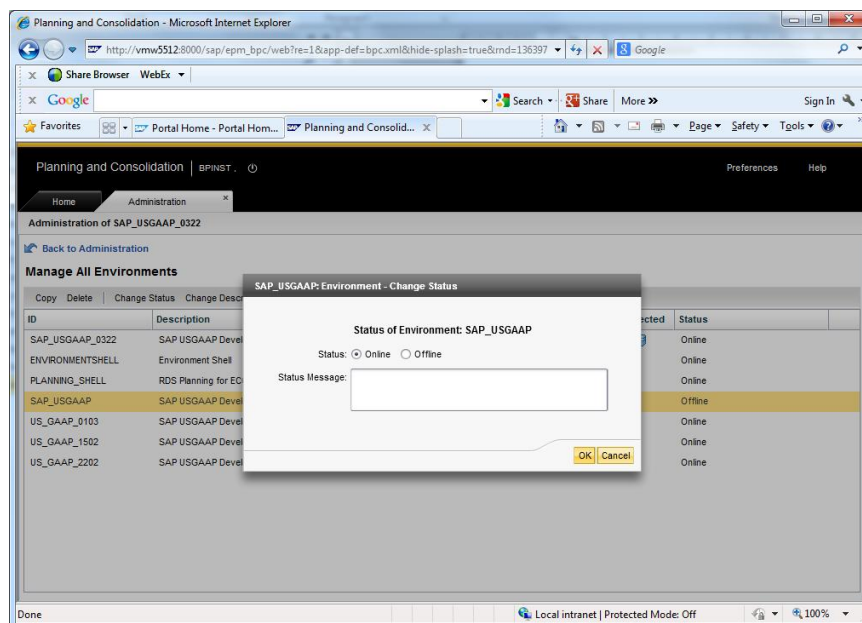
2. Configuring the Starter Kit

Setting the environment status to online

1. Logon to **Planning and Consolidation** through the Web client and select the Starter Kit environment. Then, launch **Planning and Consolidation Administration** and click the **Manage all Environments** button.



2. Select the Starter Kit environment and click the **Change Status** button. In the dialog box that shows up, choose the **Online** option and click **OK** to close the dialog box.



© 2013 SAP AG. All rights reserved.

SAP, R/3, SAP NetWeaver, Duet, PartnerEdge, ByDesign, SAP BusinessObjects Explorer, StreamWork, SAP HANA, and other SAP products and services mentioned herein as well as their respective logos are trademarks or registered trademarks of SAP AG in Germany and other countries.

Business Objects and the Business Objects logo, BusinessObjects, Crystal Reports, Crystal Decisions, Web Intelligence, Xcelsius, and other Business Objects products and services mentioned herein as well as their respective logos are trademarks or registered trademarks of Business Objects Software Ltd. Business Objects is an SAP company.

Sybase and Adaptive Server, iAnywhere, Sybase 365, SQL Anywhere, and other Sybase products and services mentioned herein as well as their respective logos are trademarks or registered trademarks of Sybase Inc. Sybase is an SAP company.

Crossgate, m@gic EDDY, B2B 360°, and B2B 360° Services are registered trademarks of Crossgate AG in Germany and other countries. Crossgate is an SAP company.

All other product and service names mentioned are the trademarks of their respective companies. Data contained in this document serves informational purposes only. National product specifications may vary.

These materials are subject to change without notice. These materials are provided by SAP AG and its affiliated companies ("SAP Group") for informational purposes only, without representation or warranty of any kind, and SAP Group shall not be liable for errors or omissions with respect to the materials. The only warranties for SAP Group products and services are those that are set forth in the express warranty statements accompanying such products and services, if any. Nothing herein should be construed as constituting an additional warranty.

