

Upgrade Guide

SAP Asset Intelligence Network and SAP Asset Strategy and
Performance Management

2019-03-30

CUSTOMER

Upgrade Guide for SAP Asset Intelligence Network and SAP Asset Strategy and Performance Management

Typographic Conventions

Type Style	Description
<i>Example</i>	Words or characters quoted from the screen. These include field names, screen titles, pushbuttons labels, menu names, menu paths, and menu options. Textual cross-references to other documents.
Example	Emphasized words or expressions.
EXAMPLE	Technical names of system objects. These include report names, program names, transaction codes, table names, and key concepts of a programming language when they are surrounded by body text, for example, SELECT and INCLUDE.
Example	Output on the screen. This includes file and directory names and their paths, messages, names of variables and parameters, source text, and names of installation, upgrade and database tools.
Example	Exact user entry. These are words or characters that you enter in the system exactly as they appear in the documentation.
<Example>	Variable user entry. Angle brackets indicate that you replace these words and characters with appropriate entries to make entries in the system.
EXAMPLE	Keys on the keyboard, for example, F2 or ENTER.

Contents

1	About this Document	4
1.1	Target Audience	4
2	Assign New Roles to Role Group	5
2.1	Assigning New Roles to the Role Groups	5
3	Importing Fiori Launchpad Content	6
3.1	Fiori Launchpad	6
3.2	SAP Asset Intelligence Network or SAP Asset Strategy and Performance Management Application	6

1 About this Document

This document describes procedures that are to be carried out by customers or partners of *SAP Asset Intelligence Network* (SAP AIN) and *SAP Asset Strategy and Performance Management* (SAP ASPM) application while upgrading to a newer release.

These procedures involve the following topics:

- Assigning new roles to the role groups
 - Steps to be performed to assign roles that have recently been made available to respective role groups.
- Importing the latest Fiori Launch pad site content for the new release
 - Procedure to import new SAP AIN or SAP ASPM content into the Fiori Launchpad.

1.1 Target Audience

This guide is intended to provide documentation support for organization administrators or the operations team performing tasks to upgrade an existing SAP AIN or ASPM system to a more up-to-date release.

2 Assign New Roles to Role Group

The system is to be updated and you receive information that the provider account has been prepared for you with the new SAP AIN or SAP ASPM applications and new roles, if any.

2.1 Assigning New Roles to the Role Groups

You use this procedure to assign roles that have recently been created to their respective groups. To do this, proceed as follows:

1. Go to the SAP HANA Cloud Platform Cockpit and select your appropriate consumer account.
2. On the navigation pane, choose *Authorizations*
3. Provide the *User* details and choose *Show Assignments*.
4. Choose the *Roles Assign* button.
5. From the Assign roles to user screen, choose the new roles, if relevant.
6. Select your provider *Account* and choose the relevant *Application*.
7. Select the following *Roles* and assign them to corresponding *Groups*
8. Save your entries.

3 Importing Fiori Launchpad Content

Prerequisites

- Your user is an FLP administrator in the HCP cockpit.
- Your user have TENANT_ADMIN role.
- Your SAP user has been assigned the role of an administrator in the SCP consumer account.
- You have downloaded the latest version of the SAP FLP content:
 - *SAP Asset Intelligence Network*:
<https://help.sap.com/doc/28697a5caf2b4aee980a1d604da3ab8f/1906/en-US/AIN%20Only.zip>
 - *SAP Asset Strategy and Performance Management*:
<https://help.sap.com/doc/26e883ff168548e7a1bda1c566cb7a86/1906/en-US/ASPM%20Only.zip>

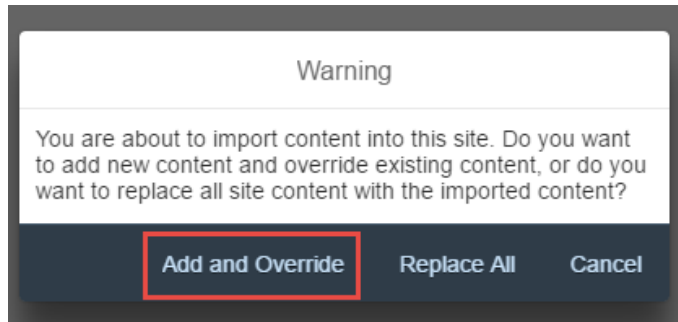
3.1 Fiori Launchpad

1. Navigate to the Fiori Launchpad.
The *SAP Cloud Platform Identify Authentication Administration Console* screen appears.
2. Choose *Application & Resources* → *Application*
3. Select the relevant *Application* → *Home URL* and choose *visit*.
OR
4. In the HCP cockpit, navigate to your consumer account and select *Subscription*.
5. In the *Subscribed HTML5 Applications section*, choose *flpnc*.
6. The *Active Version* page displayed along with the application URL.
7. Right click on the *Application URL* link and copy the link address.

3.2 SAP Asset Intelligence Network or SAP Asset Strategy and Performance Management Application

1. Navigate to the SAP AIN or SAP ASPM application homepage by pasting the copied URL into a new browser window.
2. On the home page, choose your user icon and select *Manage Site*.
3. In the section *Services and Tools*, choose *Transport Manager*.
4. Make sure you navigate to the *Import* section of the content transport.
5. Select *Browse* to select the file that you have downloaded from:
 - *SAP Asset Intelligence Network*:
<https://help.sap.com/doc/28697a5caf2b4aee980a1d604da3ab8f/1906/en-US/AIN%20Only.zip>

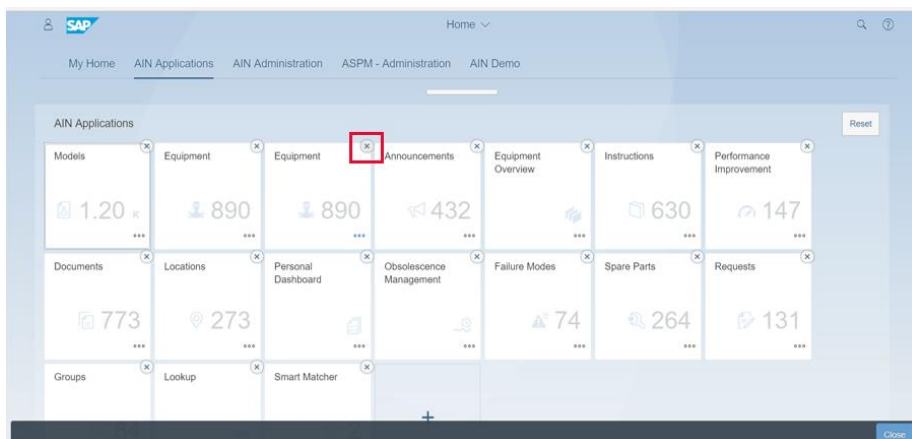
- o [SAP Asset Strategy and Performance Management:](https://help.sap.com/doc/26e883ff168548e7a1bda1c566cb7a86/1906/en-US/ASPM%20Only.zip)
<https://help.sap.com/doc/26e883ff168548e7a1bda1c566cb7a86/1906/en-US/ASPM%20Only.zip>
6. Choose *Import* on the bottom right corner of the *Transport Manager* screen.
 7. Choose *Add & Override* and enter your *user credentials* and *e-mail address* when requested.



Note

In case Step 6 (import fails) does not import, navigate to *Settings* → *Edit* and in *Systems Setting* tab change the **SAPUI5 Custom 1.61.2** version and save your entries.

8. In case you have custom catalogs and groups created other than the standard defined as part of AIN or ASPM FLP content package, check if the appropriate roles are still assigned at the custom catalogs and groups level. In case they are removed, reassign the roles before publishing the content.
9. In case there is any custom theme assigned in your account and want to retain them, follow step no 11 and 12.
10. Navigate to section *Services and Tools* and select *Theme Manager*.
11. Select your desired theme and select *Assign to Site*.
12. When the import has been successfully performed, publish the site to view the changes.
13. In case of duplicate tiles, you have an option to delete them. Follow steps 15 and 16.
14. Navigate to Home page and click on user icon and select *Edit Home Page*.
15. Remove the duplicate tiles and choose *Close*.



16. Check and confirm that the apps that have been removed from the home page work correctly.
17. In case you have additional **Groups** and associated **Roles** and are not visible in FLP after upgrade, follow below steps:

-
1. Go to Manage Site
 2. Select *Groups*.
 - Go to *Roles*.
 - Click on *Edit*.
 - Assign desired roles.
 - Save your entries.
 3. Select *Roles*.
 - Go to *Groups*.
 - Click *Edit*.
 4. Assign Groups.
 5. Save your entries and publish the changes.

Note

If you need any support with upgrade, please create a new customer incident under IOT-AIN and IOT-ASM or use the standard SAP Support Process (support.sap.com).



www.sap.com/contactsap

© 2019 SAP SE or an SAP affiliate company. All rights reserved.
No part of this publication may be reproduced or transmitted in any form or for any purpose without the express permission of SAP SE or an SAP affiliate company.
SAP and other SAP products and services mentioned herein as well as their respective logos are trademarks or registered trademarks of SAP SE (or an SAP affiliate company) in Germany and other countries. All other product and service names mentioned are the trademarks of their respective companies. Please see <http://www.sap.com/corporate-en/legal/copyright/index.epx#trademark> for additional trademark information and notices.

Material Number:

