

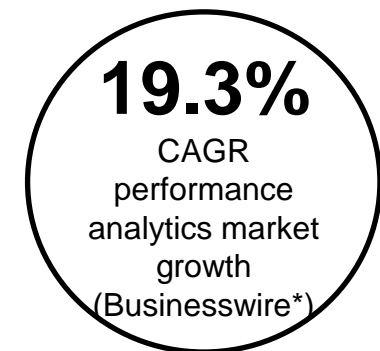
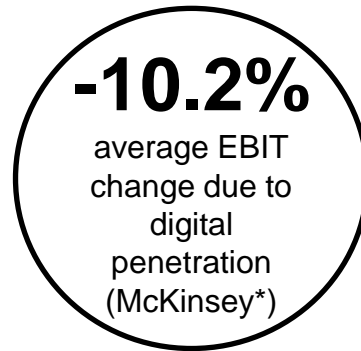
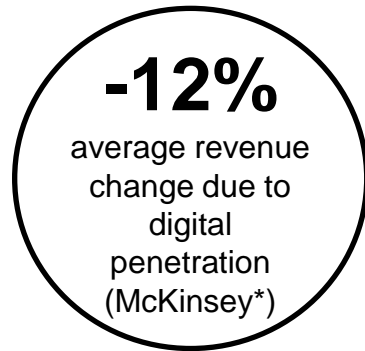


# SAP Profitability and Performance Management

## Profitability and Cost Management Content

## In a nutshell ...

*„Digitization is putting pressure on revenue and profit growth.“*



***Profitability and Cost Management** enables you to calculate, analyze and simulate your enterprise profitability and cost on product, channel and customer level in high speed.*

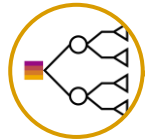
# What is the value of this Sample Content?



Fast implementation thanks to predefined content, SAP S/4 HANA and SAP ERP integration.



Covers best practices assignments, activity based costing and top-down allocations for costs and revenues.



Analyze and adjust drivers easily.



Follow the money flow with powerful visualizations.

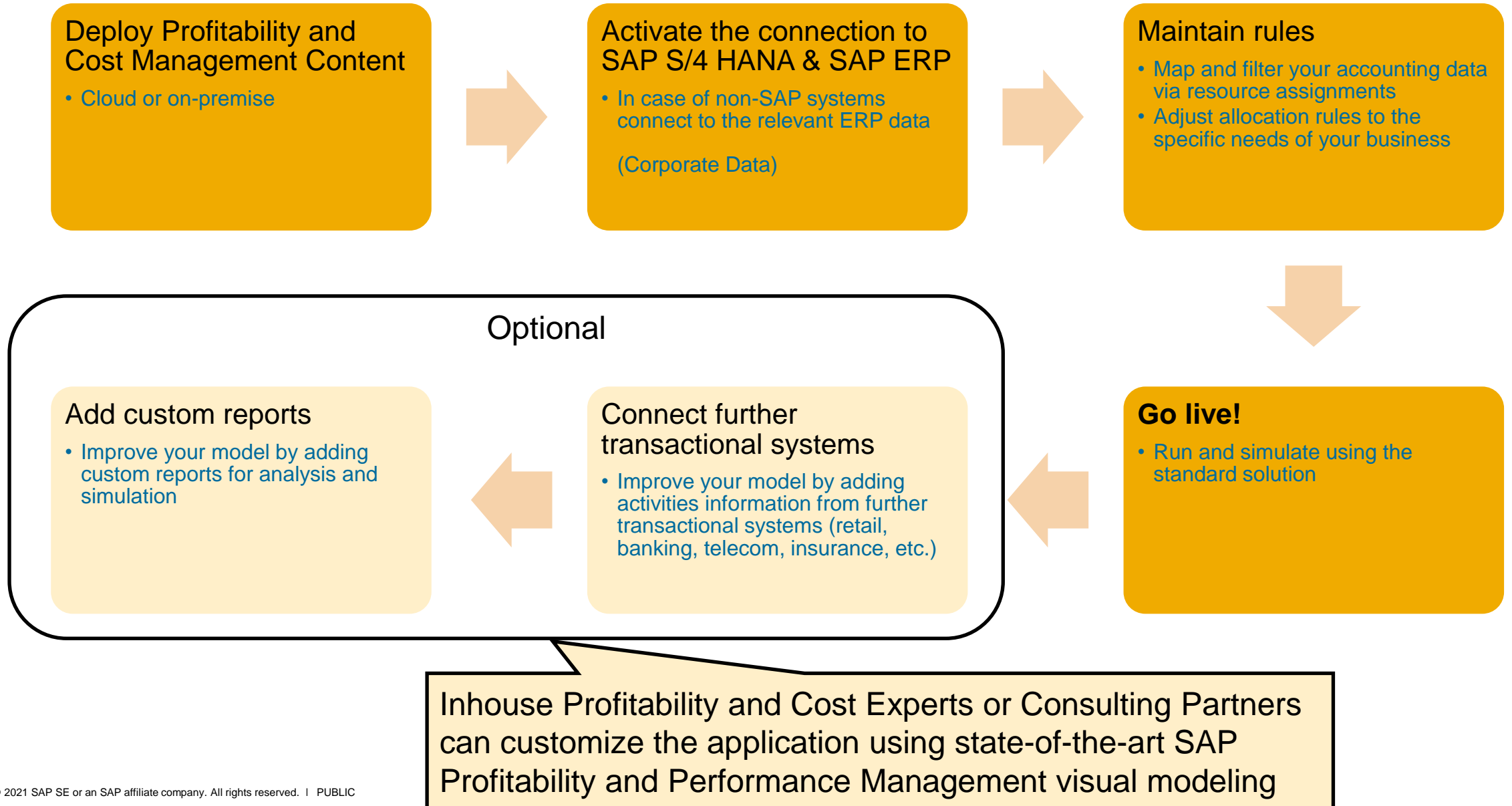


Leverage built-in simulation capabilities.



Benefit from high calculation speed on huge data volumes.

# What should SAP customers do?



# Model

## Uses Your Most Trusted Data

- Connects to your financial accounting data as the primary source.

## Uses Best Practices

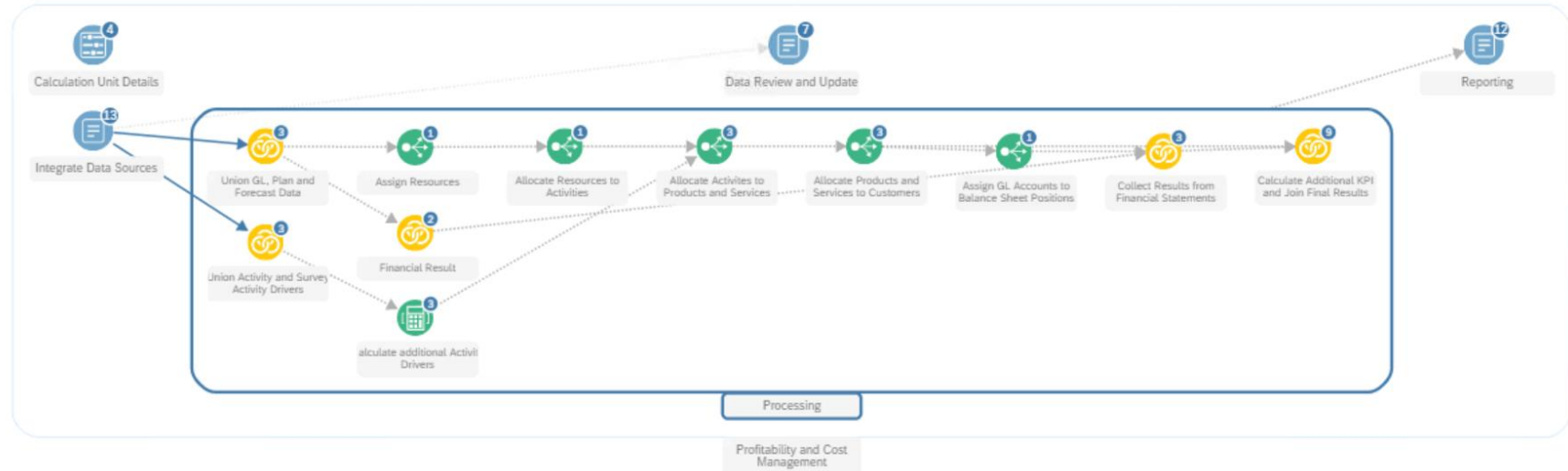
- Uses best practices to assign resources and allocate down to product, channel and customer level.

## Built-in Traceability

- Calculates on granular level throughout the whole process.

## Ready for Actual and Plan

- Allows to compare actuals and plan results side-by-side.



# Workflow

## Predefined Process Template

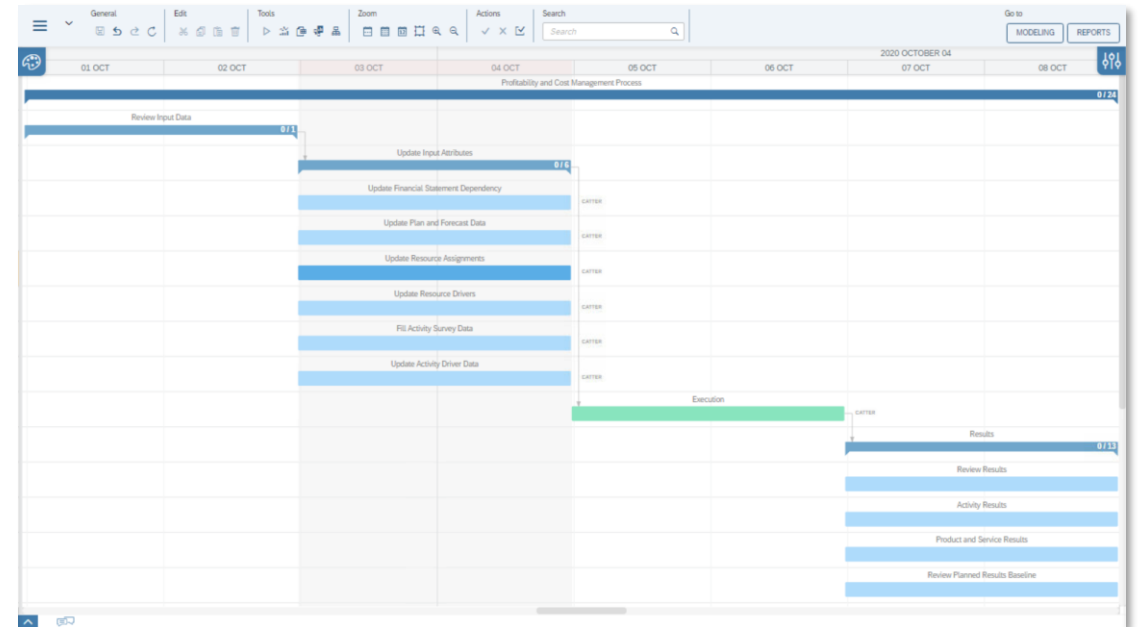
- A predefined process template orchestrates the periodic profitability process in the company and the teams involved. It comprises all activities with their dependencies and can be easily adapted, if needed.

## Workflow

- A four-eyes principle workflow can be used to further structure the review process with submissions and approvals.

## Traceability and Auditability

- The execution of all activities is logged and permanently available for evaluations and audits.



# Simulation and Reporting

## Predefined Reports

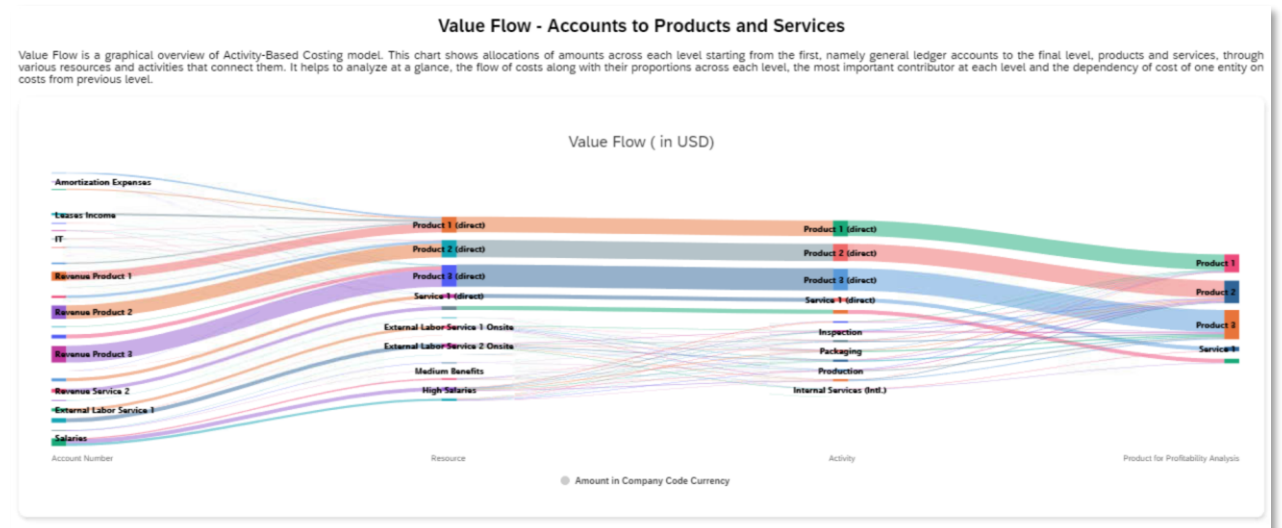
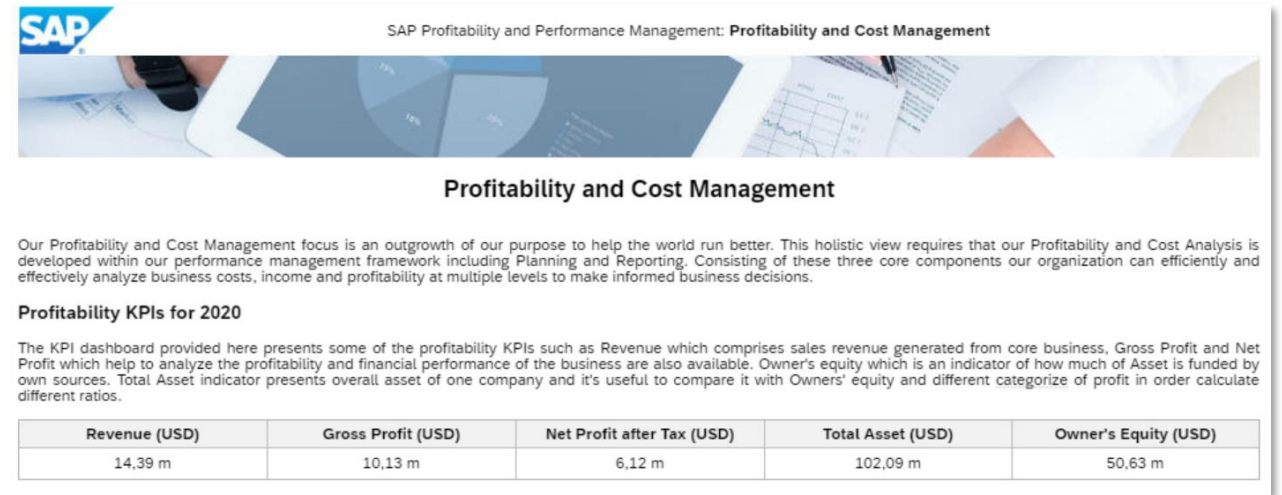
- Predefined results reports include visualizations and KPIs for revenue, gross profit, net profit after tax, total asset, owner's equity and thus optimization potential, which are easily adjusted to individual needs.

## Interactive What-If Simulation

- Built-in simulation capabilities allow to calculate the model with different parameters and assumptions.

## Ad-hoc analysis

- The ad-hoc analysis provides pivot tables and charts with powerful drill-down, slice and dice capabilities for large-scale data.



# Summary

- The predefined Profitability and Cost Management content ensures a short implementation time.
- The prepared integration with SAP S/4 HANA and SAP ERP ensures a high degree of automation.
- It can work directly on original financial data without data redundancy.
- The rule set covers best practices assignments, activity based costing and top-down allocations for costs and revenues.
- The modern user interface is attractive for controlling and finance experts. It is ideal to extend the model without coding.
- Comprehensive reporting and what-if simulation capabilities help analyze and optimize profitability, costs and efficiency.