



Introduction to Integration Framework for SAP Business One 2.0

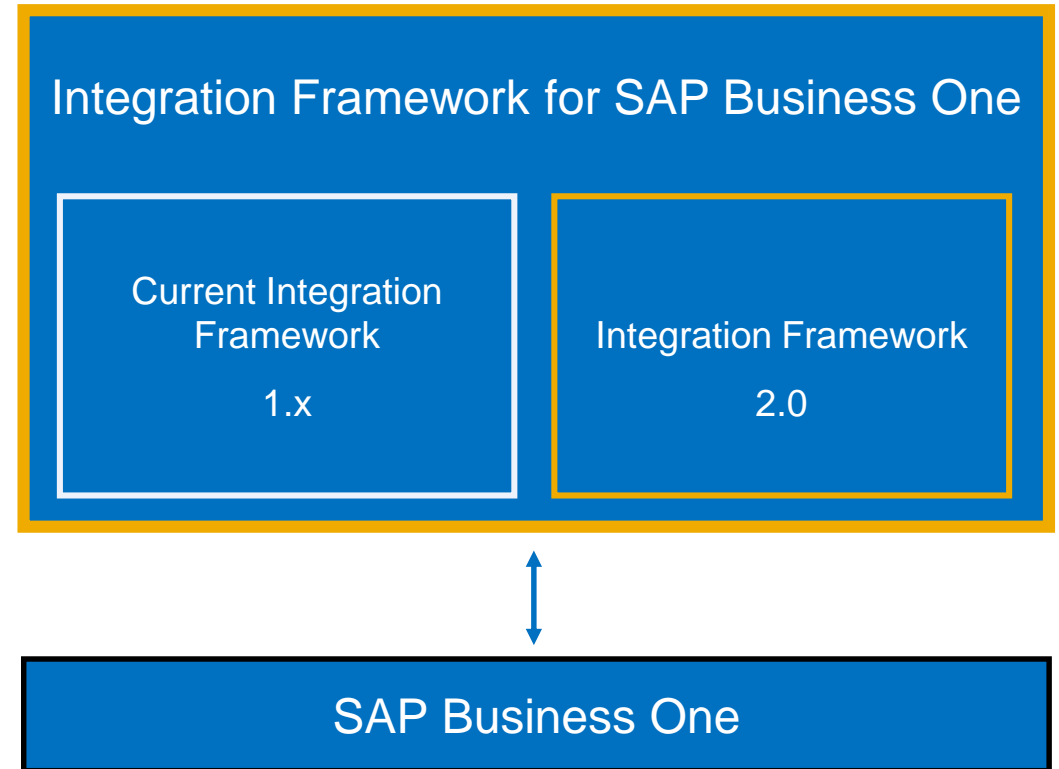
Global Roll-out, SAP
January, 2020

PUBLIC

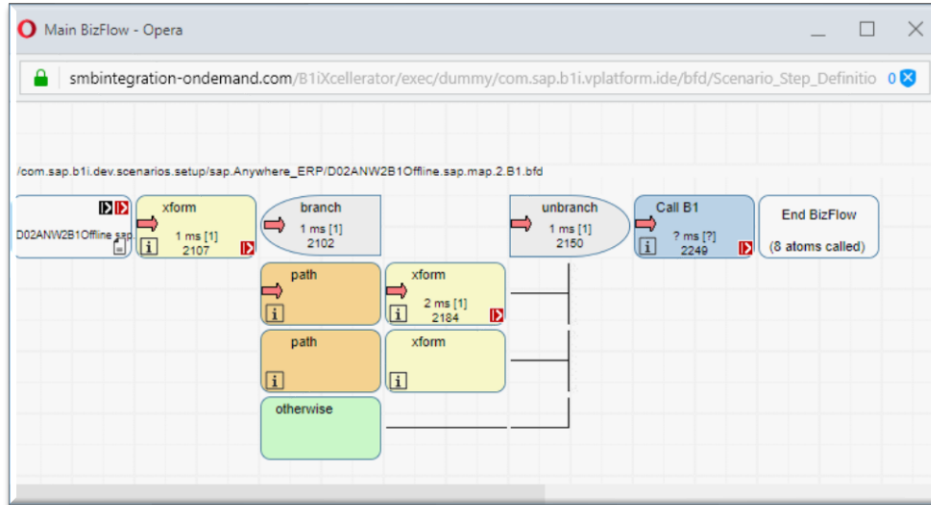
What you need to know about Integration Framework for SAP Business One 2.0

Integration Framework 1.x and 2.0

- After installation and upgrade as of SAP Business One 9.3 PL04, both versions are available with different access URLs
- Access URL to Integration Framework 2.0:
`http://<host>:<port>/B1iXcellerator/exec/dummy/com.sap.b1ip.system.c/bfd/AdminConsole.bfd?!defdoc=/com.sap.b1i.common/menu/opdev.xml`
- Both versions are independent
 - No runtime conflicts
 - You can run packages of both versions simultaneously
- Current 1.x framework will continue to be supported
- For more information, see SAP Note [2638618](#) - New Version Integration Framework 2.0 Added to Integration Framework 1.X (login required)

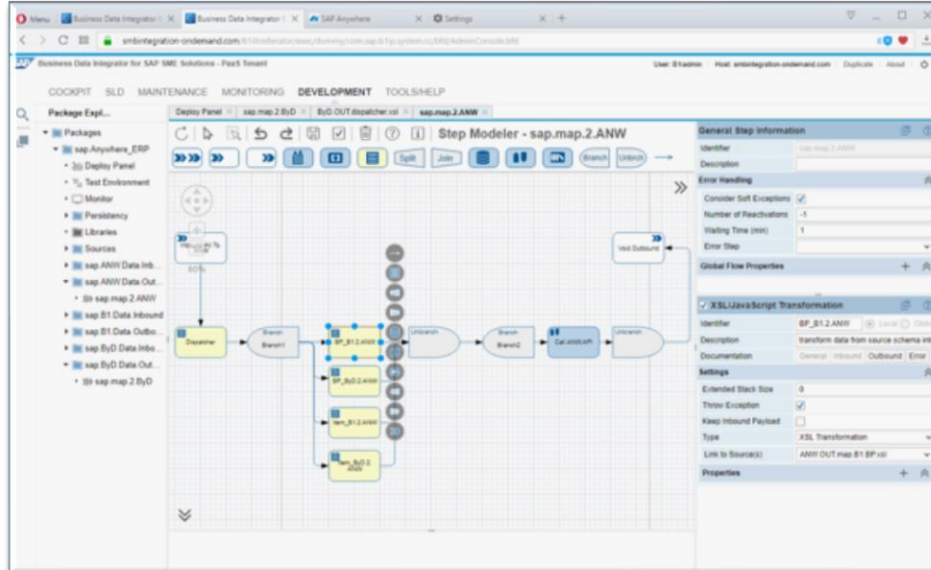


New Programming Model for Scenario Design



Integration Framework 1.x

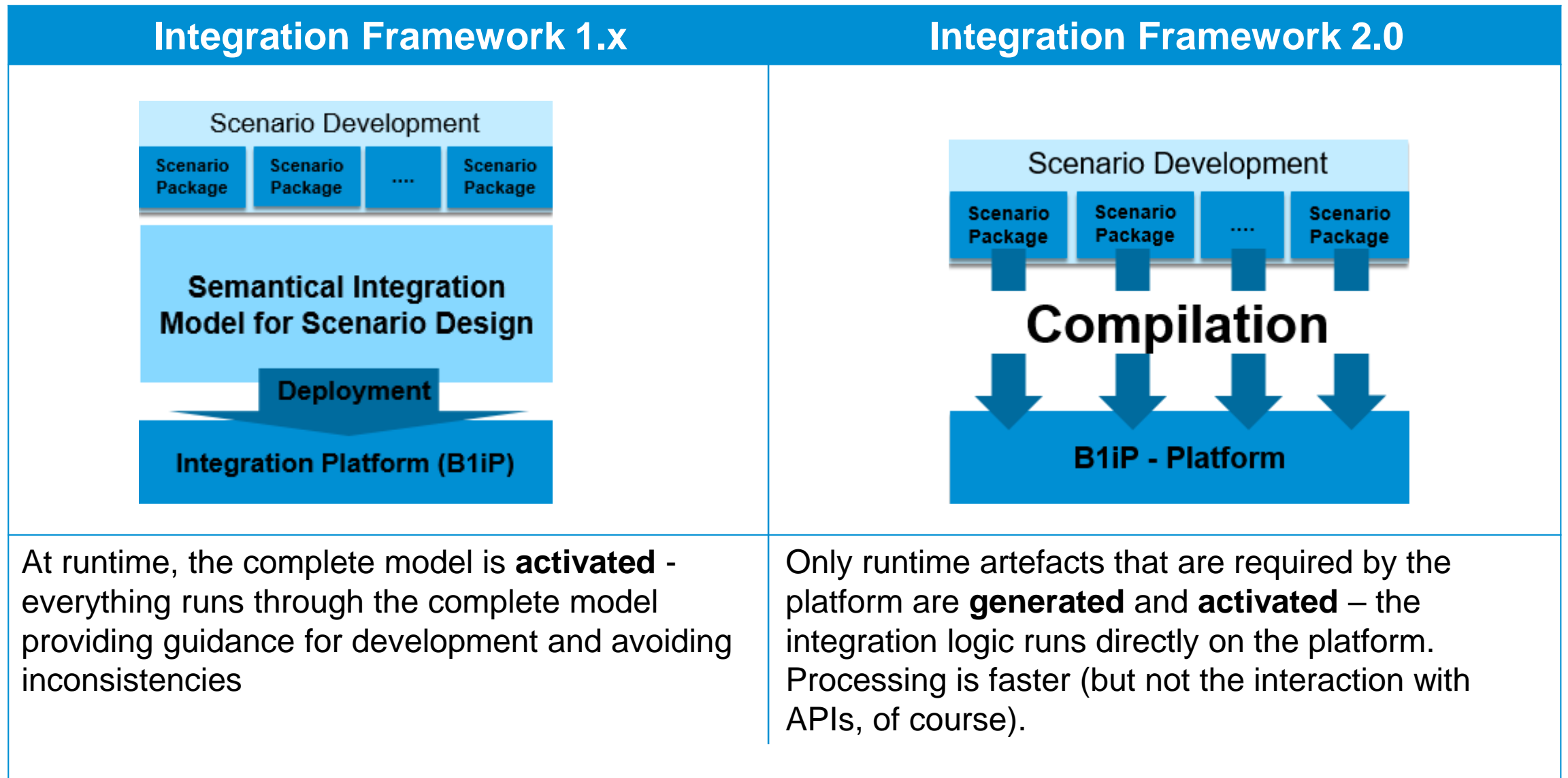
- **Single** tenant integration model only
- Makes use of the *Semantic Integration Model*: UI-supported scenario design, inbuilt value mapping, consistency checks, and so on



Integration Framework 2.0

- New and modern Web-based IDE
- **Single** and **Multiple** tenant integration model, multi-tenancy supports cloud deployments
- Also programming model for **Internet of Things** (IoT)

Integration Framework 2.0 Faster at Runtime



Benefits of the Integration Framework 2.0 Programming Model

- Comes **in addition** with the integration framework – all programming models can run at the same time in parallel
- Optimized for **cloud computing**
- Inbuilt **multi-tenancy**
 - More flexibility in scenario deployments
- Built to address all **integration developers**
 - Higher flexibility
 - More control and transparency when developing integration content
 - "Classical" developers feel more comfortable because of the new browser-based IDE
- Up to **10 times faster** – runs directly on top of the integration platform
- Does **not replace** the current programming model
- Migration of existing scenario packages **not required**, unless you want to make use of multi-tenancy in cloud environments

Integration Framework for SAP Business One 2.0

Menus and Functions

All Design-Related Functions in the Web-based IDE

The screenshot displays the SAP Integration Framework Step Modeler interface. On the left, a **Navigation Tree** shows a hierarchical view of packages and test suites. The main workspace is a **Design Area** containing a workflow diagram with steps like B1ifHelperIN, InitializeB1ifMsg, atom1, SQLCall, atom3, Branch Branch1, Persist1, SQLCall, Unbranch, atom6, and VoidOut. A **Notification Area** is located at the bottom left. The top of the interface features **Multiple Tabs** for different project files. On the right, a **Details Area with Zoom** provides configuration for the selected 'SQLCall' step, including 'Error Handling' and 'Adapter Call in BizFlow' settings.

Navigation Tree

- Packages
 - sap.devTestSuite
 - Deployment Panel
 - Test Environment
 - Monitor
 - BPM
 - Persistency
 - Libraries
 - Sources
 - js
 - xml
 - xsl
 - sap.B1ifHelper.Tests
 - sap.B1ifHelper
 - sap.Enqueue.Tests
 - sap.Enqueue.Trigger
 - sap.Enqueue.Worker
 - sap.ExternalCalls.Tests
 - sap.FlowCalls.Tests
 - sap.Inbound.Tests
 - sap.B1.IN.02.SysId.Fix
 - sap.B1.IN.06.SLD
 - sap.CRON.IN.01.Direct
 - sap.CRON.Inbound
 - sap.DBQ.IN.Fix
 - sap.File.IN.01.Direct
 - sap.File.IN.02.SysId.Fix
 - sap.File.IN.06.SLD
 - sap.HTTP.IN
 - sap.MultipleQ.IN
 - sap.MultipleQ.IN.fix

Multiple Tabs

Deployment Panel | Monitor | sap.B1ifHelper | B1ifHelper.Tests_B1ifHelper_atominit.xsl | B1ifHelper.Tests_B1ifHelper_atom1.xsl | Configuration | jii.xsl

Design Elements

Step Modeler - sap.B1ifHelper (v. 42)

Error Handling

Consider Soft Exceptions	<input checked="" type="checkbox"/>
Number of Reactivations	-1
Waiting Time (min)	1
Error Step	

Adapter Call in BizFlow

Identifier	SQLCall
Description	[atom2]
XPath Expression	/vpf.Msg/vpf.Body/vpf.Payload[./@id='atom1']*
Adapter Type	JDBC

Inbound Configuration

Outbound Configuration

Identifier	Value
pitype	xml
sysid	
driver	
password	
url	
username	

Design Area

Notification Area

Details Area with Zoom

Five Steps to Activate Package for Customer

Deployment Panel - Multi Tenancy

Scenario Package: sap.devTestSuite

Scenarios: 8

Development Status: ok

Deployment: Deployment(s)

Activation: Deployment(s) active

1 Select Package

2 Add Customer for Deployment

3 Select Scenarios and Steps

4 Assign Systems

5 Activate

Scenario Package	Scenario	Development Status	Deployment	Activation	Systems
sap.B1ifHelper.Tests	sap.B1ifHelper	ok	Incoming B1 Event	Void	Runtime Artefacts Trigger Systems
sap.newhelper2	sap.newhelper2	ok	Incoming B1 Event	Void	Runtime Artefacts Trigger Systems
sap.Enqueue.Tests	sap.Enqueue.Trigger	ok	Internal Queue	Successor Step	Runtime Artefacts Trigger Systems
sap.Enqueue.Tests	sap.Enqueue.Worker	ok	Predecessor Step	Void	Runtime Artefacts Trigger Systems
sap.mainstepwitherror	sap.mainstepwitherror	ok	Timer	Void	Runtime Artefacts Trigger Systems
sap.onerror	sap.onerror	ok	By Exception of Other Step	Void	Runtime Artefacts Trigger Systems

Deploy and activate a scenario package for one or multiple customers

Improvements in System Landscape Directory

The screenshot displays the SAP Integration Framework (SLD) interface. The top navigation bar includes 'SLD', 'SETTINGS', 'MONITORING', 'DEVELOPMENT', and 'TOOLS/HELP'. The user is identified as 'User: B1iadmin' on 'Host: 127.0.0.1:8080'. The left sidebar shows a tree view of system categories, including 'B11 Server', 'Custom', 'File and FTP', 'HTTP', 'Legal Package Systems', 'SAP Business One Systems', 'SAP Systems', 'Test Systems', and 'Web Services'. A context menu is open over the 'B11 Server' node, listing actions such as 'Create Category', 'Create System', 'Import', 'Export', 'SysType Properties', 'Settings', and 'Help'. The main area shows the configuration for a system named 'MX-WS-EDICOM'. It includes a 'General Information' section with fields for Type, Description, Name, and ID. Below this is a 'Connectivity List (Active)' section for an 'HTTA' connection, with fields for destination protocol, host, port, and path. A 'Test Connection' button is present. At the bottom, there is a 'Connectivity List (Passive)' section for an 'HTTP' connection with an 'associatedSrvIP' field. Three callout boxes highlight key features: 'Context Menus' (pointing to the context menu), 'System Categories' (pointing to the left sidebar), and 'Assign Systems with Drag&Drop' (pointing to the main configuration area).

Also available with integration framework for SAP Business One 1.x

Easy BizStore Access in the Integration Framework

Explorer

- vBIU.sap.GetExtensionList
- vBIU.sap.GetExtensionList2
- vBIU.sap.GetHomeExtensionList
- vBIU.sap.GetItemCount
- vBIU.sap.GetItemDetail
- vBIU.sap.GetItemDetail
- vBIU.sap.GetItemPicture
- vBIU.sap.GetMessageList
- vBIU.sap.GetMessageListLegacy
- vBIU.sap.GetOpprDetailByld
- vBIU.sap.GetOpprList
- vBIU.sap.GetPermission
- vBIU.sap.GetPermission2
- vBIU.sap.GetPriceList
 - atom0.xml
 - atom2.xml
 - atom4.xml
 - vBIU.bfd
 - vBIU.xml
 - vVar.xml
- vBIU.sap.GetPriceList1
- vBIU.sap.GetPriceListByType
- vBIU.sap.GetPriceListCount
- vBIU.sap.GetPriceListDetails

atom2.xml

```
<?bpc.pltype.out bpm.pltype=xm1?>
<xsl:stylesheet xmlns:xsl="http://www.w3.org/1999/XSL/Transform" xmlns:b1e="urn:com.sap.bli.sim:b1event" xmlns:b1ie="urn:com.sap.bli.adapter:jdbcadapter" xmlns:rfc="urn:sap-com:document:sap:rfc:functions" xmlns:sim="u
version="1.0" bfa:force="" vpf:force="" jdbc:force="" rfc:force="" b1ie:force="" b1e:force="" xci:force="" sim:f
<xsl:output method="xml" encoding="UTF-8" indent="yes" />
<xsl:param name="atom" />
<xsl:param name="sessionid" />
<xsl:variable name="msg" select="/vpf:Msg/vpf:Body/vpf:Payload[./@Role='S']" />
<xsl:variable name="vptsDoc" select="document('/com.sap.bli.internal/xml/timestamp')" />
<xsl:variable name="vpts" select="concat($vptsDoc/*/@year,'/', $vptsDoc/*/@month,'/', $vptsDoc/*/@date,' ', $vptsDoc
<xsl:variable name="vpSender" select="/vpf:Msg/vpf:Header/vpf:Sender/@Id" />
<xsl:variable name="vpObject" select="/vpf:Msg/vpf:Header/vpf:Sender/@ObjId" />
<xsl:variable name="vpReceiver" select="/vpf:Msg/vpf:Header/vpf:ReceiverList/vpf:Receiver[./@handover='P']/@Id"
<xsl:variable name="vpActivityCode" select="/vpf:Msg/vpf:Header/vpf:Variables/vpf:var[./@id='ActivityCode']/@val
<xsl:variable name="vpAddonType" select="/vpf:Msg/vpf:Header/vpf:Variables/vpf:var[./@id='AddonType']/@value" />
<xsl:variable name="vpAlertID" select="/vpf:Msg/vpf:Header/vpf:Variables/vpf:var[./@id='AlertID']/@value" />
<xsl:variable name="vpAttachmentEntry" select="/vpf:Msg/vpf:Header/vpf:Variables/vpf:var[./@id='AttachmentEntry'
Variables/vpf:var[./@id='AttachmentLine']/
Variables/vpf:var[./@id='AttachmentPath']/
s/vpf:var[./@id='bpCode']/@value" />
s/vpf:var[./@id='callID']/@value" />
les/vpf:var[./@id='CardCode']/@value" />
name="vpCntctCode" select="/vpf:Msg/vpf:Header/vpf:Variables/vpf:var[./@id='CntctCode']/@value" />
name="vpCode" select="/vpf:Msg/vpf:Header/vpf:Variables/vpf:var[./@id='Code']/@value" />
name="vpContactPerson" select="/vpf:Msg/vpf:Header/vpf:Variables/vpf:var[./@id='ContactPerson']/@v
name="vpContractID" select="/vpf:Msg/vpf:Header/vpf:Variables/vpf:var[./@id='ContractID']/@value"
name="vpCount" select="/vpf:Msg/vpf:Header/vpf:Variables/vpf:var[./@id='Count']/@value" />
name="vpDeviceToken" select="/vpf:Msg/vpf:Header/vpf:Variables/vpf:var[./@id='DeviceToken']/@value
name="vpDocEntry" select="/vpf:Msg/vpf:Header/vpf:Variables/vpf:var[./@id='DocEntry']/@value" />
name="vpDocType" select="/vpf:Msg/vpf:Header/vpf:Variables/vpf:var[./@id='DocType']/@value" />
name="vpItemCode" select="/vpf:Msg/vpf:Header/vpf:Variables/vpf:var[./@id='ItemCode']/@value" />
name="vpitemCode" select="/vpf:Msg/vpf:Header/vpf:Variables/vpf:var[./@id='itemCode']/@value" />
name="vpKeyword" select="/vpf:Msg/vpf:Header/vpf:Variables/vpf:var[./@id='Keyword']/@value" />
name="vplistNum" select="/vpf:Msg/vpf:Header/vpf:Variables/vpf:var[./@id='listNum']/@value" />
name="vplogin" select="/vpf:Msg/vpf:Header/vpf:Variables/vpf:var[./@id='Login']/@value" />
name="vpName" select="/vpf:Msg/vpf:Header/vpf:Variables/vpf:var[./@id='Name']/@value" />
name="vpOpprId" select="/vpf:Msg/vpf:Header/vpf:Variables/vpf:var[./@id='OpprId']/@value" />
name="vpPage" select="/vpf:Msg/vpf:Header/vpf:Variables/vpf:var[./@id='Page']/@value" />
name="vpPageIndex" select="/vpf:Msg/vpf:Header/vpf:Variables/vpf:var[./@id='PageIndex']/@value" />
name="vpPageSize" select="/vpf:Msg/vpf:Header/vpf:Variables/vpf:var[./@id='PageSize']/@value" />
name="vpPageTop" select="/vpf:Msg/vpf:Header/vpf:Variables/vpf:var[./@id='PageTop']/@value" />
name="vpServiceCallID" select="/vpf:Msg/vpf:Header/vpf:Variables/vpf:var[./@id='ServiceCallID']/@v
name="vpsql" select="/vpf:Msg/vpf:Header/vpf:Variables/vpf:var[./@id='sql']/@value" />
name="vptablekeynames" select="/vpf:Msg/vpf:Header/vpf:Variables/vpf:var[./@id='tablekeynames']/@v
name="vptablekeyvalues" select="/vpf:Msg/vpf:Header/vpf:Variables/vpf:var[./@id='tablekeyvalues']/
name="vptablename" select="/vpf:Msg/vpf:Header/vpf:Variables/vpf:var[./@id='tablename']/@value" />
name="vpViewMode" select="/vpf:Msg/vpf:Header/vpf:Variables/vpf:var[./@id='ViewMode']/@value" />
```

BizStore Datasets and Groups with Export Function

Open and Edit Documents

Drag & Drop Content to BizStore



Maintenance, Monitoring and Tools/Help Menus

Maintenance	
System Info	System information and profiles
ZIP Import	Importing zip files to BizStore
Configuration	Development prefix, framework ports, server address and proxy information
Customer Administration	Simple customer administration for deployment and monitoring
Deployment Panel	Deployment of packages for customers
User Administration	Administration and runtime users

Tools/Help	
Control Center	Access to control center
Benchmarks	Calculations
XML Editor	Open XML Editor
XSLT Library	Delivered XSLT libraries
Online Help/Documents	Documentation

Monitoring	
BPM Monitor	Monitoring business processes
Transaction monitor	Each scenario step is one transaction. Message log of integration framework 2.0
Error Inbox	Errors in processing and outbound
Service Monitor	Activation and monitoring of delivered integration services
Queue Monitor	Monitoring of internal queues

Thank you.

Follow us



www.sap.com/contactsap

© 2020 SAP SE or an SAP affiliate company. All rights reserved.

No part of this publication may be reproduced or transmitted in any form or for any purpose without the express permission of SAP SE or an SAP affiliate company.

The information contained herein may be changed without prior notice. Some software products marketed by SAP SE and its distributors contain proprietary software components of other software vendors. National product specifications may vary.

These materials are provided by SAP SE or an SAP affiliate company for informational purposes only, without representation or warranty of any kind, and SAP or its affiliated companies shall not be liable for errors or omissions with respect to the materials. The only warranties for SAP or SAP affiliate company products and services are those that are set forth in the express warranty statements accompanying such products and services, if any. Nothing herein should be construed as constituting an additional warranty.

In particular, SAP SE or its affiliated companies have no obligation to pursue any course of business outlined in this document or any related presentation, or to develop or release any functionality mentioned therein. This document, or any related presentation, and SAP SE's or its affiliated companies' strategy and possible future developments, products, and/or platforms, directions, and functionality are all subject to change and may be changed by SAP SE or its affiliated companies at any time for any reason without notice. The information in this document is not a commitment, promise, or legal obligation to deliver any material, code, or functionality. All forward-looking statements are subject to various risks and uncertainties that could cause actual results to differ materially from expectations. Readers are cautioned not to place undue reliance on these forward-looking statements, and they should not be relied upon in making purchasing decisions.

SAP and other SAP products and services mentioned herein as well as their respective logos are trademarks or registered trademarks of SAP SE (or an SAP affiliate company) in Germany and other countries. All other product and service names mentioned are the trademarks of their respective companies.

See www.sap.com/copyright for additional trademark information and notices.