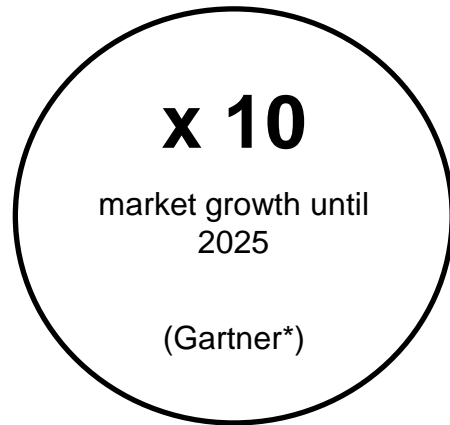


SAP Profitability and Performance Management

Process Mining on S/4 HANA – Warehouse Management

In a nutshell ...

„Process mining is the key to enterprise efficiency.“



The Process Mining on S/4 HANA - Warehouse Management enables you to discover and monitor your business processes, identify inefficiencies and deliver priorities for optimization. It also provides actual drivers based on facts for your profitability and cost management.

Why Process Mining on SAP S/4 HANA - Warehouse Management?



Fast go live thanks to predefined content, SAP S/4 HANA and SAP ERP integration.



In addition to Warehouse Management process, other business processes are available: Purchase to Pay, Order to Cash, Accounts Payable, Accounts Receivable, Claims Management, Credit Application, etc.



Discover and monitor frequency and throughput time.



Determine automation rate, compliance rate and happy path rate.



Leverage built-in simulation capabilities.



Benefit from extreme calculation speed on the huge process event data volume.

What should SAP customers do?

Deploy the Process Mining on S/4 HANA - Warehouse Management

- Cloud or on-premise



Activate the connection to SAP S/4 HANA & SAP ERP

- In case of non-SAP systems connect to the relevant ERP data (Corporate Data)



Maintain mapping rules

- Map your material data to standardized warehouse sector and region codes



Go live!

- Run and simulate using the standard solution



Optional

Add customer journey information

- Extend your model by adding customer interaction and experience data, if available



Add further dimensions

- Improve your model by adding further dimensions for analysis, if available



Add custom activity information

- Improve your model by adding further events and activities information, if available

Inhouse process mining experts or consulting partners can customize the application using state-of-the-art SAP Profitability and Performance Management visual modeling

Model

Uses your most trusted data

- Connects to your transaction data as the primary source.

Uses best practices SAP metrics

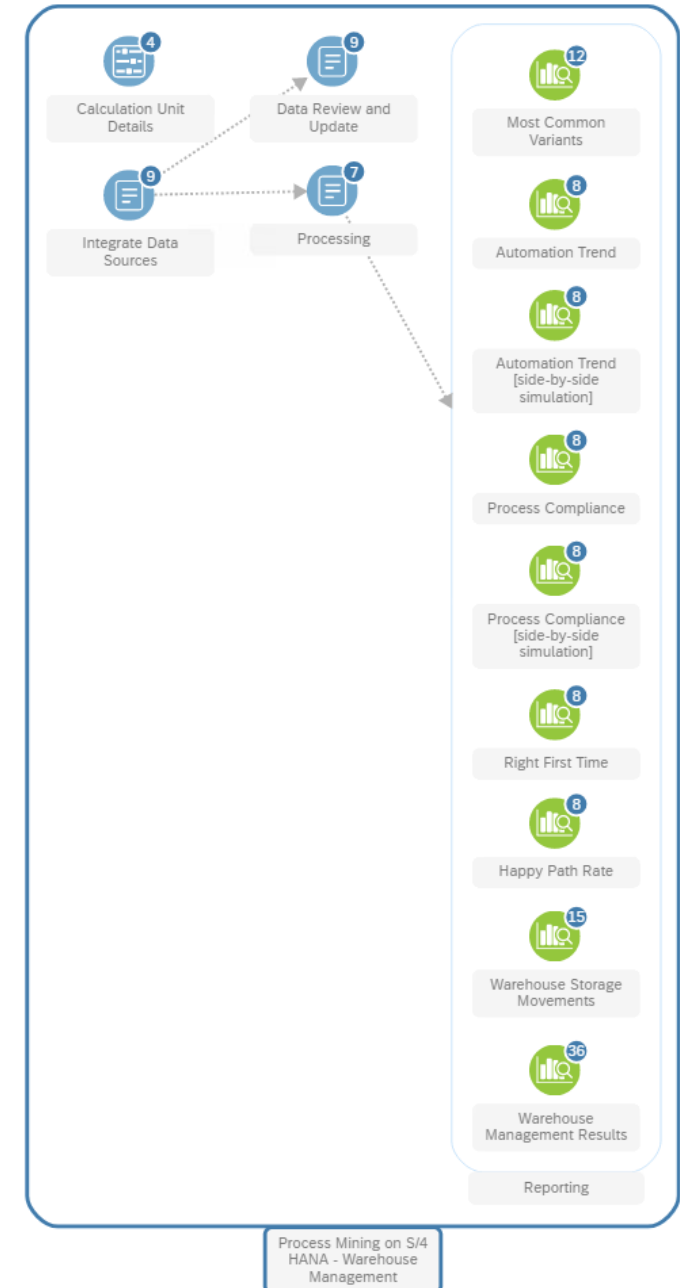
- Uses best practices SAP metrics based on official data to get reliable results.

Built-in traceability

- Calculates on granular level throughout the whole process.

Ready to benchmark

- Allows to compare the KPI's against other companies of your group and regions.



Workflow

Predefined Process Template

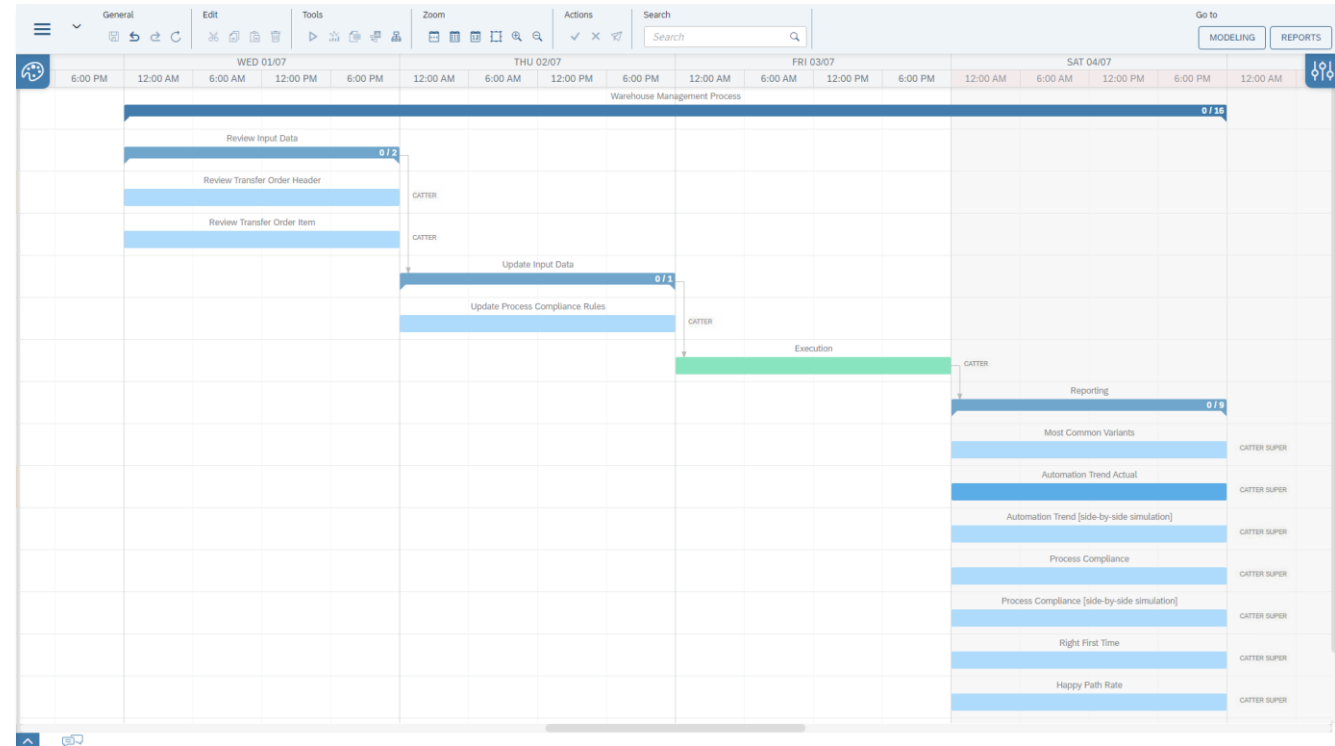
- A predefined process template orchestrates the periodic process mining update in the company and the teams involved. It comprises all activities with their dependencies and can be easily adapted if needed.

Workflow

- A four-eyes principle workflow can be used to further structure the review process with submissions and approvals.

Traceability and Auditability

- The execution of all activities is logged and permanently available for evaluations and audits.



Simulation and Reporting

Predefined Reports

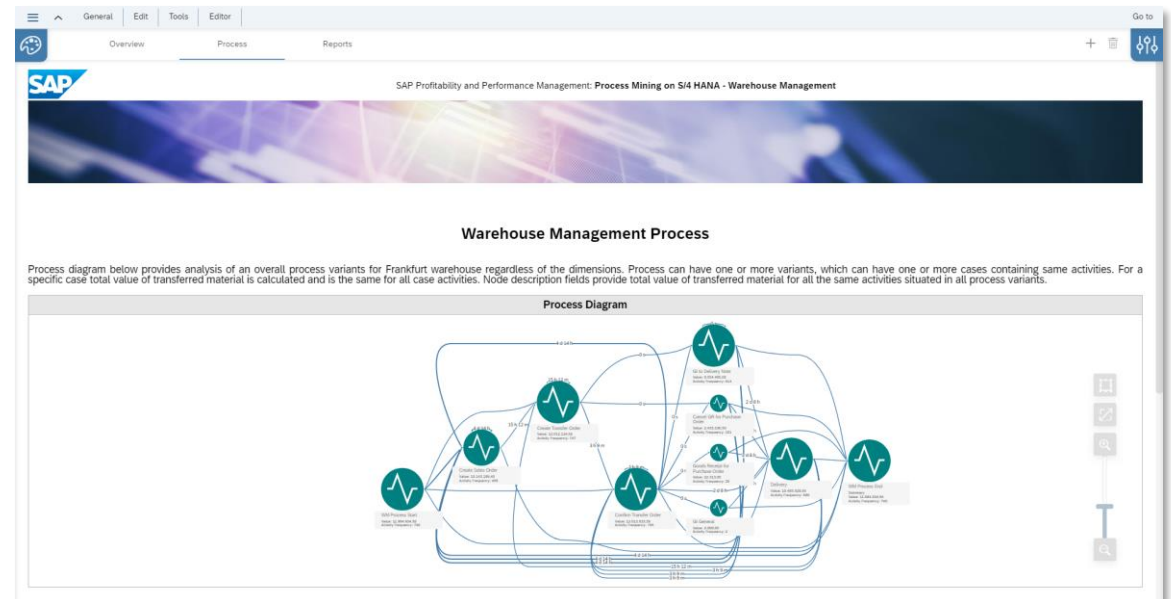
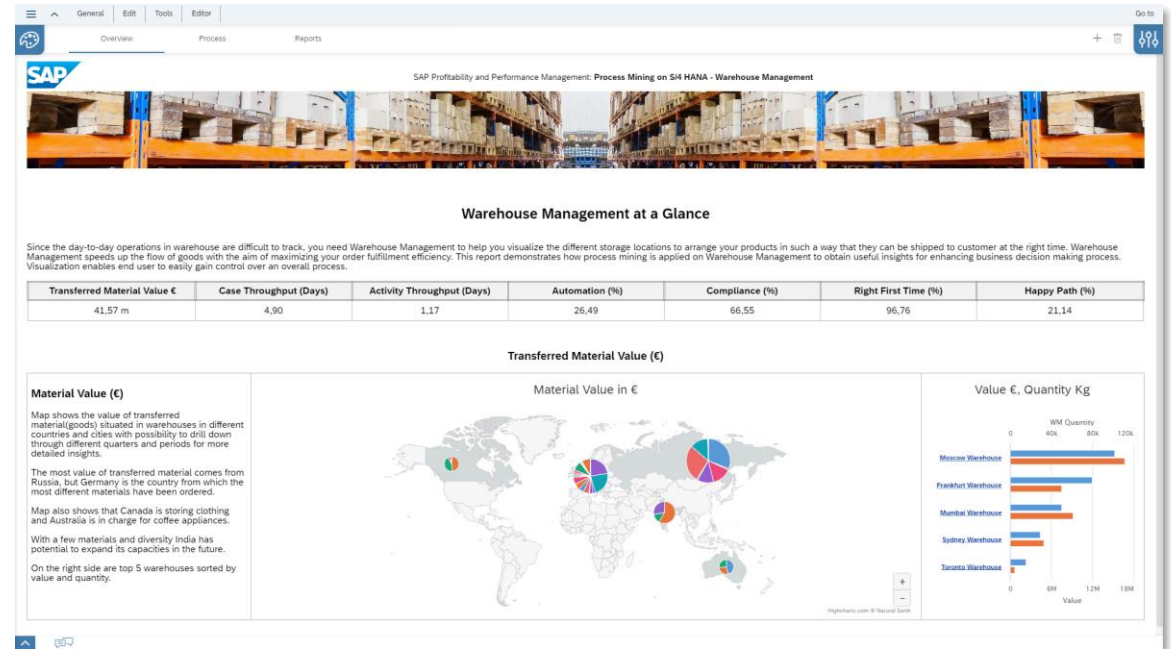
- Predefined results reports include visualizations and KPIs for process and activity frequency, throughput time, happy path, automation rate, compliance rate and thus optimization potential, which are easily adjusted to individual needs.

Interactive What-If Simulation

- Built in simulation capabilities allow to calculate the model with different parameters and assumptions.

Ad-Hoc Analysis

- The ad-hoc analysis provides pivot tables and charts with powerful drill-down, slice and dice capabilities for large-scale data mining.



Summary

- SAP Profitability and Performance Management comes with a predefined content for Process Mining on S/4 HANA – Warehouse Management.
- The predefined content as well as the integration of SAP S/4 HANA and SAP ERP ensure high degree of automation and a short implementation time.
- Works directly on original ERP data, no data redundancy.
- Covers warehouse management process but also other important business processes are covered in another contents such as: purchase-to-pay, order-to-cash, accounts payable, accounts receivable, etc.
- State-of-the-art user interface is attractive for data scientists and process mining experts. Ideal to extend the model without coding.
- Optionally the results can be used as driver-input for the Profitability and Cost Management content, to do allocations based on real measured frequencies and throughput times.