

Sample Content for Process Mining on SAP S/4HANA – Credit
Application
SAP Profitability and Performance Management
Document Version: 3.0 SP15 – 2021-09-21

PUBLIC

Sample Content for Process Mining on SAP S/4HANA – Credit Application

Processes and Functions supporting Sample Business Scenarios



Typographic Conventions

Type Style	Description
<i>Example</i>	Words or characters quoted from the screen. These include field names, screen titles, pushbuttons labels, menu names, menu paths, and menu options. Textual cross-references to other documents.
Example	Emphasized words or expressions.
EXAMPLE	Technical names of system objects. These include report names, program names, transaction codes, table names, and key concepts of a programming language when they are surrounded by body text, for example, SELECT and INCLUDE.
Example	Output on the screen. This includes file and directory names and their paths, messages, names of variables and parameters, source text, and names of installation, upgrade and database tools.
Example	Exact user entry. These are words or characters that you enter in the system exactly as they appear in the documentation.
<Example>	Variable user entry. Angle brackets indicate that you replace these words and characters with appropriate entries to make entries in the system.
EXAMPLE	Keys on the keyboard, for example, F2 or ENTER .

Contents

- 1 Introduction and Basics..... 6**
 - 1.1 About this Guide 6
 - 1.2 Constraints..... 6
 - 1.3 Related Documentation..... 7
 - 1.4 Glossary 7

- 2 Business Example..... 8**
 - 2.1 Scope and Business Definition 9

- 3 Process Mining on SAP S/4HANA – Credit Application in Detail 10**
 - 3.1 Integrate Data Sources 11
 - 3.1.1 BUT000 – BP: General Data I 12
 - 3.1.2 BP1010 – Creditworthiness Data..... 13
 - 3.1.3 VDARL – Loans 13
 - 3.1.4 VZZKOKO – Table Condition Header 14
 - 3.1.5 CDHDR – Change Documents Header 15
 - 3.1.6 CDPOS – Change Documents Items..... 15
 - 3.1.7 USR02 – Logon Data 15
 - 3.1.8 Automatic Transactions..... 16
 - 3.1.9 Process Compliance Rules 16
 - 3.1.10 Process Forecast Data 16
 - 3.2 Data Review and Update 17
 - 3.2.1 Review BP: General data I 17
 - 3.2.2 Review Creditworthiness Data 17
 - 3.2.3 Review Loans..... 17
 - 3.2.4 Review Table Condition Header 17
 - 3.2.5 Review Change Documents Header 18
 - 3.2.6 Review Change Documents Items 18
 - 3.2.7 Review Logon Data 18
 - 3.2.8 Update Automatic Transactions..... 18
 - 3.2.9 Update Process Compliance Rules 18
 - 3.2.10 Review Process Forecast Data 19
 - 3.3 Processing..... 19
 - 3.3.1 Join Loans Data..... 20
 - 3.3.2 Join Change Documents Data..... 20
 - 3.3.3 Derive Loan Activities 20
 - 3.3.4 Derive Activities from Change Documents Data 20
 - 3.3.5 Join Activity Derivation Results 21
 - 3.3.6 Calculate KPIs 21
 - 3.3.7 Determine Automation and Compliance 21

3.3.8	Determine Happy Path	22
3.3.9	Start and End	22
3.4	<i>Reporting</i>	22
3.4.1	Most Common Variants	23
3.4.2	Automation Trend	23
3.4.3	Process Compliance.....	24
3.4.4	Right First Time	25
3.4.5	Happy Path Trend.....	25
3.4.6	Loan Application Time.....	26
3.4.7	Loan Approval Time.....	26
3.4.8	Throughput Days of Case	27
3.4.9	Throughput Days of Case [side-by-side simulation]	28
3.4.10	Credit Application Results	28
3.4.11	Credit Application Results [side-by-side simulation]	29

Table of Figures

Figure 1: Digital Imperative 8
Figure 2: Sample Content Information and Calculation Model 9

1 Introduction and Basics

1.1 About this Guide

This guide provides information about the sample content for Process Mining on SAP S/4HANA – Credit Application, which can be installed on top of SAP Profitability and Performance Management. This sample content describes a project accelerator, ideas, and best practices for modeling an end-to-end profitability and cost calculation model that is feasible for actuals, planning, forecasting and simulations. It covers the full contribution margin scheme at a granular product level. It also contains references to further documentation that you should read before performing these tasks.

The structure of this document is organized around the following topic:

Business Example

This part of the guide covers the main features of the sample content. It describes the information model and calculation model.

Target Audience:

- Business experts
- Solution consultants
- Presales teams

Considerations

It is essential that you are familiar with the content of the corresponding guides and documents related to this topic before beginning with this example. For more information about the available guides and documents, as well as integration with other systems, roles, configuration information, users and authorization concept, see [Related Documentation](#).

1.2 Constraints

This guide does not provide information about the installation of the sample content. For more information about this, see [Related Documentation](#).

1.3 Related Documentation

The following table lists related documents.

Topic	Guide/Tool/Title	Links
<ul style="list-style-type: none"> • Installation and planning of your system landscape • Activities to keep the system running • Information about how to ensure the required security for your SAP landscape 	Administration Guide	Administration Guide
<ul style="list-style-type: none"> • SAP Note for Sample content for Process Mining on SAP S/4HANA – Credit Application 	Sample content for Process Mining on SAP S/4HANA – Credit Application	https://launchpad.support.sap.com/#/notes/2968377 SAP Note 2968377
<ul style="list-style-type: none"> • Operation of SAP NetWeaver 	Technical Operations Manual	https://help.sap.com/viewer/p/SAP_NETWEAVER_750
<ul style="list-style-type: none"> • Application Help 	Detailed Application help for SAP Profitability and Performance Management	SAP Profitability and Performance Management
<ul style="list-style-type: none"> • SAP HANA Administration Guide 	Administration guide for SAP HANA; supported SDA databases	https://help.sap.com/viewer/product/SAP_HANA_PLATFORM/
<ul style="list-style-type: none"> • SAP Notes 		https://launchpad.support.sap.com/

1.4 Glossary

ERP	Enterprise Resource Planning System
KPI	Key Performance Indicator
CA	Credit Application

2 Business Example

The market is at the dawn of the next big technology change where everything is connected, and software is imbedded in people's lives. This technology change is bringing new opportunities and new threats. Cycle time for innovation is 5–10 times faster, and enterprises can reduce complexity to be more competitive. Business efficiency is ahead of the market and product and service profitability are constantly tracked and optimized.

That is why digital performance management will be the game-changer for companies who want to be successful in the digital economy. A digital performance management solution for 21st century business needs to measure and manage enterprise efficiency and drive product and service profitability in real time.

Built on SAP HANA, SAP Profitability and Performance Management is a next generation digital performance management solution that provides breakthrough real-time business data aggregation capabilities for SAP and non-SAP systems, a high-speed finance and risk calculation engine and comprehensive simulation and scenario management.

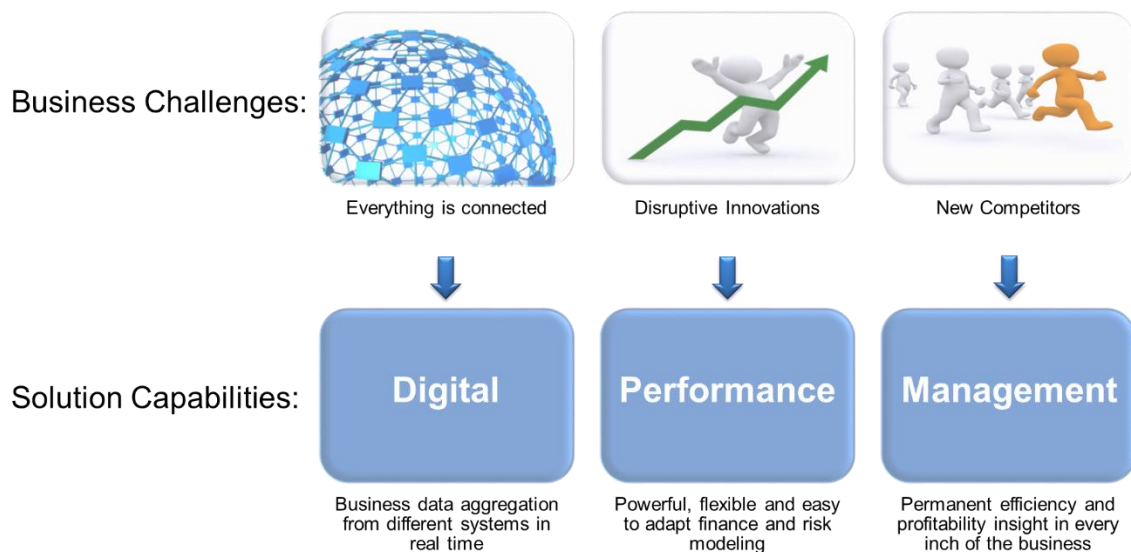


Figure 1: Digital Imperative

2.1 Scope and Business Definition

This sample content covers the analysis of sample process data coming from standard SAP tables in the area of Credit Application, comprising certain aspects of data integration, data input, processing (including derivations and calculations), as well as reporting.

The end-result of this, hopefully, will allow business users to gain useful insights into their organization's processes and equip them with information that they can use as basis for managing these processes.

The following screenshot shows the function hierarchy of the sample content and the process template.

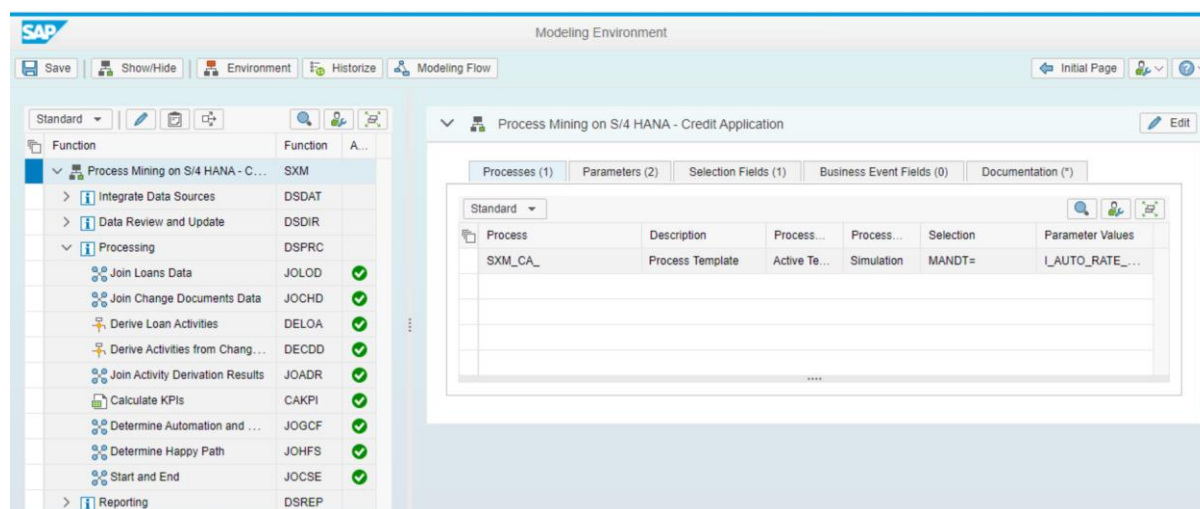


Figure 2: Sample Content Information and Calculation Model

You can also find the information contained in the following chapters on the respective [Documentation](#) tabs for the model.

3 Process Mining on SAP S/4HANA – Credit Application in Detail

Process Mining on S/4 HANA – Credit Application aims to extract event information from standard ERP tables and use this information to understand how processes flow within an organization and gain insights on where improvements can be made in the process chain.

This sample content covers many end-to-end examples of processes common to different industries with focus on some important Key Performance Indicators (KPIs) like Throughput Time, Happy Path rate, Level of Automation and Compliance to standard processes.

This sample content comes with the SAP Profitability and Performance Management Software Installation.

It consists of one Calculation Unit function and is structured underneath by description functions in the following sections:

Integrate Data Sources

Defines manually loaded data, as well as an option to fetch data from a remote SAP system, as input for the subsequent functions.

Data Review and Update

Provides specific review options for all the tables.

Processing

All the processing functions such as data enrichment, derivation of activities and calculation of KPIs are defined in this section.

Basic processes:

- Collection of main data from header and item tables, as well as data from change tables
- Data enrichment where some characteristics are fetched from other tables such as product type, purpose of loan, country, etc.
- Derivation of activities
- Calculation of KPIs
- Determination of Automation and Compliance
- Determination of Happy Path
- Finalization of data for use in reporting, such as generation of a START and END activity ID for all cases and ranking of variants according to their frequency of occurrence

Reporting

This section provides reports specific to Credit Application module. A self-service report where all the relevant key figures and characteristics are included, which, through selections and filters can produce reports tailor-made for the user's requirements.

Please note, that for execution activities no performer and reviewer teams are assigned, that means every execution user can run the activities. In implementation projects teams need to be assigned to restrict the authorizations to relevant users.

The *Process Mining on SAP S/4HANA – Credit Application* calculation unit defines the process template **SXM_CA_ - Process Template** with the following activities:

- **Review Input Data:**
 - *Review BP: General data I*
 - *Review Loans*
- **Update Input Data:**
 - *Update Automatic Transactions*
 - *Update Process Compliance Rules*
- **Execution**
- **Reporting:**
 - *Most Common Variants*
 - *Automation Trend*
 - *Process Compliance*
 - *Right First Time*
 - *Happy Path Trend*
 - *Loan Application Time*
 - *Loan Approval Time*
 - *Throughput Days of Case*
 - *Throughput Days of Case [side-by-side simulation]*
 - *Credit Application Results*
 - *Credit Application Results [side-by-side simulation]*

3.1 Integrate Data Sources

In this section the necessary data sources are defined. This sample content works with own data and cannot presume any custom specific system landscape, application or interface.

The integration of data sources uses therefore functions of type Model Table to make test data available and these Model Tables need to be exchanged with other model functions in an implementation project to connect to the real and concrete customer data sources and targets.

A selection is done on the *Client (MANDT)* in the top views as it is what is expected in the implementation project. These views can also be redirected to own data for testing purposes.

Standard SAP ERP tables and fields are being used but the information model is kept lean to ease the adaption in an implementation project. For example, it assumes just some fields from each table are used, which is enough in most cases and obviously much easier to provide.

This section defines manually loaded data used in the subsequent functions:

- *BUT000 – BP: General data I*
- *BP1010 – Creditworthiness Data*
- *VDARL - Loans*
- *VZZKOKO – Table Condition Header*
- *CDHDR – Change Documents Header*
- *CDPOS – Change Documents Items*
- *USR02 – Logon Data*
- *Automatic Transactions*
- *Process Compliance Rules*
- *Process Forecast Data*

3.1.1 BUT000 – BP: General Data I

This function replicates the data from the ERP system and allows for it to be utilized as a data source for downstream functions.

It contains the following fields:

- *CLIENT*: Client
- *PARTNER*: Business Partner Number
- *TYPE*: Business Partner Category
- *CONTACT*: Business Partner: Contact Permission
- *NOT_RELEASED*: Indicator: Not Released
- *CRUSR*: User who created the object
- *CRDAT*: Date on which the object was created
- *CRTIM*: Time at which the object was created
- *CHUSR*: Last user to change object
- *CHDAT*: Date when object was last changed
- *CHTIM*: Time at which the object was last changed

3.1.2 BP1010 – Creditworthiness Data

This function replicates the data from the ERP system and allows for it to be utilized as a data source for downstream functions.

It contains the following fields:

- *MANDT*: Client
- *PARTNR*: Business Partner Number
- *SOLVNCY*: Solvency
- *SOL_INS*: Institute Providing Credit Standing Information
- *SOL_INF*: Status of Credit Standing Information
- *SOL_I_D*: Date of Credit Standing Information
- *RATING*: Rating

3.1.3 VDARL – Loans

This function replicates the data from the ERP system and allows for it to be utilized as a data source for downstream functions.

It contains the following fields:

- *MANDT*: Client
- *BUKRS*: Company Code
- *SARCHIV*: Archiving Category Indicator
- *RANL*: Contract Number
- *RERF*: Entered By
- *DERF*: First Entered on
- *TERF*: Time of Initial Entry
- *DBEAR*: Last Edited on
- *TBEAR*: Last Edited at
- *SSTATI*: Status of data record
- *SANLF*: Product Category
- *GSART*: Product Type
- *STITEL*: Loan Type Indicator
- *RANTRAG*: Application number
- *SFRIST*: Loan Term
- *BANTRAG*: Capital applied for
- *SANTWHR*: Currency
- *DANTRAG*: Entry Date of Loan Application

- *SVZWECK*: Purpose of Loan
- *SLAENDER*: Country ID
- *SNICHTAB*: Reason for Non-Acceptance
- *DARCHIV*: Date of Rejection/Withdrawal
- *DBEWI*: Approval date
- *SGESST*: Branch Office
- *SBEA*: Loan Processing Indicator
- *RDARNEHM*: Business Partner Number
- *NO_PLAN_DONE*: Do Not Transfer Loan to Status "Completed"

3.1.4 VZZKOKO – Table Condition Header

This function replicates the data from the ERP system and allows for it to be utilized as a data source for downstream functions.

It contains the following fields:

- *MANDT*: Client
- *BUKRS*: Company Code
- *SANLF*: Product Category
- *RKEY1*: Key Part 1
- *DGUEL_KK*: Date Condition Effective from
- *NLFD_ANG*: Offer consecutive number
- *SSTATI*: Status of data record
- *SKOKOART*: Type of Condition Header
- *BZUSADE*: Commitment Capital
- *SWHRZUSA*: Currency of commitment amount
- *DANGAM*: Offer creation date
- *DANGBIS*: Offer Effective to
- *JANNAHME*: Offer Acceptance Indicator
- *DANNAHME*: Date of acceptance of offer
- *JVERTRAG*: *Indicator*: Contract Created?
- *DVERTRAM*: Contract creation date

3.1.5 CDHDR – Change Documents Header

This function replicates the data from the ERP system and allows for it to be utilized as a data source for downstream functions.

Fields:

- *MANDANT*: Client
- *OBJECTCLAS*: Object class
- *OBJECTID*: Object Value
- *CHANGENR*: Change Number of Document
- *USERNAME*: User name of the person responsible in change document
- *UDATE*: Creation date of the change document
- *UTIME*: Time changed
- *TCODE*: Transaction in which a change was made
- *CHANGE_IND*: Application object change type (U, I, E, D)

3.1.6 CDPOS – Change Documents Items

This function replicates the data from the ERP system and allows for it to be utilized as a data source for downstream functions.

It contains the following fields:

- *MANDANT*: Client
- *OBJECTCLAS*: Object class
- *OBJECTID*: Object Value
- *CHANGENR*: Change Number of Document
- *TABNAME*: Table Name
- *TABKEY*: Changed table record key
- *FNAME*: Field Name
- *CHNGIND*: Change Type (U, I, E, D)
- *VALUE_NEW*: New contents of changed field
- *VALUE_OLD*: Old contents of changed field

3.1.7 USR02 – Logon Data

This function lists different types of user in CA Process and allows for it to be utilized to determine user types.

It contains the following fields:

- *MANDT*: Client
- *BNAME*: User Name
- *USTYP*: User Type

3.1.8 Automatic Transactions

This function lists all combinations of automatic transaction in Credit Application process and allows for it to be utilized to determine automation rate.

It contains the following fields:

- *USTYP*: User Type
- *TCODE*: Transaction in which a change was made
- *AUT_FLAG*: Automation Flag
- *AUTID*: Automation ID

3.1.9 Process Compliance Rules

This function describes undesired violations for process compliance and desired activity sequence for desired process path - Happy path. Compliance violations are sequence and outright. Sequence violation means that the order of activities is not preferable. Outright violation exists for undesired activities. Happy path indicates desirable activity sequence, while white list indicates undesirable process path.

It contains the following fields:

- *ACT_PREC*: Preceding Activity ID
- *ACT_ID*: Activity ID
- *ACT_FOLL*: Following Activity ID
- *COMCSS*: Compliance Class
- *COMID*: Compliance ID

3.1.10 Process Forecast Data

This model table consists of all available in the last Start and End JOCSE function 99 fields and it is used for simulation purposes.

3.2 Data Review and Update

These Query functions are used to provide read data access to all input data for the Process Mining calculation.

See the corresponding Model Tables in Integrate Data Sources for details about the fields.

3.2.1 Review BP: General data I

This Query function is used to provide read data access to *Business Partner General* data, which serves as an input for the Process Mining calculation.

See [BUT000 - BP: General data I](#) Model Table in Integrate Data Sources for details about the fields.

3.2.2 Review Creditworthiness Data

This Query function provides read data access to *Creditworthiness Data*, which serves as an input for the Process Mining calculation.

See [BP1010 - Creditworthiness Data](#) Model Table in Integrate Data Sources for details about the fields.

3.2.3 Review Loans

This Query function provides read data access to *Loans* data, which serves as an input for the Process Mining calculation.

See [VDARL - Loans](#) Model Table in Integrate Data Sources for details about the fields.

3.2.4 Review Table Condition Header

This Query function provides read data access to *Table Condition Header* data, which serves as an input for the Process Mining calculation.

See [VZZKOKO - Table Condition Header](#) Model Table in Integrate Data Sources for details about the fields.

3.2.5 Review Change Documents Header

This Query function provides read data access to *Change Documents Header* data, which serves as an input for the Process Mining calculation.

See [CDHDR - Change Documents Header](#) Model Table in Integrate Data Sources for details about the fields.

3.2.6 Review Change Documents Items

This Query function provides read data access to *Change Documents Items* data, which serves as an input for the Process Mining calculation.

See [CDPOS - Change Documents Items](#) Model Table in Integrate Data Sources for details about the fields.

3.2.7 Review Logon Data

This Query function provides read data access to user *Logon Data*, which serves as an input for the Process Mining calculation.

See [USR02 - Logon Data](#) Model Table in Integrate Data Sources for details about the fields.

3.2.8 Update Automatic Transactions

This Query function provides read and update data access to *Automatic Transactions* data, which serves as an input for the Process Mining calculation.

See [Automatic Transactions](#) Model Table in Integrate Data Sources for details about the fields.

3.2.9 Update Process Compliance Rules

This Query function provides read and update data access to *Process Compliance Rules* data, which serves as an input for the Process Mining calculation.

See [Process Compliance Rules](#) Model Table in Integrate Data Sources for details about the fields.

3.2.10 Review Process Forecast Data

This Query function provides read data access to *Process Forecast* data, which serves as an input for the Process Mining calculation.

See [Process Forecast Data](#) Model Table in Integrate Data Sources for details about the fields.

3.3 Processing

In this section, the core function of the model is executed.

This stream takes the data from Loans Management and analyses the Credit Application process.

The starting points are the Business partner data, loans and conditions data and the document changes in *CDHDR/CDPOS*. This data is selected and matched in order to have completed start-to-end Credit Application process.

Key activities are then derived both from the documents and their changes and each document is assigned a unique Case ID. Lines in the final document will represent activities and will be marked by a timestamp and some additional fields like an automation and compliance flag. The cases are then grouped based on the concatenation of their ordered Activities ID into different variants which are ranked by frequency. KPIs are then computed to provide some useful information to understand the process and where, when and how it deviates from the standard variant.

Input:

- *BUT000 - BP: General data I*
- *BP1010 - Creditworthiness Data*
- *VDARL - Loans*
- *VZZKOKO - Table Condition Header*
- *CDHDR - Change Documents Header*
- *CDPOS - Change Documents Items*
- *USR02 - Logon Data*
- *Automatic Transactions*
- *Process Compliance Rules*
- *Process Forecast Data*

Functions:

- *Join Loans Data*
- *Join Change Document Data*
- *Derive Loan Activities*
- *Derive Activities from Change Documents Data*

- *Join Activity Derivation Results*
- *Calculate KPIs*
- *Determine Automation and Compliance*
- *Determine Happy Path*
- *Start and End*

3.3.1 Join Loans Data

In this function *Business Partner data* is joined, then *Loans* and *Table Condition Header* are added.

The join method is “Left Outer Join” in order to select all data from *BUT000 - BP: General data I*. The data is also enriched with derivation of field *CASE_ID*.

3.3.2 Join Change Documents Data

In this function the *Change Documents Header* and the *Change Documents Items* are joined.

The *Event Timestamp* and *Case ID* are also computed in this function, thereby the changes can be matched to their credit applications in *Join Activity Derivation Results*.

3.3.3 Derive Loan Activities

This Derivation function is used to derive basic activities for each credit application. *Event Timestamp* is also derived.

The *Case ID* to each has already been assigned. Each rule has a corresponding activity.

3.3.4 Derive Activities from Change Documents Data

This Derivation function is used to derive an *Activity ID* for some key change activities coming from *Join Change Documents Data*. Also, transaction codes for the input activities can be find here.

The *Case ID* to each has already been assigned. Each rule has a corresponding activity.

3.3.5 Join Activity Derivation Results

This Join function is used to join the two activities streams (*Derive Loan Activities* and *Derive Activities from Change Document Data*) and to compute the *Variant ID*.

The Variant ID field is created using string aggregation of activity IDs, ordered by Timestamp and Activity ID and grouped on Case ID level. A hash value is then produced for each unique value. Then the Variant ID is joined back (via Left Outer Join) to the original input table. The join predicate is the Case ID for both joins.

3.3.6 Calculate KPIs

This Calculation function takes the results of Join Activity Derivation Results join and calculates several Key Performance Indicators (KPIs):

- *Preceding Activity ID*
- *Following Activity ID*
- *Activity Frequency*
- *Activity Sequence*
- *Right First Time Flag*
- *Duration (Seconds)*
- *Counter*
- *Application Counter*
- *Variant Frequency*
- *Right First Time Rate*
- *Duration (Days)*
- *Variant Rank by Frequency*

3.3.7 Determine Automation and Compliance

This function generates automation / compliance flag in every record and user type / violation type for automation / non-compliance in each record.

There are two types of violation, sequence and outright. Sequence violation means that particular activity sequence represents violation and outright violation that existence of activity by itself represents violation. Non-compliant records have *Compliance flag* set to '0', rest are set to '1'.

There are also two types of user, dialog (type A and S) and batch (type B, C and L). Dialog user means that the tagged activity has been processed manually and batch user that the tagged activity has been processed automatically. Automation records have *Automation flag* set to '1', else are set to '0'.

3.3.8 Determine Happy Path

This function generates happy path flag and calculates the *Happy Path Rate* for every record. Records satisfying happy path sequence have flag value '1', else have '0'.

3.3.9 Start and End

This Join function takes as input *Determine Happy Path* and creates two new lines for each *CASE_ID*. Variable *VAR_FREQ* is assigned only to the first line providing a quick way to sum over *CASE_IDS* without multiplying by the number of activities. *QCOUNTER* is assigned to all available activities with exception of starting and ending activities. The function also calculates Key Performance Indicators (KPIs):

- *Manual Rate*
- *Non-Compliance Rate*
- *With Subsequent Changes Rate*
- *Without Happy Path Rate*

3.4 Reporting

In this section additional Query functions for comfortable review of results by execution users are defined.

In the process these review and reporting activities happen, after the Process Mining is executed.

- *Most Common Variants*
- *Automation Trend*
- *Process Compliance*
- *Right First Time*
- *Happy Path Trend*
- *Loan Application Time*
- *Loan Approval Time*
- *Throughput Days of Case*
- *Throughput Days of Case [side-by-side simulation]*
- *Credit Application Results*
- *Credit Application Results [side-by-side simulation]*

Please note, that no specific chart types are maintained, so they use the default “Column” chart type, but this type can be changed by end users on-the-fly and also saved as default layout.

3.4.1 Most Common Variants

This report ranks the variants (specific sequence of activities) according to their frequency of occurrence. It shows for each variant the number of cases, total value, average activity duration (days) and average variant duration (days). Module ID is configured as a selection option, and user will be prompted initially to select the module ID to be displayed. If '*' is entered, all modules will be displayed.

The following fields are preconfigured in this report:

- *Number of Cases*
- *Commitment Capital*
- *Duration (Days)*
- *Duration (Days) of Case*
- *Variant Average Duration (Days)*
- *Activity Average Duration (Days)*
- *Variant Rank by Frequency*

Some dimensions are available as free characteristics which can be added anytime to help with analysis, such as:

- *Scenario*
- *Activity Sequence*
- *Activity ID*
- *Case ID*
- *Variant ID*
- *Quarter*
- *Period*
- *Product Type*
- *Loan Type Indicator*
- *Purpose of Loan*
- *Country ID*
- *Reason for Non-Acceptance*
- *Branch Office*

3.4.2 Automation Trend

This report shows the percentage of activities that are automated. This is best presented as a 100% column or bar chart.

The following fields are preconfigured in this report:

- *Automation Rate*
- *Manual Rate*
- *Period*

Some dimensions are available as free characteristics which can be added anytime to help with analysis, such as:

- *Scenario*
- *Activity ID*
- *Case ID*
- *Quarter*
- *Product Type*
- *Loan Type Indicator*
- *Purpose of Loan*
- *Country ID*
- *Reason for Non-Acceptance*
- *Branch Office*

3.4.3 Process Compliance

This report shows the percentage of activities that are compliant. This is best presented as a 100% column or bar chart.

The following fields are preconfigured in this report:

- *Compliance Rate*
- *Non-Compliance*
- *Period*

Some dimensions are available as free characteristics which can be added anytime to help with analysis, such as:

- *Scenario*
- *Activity ID*
- *Case ID*
- *Quarter*
- *Product Type*
- *Loan Type Indicator*
- *Purpose of Loan*
- *Country ID*
- *Reason for Non-Acceptance*

- *Branch Office*

3.4.4 Right First Time

This report shows the percentage of activities that are done right the first time (i.e. no subsequent changes made). This is best presented as a 100% column or bar chart.

The following fields are preconfigured in this report:

- *Right First Time Rate*
- *With Subsequent Changes*
- *Period*

Some dimensions are available as free characteristics which can be added anytime to help with analysis, such as:

- *Scenario*
- *Activity ID*
- *Case ID*
- *Quarter*
- *Product Type*
- *Loan Type Indicator*
- *Purpose of Loan*
- *Country ID*
- *Reason for Non-Acceptance*
- *Branch Office*

3.4.5 Happy Path Trend

This report shows the Happy Path behavior. This is best presented as a 100% column or bar chart.

The following fields are preconfigured in this report:

- *Happy Path Rate*
- *Without Happy Path*
- *Period*

Some dimensions are available as free characteristics which can be added anytime to help with analysis, such as:

- *Scenario*
- *Activity ID*
- *Case ID*

- *Quarter*
- *Product Type*
- *Loan Type Indicator*
- *Purpose of Loan*
- *Country ID*
- *Reason for Non-Acceptance*
- *Branch Office*

3.4.6 Loan Application Time

This report shows the percentage of activities that are compliant. This is best presented as a 100% column or bar chart.

The following fields are preconfigured in this report:

- *Number of Applications*
- *Commitment Capital Value*
- *Application Submission Period (in days)*
- *Unique Count of Applications within a given period*
- *Application Frequency*
- *Average Days*
- *Loan Application Range*

Some dimensions are available as free characteristics which can be added anytime to help with analysis, such as:

- *Scenario*
- *Activity ID*
- *Case ID*
- *Product Type*
- *Purpose of Loan*
- *Country ID*
- *Company Code*
- *Branch Office*

3.4.7 Loan Approval Time

This report shows the percentage of activities that are compliant. This is best presented as a 100% column or bar chart.

The following fields are preconfigured in this report:

- *Number of Applications*
- *Commitment Capital Value*
- *Application Approval Period (in days)*
- *Unique Count of Applications within a given period*
- *Application Frequency*
- *Average Days*
- *Loan Application Range*

Some dimensions are available as free characteristics which can be added anytime to help with analysis, such as:

- *Activity ID*
- *Scenario*
- *Case ID*
- *Product Type*
- *Purpose of Loan*
- *Country ID*
- *Company Code*
- *Branch Office*

3.4.8 Throughput Days of Case

This report shows the total Throughput Days of Case during each period. This is best presented as a bar chart.

The following fields are preconfigured in this report:

- *Throughput (Days) of Case*
- *Throughput (Days)*
- *Period*

Some dimensions are available as free characteristics which can be added anytime to help with analysis, such as:

- *Activity ID*
- *Scenario*
- *Case ID*
- *Product Type*

3.4.9 Throughput Days of Case [side-by-side simulation]

This report shows the total Throughput Days of Case during each period. This is best presented as a bar chart.

The following fields are preconfigured in this report:

- *Throughput (Days) of Case*
- *Throughput (Days)*
- *Period*

Some dimensions are available as free characteristics which can be added anytime to help with analysis, such as:

- *Activity ID*
- *Scenario*
- *Case ID*
- *Product Type*

3.4.10 Credit Application Results

This report shows the results of process mining for Credit Application module. This is best presented as a data grid.

The following fields are preconfigured in this report:

- *Throughput Time*
- *Number of Applications*
- *Rework Activities*
- *Commitment Capital Value*
- *Happy Path Rate*
- *Without Happy Path*
- *Throughput Time of Case*
- *Activity Frequency*
- *Variant Frequency*
- *Automation Rate*
- *Manual Rate*
- *Compliance Rate*
- *Non-Compliance*
- *Right First Time Rate*
- *With Subsequent Changes*

- *Period*

Some dimensions are available as free characteristics which can be added anytime to help with analysis, such as:

- *Scenario*
- *Company Code*
- *Activity ID*
- *Case ID*
- *Quarter*
- *Product Type*
- *Loan Type Indicator*
- *Purpose of Loan*
- *Country ID*
- *Reason for Non-Acceptance*
- *Branch Office*
- *Activity Sequence*
- *Variant Rank by Frequency*
- *Automation Flag*
- *Compliance Flag*

3.4.11 Credit Application Results [side-by-side simulation]

This report shows the results of process mining for Credit Application module. This is best presented as a data grid.

The following fields are preconfigured in this report:

- *Throughput Time*
- *Number of Applications*
- *Rework Activities*
- *Commitment Capital Value*
- *Happy Path Rate*
- *Without Happy Path*
- *Throughput Time of Case*
- *Activity Frequency*
- *Variant Frequency*
- *Automation Rate*
- *Manual Rate*
- *Compliance Rate*

- *Non-Compliance*
- *Right First Time Rate*
- *With Subsequent Changes*
- *Period*

Some dimensions are available as free characteristics which can be added anytime to help with analysis, such as:



- *Scenario*
- *Company Code*
- *Activity ID*
- *Case ID*
- *Quarter*
- *Product Type*
- *Loan Type Indicator*
- *Purpose of Loan*
- *Country ID*
- *Reason for Non-Acceptance*
- *Branch Office*
- *Activity Sequence*
- *Variant Rank by Frequency*
- *Automation Flag*
- *Compliance Flag*

Important Disclaimers and Legal Information

Hyperlinks

Some links are classified by an icon and/or a mouse over text. These links provide additional information.

About the icons:

- Links with the icon  : You are entering a Web site that is not hosted by SAP. By using such links, you agree (unless expressly stated otherwise in your agreements with SAP) to this:
 - The content of the linked-to-site is not SAP documentation. You may not infer any product claims against SAP based on this information.
 - SAP does not agree or disagree with the content on the linked-to-site, nor does SAP warrant the availability and correctness. SAP shall not be liable for any damages caused by the use of such content unless damages have been caused by SAP's gross negligence or willful misconduct.
- Links with the icon  : You are leaving the documentation for that particular SAP product or service and are entering a SAP-hosted Web site. By using such links, you agree that (unless expressly stated otherwise in your agreements with SAP) you may not infer any product claims against SAP based on this information.

Beta and Other Experimental Features

Experimental features are not part of the officially delivered scope that SAP guarantees for future releases. This means that experimental features may be changed by SAP at any time for any reason without notice. Experimental features are not for productive use. You may not demonstrate, test, examine, evaluate or otherwise use the experimental features in a live operating environment or with data that has not been sufficiently backed up.

The purpose of experimental features is to get feedback early on, allowing customers and partners to influence the future product accordingly. By providing your feedback (e.g. in the SAP Community), you accept that intellectual property rights of the contributions or derivative works shall remain the exclusive property of SAP.

Example Code

Any software coding and/or code snippets are examples. They are not for productive use. The example code is only intended to better explain and visualize the syntax and phrasing rules. SAP does not warrant the correctness and completeness of the example code. SAP shall not be liable for errors or damages caused by the use of example code unless damages have been caused by SAP's gross negligence or willful misconduct.

Gender-Related Language

We try not to use gender-specific word forms and formulations. As appropriate for context and readability, SAP may use masculine word forms to refer to all genders.



www.sap.com

© 2021 SAP SE or an SAP affiliate company. All rights reserved.

No part of this publication may be reproduced or transmitted in any form or for any purpose without the express permission of SAP SE or an SAP affiliate company. The information contained herein may be changed without prior notice.

Some software products marketed by SAP SE and its distributors contain proprietary software components of other software vendors. National product specifications may vary.

These materials are provided by SAP SE or an SAP affiliate company for informational purposes only, without representation or warranty of any kind, and SAP or its affiliated companies shall not be liable for errors or omissions with respect to the materials. The only warranties for SAP or SAP affiliate company products and services are those that are set forth in the express warranty statements accompanying such products and services, if any. Nothing herein should be construed as constituting an additional warranty.

SAP and other SAP products and services mentioned herein as well as their respective logos are trademarks or registered trademarks of SAP SE (or an SAP affiliate company) in Germany and other countries. All other product and service names mentioned are the trademarks of their respective companies.

Please see <https://www.sap.com/corporate/en/legal/copyright.html> for additional trademark information and notices.