



CUSTOMER

Security Guide

SAP Engineering Control Center 5.2

DOCUMENT HISTORY

 **Note**

Before you start the implementation, make sure you have the latest version of this document.

This guide is valid as of SAP Engineering Control Center 5.2.8.0

The latest version is available on SAP Service Marketplace at

https://help.sap.com/viewer/p/SAP_ENGINEERING_CONTROL_CENTER

Version	Date	Change
1.0	2025-02-27	Initial creation

TABLE OF CONTENTS

1	INTRODUCTION	4
1.1	TARGET GROUP	4
1.2	WHY IS SECURITY NECESSARY?	4
2	BEFORE YOU START	5
3	TECHNICAL SYSTEM LANDSCAPE	7
3.1	USAGE	7
4	SECURITY ASPECTS FOR DATA, IN THE FLOW OF DATA AND IN PROCESSES	8
5	JAVA IMPLEMENTATIONS IN SAP ECTR	12
6	DATA PROTECTION	13
6.1	HANDLING OF PERSONAL DATA	13
6.2	BLOCKING OF PERSONAL DATA	13
6.3	DELETING OF PERSONAL DATA	13

1 INTRODUCTION

This guide does not replace the Administrator's or Operations Guides that are available for production operation.

1.1 Target Group

- Technology consultants
- Security consultants
- System administrators

This document is not part of installation guides, configuration guides, technical manuals or upgrade guides. These guides are only relevant for a certain phase of the software life cycle. The security guide provides information for all phases of the life cycle.

1.2 Why is Security Necessary?

Security requirements increase with the increasing use of distributed systems and the internet for managing business data. In a distributed system, you have to be sure that your data and processes meet the requirements of your company. Furthermore, unauthorized persons must not be able to access to critical information. User errors, carelessness or attempts to manipulate the system must not result in a loss of data or processing time. These security requirements also apply to the SAP ECTR.

About this Document

The Security Guide provides an overview of security-relevant information for SAP ECTR.

Overview of the Main Sections

The Security Guide consists of the following main sections:

- Before you Start
This section contains information about the reasons why security is necessary and how the document is used as well as references to other security guides that form the basis for this Security Guide. Relevant SAP Notes are also listed.
- Technical System Landscape
This section provides an overview of the technical components and communication paths that SAP ECTR uses.
- Security Aspects for Data, in the Flow of Data and in Processes
This section provides an overview of the security aspects of the most frequently used processes within SAP ECTR.

2 BEFORE YOU START

SAP ECTR is based on SAP ERP 6.0 EHP5. Hence the corresponding security guides also apply to SAP ECTR.

Underlying Security Guides

Security guide of the scenario, application or component	Most important sections or specific restrictions
SAP ERP 6.0 EHP5	https://help.sap.com/viewer/product/SAP_ERP/6.05.17/en-US
SAP NetWeaver	https://help.sap.com/viewer/p/SAP_NETWEAVER_740

A complete list of available SAP Security Guides is available on SAP Service Marketplace at <http://service.sap.com/securityguide>.

Important SAP Notes

The following table shows the most important SAP notes regarding the security of SAP ECTR.

Title	SAP Note
SAPHTTP and SSL	506314
Access to Content Server via HTTPS	712330
Subsequent Introduction of the Security Level for Documents (URL Signature)	792366
CAD Services: DUPEC Problem and Additional Message	1904365
ACC Integration in CAD Desktop: Enhancement for new RFCs (EA-APPL)	1895895
ACC Integration in CAD Desktop: Enhancement for new RFCs (PLMWUI)	1893807
CDESK_SRV_GET_FILE_UPLOAD_URL: Check can be Deactivated	1957344
CAD Services: Hierarchy Explosion	1926438
Workflow: Unify Access to Configuration	1830685
WF Notify: User Decision with Automatic Notification Not Supported	1964571
CAD Services: Improvements to Troubleshooting	1982509

Title	SAP Note
CDESK: CAD user group not set to default value if user does not belong to a user group for group maintenance in Customizing	2028915
Update capability of the KPRO DMS	810391
Update capability of the KPRO DMS	942227
Modified report DMS_KPRO_CHECK1 for KPRO update	942228
DIR has Files with Several Active Content Versions	1302899

A list of additional security relevant SAP HotNews and SAP Notes is also available on SAP Service Marketplace at <https://support.sap.com/en/my-support/knowledge-base/security-notes-news.html>.

3 TECHNICAL SYSTEM LANDSCAPE

3.1 Usage

For more information on the technical system landscape refer to the sources listed in the following table.

Topic	Guide/tool	Quick Link to the SAP Help Portal or SDN
System landscape	Operations Guide	https://help.sap.com/viewer/p/SAP_ENGINEERING_CONTROL_CENTER

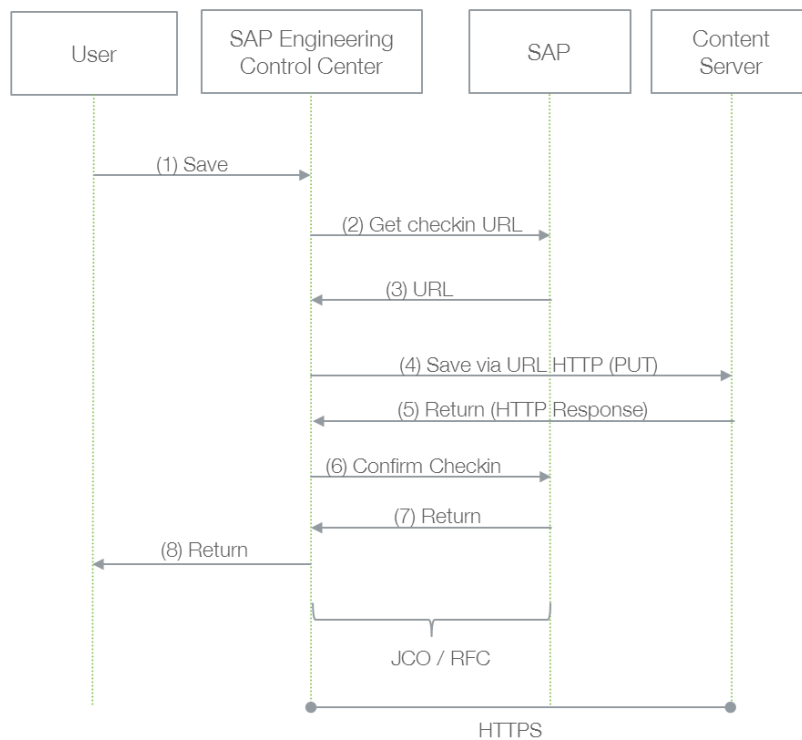
4 SECURITY ASPECTS FOR DATA, IN THE FLOW OF DATA AND IN PROCESSES

The following figure provides an overview of the following processes for SAP ECTR:

- Save
- Take into editing mode
- Password processing

Save

The following figure provides an overview of saving.

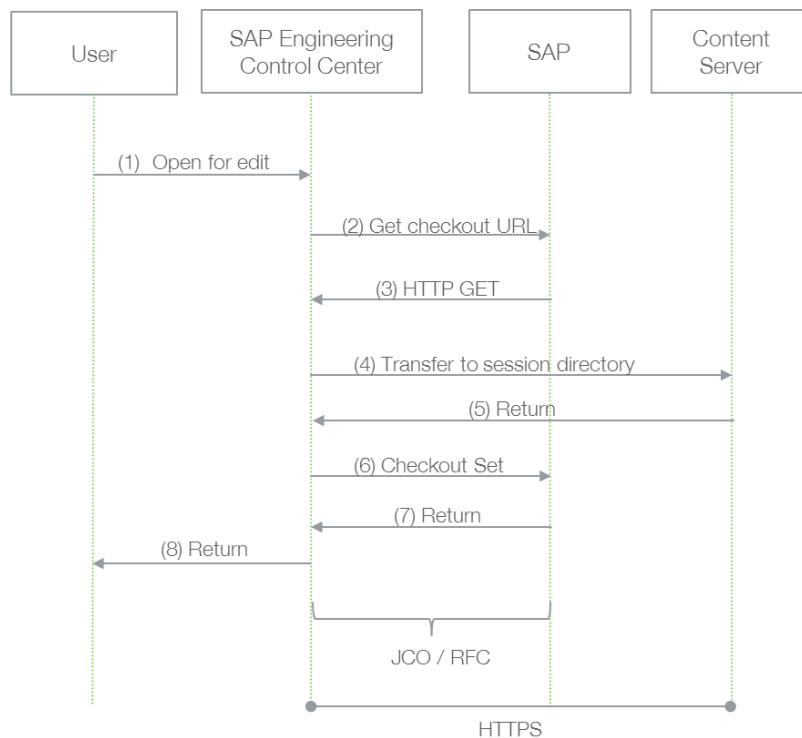


Step	Description	Security Measure
1	The user stores a document in SAP ECTR.	Not relevant
2	The URL for the document is requested.	Not relevant

Step	Description	Security Measure
3	SAP returns the saving URL	RFC
4	Data transfer to the content server with URLs	Transfer protocol HTTPS
5	The content server sends an <code>http-Response</code> to SAP ECTR.	Transfer protocol HTTPS
6	The data transfer to the content server is confirmed in SAP.	RFC
7,8	Return to SAP ECTR.	RFC

Take into editing mode

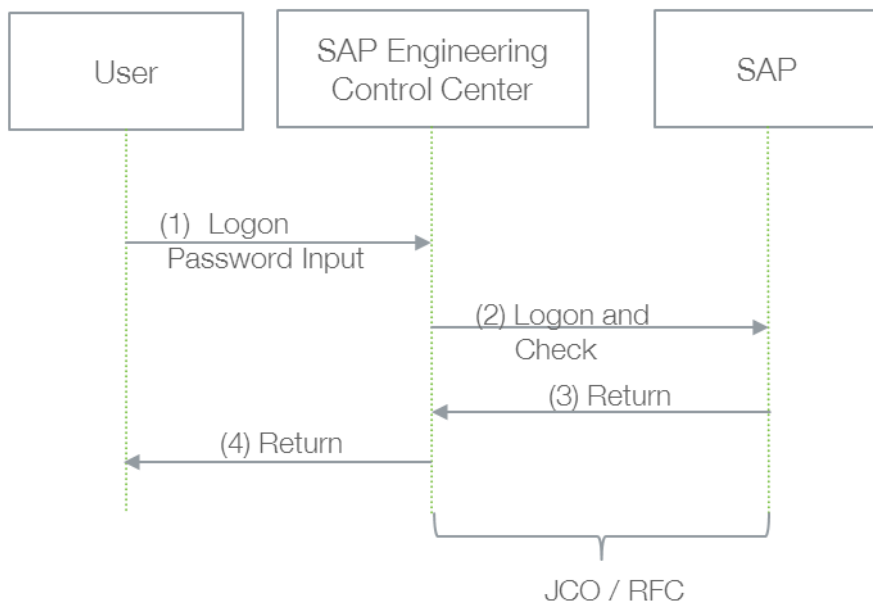
The following figure provides an overview of taking into editing mode.



Step	Description	Security Measure
1	The user starts editing a document in SAP ECTR.	Not relevant
2	The URL for the document is requested.	Not relevant
3	SAP returns the editing URL.	RFC
4	Data transfer to the content server with URLs.	Transfer protocol HTTPS
5	The content server sends an <code>http-Response</code> to SAP ECTR.	Transfer protocol HTTPS
6	The data transfer to the content server is confirmed in SAP.	RFC
7,8	Return to SAP ECTR.	RFC

Password processing

The following figure provides an overview of password processing.



Step	Description	Security Measure
1	The user logs on with the user data.	The password is not displayed when entered
2	Transfer of logon data to SAP JCo and forward to the SAP system for checking.	SNC / RFC, passwords are encrypted
3	Feedback whether the logon was successful and the session object is for the currently valid session.	RFC
4	Feedback to user.	Not relevant

5 JAVA IMPLEMENTATIONS IN SAP ECTR

Several Java implementations exist. SAP ECTR is based on SAP JVM and SAP JVM is in turn based on Java SE 8. Java implementations other than those provided by SAP are not tested and therefore not supported.

SAP pays attention to security in its Java implementations. No browser add-ins are used. Only various .dll and .exe files are saved on the hard disk. An installation does not take place. The mentioned files are only called with user rights at runtime.

6 DATA PROTECTION

Data protection is associated with numerous legal requirements and data protection concerns. In addition to compliance with the general data protection laws, compliance with industry-specific legislation in various countries must be observed. This Guide describes how you can support compliance with legal regulations and data protection.

This section and all other sections in this Guide do not indicate whether these features and functions are the best way to support business, industry, regional, or country-specific requirements. In addition, this Guide does not provide advice or recommendations on additional features that would be required in an environment; data protection decisions must be made on a case-by-case basis and in compliance with the given system landscape and applicable regulatory requirements.

6.1 Handling of personal data

For information on how personal data is handled in SAP, please read the SAP note 2627073 and the chapter "Deleting Personal Data" in this Guide.

6.2 Blocking of personal data

It is not possible to block the output of personal data, such as the user name in log files.

6.3 Deleting of personal data

In SAP ECTR, personal data is backed up in various places.

To locate and delete the data, search for the following preference variables in the configuration files:

Variable	Configuration File
PLM_DATAROOT	%PLM_INSTDIR%\customize\config\plm_initialize.bat
PLM_TEMPBASE	%PLM_INSTDIR%\customize\config\plm_initialize.bat
PLM_COMMONDIR	%PLM_INSTDIR%\customize\config\plm_setenv.bat
PLM_LOGDIR	%TEMP%\SAP\ECTR\%PLM_INSTID%\logs

Data can also be stored in the following files, depending on the customizing:

Directory	File Name
%PLM_INSTDIR%\customize\config\	attributes-from-sap.xml
%PLM_INSTDIR%\customize\config\	attributes-to.sap.xml

In addition, personal data may be stored in the temporary Windows folder. To find them, please enter %TEMP% in your Windows Explorer.

Deleting this data has no effect on SAP ECTR operation. However, if the log files are deleted, SAP SE can no longer track errors.

www.sap.com/contactsap

© 2022 SAP SE or an SAP affiliate company. All rights reserved.

No part of this publication may be reproduced or transmitted in any form or for any purpose without the express permission of SAP SE or an SAP affiliate company.

The information contained herein may be changed without prior notice. Some software products marketed by SAP SE and its distributors contain proprietary software components of other software vendors. National product specifications may vary.

These materials are provided by SAP SE or an SAP affiliate company for informational purposes only, without representation or warranty of any kind, and SAP or its affiliated companies shall not be liable for errors or omissions with respect to the materials. The only warranties for SAP or SAP affiliate company products and services are those that are set forth in the express warranty statements accompanying such products and services, if any. Nothing herein should be construed as constituting an additional warranty.

In particular, SAP SE or its affiliated companies have no obligation to pursue any course of business outlined in this document or any related presentation, or to develop or release any functionality mentioned therein. This document, or any related presentation, and SAP SE's or its affiliated companies' strategy and possible future developments, products, and/or platform directions and functionality are all subject to change and may be changed by SAP SE or its affiliated companies at any time for any reason without notice. The information in this document is not a commitment, promise, or legal obligation to deliver any material, code, or functionality. All forward-looking statements are subject to various risks and uncertainties that could cause actual results to differ materially from expectations. Readers are cautioned not to place undue reliance on these forward-looking statements, and they should not be relied upon in making purchasing decisions.

SAP and other SAP products and services mentioned herein as well as their respective logos are trademarks or registered trademarks of SAP SE (or an SAP affiliate company) in Germany and other countries. All other product and service names mentioned are the trademarks of their respective companies. See www.sap.com/copyright for additional trademark information and notices.

THE BEST RUN

