

**Scenario Package Documentation**

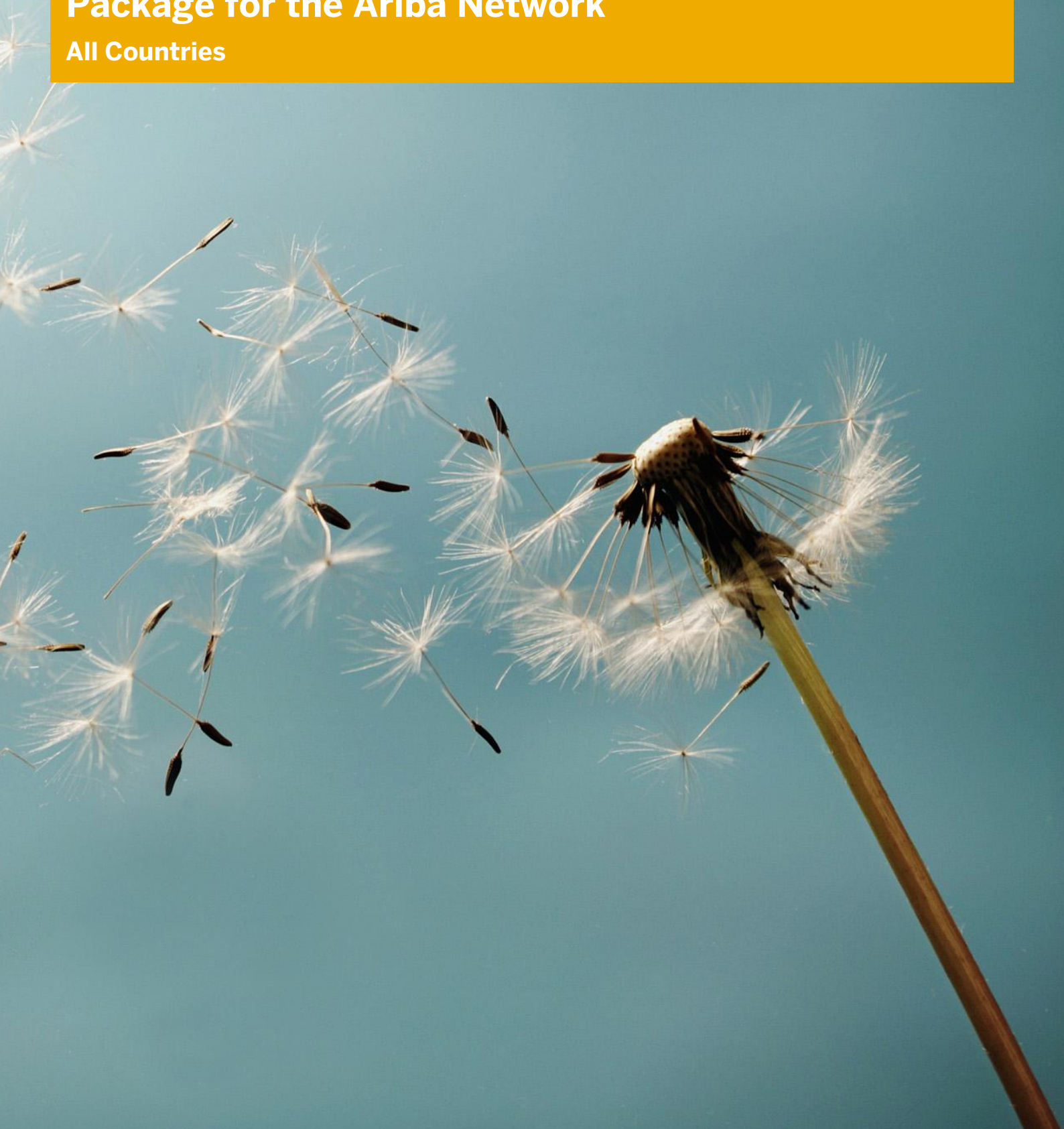
Integration Framework

Document Version: 1.0 – 2013-05-13

**PUBLIC**

# **Configuration of the SAP Business One Integration Package for the Ariba Network**

**All Countries**



# Typographic Conventions

Type Style	Description
<i>Example</i>	Words or characters quoted from the screen. These include field names, screen titles, pushbuttons labels, menu names, menu paths, and menu options. Textual cross-references to other documents.
<b>Example</b>	Emphasized words or expressions.
EXAMPLE	Technical names of system objects. These include report names, program names, transaction codes, table names, and key concepts of a programming language when they are surrounded by body text, for example, SELECT and INCLUDE.
Example	Output on the screen. This includes file and directory names and their paths, messages, names of variables and parameters, source text, and names of installation, upgrade and database tools.
<b>Example</b>	Exact user entry. These are words or characters that you enter in the system exactly as they appear in the documentation.
<Example>	Variable user entry. Angle brackets indicate that you replace these words and characters with appropriate entries to make entries in the system.
EXAMPLE	Keys on the keyboard, for example, F2 or ENTER.

---

# Document History

Version	Date	Change
1.0	2013-05-13	

---

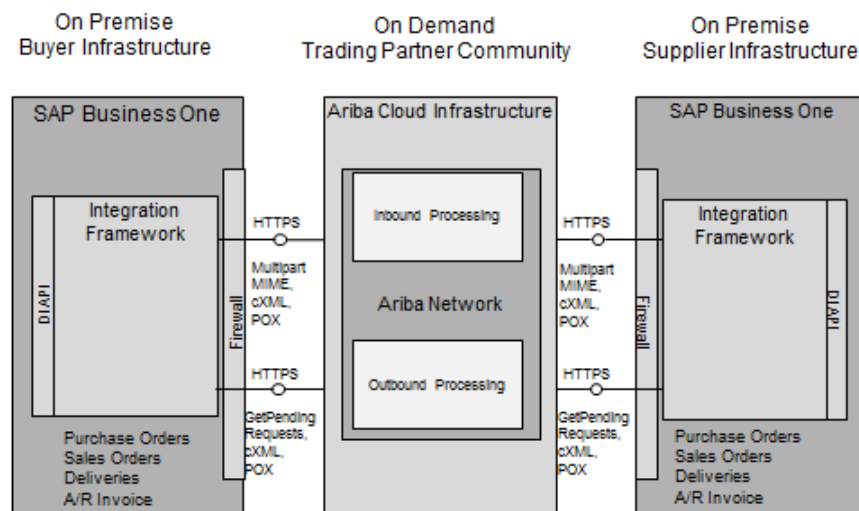
# Table of Contents

<b>1</b>	<b>Solution Overview .....</b>	<b>5</b>
1.1	Introduction.....	5
1.2	Prerequisites.....	6
<b>2</b>	<b>Configuration in the Integration Framework.....</b>	<b>7</b>
2.1	Setting Up SAP Business One Sender Systems.....	7
2.2	Configuring Connections to the Ariba Network.....	8
2.3	Mapping Item Codes.....	8
2.4	Mapping Tax Information.....	9
2.5	Mapping Currency Information.....	9
2.6	Configuring SAP Business One Suppliers.....	10
2.6.1	Defining Buyers.....	10
2.6.2	Providing Identifier Mappings for Customers in SAP Business One.....	10
2.6.3	Mapping Units of Measure.....	11
2.7	Configuring SAP Business One Buyers.....	12
2.7.1	Defining Suppliers.....	12
2.7.2	Providing Identifier Mappings for Suppliers in SAP Business One.....	13
2.7.3	Mapping Units of Measure.....	13
2.8	Setting a Timer for Data Retrieval from the Ariba Network.....	14
2.9	Activating the Integration Package.....	15
<b>3</b>	<b>Configuration in SAP Business One .....</b>	<b>16</b>
3.1	Activating the ARI Integration Package.....	16
3.2	Sending a Purchase Order to the Ariba Network.....	16
3.3	Receiving SAP Business One Messages.....	17
<b>4</b>	<b>Appendix.....</b>	<b>18</b>
4.1	Supported Extrinsic for Purchase Orders and Invoices.....	18
4.2	Importing the Ariba Certificate to Enable HTTPS.....	18

# 1 Solution Overview

## 1.1 Introduction

The Ariba Network is the world's largest trading partner community. With the *SAP Business One integration package for the Ariba Network*, SAP Business One can act as a buyer and supplier in Ariba's collaborative business commerce for order and invoice management. Once the integration package is set up and active in the integration framework, document exchange between SAP Business One and the Ariba Network happens seamlessly and automatically.



Technical Connections and Formats for Message Exchange

The illustration above shows, what the integration package provides:

- In the scenario, SAP Business One company databases can be buyers, suppliers, or both in the onpremise buyer and supplier infrastructure.
- The integration framework uses https to connect to the Ariba Network using cXML (commerce eXtensible Markup Language). To retrieve documents that are available in the Ariba Network, the integration framework uses the `GetPendingRequests` transactions. The integration framework forwards the documents to the SAP Business One databases using the SAP Business One DI API.

### SAP Business One Buyer

An SAP Business One customer acting as a buyer in the Ariba Network can post purchase orders to the Ariba Network. You can configure this in SAP Business One.

The buyer can subsequently receive a delivery document (an advance shipping notice in Ariba) and an A/R invoice from the supplier.

---

### **SAP Business One Supplier**

A SAP Business One supplier acting as a supplier in the Ariba Network can retrieve sales orders from a customer or buyer on the Ariba Network.

The supplier can subsequently post delivery documents and A/R invoices.

The scenario does not support A/R invoice updates.

### **Documents Matching in the Ariba Network**

The Ariba Network ensures that delivery and invoice documents are matched to already existing purchase orders. It uses the `payloadID` and `orderID` elements.

## 1.2 Prerequisites

- You are using SAP Business One 9.0, PLO4 or higher.
- You have finished the onboarding process to the Ariba Network, and you have the required technical information, such as identifiers, and shared secrets available.
- With Ariba Network, you have agreed on currency names you use in your documents.
- In the integration framework, you have connected to all SAP Business One company databases that you want to enable for documents exchange with the Ariba Network.
- With your business partner, you have agreed on the items or articles you want to trade using the Ariba Network. The items codes or known to both parties.

---

## 2 Configuration in the Integration Framework

The integration framework provides the *SAP Business One integration package for the Ariba Network* (`sap.B1Ariba`) scenario package for documents exchange between SAP Business One and the Ariba Network. Before activating the integration package, do the following:

- Set up SAP Business One sender systems  
The integration package requires only the definition of SAP Business One sender systems.
- Configure connections to the Ariba Network
- Map definitions for currency information
- Map item codes of items you want to trade using the Ariba Network
- Map tax code names and Ariba tax categories

The information for the following topics depends on whether you act as a supplier or buyer (customer) in the integration scenario:

- Define business partners, you want to address using the Ariba Network
- Map SAP Business One business partner and Ariba Network identifiers (Ariba Network IDs, ANIDs)
- Map definitions for units of measures

When you have completed the configuration tasks above, define timer settings for data retrieval from the Ariba Network and activate the integration scenario.

### 2.1 Setting Up SAP Business One Sender Systems

Select the SAP Business One company databases that are suppliers, buyers or suppliers and buyers in your integration scenario.

#### Prerequisites

You have defined your SAP Business One company databases in the System Landscape Directory (SLD) and you have tested the connections.

For more information, see [Help → Documents](#), open the *Operations Guide*, and section [4.1 SAP Business One](#)

#### Procedure

1. Logon to the integration framework and provide a user name and password.
2. Choose *Scenarios → Setup*, and in the *Scenario Package Identifier* field, select `sap.B1Ariba`.
3. Click the *Sender* button and select `Define Sender List`.

4. Select the SAP Business One company databases that are suppliers, buyers or both in the integration scenario, click the *Save*, and then the *Close* button.

## 2.2 Configuring Connections to the Ariba Network

For documents exchange, the Ariba Network and the integration framework use https connections. Define connection parameters for each SAP Business One company database that sends documents to or receives documents from the Ariba Network.

### Procedure

1. Logon to the integration framework and provide a user name and password.
2. Choose *Scenarios* → *Setup*, and in the *Scenario Package Identifier* field, select `sap.B1Ariba`.
3. Click the *Data Mgt* button and select the `Table: Preferences.xml` table.
4. To create a new entry, in the *Integration Framework - Table Editor*, click the *Add* button.
5. Provide the following information:
  - In the *Buyer ANID* field, enter the ANID of the buyer in the Ariba Network.  
The identifier usually starts with `AN...`
  - In the *Buyer ANUID* field, enter the user ID of the buyer in the Ariba Network.  
The user ID usually has email format.
  - In the *User Name* field, enter the user name that Ariba has provided to you in the onboarding process.
  - In the *Password* field, enter the password that Ariba has provided to you in the onboarding process.
  - In the *System* field, select the `sysId` of the SAP Business company database.
  - In the *Mode* field, select the `production` option for your productive environment.

## 2.3 Mapping Item Codes

You have agreed with your business partner on the items you trade using the Ariba Network. Provide mapping definitions for item codes.

### Procedure

1. Logon to the integration framework and provide a user name and password.
2. Choose *Scenarios* → *Setup*, and in the *Scenario Package Identifier* field, select `sap.B1Ariba`.
3. Click the *Data Mgt* button and select `Table: vTbl.AribaItemMapping.xml`.
4. To create a new entry, in the *Integration Framework - Table Editor*, click the *Add* button.
5. Provide the following information:
  - In the *PartnerID* field, enter the SAP Business One code of your business partner.

---

If you act as a buyer, this is the code of your supplier

If you act as a supplier, this is the code of your customer.

- In the *AribaItemID* field, enter the identifier your business partner uses for the item.
- In the *B1ItemID* field, enter the identifier of the item in your SAP Business One.
- In the *SysID* field, select the system identifier of the company database in the SLD, where the currencies have been defined.

## 2.4 Mapping Tax Information

The Ariba Network provides seven tax categories. Map your tax categories to the Ariba Network tax categories. For more information, see the Ariba *cXML Solution Guide*

### Procedure

1. Logon to the integration framework and provide a user name and password.
2. Choose *Scenarios → Setup*, and in the *Scenario Package Identifier* field, select `sap.B1Ariba`.
3. Click the *Data Mgt* button and select `Table: vTbl.AribaTaxMapping.xml`.
4. To create a new entry, in the *Integration Framework - Table Editor*, click the *Add* button.
5. For each SAP Business One company database, provide the following information:
  - In the *AribaTaxCategory* field, enter the Ariba Network tax category
  - In the *B1TaxCode* field, enter the tax code in SAP Business One.
  - In the *SysID* field, select the system identifier of the company database in the SLD.

## 2.5 Mapping Currency Information

If the currency names differ in the Ariba Network from the ones in SAP Business One, you can enter mapping definitions in the `vTbl.CurrencyCode.xml` table.

### Procedure

1. Logon to the integration framework and provide a user name and password.
2. Choose *Scenarios → Setup*, and in the *Scenario Package Identifier* field, select `sap.B1Ariba`.
3. Click the *Data Mgt* button and select `Table: vTbl.CurrencyCode.xml`.
4. To create a new entry, in the *Integration Framework - Table Editor*, click the *Add* button.
5. Provide the following information:
  - In the *AribaCCode* field, enter the abbreviation for the currency provided by Ariba.
  - In the *B1CCode* field, enter the currency code in SAP Business One.

---

You can find the entry in SAP Business One, *Administration* → *Setup* → *Financials* → *Currencies*, in the *Code* field.

- In the *Description* field, enter the currency name, for example, **Euro**.
- In the *CardCode* field, enter the business partner code, for which the mapping definition is valid.
- In the *SysID* field, select the system identifier of the company database in the SLD, where the currencies have been defined.

6. Close the window.

## 2.6 Configuring SAP Business One Suppliers

Provide the information described in the following sections, if you are a supplier in the Ariba Network and you have defined your Ariba Network buyers as customers in your SAP Business One company database.

### 2.6.1 Defining Buyers

In the `vTbl.AribaPartner.xml` table, enter your customers in SAP Business One that you want to address as a supplier using the Ariba Network.

#### Procedure

1. Logon to the integration framework and provide a user name and password.
2. Choose *Scenarios* → *Setup*, and in the *Scenario Package Identifier* field, select `sap.B1Ariba`.
3. Click the *Data Mgt* button and select *Table: vTbl.vTbl.AribaPartner.xml*.
4. To create a new entry, in the *Integration Framework - Table Editor*, click the *Add* button.
5. Provide the following information:
  - In the *PartnerID* field, enter the SAP Business One business partner code for the customer or buyer.
  - In the *Type* field, enter **c** for customer.
  - In the *SysID* field, select the system identifier of the company database in the SLD, where the customer has been defined.
6. Close the window.

### 2.6.2 Providing Identifier Mappings for Customers in SAP Business One

Provide information that enables the routing of documents in the Ariba Network to the correct customer or buyer. For each customer that you want to address using the Ariba Network, define your Ariba Network supplier identifier, and enter the supplier shared secret, the customer code of your buyer in your SAP Business One system, and so on.

## Procedure

1. Logon to the integration framework and provide a user name and password.
2. Choose *Scenarios* → *Setup*, and in the *Scenario Package Identifier* field, select `sap.B1Ariba`.
3. Click the *Data Mgt* button and select `Table: vTbl. vTbl.OnBoard.xml`.
4. To create a new entry, in the *Integration Framework - Table Editor*, click the *Add* button.
5. Provide the following information:
  - In the *BuyerAID* field, enter the Ariba Network identifier (ANID) of the buyer.
  - The *VendorCode* field is not relevant.
  - In the *SupplierAID* field, enter your Ariba Network ID (ANID).
  - The *BuyerSS* field is not relevant.
  - In the *SupplierSS* field, enter the shared secret you have received in the onboarding process from the Ariba Network.
  - In the *UserAgent* field, enter **SAP Business One**.
  - In the *MaxMsgs* field, enter the number of messages that the integration framework retrieves in one request transaction from the Ariba Network. We recommend using the value 1.
  - In the *LastReceivedTimestamp* field, the integration framework displays the time, when it has last exchanged information with the Ariba Network. Do not enter anything.
  - In the *SysId* field, select the system identifier of the SAP Business One company database that contains the customer data.
  - In the *CustomerCode* field, enter the customer code of the business partner in your SAP Business One system that is the buyer in the Ariba Network.
  - In the *B1UserCode* field, enter the user code that has assigned the SAP Business One license.
6. Close the window.

## 2.6.3 Mapping Units of Measure

If you and your customers or buyers use different terms for units of measure, you can define the different terms in the `vTbl.UoMMapping.xml` table.

### Prerequisites

You and your buyers have identified the various units of measure and you know which terms your buyers use.

### Procedure

1. Logon to the integration framework and provide a user name and password.
2. Choose *Scenarios* → *Setup*, and in the *Scenario Package Identifier* field, select `sap.B1Ariba`.
3. Click the *Data Mgt* button and select `Table: vTbl.UoMMapping.xml`.
4. To create a new entry, in the *Integration Framework - Table Editor*, click the *Add* button.

- 
5. Provide the following information for each buyer:
    - In the *AribaUoMName* field, enter the term your buyer uses.
    - In the *B1UoMName* field, enter the value of the *UOMName* field.
    - In the *B1UoMCode* field, enter the value of the *UOMCode* field.
    - In the *B1UoMEntry* field, enter the value of the *OUMAbsEntry* field.
    - In the *B1UoMGroup* field, enter the value of the *OUMGroupCode* field.To find the entries in SAP Business One, do the following:
    - From the SAP Business One menu, choose *Tools → Queries → Query Generator*.
    - Select the *OUOM* and the *OUGP* tables.
    - In the *Select* field, enter \* and choose *Execute*.
    - In the *SysID* field, select the system identifier of the SAP Business One company database, for which the mapping definition is relevant.
  6. Close the window.

## 2.7 Configuring SAP Business One Buyers

Provide the information described in the following sections, if you are a buyer in the Ariba Network and you have defined your Ariba Network suppliers as suppliers in your SAP Business One company database.

### 2.7.1 Defining Suppliers

In the `vTbl.AribaPartner.xml` table, define your suppliers in SAP Business One that you want to address as a customer or buyer using the Ariba Network.

#### Procedure

1. Logon to the integration framework and provide a user name and password.
2. Choose *Scenarios → Setup*, and in the *Scenario Package Identifier* field, select `sap.B1Ariba`.
3. Click the *Data Mgt* button and select `Table: vTbl.vTbl.AribaPartner.xml`.
4. To create a new entry, in the *Integration Framework - Table Editor*, click the *Add* button.
5. Provide the following information:
  - In the *PartnerID* field, enter the business partner code for the supplier.
  - In the *Type* field, enter **v** for vendor.
  - In the *SysID* field, select the system identifier of the company database in the SLD.
6. Close the window.

## 2.7.2 Providing Identifier Mappings for Suppliers in SAP Business One

Provide information that enables the routing of documents in the Ariba Network to the correct supplier. For each supplier that you want to address using the Ariba Network, define your Ariba Network buyer identifier, enter the buyer shared secret, the code of your supplier in your SAP Business One system, and so on.

### Procedure

1. Logon to the integration framework and provide a user name and password.
2. Choose *Scenarios* → *Setup*, and in the *Scenario Package Identifier* field, select `sap.B1Ariba`.
3. Click the *Data Mgt* button and select `Table: vTbl. vTbl.OnBoard.xml`.
4. To create a new entry, in the *Integration Framework - Table Editor*, click the *Add* button.
5. Provide the following information:
  - In the *BuyerAID* field, enter your Ariba Network ID.
  - In the *VendorCode* field, enter the SAP Business One supplier code of your business partner.
  - In the *SupplierAID* field, enter the Ariba Network ID of your business partner.
  - In the *BuyerSS* field, enter the shared secret you have received in the onboarding process.
  - The *SupplierSS* field is not relevant.
  - In the *UserAgent* field enter **SAP Business One**.
  - In the *MaxMsgs* field, enter the number of messages that the integration framework retrieves in one request from the Ariba Network. We recommend using the value 1.
  - In the *LastReceivedTimestamp* field, the integration framework displays the time, when it has last exchanged information with the Ariba Network. Do not enter anything.
  - In the *SysId* field, enter the system identifier of the SAP Business One company database that is the supplier.
  - The *CustomerCode* field is not relevant.
  - In the *B1UserCode* field, enter the user code that has assigned the SAP Business One license.

## 2.7.3 Mapping Units of Measure

If you and your suppliers use different terms for units of measure, you can define the different terms in the `vTbl.UoMMapping.xml` table.

### Prerequisites

You and your suppliers have identified the various units of measure and you know which terms your suppliers use.

## Procedure

1. Logon to the integration framework and provide a user name and password.
2. Choose *Scenarios* → *Setup*, and in the *Scenario Package Identifier* field, select `sap.B1Ariba`.
3. Click the *Data Mgt* button and select `Table: vTbl.UoMMapping.xml`.
4. To create a new entry, in the *Integration Framework - Table Editor*, click the *Add* button.
5. Provide the following information for each buyer:
  - In the *AribaUoMName* field, enter the term your supplier uses.
  - In the *B1UoMName* field, enter the value of the UOMName field in SAP Business One.
  - In the *B1UoMCode* field, enter the value of the UOMCode in SAP Business One.
  - In the *B1UoMEntry* field, enter the value of the OUMAbsEntry in SAP Business One.
  - In the *B1UoMGroup* field, enter the value of the OUMGroupCode in SAP Business One.To find the entries in SAP Business One, do the following:
  - From the SAP Business One menu, choose *Tools* → *Queries* → *Query Generator*.
  - Select the `OUOM` table and press the <Tab> key, select the `OUGP` table and press the <Tab> key.
  - In the *Select* field, enter \* and choose *Execute*.
  - In the *SysID* field, select the system identifier of the SAP Business One company database, for which the mapping definition is relevant.
6. Close the window.

## 2.8 Setting a Timer for Data Retrieval from the Ariba Network

The integration package provides the `sap.Ariba.GPSalesOrder` scenario step that uses a timer-based inbound channel. With this channel the integration framework retrieves data from the Ariba Network based on `GetPendingRequest` transactions. Define when and how often the integration framework retrieves data.

### Procedure

1. Logon to the integration framework and provide a user name and password.
2. Choose *Scenarios* → *Setup*, and in the *Scenario Package Identifier* field, select `sap.B1Ariba`.
3. To define timer settings, choose the *Timer* button.
4. Click the *Setup* button behind the scenario step name.
5. In the *Scenario Setup Timer* user interface, define your settings.

For more information, see *Help* → *Documents*, open the *Operations Guide*, section *1.1.4 Defining Scheduler Settings*

---

## 2.9 Activating the Integration Package

To run the integration between SAP Business One and the Ariba Network, activate the *SAP Business One integration package for the Ariba Network* (sap.B1Ariba) integration package in the integration framework.

### Procedure

1. Logon to the integration framework and provide a user name and password.
2. Choose *Scenarios* → *Setup*, and in the *Scenario Package Identifier* field, select sap.B1Ariba.
3. Click the *Activate* button, and in the *Integration Framework - Scenario Setup Result* window, click the *Activate* button, and click *OK*.

---

## 3 Configuration in SAP Business One

### 3.1 Activating the ARI Integration Package

To enable the documents exchange with the Ariba Network, activate the `sap.ARI` (Create Electronic Documents) integration package.

#### Procedure

1. From the SAP Business One menu, choose *Administration* → *Integration Service* → *Integration Packages*.
2. On the *Company* tab, activate the `sap.ARI` (Create Electronic Documents) integration package.

### 3.2 Sending a Purchase Order to the Ariba Network

To send a SAP Business One purchase order to the Ariba Network, you must enable the **Post to Ariba** option in the purchase order.

#### Prerequisites

- You have configured the *SAP Business One integration package for the Ariba Network* (`sap.B1Ariba`) integration package and you have activated it.
- You have opened the purchase order in SAP Business One.

#### Procedure

1. To post a purchase order to the Ariba Network, choose *Purchasing* → *Purchase Order*, and choose the *Logistics* tab.
2. In the *Document Delivery* field, select the **Post to Ariba** option.
3. Save your settings.

#### Result

When a user in SAP Business One creates a purchase order, SAP Business One creates an event with the 22 event ID. The event sender forwards the event to the integration framework. The integration framework triggers the *SAP Business One integration package for the Ariba Network* (`sap.B1Ariba`) integration package. The package converts the purchase order to an Ariba-compliant cXML document and posts it to the Ariba network for the

---

supplier. If the network credentials or supplier credentials are not available or not valid, the integration framework notifies the SAP Business One user with a message.

The purchase order number of the buyer is written to the sales order document *Customer Reference Number* field of the supplier.

### 3.3 Receiving SAP Business One Messages

The integration framework posts SAP Business One messages to SAP Business One in the following cases:

- When it has posted a purchase order to the Ariba Network
- When it has posted a delivery to the Ariba Network
- When it has posted an A/R invoice to the Ariba Network
- When the integration framework is not able to post a document to the Ariba Network.

The message has the following content:

- Subject: Ariba <Document type>  
<Document type> is either Purchase Order, or Delivery, or Invoice
- From: B1i
- To open the document, in the *Document* section, click the *Link Arrow*.

## 4 Appendix

### 4.1 Supported Extrinsic for Purchase Orders and Invoices

The integration package supports the following extrinsics:

Extrinsic	Value, if you are a Supplier	Value, if you are a Buyer
supplierVatID	Your VAT ID (In SAP Business One, <i>Administration</i> → <i>System Initialization</i> → <i>Company Details</i> → <i>Accounting Data</i> , <i>Federal Tax ID 1</i> field)	Business partner VAT ID (customer) (In SAP Business One, <i>Business Partners</i> → <i>Business Partners Master Data</i> , <i>General</i> tab, <i>Unified Federal Tax ID</i> field)
buyerVatID	Supplier VAT ID	Your VAT ID
deliveryDate	Invoice delivery date on item level	Invoice delivery date on item level
startDate	A/R invoice posting date (In SAP Business One, <i>Sales A/R</i> → <i>A/R Invoice</i> , <i>General</i> tab, <i>Posting Date</i> field)	A/R invoice posting date
endDate	A/R Invoice due date (In SAP Business One, <i>Sales A/R</i> → <i>A/R Invoice</i> , <i>General</i> tab, <i>Due Date</i> field)	
invoiceSourceDocument	ExternalPurchaseOrder, or empty	ExternalPurchaseOrder, or empty
invoiceSubmissionMethod	Online	Online

### 4.2 Importing the Ariba Certificate to Enable HTTPS

As of SAP Business One 9.0, PL05, the certificate to enable SSL for the HTTP connection between the integration framework and the Ariba Network is part of the installation program. For SAP Business One 9.0, PL04, you must manually import the certificate.

#### Prerequisites

You have received the certificate from Ariba, and you have copied it to a folder on your SAP Business One server.

---

## Procedure

Use the following command to import the certificate into the keystore:

```
keytool -importcert -trustcacerts -alias tomcat -file <path and file name> -keystore  
<installation folder integration framework>\sapjre_6_64\jre\lib\security\cacerts
```

<path and file name> is the path and the certificate name

<installation folder integration framework> is the folder, where you have installed the integration framework



[www.sap.com/contactsap](http://www.sap.com/contactsap)

© 2013 SAP AG or an SAP affiliate company.  
All rights reserved.

No part of this publication may be reproduced or transmitted in any form or for any purpose without the express permission of SAP AG. The information contained herein may be changed without prior notice.

Some software products marketed by SAP AG and its distributors contain proprietary software components of other software vendors. National product specifications may vary.

These materials are provided by SAP AG and its affiliated companies ("SAP Group") for informational purposes only, without representation or warranty of any kind, and SAP Group shall not be liable for errors or omissions with respect to the materials. The only warranties for SAP Group products and services are those that are set forth in the express warranty statements accompanying such products and services, if any. Nothing herein should be construed as constituting an additional warranty.

SAP and other SAP products and services mentioned herein as well as their respective logos are trademarks or registered trademarks of SAP AG in Germany and other countries.

Please see <http://www.sap.com/corporate-en/legal/copyright/index.epx#trademark> for additional trademark information and notices.