

# The Intelligent Enterprise and SAP Business One

GPO SME Partner Enablement - Global Roll-out SAP Business One  
March 2021

PUBLIC



**REINVENT**

HOW BUSINESSES RUN



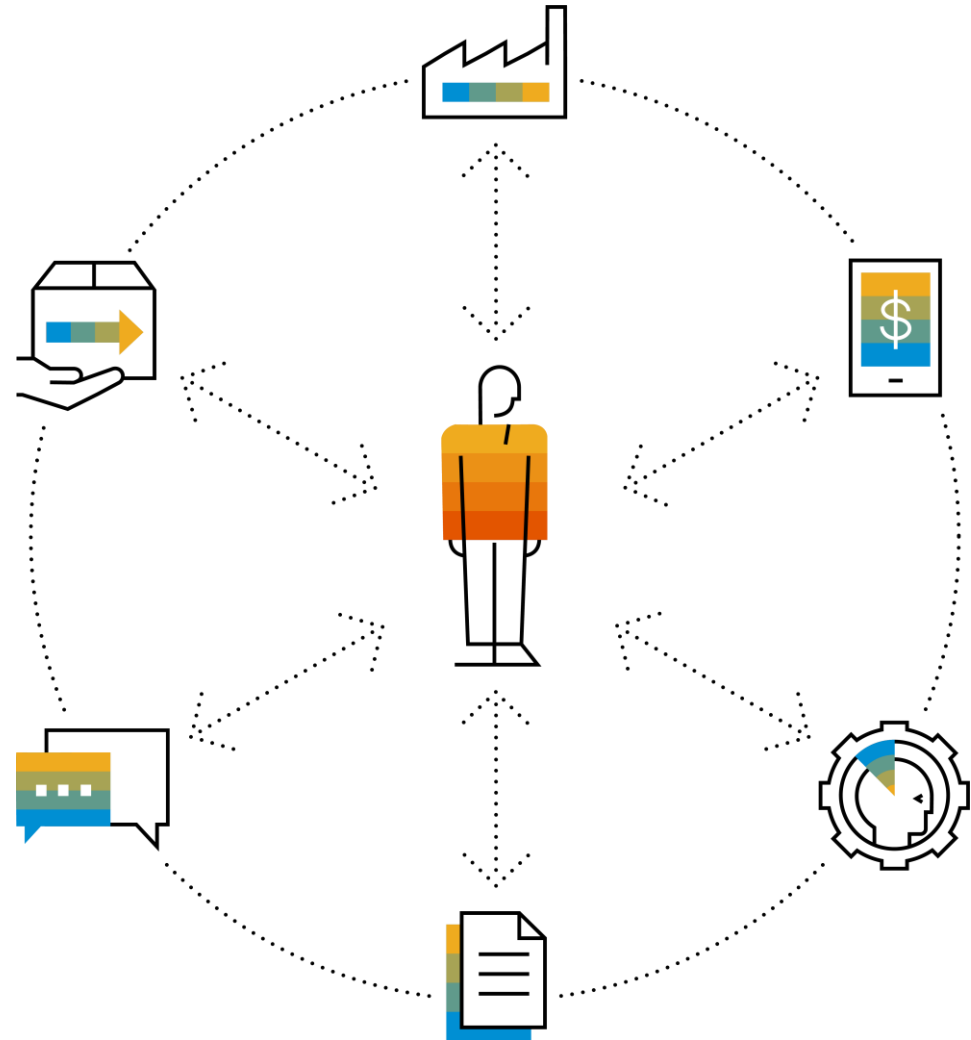
THE BEST RUN 

# What are **Intelligent Enterprises**?

Intelligent Enterprises are **integrated enterprises** that use data to feed their intelligence.

SAP is enabling their customers to become Intelligent Enterprises by

- Integrating data and processes
- Building flexible value chains
- Innovating with industry best practices



# Business Challenges Have Become **Fundamentally Different**



How do you fund – and implement – innovation for tomorrow while still running today's business?



How can you derive more actionable insights from enterprise data to help your business partners react faster to new opportunities?



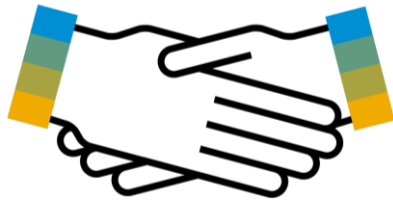
How can you use your data to create an engaging employee experience for all employees?



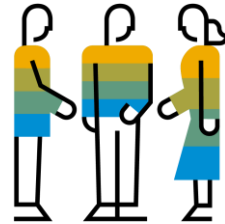
How do you better understand what consumers really want – and how do you deliver the best experience for them?

# Integrate and Transform **Your Enterprise**...

...to provide you the ability to understand and act on the sentiment of your



**Customers**



**Partners**



**Employees**

and to manage your environmental impact to allow you to grow more resilient, more profitable, and more sustainable.

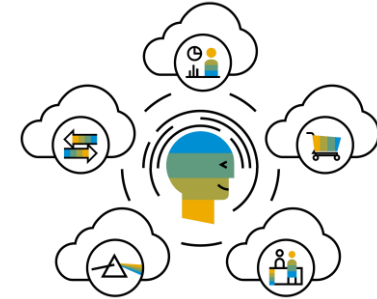
# Benefits of Running as an Intelligent Enterprise



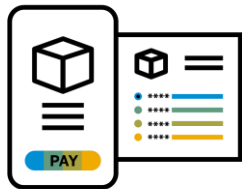
Increase organizational agility, and keep your workforce engaged



Deliver the products and services your customers need



Offer personal, trusted, and connected customer experiences



Control every source and category of spend throughout your business and beyond



Gain insights and increase efficiency to guide your business



Drive continuous innovation with a unified business and technology platform

# SAP Intelligent Enterprise **Framework**

Providing components to help you achieving your goals:

- Intelligent Suite
- Industry Cloud
- Business Technology Platform
- Business Network
- Experience Management
- Sustainability Management
- Business Process Intelligence
- Cloud Infrastructure

Read the Solution Overview: [Best-Run Businesses are Intelligent Enterprises](#)

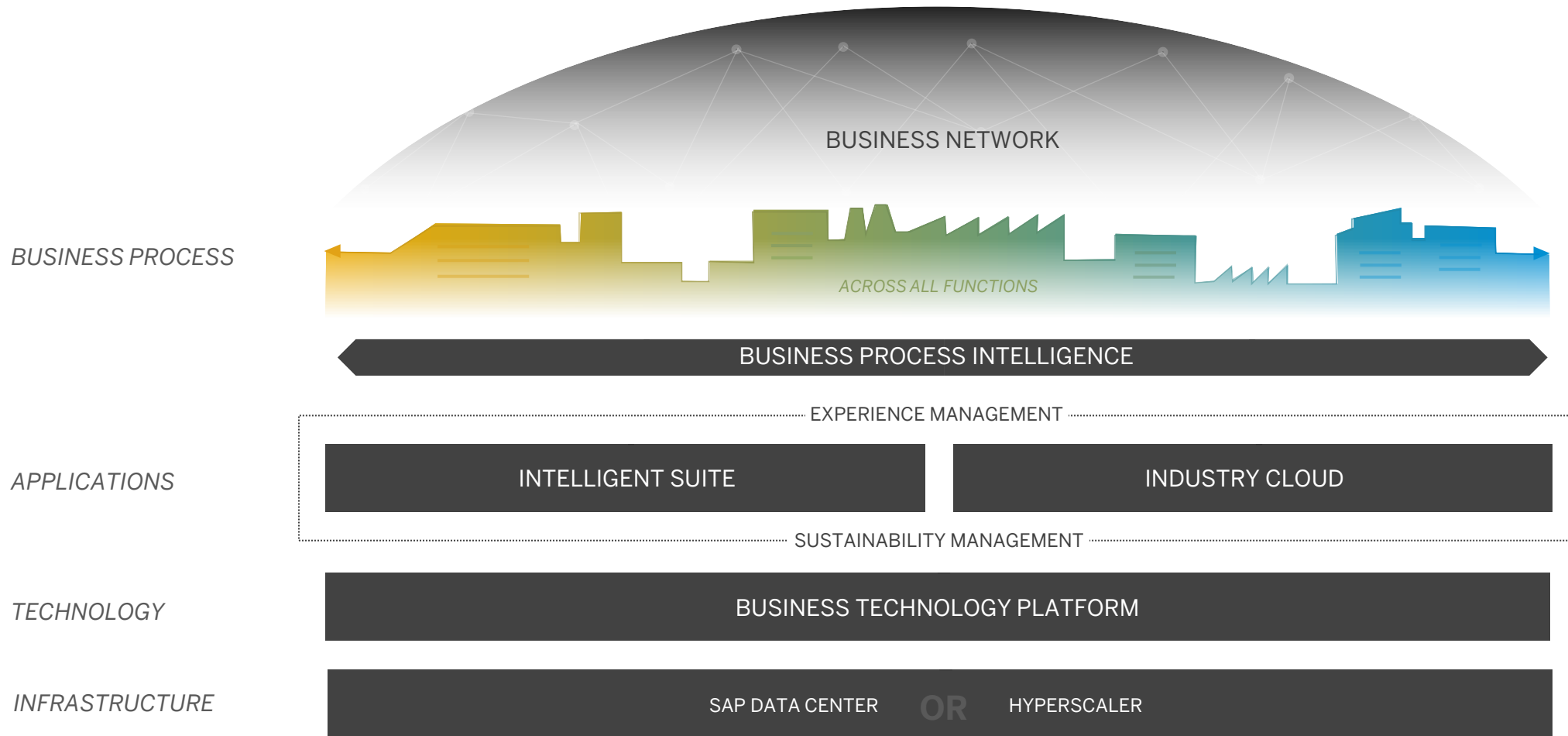
# End-to-End Business Processes

SAP Business One



# SAP Intelligent Enterprise Framework

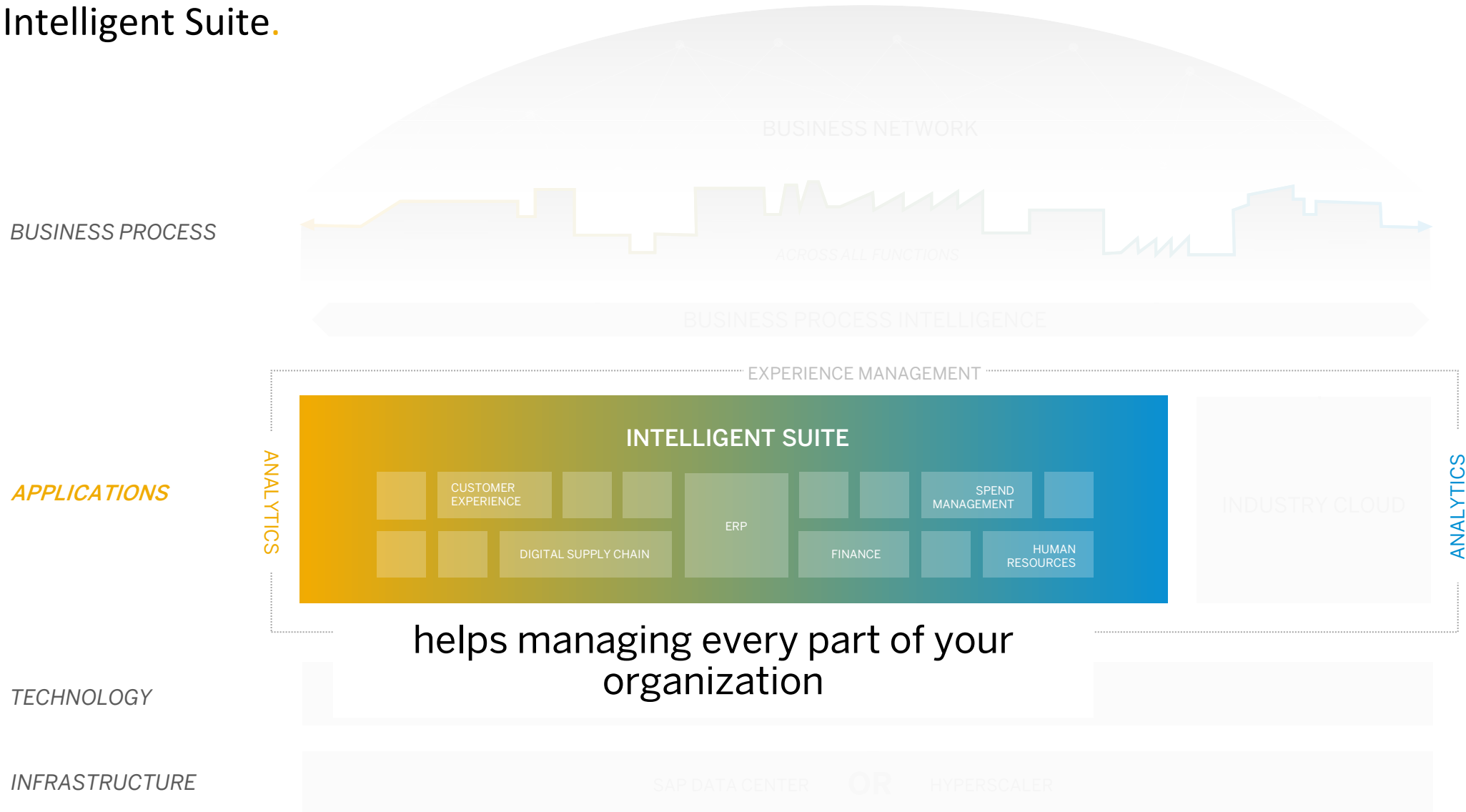
Providing components to help you achieving your goals





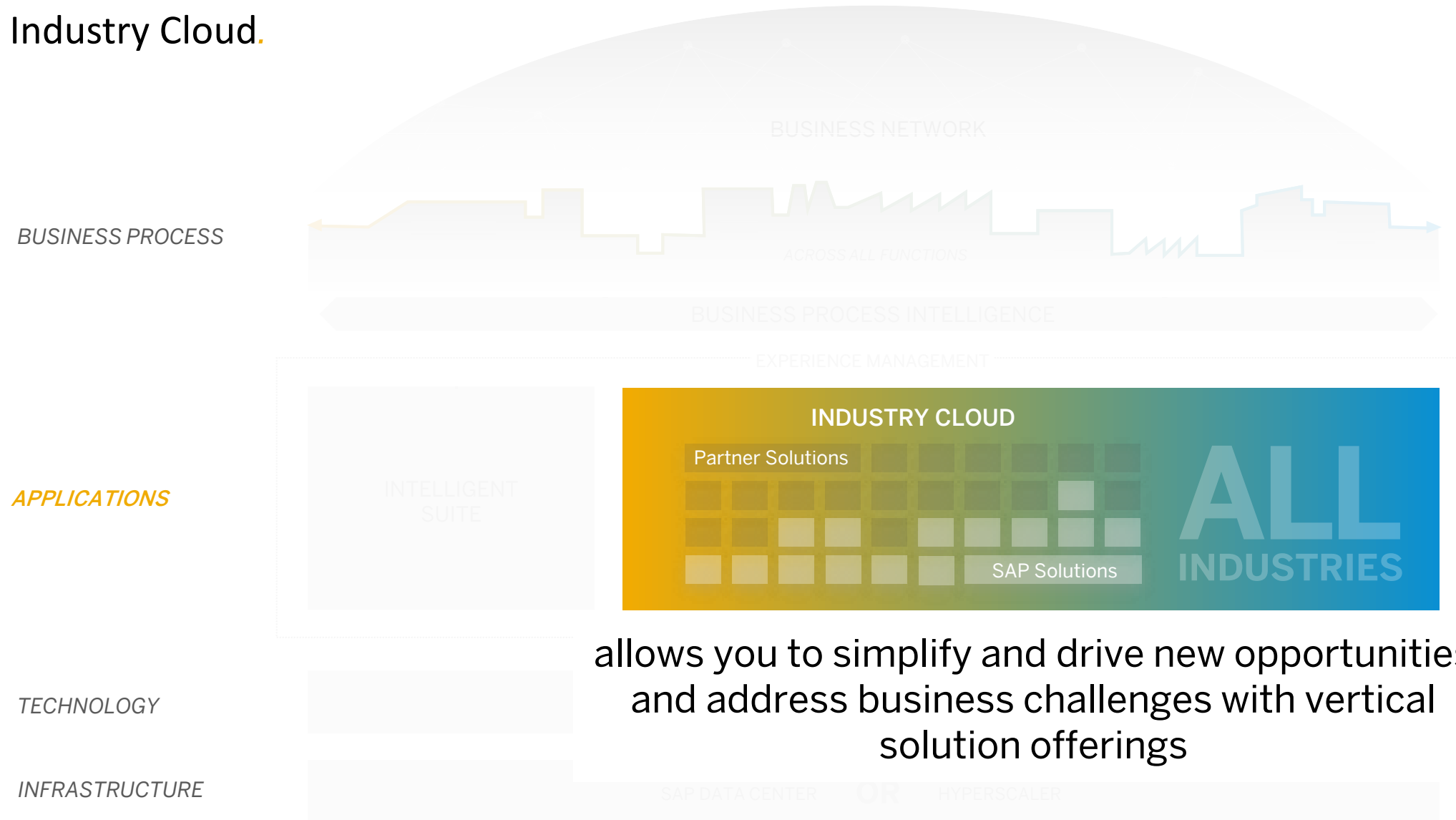
# KEY ELEMENT

## Intelligent Suite.



# KEY ELEMENT

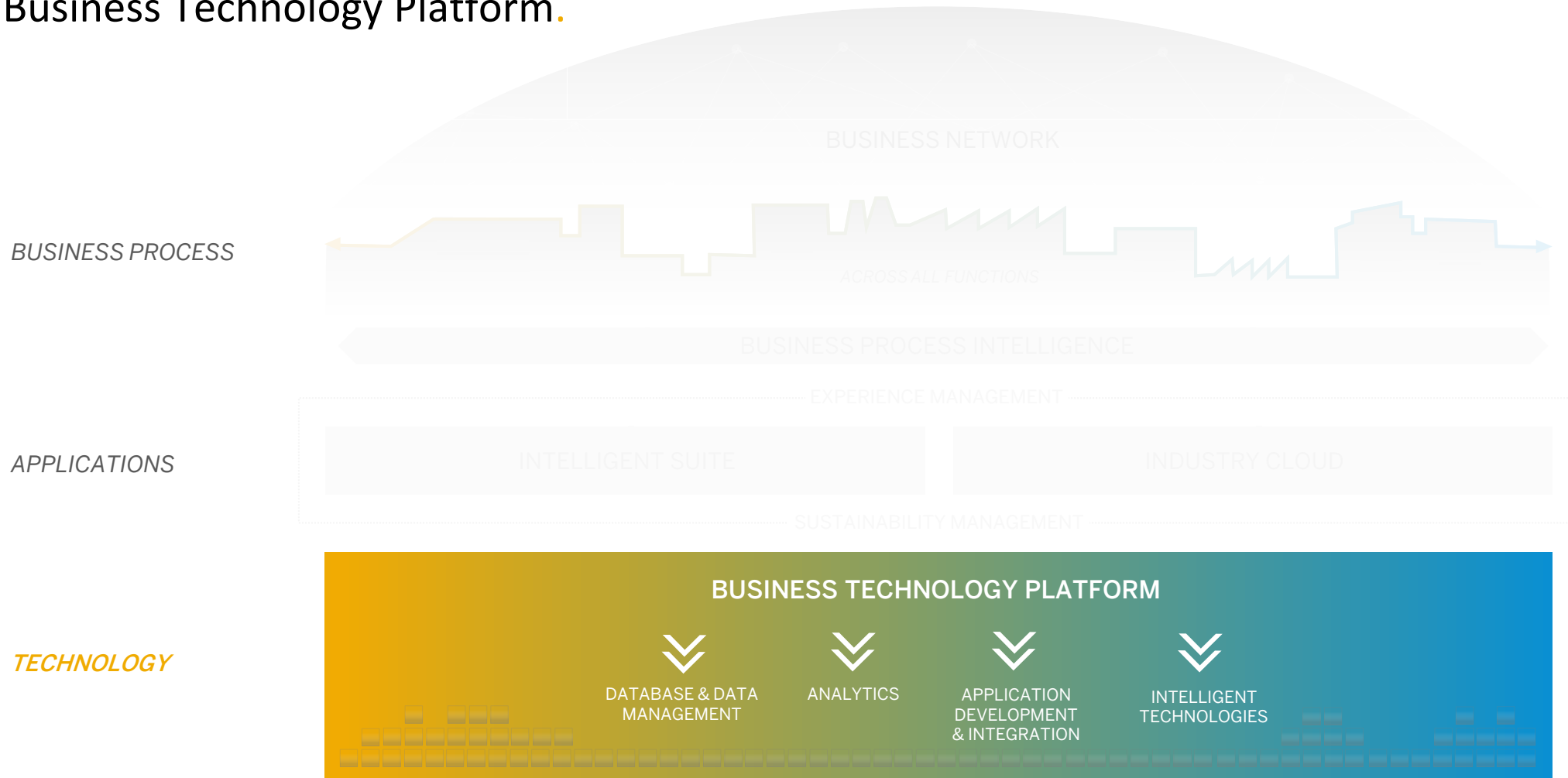
## Industry Cloud.



allows you to simplify and drive new opportunities and address business challenges with vertical solution offerings

# KEY ELEMENT

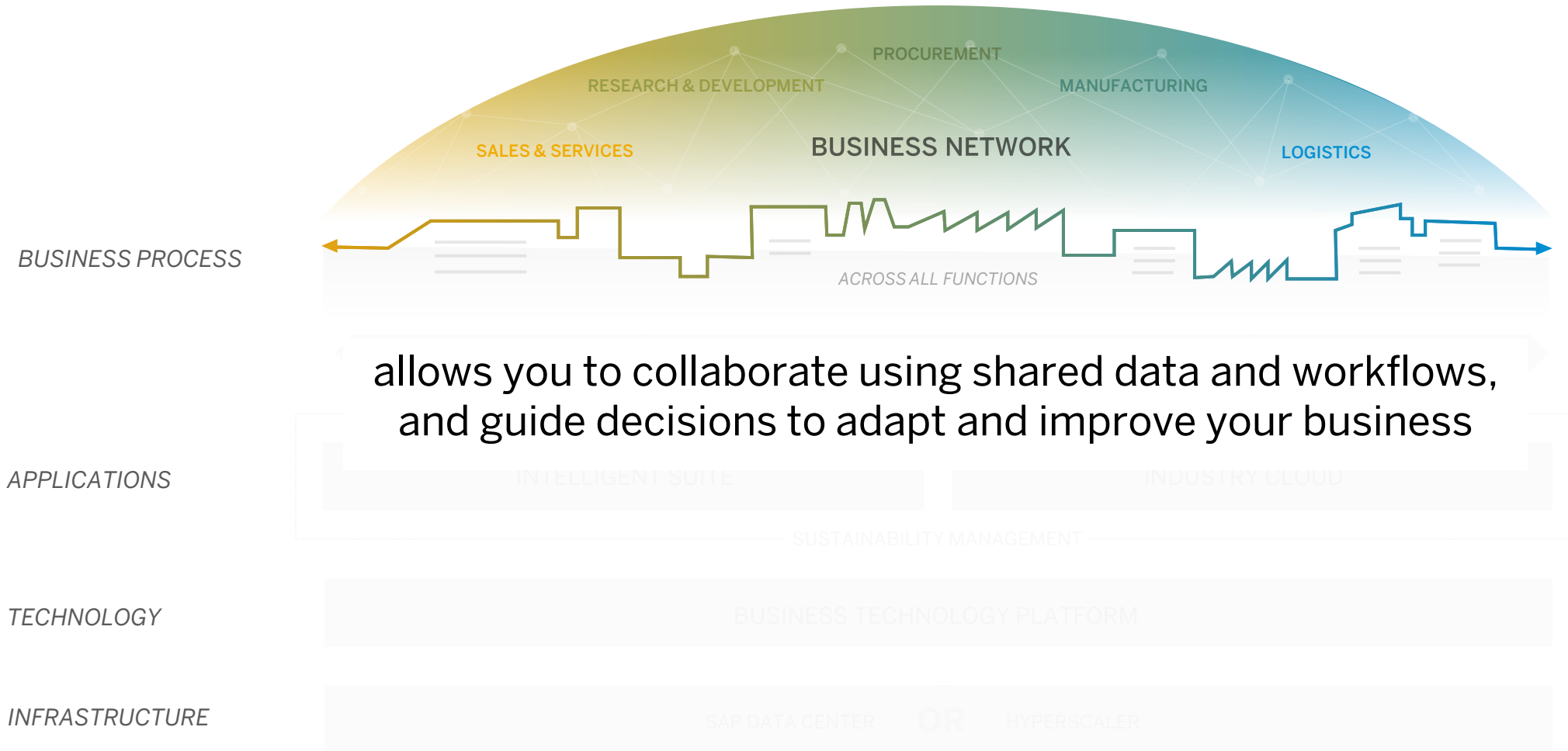
## Business Technology Platform.



provides data management and analytics, supports application development and integration, and allows you to use intelligent technologies to drive innovation

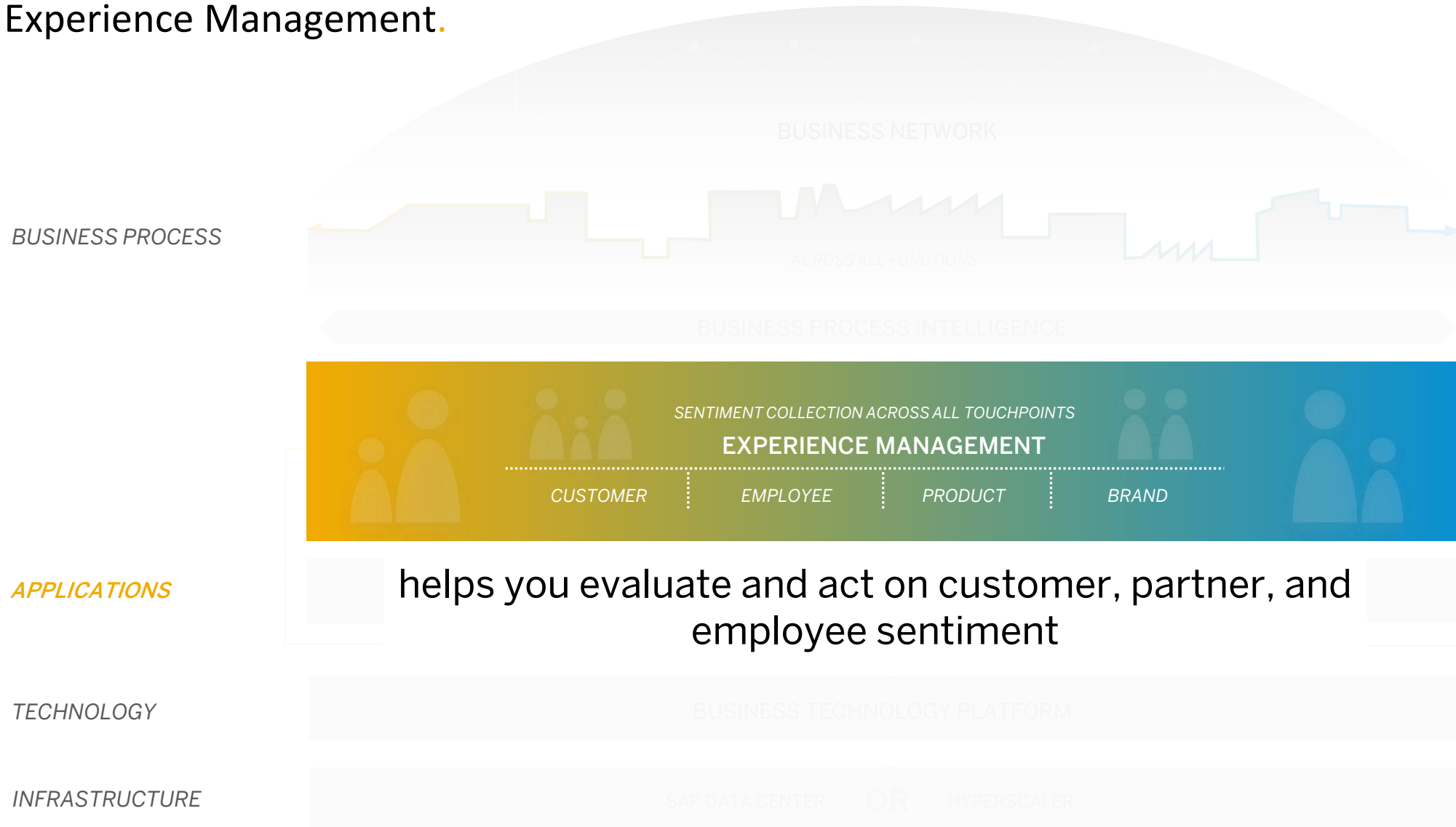
# KEY ELEMENT

## Business Network.



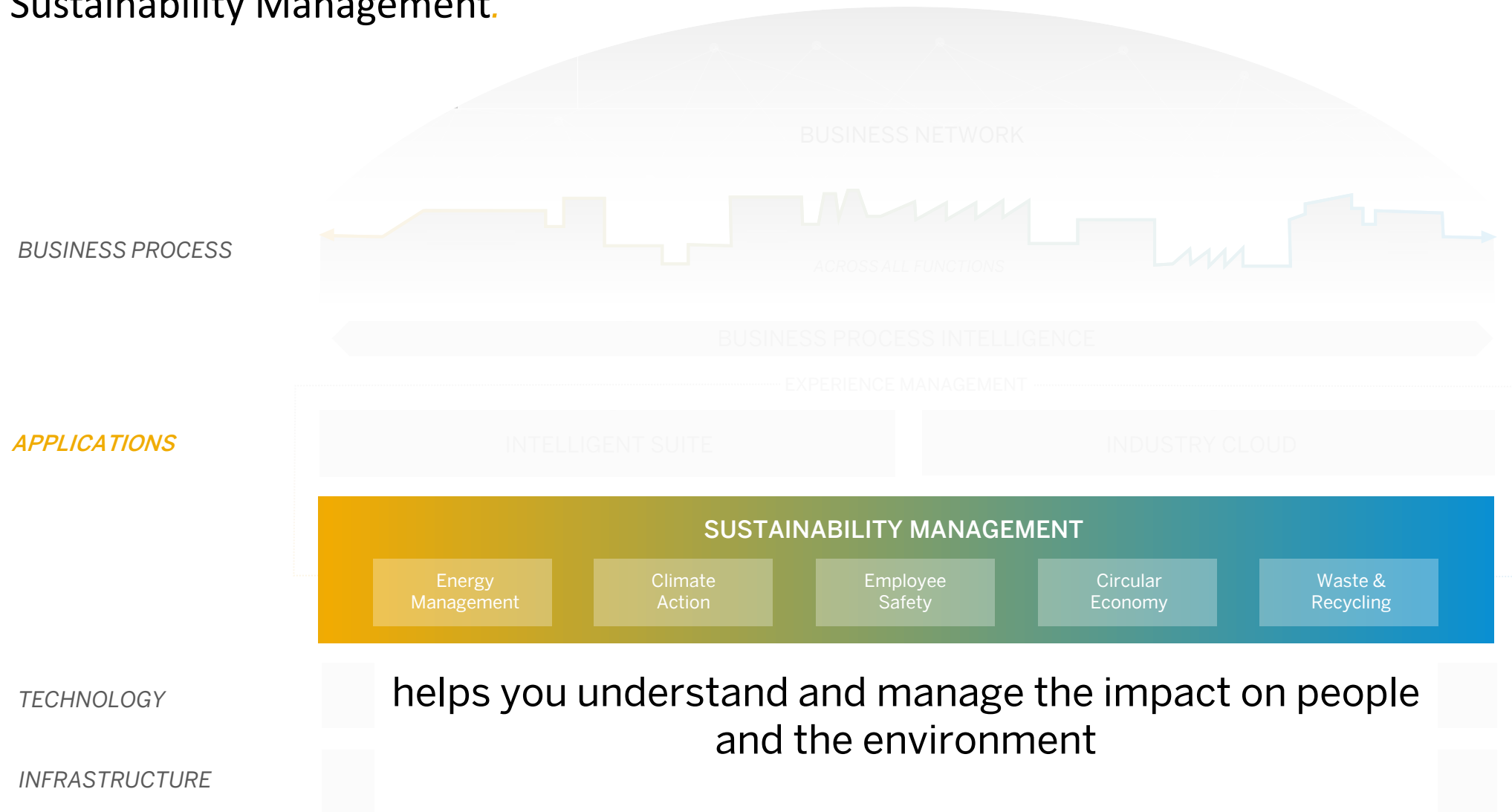
# KEY ELEMENT

## Experience Management.



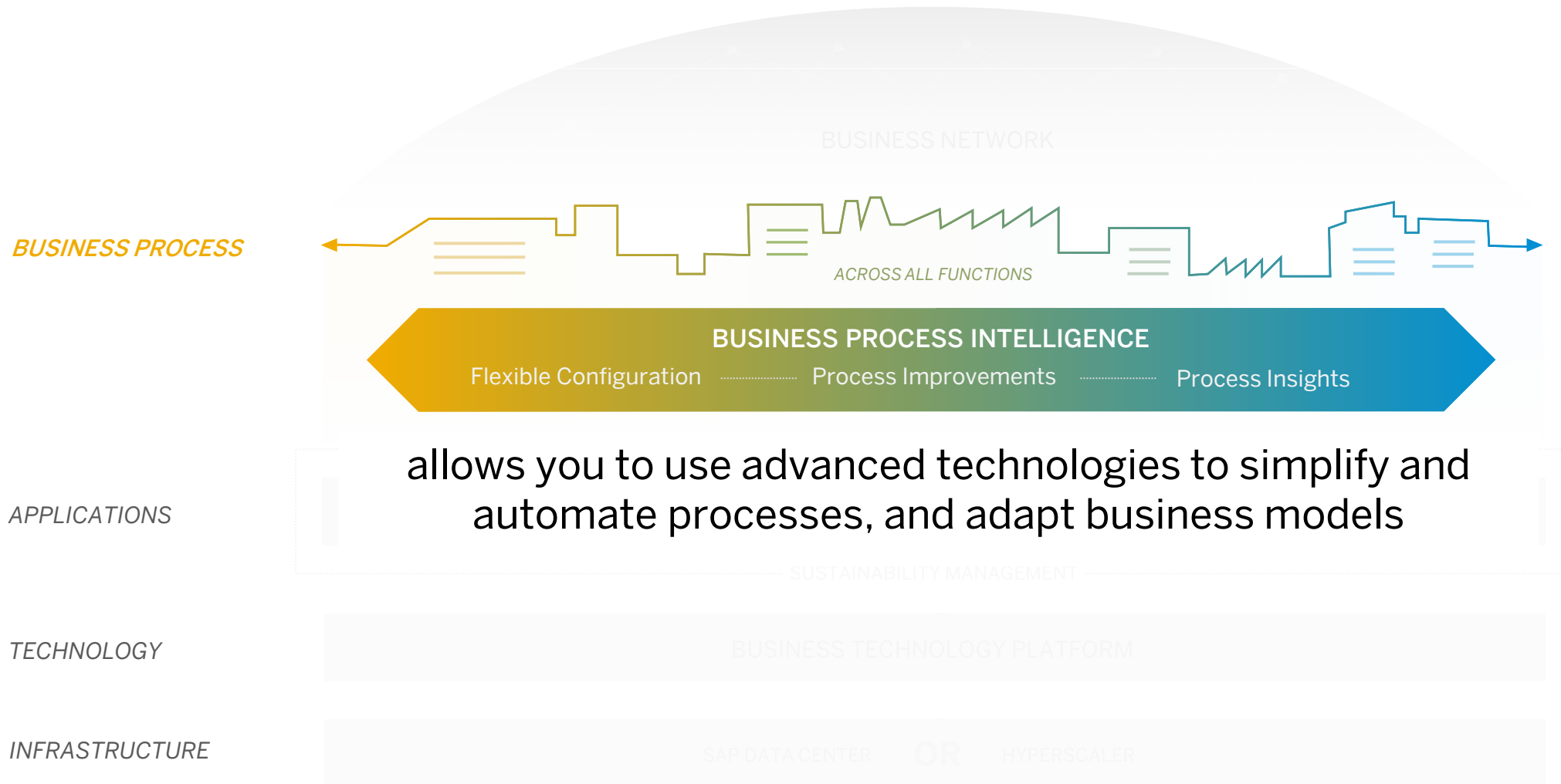
# KEY ELEMENT

## Sustainability Management.



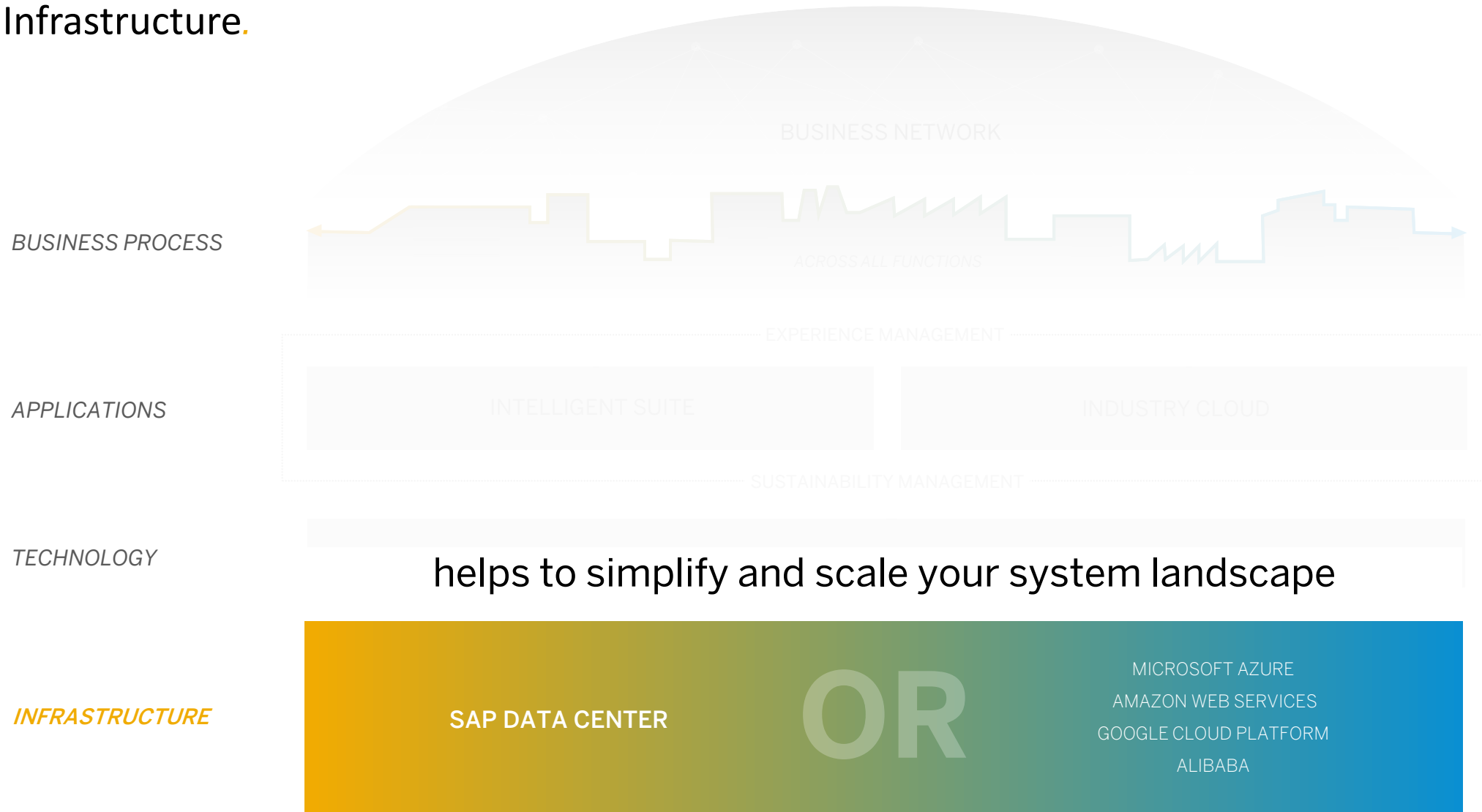
# KEY ELEMENT

## Business Process Intelligence.



# SUPPORTING ELEMENT

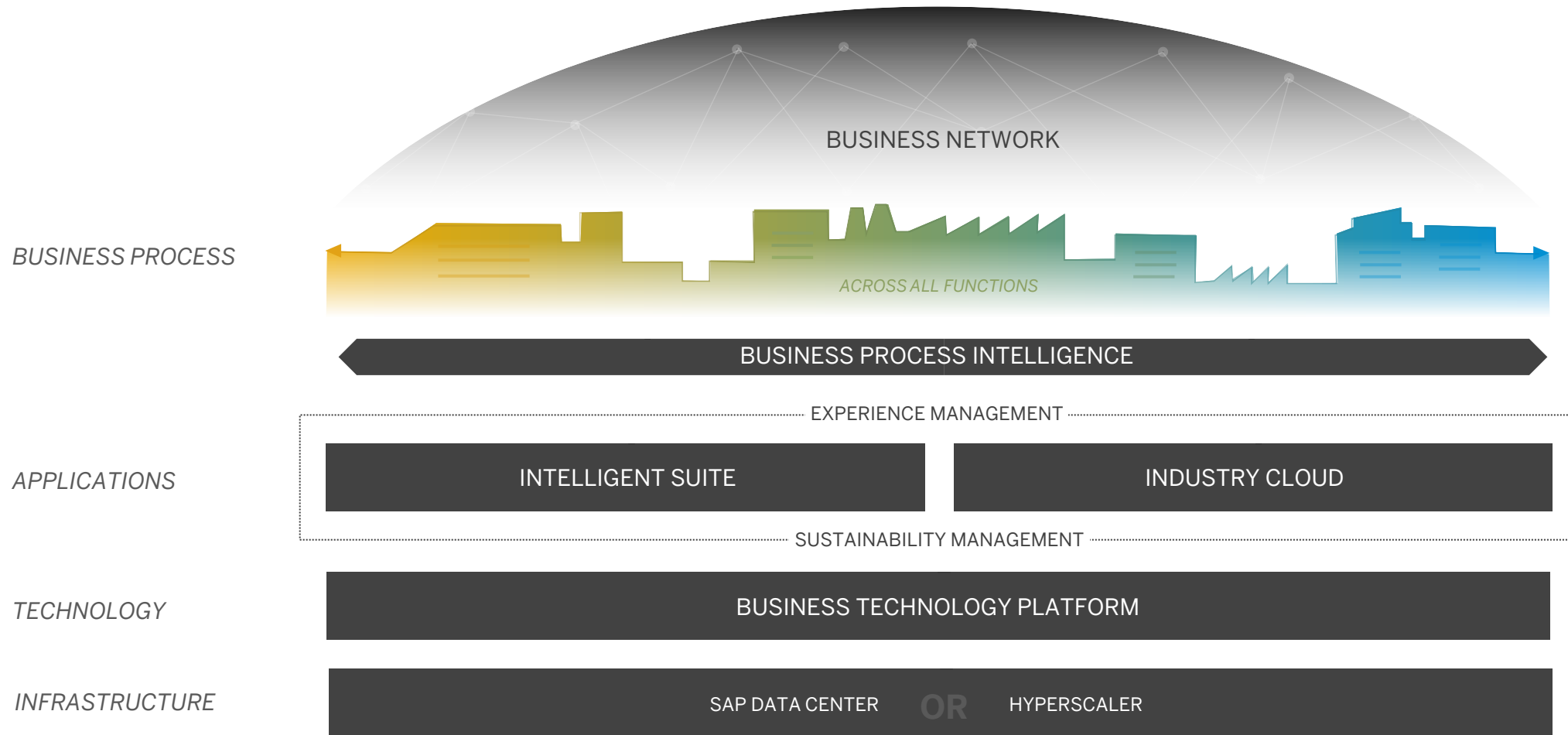
## Infrastructure.





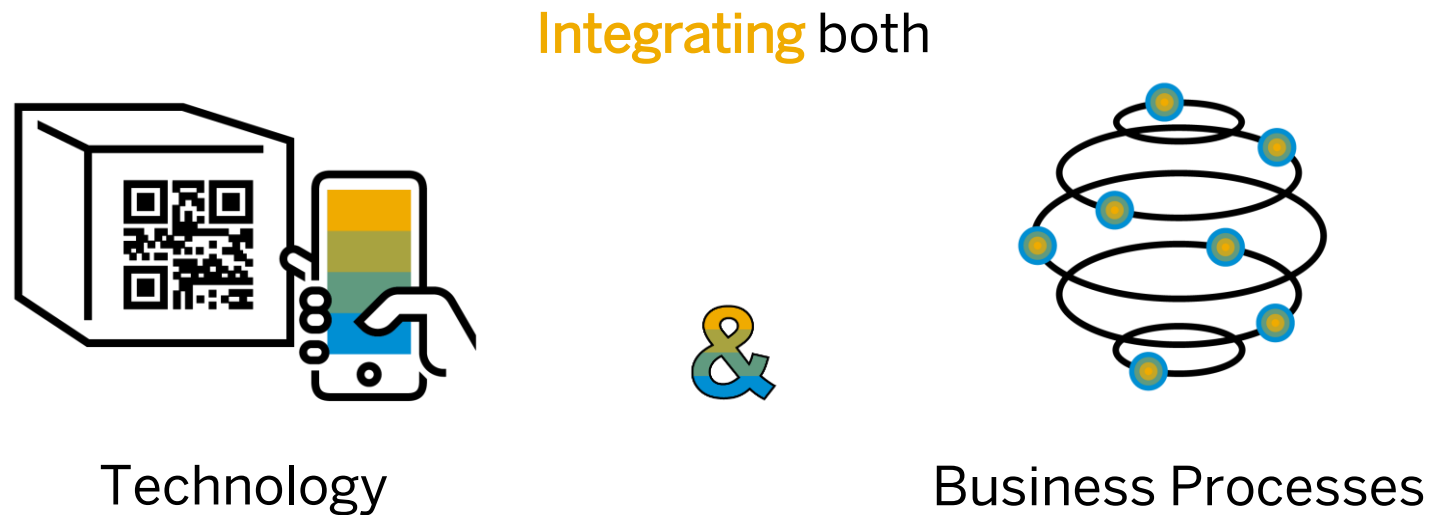
# INTELLIGENT ENTERPRISE

## Evolved Vision.



# The Journey to the Intelligent Enterprise

SAP's holistic integration approach goes far beyond technical integration of applications:



to deliver significant value to your business – helping you become an Intelligent Enterprise.

See [The Intelligent Enterprise](#)



# REINVENT

HOW BUSINESSES RUN



For more information, please see:

- The Intelligent Enterprise
  - [sap.com](https://www.sap.com)
  - [Best-Run Businesses are Intelligent Enterprises](#)
  - [Intelligent Enterprises are Integrated Enterprises](#)
- SAP Business Technology Platform
  - [sap.com](https://www.sap.com)
  - [SAPPartnerEdge.com](https://www.sappartneredge.com)
- [Intelligent Enterprise](#) on [SAPPartnerEdge.com](https://www.sappartneredge.com)

# Thank you.

GPO SME Partner Enablement - Global Roll-out SAP Business One

Follow us



[www.sap.com/contactsap](http://www.sap.com/contactsap)

© 2021 SAP SE or an SAP affiliate company. All rights reserved.

No part of this publication may be reproduced or transmitted in any form or for any purpose without the express permission of SAP SE or an SAP affiliate company.

The information contained herein may be changed without prior notice. Some software products marketed by SAP SE and its distributors contain proprietary software components of other software vendors. National product specifications may vary.

These materials are provided by SAP SE or an SAP affiliate company for informational purposes only, without representation or warranty of any kind, and SAP or its affiliated companies shall not be liable for errors or omissions with respect to the materials. The only warranties for SAP or SAP affiliate company products and services are those that are set forth in the express warranty statements accompanying such products and services, if any. Nothing herein should be construed as constituting an additional warranty.

In particular, SAP SE or its affiliated companies have no obligation to pursue any course of business outlined in this document or any related presentation, or to develop or release any functionality mentioned therein. This document, or any related presentation, and SAP SE's or its affiliated companies' strategy and possible future developments, products, and/or platforms, directions, and functionality are all subject to change and may be changed by SAP SE or its affiliated companies at any time for any reason without notice. The information in this document is not a commitment, promise, or legal obligation to deliver any material, code, or functionality. All forward-looking statements are subject to various risks and uncertainties that could cause actual results to differ materially from expectations. Readers are cautioned not to place undue reliance on these forward-looking statements, and they should not be relied upon in making purchasing decisions.

SAP and other SAP products and services mentioned herein as well as their respective logos are trademarks or registered trademarks of SAP SE (or an SAP affiliate company) in Germany and other countries. All other product and service names mentioned are the trademarks of their respective companies.

See [www.sap.com/trademark](http://www.sap.com/trademark) for additional trademark information and notices.

