



SAP Profitability and Performance Management **Process Mining on S/4 HANA – Production Planning**

In a nutshell ...

„Process mining is the key to enterprise efficiency.“

\$1.4B

license market in
2018, going to
triple in 2020
(Gartner*)

x 10

market growth
until 2025
(Gartner*)

\$343B

bigger consulting
use case scope
by 2020
(Gartner*)

\$768B

growth of digital
transformation in
manufacturing
market by 2025
(Mordor Int.*)

The Process Mining on S/4 HANA - Production Planning enables you to discover and monitor your business processes, identify inefficiencies and deliver priorities for optimization. It also provides actual drivers based on facts for your profitability and cost management.

Why Process Mining on S/4 HANA - Production Planning?



Fast go live thanks to predefined content, SAP S/4 HANA and ERP integration.



In addition to Production Planning process, other business processes are available: Purchase to Pay, Order to Cash, Accounts Payable, Accounts Receivable, Claims Management, Warehouse Management, etc.



Discover and monitor frequency, throughput time.



Determine automation rate and compliance rate.



Leverage built-in simulation capabilities.



Benefit from extreme calculation speed on the huge process event data volume.

What should SAP customers do?

Deploy the Process Mining on S/4 HANA Production Planning

- Cloud or on-premise



Activate the connection to SAP S/4 HANA & ERP

- In case of non-SAP systems connect to the relevant ERP data

(Corporate Data)



Maintain mapping rules

- Map your manufacturing data to standardized production industry sector and region codes



Go live!

- Run and simulate using the standard solution



Optional

Add customer journey information

- Extend your model by adding customer interaction and experience data, if available



Add further dimensions

- Improve your model by adding further dimensions for analysis, if available



Add custom activity information

- Improve your model by adding further events and activities information, if available

Inhouse process mining experts or consulting partners can customize the application using state-of-the-art SAP Profitability and Performance Management visual modeling

Model

Uses your most trusted data

- Connects to your production data as the primary source.

Uses best practices SAP metrics

- Uses best practices SAP metrics based on official event logs to get reliable results.

Built-in traceability

- Calculates on granular level throughout the whole process.

Ready to benchmark

- Allows to compare the KPI's against other companies of your group and regions.



Workflow

Predefined Process Template

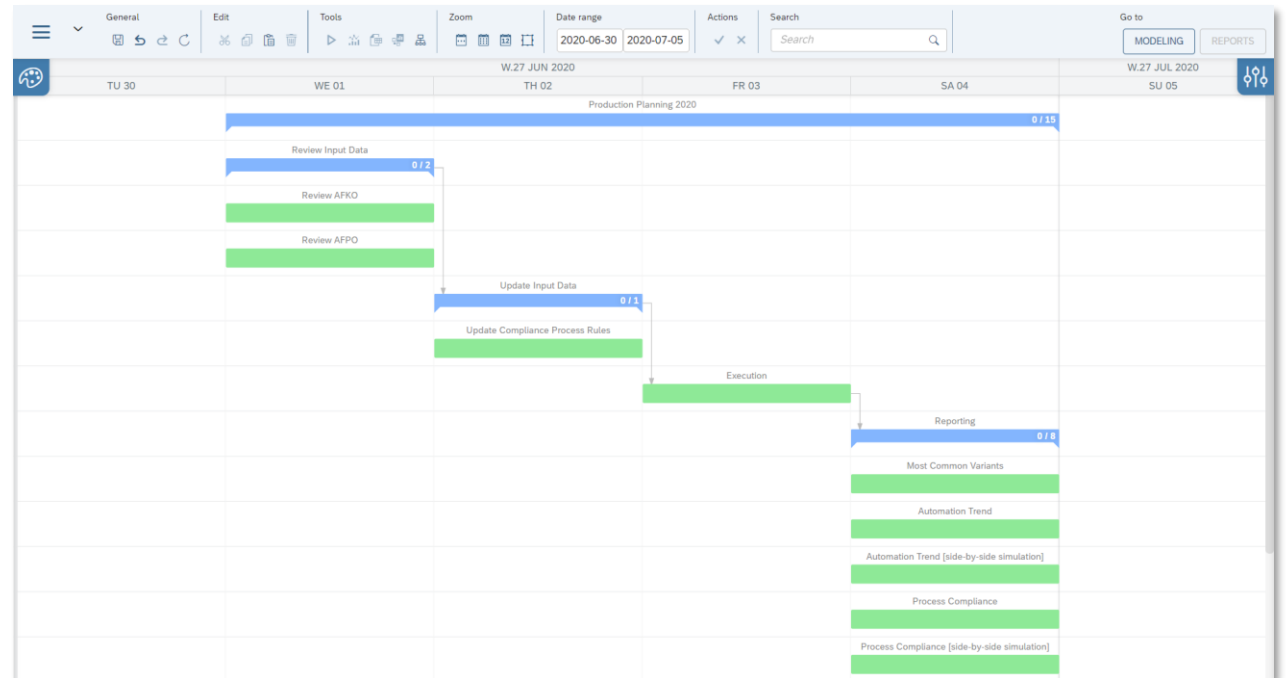
- A predefined process template orchestrates the periodic process mining update in the company and the teams involved. It comprises all activities with their dependencies and can be easily adapted if needed.

Workflow

- A four-eyes principle workflow can be used to further structure the review process with submissions and approvals.

Traceability and Auditability

- The execution of all activities is logged and permanently available for evaluations and audits.



Simulation and Reporting

Predefined Reports

- Predefined results reports include visualizations and KPIs for process and activity frequency, throughput time, automation rate, compliance rate and thus optimization potential, which are easily adjusted to individual needs.

Interactive What-If Simulation

- Built in simulation capabilities allow to calculate the model with different parameters and assumptions.

Ad-Hoc Analysis

- The Ad-hoc analysis provides pivot tables and charts with powerful drill-down, slice and dice capabilities for large-scale data mining.

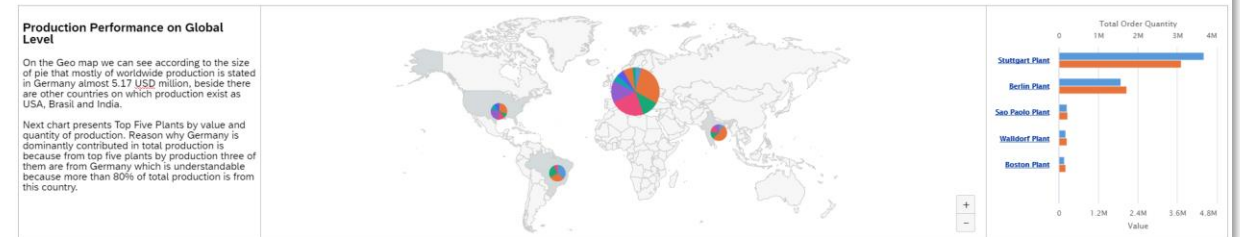


Production Planning at a Glance

Production planning gives us insight into all segments of the production process. This can reduce and eliminate any excessive costs, save time and improve certain activities. The movement of the production order is monitored from the moment of creation through realization to the final destination, as well as the steps from the delivery of the material to its storage. This will help you to find out which products were produced on time, too soon or too late, compared to actual and planned dates. Solution will help you to easily identify highest-value manual steps which can be automated. Various indicators are used to track improvements in production activities, procedures, efficient use of resources and time.

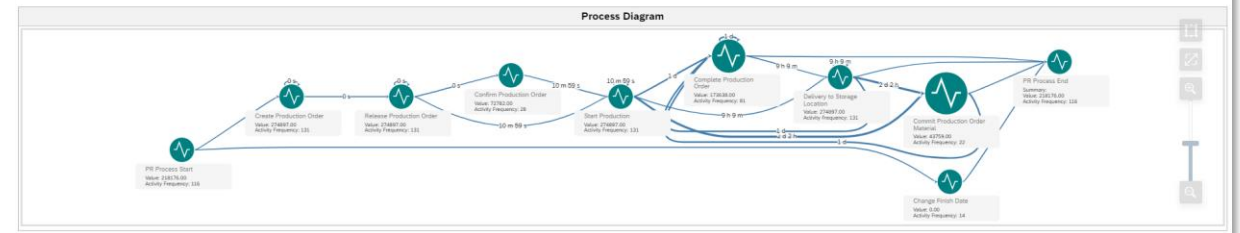
Throughput (Days)	Production Order Value (USD)	Activity Throughput (Days)	Right First Time	Automation Rate	Compliance Rate
1,9	7,63 m	1,3	0,62	0,53	0,80

Worldwide Production



Production Planning Process

This diagram will give end users possibility to perceive overall process visually with all corresponding activities. By using different dimensions, Country or Company Code, end users are able to compare different processes for different countries or company codes. In case end user wants to analyze overall process, regardless of the dimensions, it could be done as in diagram below.



Summary

- SAP Profitability and Performance Management comes with a predefined content for Process Mining on S/4 HANA – Production Planning.
- The predefined content as well as the integration of S/4 HANA and SAP ERP ensure high degree of automation and a short implementation time.
- Works directly on original ERP data, no data redundancy.
- Covers production planning process but also other important business processes are covered in another contents such as: purchase-to-pay, order-to-cash, accounts payable, accounts receivable, etc.
- State-of-the-art user interface is attractive for data scientists and process mining experts. Ideal to extend the model without coding.
- Optionally the results can be used as driver-input for the Profitability and Cost Management content, to do allocations based on real measured frequencies and throughput times.