

# **External Requirement API in Focused Build for SAP Solution Manager**

How to integrate external requirement tools

July 2022

# TABLE OF CONTENTS

1	OVERVIEW.....	4
2	TECHNICAL PREREQUISITES.....	6
3	READ A REQUIREMENT IN FOCUSED BUILD FROM AN EXTERNAL TOOL.....	6
3.1	OData Web Service Endpoint .....	6
3.2	OData Request Payload Format.....	7
3.3	OData Response Payload Format.....	7
3.4	Example Call.....	8
4	CREATE A REQUIREMENT IN FOCUSED BUILD FROM AN EXTERNAL TOOL.....	15
4.1	OData Web Service Endpoint .....	15
4.2	OData Request Payload Format.....	16
4.3	OData Response Payload Format.....	17
4.4	Example Call.....	17
5	CHANGE THE HEADER ATTRIBUTES OF A REQUIREMENT IN FOCUSED BUILD FROM AN EXTERNAL TOOL.....	18
5.1	OData Web Service Endpoint .....	18
5.2	OData Request Payload Format.....	19
5.3	Example Call.....	19
6	POST A NEW TEXT TO A REQUIREMENT IN FOCUSED BUILD FROM AN EXTERNAL TOOL.....	19
6.1	OData Web Service Endpoint .....	19
6.2	OData Request Payload Format.....	20
6.3	OData Response Payload Format.....	21
6.4	Example Call.....	21
7	CHANGE THE WRICEF ATTRIBUTES OF A REQUIREMENT IN FOCUSED BUILD FROM AN EXTERNAL TOOL.....	21
7.1	OData Web Service Endpoint for Creation .....	21
7.2	OData Web Service Endpoint for Deletion .....	22
8	SEND AN ATTACHMENT TO A REQUIREMENT IN FOCUSED BUILD FROM AN EXTERNAL TOOL .....	23
8.1	OData Web Service Endpoint .....	23
8.2	OData Request Payload Format.....	24
8.3	OData Response Payload Format.....	24
8.4	Example Call.....	24
9	SEND AN URL ATTACHMENT TO A REQUIREMENT IN FOCUSED BUILD FROM AN EXTERNAL TOOL (FROM SUPPORT PACKAGE 9) .....	25
9.1	OData Web Service Endpoint .....	25
9.2	OData Request Payload Format.....	25

9.3	OData Response Payload Format.....	26
9.4	Example Call.....	26
10	<b>CHANGE A BUSINESS PARTNER OF A REQUIREMENT IN FOCUSED BUILD FROM AN EXTERNAL TOOL.....</b>	<b>26</b>
10.1	OData Web Service Endpoint .....	26
10.2	OData Request Payload Format.....	27
10.3	OData Response Payload Format.....	27
10.4	Example Call.....	27
11	<b>ADD RELATED SOLUTION ELEMENTS TO A REQUIREMENT IN FOCUSED BUILD FROM AN EXTERNAL TOOL (FROM SUPPORT PACKAGE 9) .....</b>	<b>28</b>
11.1	OData Web Service Endpoint .....	28
11.2	OData Request Payload Format.....	29
11.3	OData Response Payload Format.....	29
11.4	Example Call.....	29
12	<b>CHANGE CUSTOMER FIELDS OF A REQUIREMENT IN FOCUSED BUILD FROM AN EXTERNAL TOOL (FROM SUPPORT PACKAGE 10).....</b>	<b>29</b>
12.1	OData Web Service Endpoint .....	29
12.2	OData Request Payload Format.....	30
12.3	Example Call.....	30
13	<b>CHANGE THE STATUS OF A REQUIREMENT IN FOCUSED BUILD FROM AN EXTERNAL TOOL .....</b>	<b>31</b>
13.1	OData Web Service Endpoint .....	31
13.2	OData Request Payload Format.....	31
13.3	OData Response Payload Format.....	31
13.4	Example Call.....	31
14	<b>CREATE A REQUIREMENT IN FOCUSED BUILD FROM AN EXTERNAL TOOL UP TO SP07 .....</b>	<b>32</b>
14.1	OData Web Service Endpoint .....	33
14.2	OData Payload Format.....	33
14.3	Payload Content Mapping.....	34
14.4	Payload Content Customizing.....	34
15	<b>COMMUNICATE STATUS UPDATE TO AN EXTERNAL TOOL .....</b>	<b>36</b>
15.1	Outbound Customizing.....	36
15.2	Connectivity to External Tool .....	37
15.3	OData Payload Format.....	38
15.4	Triggering Status Updates.....	38
15.5	External Requirement Tool OData Web Service Requirements.....	38

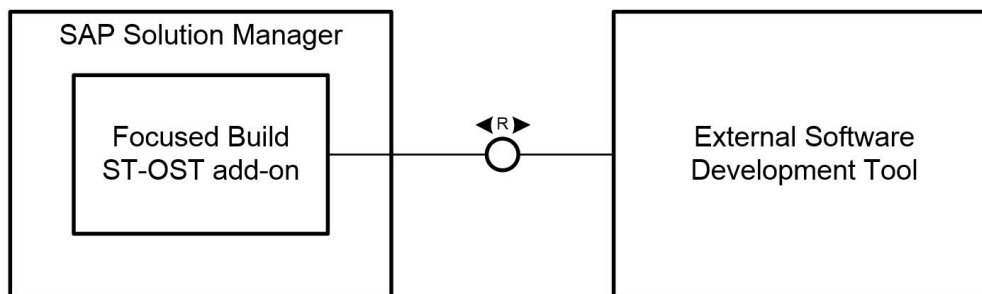
## 1 OVERVIEW

With Focused Build for SAP Solution Manager, SAP provides an external requirement API. This API enables you to connect an external requirement tool, for example Atlassian Jira, to SAP Solution Manager. To keep the API generic, the communication is based on OData web services.

The SAP Solution Manager side of the API is delivered as part of the ST-OST add-on from SP04 on, but the integration on the external tool side is not delivered by SAP due to the possible number of variations (combination of different tools with different versions/setup/Customizing).

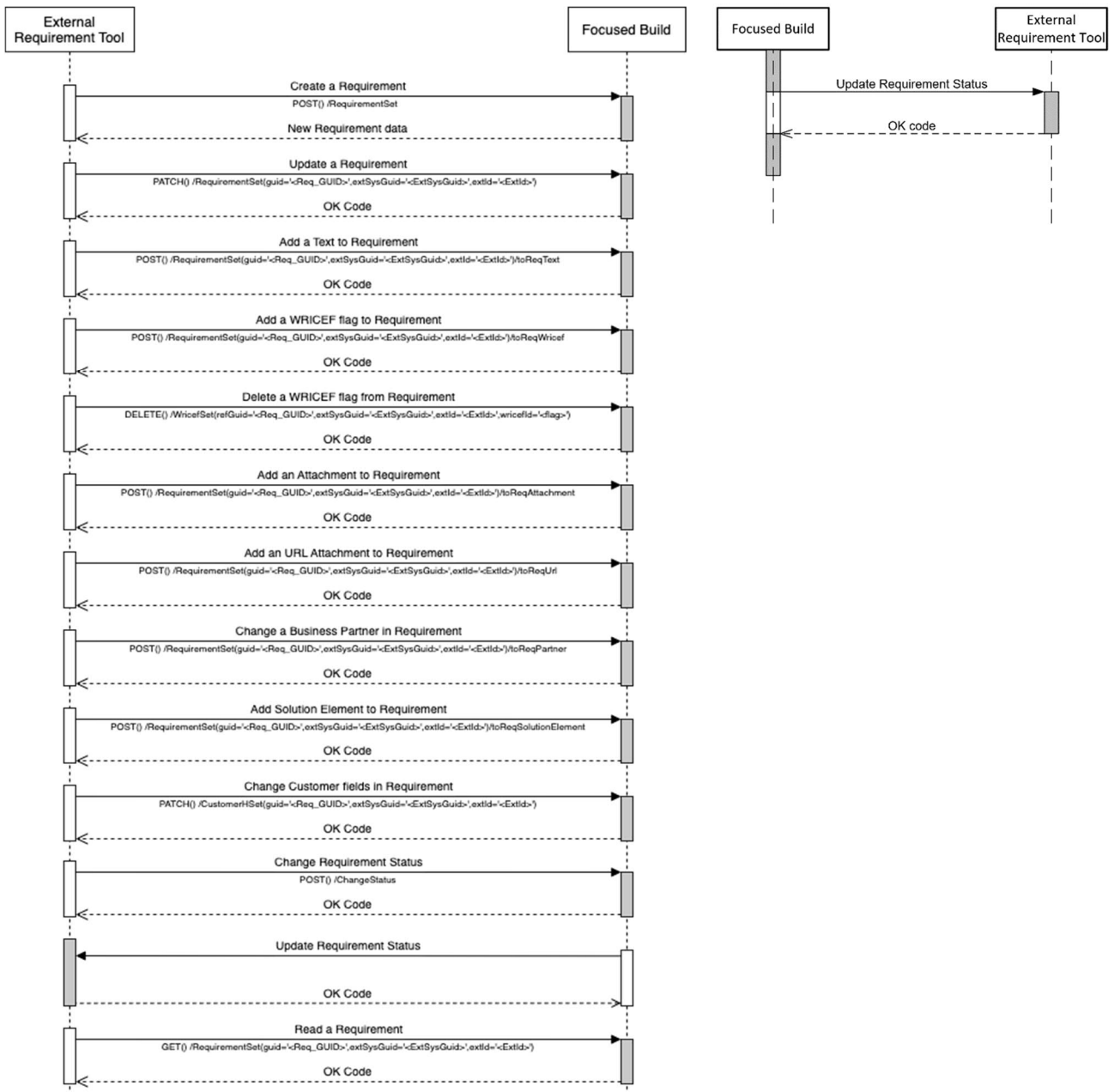
Starting from SP08 of Focused Build, this API has been extended to support further properties to be exchanged during the creation of a requirement. Additionally, new methods are provided to read, change, create attachments and perform status changes of a requirement in Focused Build from an external tool. The previous version of the API is not planned to be further enhanced.

This document describes the capabilities of the API and provides the necessary technical details to build an integration on the external tool side.



The API consists of two parts:

- The inbound channel, which is a web service called by the external requirement tool
- The outbound channel, which calls an OData web service of the external requirement tool in order to update the requirement status in the external tool



All methods of this API always require the exchange of an external system GUID and the external ID to the corresponding requirement in the external system as mandatory parameters. Thus, access to requirements that have not been created using this interface is not supported. The customizing activities to set up an external system GUID are described in section 14 of this document.

In Focused Build, the outbound channel is triggered automatically via Change Request Management framework actions. The action name is *SI\_UPD\_EXT*.

The Customizing is part of the Focused Build IMG.

## 2 TECHNICAL PREREQUISITES

Please make sure you have successfully executed the **Activating SALM\_FB Service** and **Defining System Aliases for OData Services** activities for the **External Integration API** application described in the Focused Build Configuration Guide.

The access to this API is secured by the Internet Communication Framework of the NetWeaver stack of the SAP Solution Manager server and requires a service user. A standard role `SAP_OST_FB_SYNC_REQ` is delivered as part of Focused Build. For more information about how to use the standard delivered authorization roles, see the Focused Build Security Guide.

Optionally, you can implement the enhancement spot `/SALM/EXT_R2D_INTEG` to allow complex mapping of fields when a requirement is created or changed using the API. The enhancement spot includes implementation example classes for reference.

## 3 READ A REQUIREMENT IN FOCUSED BUILD FROM AN EXTERNAL TOOL

The OData service `/SALM/EXT_R2D_INTEG` provides an *HTTP GET* method as part of the API to read the information of a requirement in Focused Build. The method allows the retrieval of the header information of a requirement and the associated information of texts, attachments, multilevel categorization, assigned business partners, WRICEF classification, URL attachments, and assigned Solution Documentation elements.

### 3.1 OData Web Service Endpoint

The OData Web service endpoint on the SAP Solution Manager side is:

```
https://<SolMan host>:<https port>/sap/opu/odata/SALM/EXT_R2D_INTEG_SRV/RequirementSet(guid=guid'<Requirement GUID>',extSysGuid='<External System GUID>',extId='<External Tool Requirement Id>')
```

**Supported HTTP Methods:** *GET*

**Mandatory URL Query Parameters:**

- **guid:** This parameter must contain the GUID of the requirement in Focused Build to access in the following format: 00000000-0000-0000-0000-000000000000.  
Example value: 42010AEE-CF75-1EEB-BCED-D000A0641F97
- **extSysGuid:** This parameter must contain the GUID of the external system as configured in the Customizing of Focused Build. For more details, see section 12.  
Example value: EXT\_SYSTEM\_01
- **extId:** This parameter must contain the ID value of the requirement in the external tool as informed during the creation of the requirement in Focused Build.  
Example value: MYBACKLOG-1

**Optional URL Request Parameters:**

- **\$expand:** This parameter indicates whether additional associated entities need to be included in the response. The value can be a list of the following possible values, separated by comma:
  - toReqPartner
  - toReqText
  - toReqWricef
  - toReqCategory
  - toReqAttachment

- toReqUrl
- toReqSolutionElement
- toReqCustomerH

### 3.2 OData Request Payload Format

Leave blank.

### 3.3 OData Response Payload Format

The generated payload provides the following properties in JSON format:

Property	Description
guid	GUID of the requirement
objectId	Object ID of the requirement
extSysGuid	External system GUID as defined in Customizing
extId	External requirement ID in the external tool
title	Title of the requirement
priority	Priority ID
priorityTxt	Priority text in service user logon language
status	User status ID
statusTxt	User status text in service user logon language
local	Local flag
valuePt	Value points
effortPt	Effort points
classification	Requirement classification ID
classificationTxt	Classification text in service user logon language
plannedProject	Planned project ID
url	Absolute URL for http access to the requirement in Focused Build user interface
relUrl <sup>(1)</sup>	Relative URL without host and port information for http access to the requirement in Focused Build user interface
<b>toReqPartner</b>	
toReqPartner/refGuid	GUID of the requirement of the associated entity
toReqPartner/partnerId	Business partner ID
toReqPartner/type	Business partner type partner profile
toReqPartner/fullName	Full name of the business partner
toReqPartner/userId	User ID in SAP Solution Manager system assigned to the business partner
toReqPartner/eMail	E-mail of the business partner
toReqPartner/lastName	Last name of the business partner
toReqPartner/firstName	First name of the business partner
<b>toReqText</b>	
toReqText/refGuid	GUID of the requirement of the associated entity
toReqText/textType	Text ID of the text entry
toReqText/changedAt	Timestamp of last modification of the text entry
toReqText/textContent	Text content of the text entry without format
toReqText/isRichText <sup>(2)</sup>	Boolean value that indicates that the text is formatted in rich text. If not provided, the default values is <i>false</i>
toReqText/textContentich <sup>(2)</sup>	Text content of the text entry in rich text, if field isRichText is <i>true</i>
<b>toReqWricef</b>	
toReqWricef/refGuid	GUID of the requirement of the associated entity
toReqWricef/wricefId	WRICEF flag code ID
toReqWricef/title	WRICEF title
<b>toReqCategory</b>	
toReqCategory/refGuid	GUID of the requirement of the associated entity
toReqCategory/catId	Multilevel categorization category ID
toReqCategory /guid	Multilevel categorization category GUID
toReqCategory /level	Multilevel categorization category hierarchy level
toReqCategory /title	Multilevel categorization category title in service user logon language
toReqCategory /parent	Multilevel categorization parent category GUID
<b>toReqAttachment</b>	
toReqAttachment/refGuid	GUID of the requirement of the associated entity
toReqAttachment /fileName	File name of the attachment
toReqAttachment /fileSize	Size in byte of the attachment
toReqAttachment /documentId	GUID of the attachment
toReqAttachment /url	Absolute URL of the attachment in the SAP Solution Manager content server
<b>toReqUrl</b>	
toReqUrl/refGuid <sup>(1)</sup>	GUID of the requirement of the associated entity

toReqUrl/urlId <sup>(1)</sup>	Internal attachment GUID
toReqUrl/url <sup>(1)</sup>	URL reference of the attachment
toReqUrl/description <sup>(1)</sup>	Attachment description
<hr/>	
toReqSolutionElement/refGuid <sup>(1)</sup>	GUID of the requirement of the associated entity
toReqSolutionElement/occId <sup>(1)</sup>	Occurrence ID of the Solution Element
toReqSolutionElement/typeId <sup>(1)</sup>	Element type technical ID
toReqSolutionElement/typeName <sup>(1)</sup>	Element type name
toReqSolutionElement/name <sup>(1)</sup>	Name of the Solution Element
toReqSolutionElement/solutionId <sup>(1)</sup>	Solution ID where the Element belongs to
toReqSolutionElement/branchId <sup>(1)</sup>	Branch ID where the Element belongs to
toReqSolutionElement/branchName <sup>(1)</sup>	Branch Name where the Element belongs to
<hr/>	
toReqCustomerH/<fieldname> <sup>(2)</sup>	Value for customer field. <fieldname> needs to match the technical field name as defined in customizing table /SALM/C_CUSTFLD. When several fields need to be populated, they can be added within the same block.

(1) Available from Support Package 9

(2) Available from Support Package 10

### 3.4 Example Call

The following example retrieves all information from a work item in one single call:

```
GET https://myfbhost.com:443/sap/opu/odata/SALM/EXT_R2D_INTEG_SRV/RequirementSet(guid=
guid'42010AEE-CF75-1EEB-BCED-D000A0641F97')?$expand=toReqPartner,toReqText,toReqWricef,toReqCategory,toReqAttachment,t
oReqUrl,toReqSolutionElement
```

#### Header request parameters:

- Accept: application/json

Request Body: <empty>

#### Example Response Body:

```
{
  "d": {
    "__metadata": {
      "id":
        "https://myfbhost.com:443/sap/opu/odata/SALM/EXT_R2D_INTEG_SRV/RequirementSet(guid=guid'42010AEE-
        CF75-1EEB-BCED-D000A0641F97',extSysGuid='EXT_SYSTEM_01',extId='MYBACKLOG-1')",
      "uri":
        "https://myfbhost.com:443/sap/opu/odata/SALM/EXT_R2D_INTEG_SRV/RequirementSet(guid=guid'42010AEE-
        CF75-1EEB-BCED-D000A0641F97',extSysGuid='EXT_SYSTEM_01',extId='MYBACKLOG-1')",
      "type": "SALM_EXT_R2D_INTEG_SRV.Requirement"
    },
    "guid": "42010AEE-CF75-1EEB-BCED-D000A0641F97",
    "objectId": "8000034900",
    "extSysGuid": "EXT_SYSTEM_01",
    "extId": "MYBACKLOG-1",
    "title": "My new Requirement",
    "priority": "2",
    "priorityTxt": "2: High",
    "status": "E0001",
    "statusTxt": "Draft",
    "local": ""
  }
}
```



```

"valuePt": 100,
"effortPt": 50,
"classification": "1",
"classificationTxt": "WRICEF",
"plannedProject": "MY_BUILD_PROJECT",
"url": "https://myfbhost.com:443/sap/bc/ui2/flp?sap-client=001&GUID=42010AEE-CF75-1EEB-BCED-D000A0641F97&sap-language=EN#Action-genericApp?configId=1&/configId/1/workspace/42010AEE-CF75-1EEB-BCED-D000A0641F97",
"toReqWricef": {
  "results": [
    {
      "__metadata": {
        "id":
"https://myfbhost.com:443/sap/opu/odata/SALM/EXT_R2D_INTEG_SRV/WricefSet(extSysGuid='EXT_SYSTEM_01',
extId='MYBACKLOG-1',refGuid=guid'42010AEE-CF75-1EEB-BCED-D000A0641F97',wricefId='W')",
        "uri":
"https://myfbhost.com:443/sap/opu/odata/SALM/EXT_R2D_INTEG_SRV/WricefSet(extSysGuid='EXT_SYSTEM_01',
extId='MYBACKLOG-1',refGuid=guid'42010AEE-CF75-1EEB-BCED-D000A0641F97',wricefId='W')",
        "type": "SALM_EXT_R2D_INTEG_SRV.Wricef"
      },
      "extSysGuid": "EXT_SYSTEM_01",
      "extId": "MYBACKLOG-1",
      "refGuid": "42010AEE-CF75-1EEB-BCED-D000A0641F97",
      "wricefId": "W",
      "title": "Workflow"
    },
    {
      "__metadata": {
        "id":
"https://myfbhost.com:443/sap/opu/odata/SALM/EXT_R2D_INTEG_SRV/WricefSet(extSysGuid='EXT_SYSTEM_01',
extId='MYBACKLOG-1',refGuid=guid'42010AEE-CF75-1EEB-BCED-D000A0641F97',wricefId='I')",
        "uri":
"https://myfbhost.com:443/sap/opu/odata/SALM/EXT_R2D_INTEG_SRV/WricefSet(extSysGuid='EXT_SYSTEM_01',
extId='MYBACKLOG-1',refGuid=guid'42010AEE-CF75-1EEB-BCED-D000A0641F97',wricefId='I')",
        "type": "SALM_EXT_R2D_INTEG_SRV.Wricef"
      },
      "extSysGuid": "EXT_SYSTEM_01",
      "extId": "MYBACKLOG-1",
      "refGuid": "42010AEE-CF75-1EEB-BCED-D000A0641F97",
      "wricefId": "I",
      "title": "Interface"
    },
    {
      "__metadata": {
        "id":
"https://myfbhost.com:443/sap/opu/odata/SALM/EXT_R2D_INTEG_SRV/WricefSet(extSysGuid='EXT_SYSTEM_01',
extId='MYBACKLOG-1',refGuid=guid'42010AEE-CF75-1EEB-BCED-D000A0641F97',wricefId='C')",
        "uri":
"https://myfbhost.com:443/sap/opu/odata/SALM/EXT_R2D_INTEG_SRV/WricefSet(extSysGuid='EXT_SYSTEM_01',
extId='MYBACKLOG-1',refGuid=guid'42010AEE-CF75-1EEB-BCED-D000A0641F97',wricefId='C')",
        "type": "SALM_EXT_R2D_INTEG_SRV.Wricef"
      },

```

```

        "extSysGuid": "EXT_SYSTEM_01",
        "extId": "MYBACKLOG-1",
        "refGuid": "42010AEE-CF75-1EEB-BCED-D000A0641F97",
        "wricefId": "C",
        "title": "Conversion"
    },
    {
        "__metadata": {
            "id":
"https://myfbhost.com:443/sap/opu/odata/SALM/EXT_R2D_INTEG_SRV/WricefSet(extSysGuid='EXT_SYSTEM_01',
extId='MYBACKLOG-1',refGuid=guid'42010AEE-CF75-1EEB-BCED-D000A0641F97',wricefId='E')",
            "uri":
"https://myfbhost.com:443/sap/opu/odata/SALM/EXT_R2D_INTEG_SRV/WricefSet(extSysGuid='EXT_SYSTEM_01',
extId='MYBACKLOG-1',refGuid=guid'42010AEE-CF75-1EEB-BCED-D000A0641F97',wricefId='E')",
            "type": "SALM_EXT_R2D_INTEG_SRV.Wricef"
        },
        "extSysGuid": "EXT_SYSTEM_01",
        "extId": "MYBACKLOG-1",
        "refGuid": "42010AEE-CF75-1EEB-BCED-D000A0641F97",
        "wricefId": "E",
        "title": "Enhancement"
    },
    {
        "__metadata": {
            "id":
"https://myfbhost.com:443/sap/opu/odata/SALM/EXT_R2D_INTEG_SRV/WricefSet(extSysGuid='EXT_SYSTEM_01',
extId='MYBACKLOG-1',refGuid=guid'42010AEE-CF75-1EEB-BCED-D000A0641F97',wricefId='O')",
            "uri":
"https://myfbhost.com:443/sap/opu/odata/SALM/EXT_R2D_INTEG_SRV/WricefSet(extSysGuid='EXT_SYSTEM_01',
extId='MYBACKLOG-1',refGuid=guid'42010AEE-CF75-1EEB-BCED-D000A0641F97',wricefId='O')",
            "type": "SALM_EXT_R2D_INTEG_SRV.Wricef"
        },
        "extSysGuid": "EXT_SYSTEM_01",
        "extId": "MYBACKLOG-1",
        "refGuid": "42010AEE-CF75-1EEB-BCED-D000A0641F97",
        "wricefId": "O",
        "title": "Form"
    }
}
]
},
"toReqPartner": {
    "results": [
        {
            "__metadata": {
                "id":
"https://myfbhost.com:443/sap/opu/odata/SALM/EXT_R2D_INTEG_SRV/PartnerSet(extSysGuid='EXT_SYSTEM_01',
,extId='MYBACKLOG-1',partnerId='0500001930',refGuid=guid'42010AEE-CF75-1EEB-BCED-D000A0641F97')",
                "uri":
"https://myfbhost.com:443/sap/opu/odata/SALM/EXT_R2D_INTEG_SRV/PartnerSet(extSysGuid='EXT_SYSTEM_01',
,extId='MYBACKLOG-1',partnerId='0500001930',refGuid=guid'42010AEE-CF75-1EEB-BCED-D000A0641F97')",
                "type": "SALM_EXT_R2D_INTEG_SRV.Partner"
            },

```

```

        "extSysGuid": "EXT_SYSTEM_01",
        "extId": "MYBACKLOG-1",
        "partnerId": "0500001930",
        "type": "/SALM/01",
        "refGuid": "42010AEE-CF75-1EEB-BCED-D000A0641F97",
        "fullName": "John Doe",
        "userId": "JOHNDOE",
        "eMail": "john.doe@mail.com",
        "lastName": "Doe",
        "firstName": "John"
    },
    {
        "__metadata": {
            "id":
"https://myfbhost.com:443/sap/opu/odata/SALM/EXT_R2D_INTEG_SRV/PartnerSet(extSysGuid='EXT_SYSTEM_01',extId='MYBACKLOG-1',partnerId='0000003995',refGuid=guid'42010AEE-CF75-1EEB-BCED-D000A0641F97')",
            "uri":
"https://myfbhost.com:443/sap/opu/odata/SALM/EXT_R2D_INTEG_SRV/PartnerSet(extSysGuid='EXT_SYSTEM_01',extId='MYBACKLOG-1',partnerId='0000003995',refGuid=guid'42010AEE-CF75-1EEB-BCED-D000A0641F97')",
            "type": "SALM_EXT_R2D_INTEG_SRV.Partner"
        },
        "extSysGuid": "EXT_SYSTEM_01",
        "extId": "MYBACKLOG-1",
        "partnerId": "0000003995",
        "type": "/SALM/10",
        "refGuid": "42010AEE-CF75-1EEB-BCED-D000A0641F97",
        "fullName": "Jane Doe",
        "userId": "JANEDOE",
        "eMail": "jane.doe@mail.com",
        "lastName": "Doe",
        "firstName": "Jane"
    }
]
},
"toReqCategory": {
    "results": [
        {
            "__metadata": {
                "id":
"https://myfbhost.com:443/sap/opu/odata/SALM/EXT_R2D_INTEG_SRV/CategorySet(extSysGuid='EXT_SYSTEM_01',extId='MYBACKLOG-1',guid='5CF3FCDCEC001EDB88E6B8A3BDA47A8B',refGuid=guid'42010AEE-CF75-1EEB-BCED-D000A0641F97')",
                "uri":
"https://myfbhost.com:443/sap/opu/odata/SALM/EXT_R2D_INTEG_SRV/CategorySet(extSysGuid='EXT_SYSTEM_01',extId='MYBACKLOG-1',guid='5CF3FCDCEC001EDB88E6B8A3BDA47A8B',refGuid=guid'42010AEE-CF75-1EEB-BCED-D000A0641F97')",
                "type": "SALM_EXT_R2D_INTEG_SRV.Category"
            },
            "extSysGuid": "EXT_SYSTEM_01",
            "extId": "MYBACKLOG-1",
            "catId": "CAT1_CAT01",
            "guid": "5CF3FCDCEC001EDB88E6B8A3BDA47A8B",

```

```

        "level": 1,
        "title": "Applications",
        "parent": "5CF3FCDCEC001EDB88E6B8A3BDA43A8B",
        "refGuid": "42010AEE-CF75-1EEB-BCED-D000A0641F97"
    },
    {
        "__metadata": {
            "id":
"https://myfbhost.com:443/sap/opu/odata/SALM/EXT_R2D_INTEG_SRV/CategorySet(extSysGuid='EXT_SYSTEM_01',extId='MYBACKLOG-1',guid='5CF3FCDCEC001EDB88E6B8A3BDA65A8B',refGuid=guid'42010AEE-CF75-1EEB-BCED-D000A0641F97')",
            "uri":
"https://myfbhost.com:443/sap/opu/odata/SALM/EXT_R2D_INTEG_SRV/CategorySet(extSysGuid='EXT_SYSTEM_01',extId='MYBACKLOG-1',guid='5CF3FCDCEC001EDB88E6B8A3BDA65A8B',refGuid=guid'42010AEE-CF75-1EEB-BCED-D000A0641F97')",
            "type": "SALM_EXT_R2D_INTEG_SRV.Category"
        },
        "extSysGuid": "EXT_SYSTEM_01",
        "extId": "MYBACKLOG-1",
        "catId": "CAT1_CAT01_02",
        "guid": "5CF3FCDCEC001EDB88E6B8A3BDA65A8B",
        "level": 2,
        "title": "Non-Functional",
        "parent": "5CF3FCDCEC001EDB88E6B8A3BDA47A8B",
        "refGuid": "42010AEE-CF75-1EEB-BCED-D000A0641F97"
    },
    {
        "__metadata": {
            "id":
"https://myfbhost.com:443/sap/opu/odata/SALM/EXT_R2D_INTEG_SRV/CategorySet(extSysGuid='EXT_SYSTEM_01',extId='MYBACKLOG-1',guid='5CF3FCDCEC001EDB88E6B8A3BDA67A8B',refGuid=guid'42010AEE-CF75-1EEB-BCED-D000A0641F97')",
            "uri":
"https://myfbhost.com:443/sap/opu/odata/SALM/EXT_R2D_INTEG_SRV/CategorySet(extSysGuid='EXT_SYSTEM_01',extId='MYBACKLOG-1',guid='5CF3FCDCEC001EDB88E6B8A3BDA67A8B',refGuid=guid'42010AEE-CF75-1EEB-BCED-D000A0641F97')",
            "type": "SALM_EXT_R2D_INTEG_SRV.Category"
        },
        "extSysGuid": "EXT_SYSTEM_01",
        "extId": "MYBACKLOG-1",
        "catId": "CAT1_CAT01_02_01",
        "guid": "5CF3FCDCEC001EDB88E6B8A3BDA67A8B",
        "level": 3,
        "title": "Performance",
        "parent": "5CF3FCDCEC001EDB88E6B8A3BDA65A8B",
        "refGuid": "42010AEE-CF75-1EEB-BCED-D000A0641F97"
    }
}
]
},
"toReqText": {
    "results": [
        {

```

```

    "__metadata": {
      "id":
"https://myfbhost.com:443/sap/opu/odata/SALM/EXT_R2D_INTEG_SRV/TextSet(refGuid=guid'42010AEE-CF75-1EEB-BCED-D000A0641F97',extSysGuid='EXT_SYSTEM_01',extId='MYBACKLOG-1')",
      "uri":
"https://myfbhost.com:443/sap/opu/odata/SALM/EXT_R2D_INTEG_SRV/TextSet(refGuid=guid'42010AEE-CF75-1EEB-BCED-D000A0641F97',extSysGuid='EXT_SYSTEM_01',extId='MYBACKLOG-1')",
      "type": "SALM_EXT_R2D_INTEG_SRV.Text"
    },
    "refGuid": "42010AEE-CF75-1EEB-BCED-D000A0641F97",
    "extSysGuid": "EXT_SYSTEM_01",
    "extId": "MYBACKLOG-1",
    "textType": "S004",
    "changedAt": "/Date(1627801349000)/",
    "textContent": "This is the solution text"
  },
  {
    "__metadata": {
      "id":
"https://myfbhost.com:443/sap/opu/odata/SALM/EXT_R2D_INTEG_SRV/TextSet(refGuid=guid'42010AEE-CF75-1EEB-BCED-D000A0641F97',extSysGuid='EXT_SYSTEM_01',extId='MYBACKLOG-1')",
      "uri":
"https://myfbhost.com:443/sap/opu/odata/SALM/EXT_R2D_INTEG_SRV/TextSet(refGuid=guid'42010AEE-CF75-1EEB-BCED-D000A0641F97',extSysGuid='EXT_SYSTEM_01',extId='MYBACKLOG-1')",
      "type": "SALM_EXT_R2D_INTEG_SRV.Text"
    },
    "refGuid": "42010AEE-CF75-1EEB-BCED-D000A0641F97",
    "extSysGuid": "EXT_SYSTEM_01",
    "extId": "MYBACKLOG-1",
    "textType": "S126",
    "changedAt": "/Date(1627801349000)/",
    "isRichText": false,
    "textContent": "This is the assumption text"
  },
  {
    "__metadata": {
      "id":
"https://myfbhost.com:443/sap/opu/odata/SALM/EXT_R2D_INTEG_SRV/TextSet(refGuid=guid'42010AEE-CF75-1EEB-BCED-D000A0641F97',extSysGuid='EXT_SYSTEM_01',extId='MYBACKLOG-1')",
      "uri":
"https://myfbhost.com:443/sap/opu/odata/SALM/EXT_R2D_INTEG_SRV/TextSet(refGuid=guid'42010AEE-CF75-1EEB-BCED-D000A0641F97',extSysGuid='EXT_SYSTEM_01',extId='MYBACKLOG-1')",
      "type": "SALM_EXT_R2D_INTEG_SRV.Text"
    },
    "refGuid": "42010AEE-CF75-1EEB-BCED-D000A0641F97",
    "extSysGuid": "EXT_SYSTEM_01",
    "extId": "MYBACKLOG-1",
    "textType": "S115",
    "changedAt": "/Date(1627801349000)/",
    "isRichText": true,
    "textContentRich": "<p style=\"text-align: left;\">New Description Text with
format.</p>"
  }

```

```

    }
  ]
},
"toReqAttachment": {
  "results": [
    {
      "__metadata": {
        "id":
"https://myfbhost.com:443/sap/opu/odata/SALM/EXT_R2D_INTEG_SRV/AttachmentSet(extSysGuid='EXT_SYSTEM_01',extId='MYBACKLOG-1',refGuid=guid'42010AEE-CF75-1EEB-BCED-D000A0641F97',documentId='42010AEECF751EEBBCEE164483257F97')",
        "uri":
"myfbhost.com:443/sap/opu/odata/SALM/EXT_R2D_INTEG_SRV/AttachmentSet(extSysGuid='EXT_SYSTEM_01',extId='MYBACKLOG-1',refGuid=guid'42010AEE-CF75-1EEB-BCED-D000A0641F97',documentId='42010AEECF751EEBBCEE164483257F97')",
        "type": "SALM_EXT_R2D_INTEG_SRV.Attachment",
        "content_type": "SAC API Enhancements Details.docx",
        "media_src":
"https://myfbhost.com:443/sap/opu/odata/SALM/EXT_R2D_INTEG_SRV/AttachmentSet(extSysGuid='EXT_SYSTEM_01',extId='MYBACKLOG-1',refGuid=guid'42010AEE-CF75-1EEB-BCED-D000A0641F97',documentId='42010AEECF751EEBBCEE164483257F97')/$value"
      },
      "extSysGuid": "EXT_SYSTEM_01",
      "extId": "MYBACKLOG-1",
      "refGuid": "42010AEE-CF75-1EEB-BCED-D000A0641F97",
      "fileName": "SAC API Enhancements Details.docx",
      "fileSize": "85576",
      "documentId": "42010AEECF751EEBBCEE164483257F97",
      "document": "",
      "url":
"http://myfbhost.com:443/sap/bc/contentserver/001?get&pVersion=0046&contRep=CRMORDER&docId=42010AEECF751EEBBCEE164483257F97&compId=SAC%20API%20Enhancements%20Details.docx&accessMode=r&authId=X&expiration=20200802110500&secKey=CfCbDESgTKSVasgDEbnWNKSQPOnngfHJNf",
      "relUrl":
"/sap/bc/contentserver/001?get&pVersion=0046&contRep=CRMORDER&docId=42010AEECF751EEBBCEE164483257F97&compId=SAC%20API%20Enhancements%20Details.docx&accessMode=r&authId=X&expiration=20200802110500&secKey=CfCbDESgTKSVasgDEbnWNKSQPOnngfHJNf"
    }
  ]
},
"toReqSolutionElement": {
  "results": [
    {
      "__metadata": {
        "id":
"http://myfbhost.com:443/sap/opu/odata/SALM/EXT_R2D_INTEG_SRV/SolutionElementSet(occId='4W0WwZb37jczcFJjswPVnG',refGUID=guid'42010AEE-CF75-1EEB-BCED-D000A0641F97',extSysGuid='EXT_SYSTEM_01',extId='MYBACKLOG-1')",
        "uri":
"http://myfbhost.com:443/sap/opu/odata/SALM/EXT_R2D_INTEG_SRV/SolutionElementSet(occId='4W0WwZb37jczcFJjswPVnG',refGUID=guid'42010AEE-CF75-1EEB-BCED-D000A0641F97',extSysGuid='EXT_SYSTEM_01',extId='MYBACKLOG-1')",
        "type": "SALM_EXT_R2D_INTEG_SRV.SolutionElement"
      }
    }
  ]
}

```

```

    },
    "occId": "4W0WwZb37jczcFJjswPVnG",
    "typeId": "REF_PROCSTEP",
    "typeName": "Process Step <Ref.>",
    "name": "Create Sales Order",
    "refGUID": "42010AEE-CF75-1EEB-BCED-D000A0641F97",
    "extSysGuid": "EXT_SYSTEM_01",
    "extId": "MYBACKLOG-1",
    "solutionId": "GW4Axizr7koBXitYTzr}bm",
    "solutionName": "My Solution",
    "branchId": "GW4Axizr7koBYE6u0y8}bm",
    "branchName": "Design"
  }
]
},
"toReqUrl": {
  "results": [
    {
      "__metadata": {
        "id":
"http://myfbhost.com:443/sap/opu/odata/SALM/EXT_R2D_INTEG_SRV/UrlSet(extSysGuid='EXT_SYSTEM_01',extI
d='MYBACKLOG-1',refGuid=guid'42010AEE-CF75-1EEB-BCED-
D000A0641F97',urlId='42010AEECF751EEC8E95C1F8336E1F98')",
        "uri":
"http://myfbhost.com:443/sap/opu/odata/SALM/EXT_R2D_INTEG_SRV/UrlSet(extSysGuid='EXT_SYSTEM_01',extI
d='MYBACKLOG-1',refGuid=guid'42010AEE-CF75-1EEB-BCED-
D000A0641F97',urlId='42010AEECF751EEC8E95C1F8336E1F98')",
        "type": "SALM_EXT_R2D_INTEG_SRV.Url"
      },
      "extSysGuid": "EXT_SYSTEM_01",
      "extId": "MYBACKLOG-1",
      "refGuid": "42010AEE-CF75-1EEB-BCED-D000A0641F97",
      "urlId": "42010AEECF751EEC8E95C1F8336E1F98",
      "url": "https://help.sap.com/doc/1b9de204416c4a70bec88e6f1cbe3c9b/",
      "description": "Technical Guide"
    }
  ]
},
"toReqCustomerH": {
  "zzaflD000001": "/Date(1665446400000)/",
  "zzaflD000002": "My field value"
}
}
}

```

## 4 CREATE A REQUIREMENT IN FOCUSED BUILD FROM AN EXTERNAL TOOL

The OData service /SALM/EXT\_R2D\_INTEG provides an HTTP POST method as part of the API to create a new requirement.

### 4.1 OData Web Service Endpoint

The OData Web service endpoint on the SAP Solution Manager side is:

**https://<SolMan host>:<https port>/sap/opu/odata/SALM/EXT\_R2D\_INTEG\_SRV/RequirementSet**

**Supported HTTP Methods:** POST

**Mandatory HTTP Header Request Parameters:**

- **Content-Type:** This parameter indicates which content type the body is formatted as, expressed as MIME types. This parameter is only required when sending a POST method.  
Required value: *application/json*

**Optional HTTP Header Request Parameters:**

- **Accept:** This parameter indicates which content types, expressed as MIME types, the client is able to understand. The default value is *application/atom+xml*.  
Example value: *application/json*

## 4.2 OData Request Payload Format

When sending a POST call, the following JSON format body is required:

```
{
  "extSysGuid": "External System GUID as defined in customizing",
  "extId": "External Requirement ID in the external tool",
  "title": "Title of the new Requirement",
  "priority": "Priority ID",
  "local": "Local flag",
  "valuePt": "Value points number",
  "effortPt": "Effort points number",
  "classification": "Requirement Classification ID",
  "plannedProject": "Planned Project ID",
  "toReqWricef": [
    {
      "wricefId": "WRICEF flag code ID to selected"
    }
  ],
  "toReqPartner": [
    {
      "partnerId": "Business Partner ID",
      "type": "Business Partner type Partner profile"
    }
  ],
  "toReqCategory": [
    {
      "catId": "Multilevel categorization category ID. The final leaf value is expected"
    }
  ],
  "toReqText": [
    {
      "textType": "Text type ID for which the new text should be created according to the supported text types in the customizing",

```



```

        "textContent": " Text to be saved for the specified text ID, unformatted "
    }
],
"toReqCustomerH": {
    "zzaflld000001": "/Date(1665446400000)/",
    "zzaflld000002": "My field value"
}
}
}

```

### 4.3 OData Response Payload Format

When successful, the method returns the complete information of the newly created requirement. See section 3.3 for properties.

### 4.4 Example Call

The following example creates a new requirement in Focused Build:

POST [https://myfbhost.com:443/sap/opu/odata/SALM/EXT\\_R2D\\_INTEG\\_SRV/RequirementSet](https://myfbhost.com:443/sap/opu/odata/SALM/EXT_R2D_INTEG_SRV/RequirementSet)

#### Header request parameters:

- Content-Type: application/json

#### Request Body:

```

{
    "extSysGuid": "EXT_SYSTEM_01",
    "extId": "MYBACKLOG-1",
    "title": "My new Requirement",
    "priority": "2",
    "local": "X",
    "valuePt": 100,
    "effortPt": 50,
    "classification": "1",
    "plannedProject": "MY_BUILD_PROJECT",
    "toReqWricef": [
        {
            "wricefId": "E"
        },
        {
            "wricefId": "I"
        }
    ],
    "toReqPartner": [
        {
            "partnerId": "0000001955",
            "type": "/SALM/01"
        },
        {
            "partnerId": "0000991811",
            "type": "HT000012"
        }
    ]
}

```

```

],
"toReqCategory": [
  {
    "catId": "CAT1_CAT01_02_01"
  }
],
"toReqText": [
  {
    "textType": "S115",
    "isRichText": true,
    "textContent": "<p style=\"text-align: left;\">New Description Text with format.</p>"
  },
  {
    "textType": "S126",
    "textContent": "This is the assumption text"
  },
  {
    "textType": "S004",
    "textContent": "This is the solution text"
  }
],
"toReqCustomerH": {
  "zzaflD000001": "/Date(1665446400000)/",
  "zzaflD000002": "My field value"
}
}

```

The required HTTP response status code is 201 (Created).

## 5 CHANGE THE HEADER ATTRIBUTES OF A REQUIREMENT IN FOCUSED BUILD FROM AN EXTERNAL TOOL

The OData service `/SALM/EXT_R2D_INTEG` provides `HTTP PUT` and `PATCH` methods as part of the API to change the header properties of a requirement.

### 5.1 OData Web Service Endpoint

The OData web service endpoint on the SAP Solution Manager side is:

**`https://<SolMan host>:<https port>/sap/opu/odata/SALM/EXT_R2D_INTEG_SRV/RequirementSet(guid=guid'<Requirement GUID>',extSysGuid='<External System GUID>',extId='<External Tool Requirement Id>')`**

**Supported HTTP Methods:** `PUT`, `PATCH`

**Mandatory HTTP Header Request Parameters:**

- **Content-Type:** This parameter indicates which content type the body is formatted as, expressed as MIME types.  
Required value: `application/json`

## 5.2 OData Request Payload Format

When sending a *PUT* call, all attributes of the header entity must be provided. If there are properties missing, they are deleted. If you only have to change a few properties, use a *PATCH* method call instead.

```
{
  "title": "Title of the new Requirement",
  "priority": "Priority ID",
  "local": "Local flag",
  "valuePt": "Value points number",
  "effortPt": "Effort points number",
  "classification": "Requirement Classification ID",
  "plannedProject": "Planned Project ID",
}
```

## 5.3 Example Call

The following example only changes the priority, value points, and local flag attributes in a requirement in Focused Build:

```
PATCH https://myfbhost.com:443/sap/opu/odata/SALM/
EXT_R2D_INTEG_SRV/RequirementSet(guid=guid'42010AEE-CF75-1EEB-BCED-D000A0641F97',
extSysGuid='EXT_SYSTEM_01',extId='MYBACKLOG-1')
```

Header request parameters:

- Content-Type: application/json

Request Body:

```
{
  "priority": "1",
  "local": " ",
  "valuePt": 50
}
```

The required HTTP response status code is 204 (No Content).

## 6 POST A NEW TEXT TO A REQUIREMENT IN FOCUSED BUILD FROM AN EXTERNAL TOOL

The OData service `/SALM/EXT_R2D_INTEG` provides an *HTTP POST* method as part of the API to create new texts in a requirement. The text is created unformatted.

### 6.1 OData Web Service Endpoint

The OData web service endpoint on the SAP Solution Manager side is:

```
https://<SolMan host>:<https
port>/sap/opu/odata/SALM/EXT_R2D_INTEG_SRV/RequirementSet(guid=guid'<Requirement
GUID>',extSysGuid='<External System GUID>',extId='<External Tool Requirement
Id>')/toReqText
```

## Supported HTTP Methods: *GET*, *POST*

### Mandatory URL Query Parameters:

- **guid:** This parameter must contain the GUID of the requirement in Focused Build to access in the following format: 00000000-0000-0000-0000-000000000000.  
Example value: 42010AEE-CF75-1EEB-BCED-D000A0641F97
- **extSysGuid:** This parameter must contain the GUID of the external system as configured in the Customizing of Focused Build. For more details, see section 12.  
Example value: EXT\_SYSTEM\_01
- **extId:** This parameter must contain the ID value of the requirement in the external tool as informed during the creation of the requirement in Focused Build.  
Example value: MYBACKLOG-1

### Mandatory HTTP Header Request Parameters:

- **Content-Type:** This parameter indicates which content type the body is formatted as, expressed as MIME types. This parameter is only required when sending a *POST* method.  
Required value: *application/json*

### Optional HTTP Header Request Parameters:

- **Accept:** This parameter indicates which content types, expressed as MIME types, the client is able to understand. The default value is *application/atom+xml*.  
Example value: *application/json*

## 6.2 OData Request Payload Format

For a *GET* method call, leave the body part blank.

When sending a *POST* call, the following JSON format body is required:

```
{
  "textType": "Text type ID for which the new text should be created according to the supported
text types in the customizing",
  "textContent": "Text to be saved for the specified text ID, unformatted"
}
```

If the text needs to be created with format, when sending a *POST* call, the following JSON format body is required:

```
{
  "textType": "Text type ID for which the new text should be created according to the supported
text types in the customizing",
  "isRichText": true,
  "textContentRich": "Text to be saved for the specified text ID, with format"
}
```

The creation of texts with format is only possible if the requested text type in property *textType* supports rich text.

## 6.3 OData Response Payload Format

For a *GET* method call, see section 3.3 for properties of the associated entity **toReqText**.

## 6.4 Example Call

The following example creates a new text of type S115 (Comment) in the requirement:

```
POST https://myfbhost.com:443/sap/opu/odata/SALM/EXT_R2D_INTEG_SRV/RequirementSet(guid=guid'42010AEE-CF75-1EEB-BCED-D000A0641F97', extSysGuid='EXT_SYSTEM_01', extId='MYBACKLOG-1')/toReqText
```

Header request parameters:

- Content-Type: application/json

Request Body:

```
{
  "textType": "S115",
  "isRichText": true,
  "textContentRich": "<p style=\"text-align: left;\">New Description Text with format.</p>"
}
```

The required HTTP response status code is 201 (Created).

## 7 CHANGE THE WRICEF ATTRIBUTES OF A REQUIREMENT IN FOCUSED BUILD FROM AN EXTERNAL TOOL

The OData service */SALM/EXT\_R2D\_INTEG* provides an *HTTP POST* method as part of the API to add or remove the **WRICEF** attribute flags of a requirement.

### 7.1 OData Web Service Endpoint for Creation

The OData web service endpoint on the SAP Solution Manager side is:

**https://<SolMan host>:<https port>/sap/opu/odata/SALM/EXT\_R2D\_INTEG\_SRV/RequirementSet(guid=guid'<Requirement GUID>', extSysGuid='<External System GUID>', extId='<External Tool Requirement Id>')/toReqWricef**

**Supported HTTP Methods:** *POST*

**Mandatory URL Query Parameters:**

- **guid:** This parameter must contain the GUID of the requirement in Focused Build to access in the following format: 00000000-0000-0000-0000-000000000000.  
Example value: 42010AEE-CF75-1EEB-BCED-D000A0641F97
- **extSysGuid:** This parameter must contain the GUID of the external system as configured in the Customizing of Focused Build. For more details, see section 12.  
Example value: EXT\_SYSTEM\_01
- **extId:** This parameter must contain the ID value of the requirement in the external tool as informed during the creation of the requirement in Focused Build.  
Example value: MYBACKLOG-1

## Mandatory HTTP Header Request Parameters:

- **Content-Type:** This parameter indicates which content type the body is formatted as, expressed as MIME types.  
Required value: *application/json*

### 7.1.1 OData Request Payload Format for Creation

The following JSON format body is required:

```
{  
  "wricefId": "WRICEF Flag code to be added"  
}
```

Possible values for WRICEF code are:

- W: Workflow
- R: Report
- I: Interface
- C: Conversion
- E: Enhancement
- F: Form

### 7.1.2 Example Call for Creation

The following example adds the WRICEF flag **Conversion** to a requirement:

```
POST https://myfbhost.com:443/sap/opu/odata/SALM/  
EXT_R2D_INTEG_SRV/RequirementSet(guid=guid'42010AEE-CF75-1EEB-BCED-D000A0641F97',  
extSysGuid='EXT_SYSTEM_01',extId='MYBACKLOG-1')/toReqWricef
```

Header request parameters:

- Content-Type: application/json

Request Body:

```
{  
  "wricefId": "C"  
}
```

The required HTTP response status code is 201 (Created).

## 7.2 OData Web Service Endpoint for Deletion

The OData web service endpoint on the SAP Solution Manager side is:

**https://<SolMan host>:<https port>/sap/opu/odata/SALM/EXT\_R2D\_INTEG\_SRV/WricefSet(refGuid=guid'<Requirement GUID>',extSysGuid='<External System GUID>',extId='<External Tool Requirement Id>',wricefId='<WRICEF flag code>')**

**Supported HTTP Methods:** *DELETE*

## Mandatory URL Query Parameters:

- **refGuid:** This parameter must contain the GUID of the requirement in Focused Build to access in the following format: 00000000-0000-0000-0000-000000000000.  
Example value: 42010AEE-CF75-1EEB-BCED-D000A0641F97
- **extSysGuid:** This parameter must contain the GUID of the external system as configured in the Customizing of Focused Build. For more details, see section 12.  
Example value: EXT\_SYSTEM\_01
- **extId:** This parameter must contain the ID value of the requirement in the external tool as informed during the creation of the requirement in Focused Build.  
Example value: MYBACKLOG-1
- **wricefId:** This parameter indicates the WRICEF flag code to be deleted.  
Example value: C

Possible values for WRICEF code: See section 7.1.1

### 7.2.1 OData Request Payload Format for Deletion

Leave the body part blank.

### 7.2.2 Example Call for Deletion

The following example deletes the WRICEF flag **Report** from a requirement:

```
DELETE https://myfbhost.com:443/sap/opu/odata/SALM/  
EXT_R2D_INTEG_SRV/WricefSet(refGuid=guid'42010AEE-CF75-1EEB-BCED-D000A0641F97',  
extSysGuid='EXT_SYSTEM_01',extId='MYBACKLOG-1',wricefId='R')
```

Header request parameters: none

Request Body: <empty>

The required HTTP response status code is 204 (No Content).

## 8 SEND AN ATTACHMENT TO A REQUIREMENT IN FOCUSED BUILD FROM AN EXTERNAL TOOL

The OData service `/SALM/EXT_R2D_INTEG` provides an *HTTP POST* method as part of the API to send and store files as attachments into a requirement.

### 8.1 OData Web Service Endpoint

The OData web service endpoint on the SAP Solution Manager side is:

```
https://<SolMan host>:<https port>/sap/opu/odata/SALM/  
EXT_R2D_INTEG_SRV/RequirementSet(guid=guid'<Requirement  
GUID>',extSysGuid='<External System GUID>',extId='<External Tool Requirement  
Id>')/toReqAttachment
```

**Supported HTTP Methods:** *GET, POST*

**Mandatory URL Query Parameters:**

- **guid:** This parameter must contain the GUID of the work item to access in the following format: 00000000-0000-0000-0000-000000000000.  
Example value: 42010AEE-CF75-1EEB-BCED-D000A0641F97

### Mandatory HTTP Header Request Parameters:

- **content-disposition:** This parameter provides the file name of the file being sent. This parameter is only required when sending a *POST* method. The required format is *filename="<filename>"*.  
Example value: *filename="my\_log\_file.txt"*
- **Content-Type:** This parameter indicates which content type the body is formatted as and indicates the *MIME* type of the file being sent. This parameter is only required when sending a *POST* method.  
Example values: *text/plain; image/jpeg; application/pdf*

### Optional HTTP Header Request Parameters:

- **Accept:** This parameter indicates which content types, expressed as *MIME* types, the client is able to understand. The default value is *application/atom+xml*.  
Example value: *application/json*

## 8.2 OData Request Payload Format

For a *GET* method call, leave the body part blank.

When sending a *POST* call, the body must contain the content of the file being sent as attachment.

## 8.3 OData Response Payload Format

For a *GET* method call, see section 3.3 for properties of the associated entity **toReqAttachment**.

## 8.4 Example Call

The following example sends a plain text file to be attached into a requirement:

```
POST https://myfbhost.com:443/sap/opu/odata/SALM/EXT_R2D_INTEG_SRV/RequirementSet
(refGuid=guid'42010AEE-CF75-1EEB-BCED-D000A0641F97',
extSysGuid='EXT_SYSTEM_01',extId='MYBACKLOG-1')/toReqAttachment
```

### Header request parameters:

- content-disposition: filename="example\_file.txt"
- Content-Type: text/plain

### Request Body:

```
{
  "Lorem ipsum dolor sit amet, consetetur sadipscing elitr, sed diam nonumy eirmod tempor
  invidunt ut labore et dolore magna aliquyam erat, sed diam voluptua. At vero eos et accusam et
  justo duo dolores et ea rebum. Stet clita kasd gubergren, no sea takimata sanctus est Lorem
  ipsum dolor sit amet. Lorem ipsum dolor sit amet, consetetur sadipscing elitr, sed diam nonumy
  eirmod tempor invidunt ut labore et dolore magna aliquyam erat, sed diam voluptua. At vero eos
```



```
    et accusam et justo duo dolores et ea rebum. Stet clita kasd gubergren, no sea takimata sanctus  
    est Lorem ipsum dolor sit amet."  
}
```

The required HTTP response status code is 201 (Created).

## 9 SEND AN URL ATTACHMENT TO A REQUIREMENT IN FOCUSED BUILD FROM AN EXTERNAL TOOL (FROM SUPPORT PACKAGE 9)

The OData service `/SALM/EXT_R2D_INTEG` provides an *HTTP POST* method as part of the API to create attachments that are references to external sources into a requirement.

### 9.1 OData Web Service Endpoint

The OData web service endpoint on the SAP Solution Manager side is:

**`https://<SolMan host>:<https port>/sap/opu/odata/SALM/EXT_R2D_INTEG_SRV/RequirementSet(guid=guid'<Requirement GUID>',extSysGuid='<External System GUID>',extId='<External Tool Requirement Id>')/toReqUrl`**

**Supported HTTP Methods:** *GET, POST*

**Mandatory URL Query Parameters:**

- **guid:** This parameter must contain the GUID of the requirement in Focused Build to access in the following format: 00000000-0000-0000-0000-000000000000.  
Example value: 42010AEE-CF75-1EEB-BCED-D000A0641F97
- **extSysGuid:** This parameter must contain the GUID of the external system as configured in the Customizing of Focused Build. For more details, see section 12.  
Example value: EXT\_SYSTEM\_01
- **extId:** This parameter must contain the ID value of the requirement in the external tool as informed during the creation of the requirement in Focused Build.  
Example value: MYBACKLOG-1

**Mandatory HTTP Header Request Parameters:**

- **Content-Type:** This parameter indicates which content type the body is formatted as, expressed as *MIME* types. This parameter is only required when sending a *POST* method.  
Required value: *application/json*

**Optional HTTP Header Request Parameters:**

- **Accept:** This parameter indicates which content types, expressed as *MIME* types, the client is able to understand. The default value is *application/atom+xml*.  
Example value: *application/json*

### 9.2 OData Request Payload Format

For a *GET* method call, leave the body part blank.

When sending a *POST* call, the following *JSON* format body is required:

```
{
  "url": "URL to external attachment",
  "description": "Attachment name to be displayed in Focused Build user interface"
}
```

### 9.3 OData Response Payload Format

For a *GET* method call, see section 3.3 for properties of the associated entity **toReqUrl**.

### 9.4 Example Call

The following example creates a new attachment with reference to an external file into a requirement:

```
POST https://myfbhost.com:443/sap/opu/odata/SALM/EXT_R2D_INTEG_SRV/RequirementSet
(refGuid=guid'42010AEE-CF75-1EEB-BCED-D000A0641F97',
extSysGuid='EXT_SYSTEM_01',extId='MYBACKLOG-1')/toReqUrl
```

Header request parameters:

- Content-Type: application/json
- Accept: application/json

Request Body:

```
{
  "url": "https://help.sap.com/doc/1b9de204416c4a70bec88e6f1cbe3c9b/",
  "description": "Technical Guide"
}
```

The required HTTP response status code is 201 (Created).

## 10 CHANGE A BUSINESS PARTNER OF A REQUIREMENT IN FOCUSED BUILD FROM AN EXTERNAL TOOL

The OData service */SALM/EXT\_R2D\_INTEG* provides an *HTTP POST* method as part of the API to change the business partners of a requirement.

### 10.1 OData Web Service Endpoint

The OData web service endpoint on the SAP Solution Manager side is:

**https://<SolMan host>:<https port>/sap/opu/odata/SALM/EXT\_R2D\_INTEG\_SRV/RequirementSet(guid=guid'<Requirement GUID>',extSysGuid='<External System GUID>',extId='<External Tool Requirement Id>')/toReqPartner**

**Supported HTTP Methods:** *GET, POST*

**Mandatory URL Query Parameters:**

- **guid:** This parameter must contain the GUID of the requirement in Focused Build to access in the following format: 00000000-0000-0000-0000-000000000000.  
Example value: 42010AEE-CF75-1EEB-BCED-D000A0641F97
- **extSysGuid:** This parameter must contain the GUID of the external system as configured in the Customizing of Focused Build. For more details, see section 12.  
Example value: EXT\_SYSTEM\_01
- **extId:** This parameter must contain the ID value of the requirement in the external tool as informed during the creation of the requirement in Focused Build.  
Example value: MYBACKLOG-1

### Mandatory HTTP Header Request Parameters:

- **Content-Type:** This parameter indicates which content type the body is formatted as, expressed as *MIME* types. This parameter is only required when sending a *POST* method.  
Required value: *application/json*

### Optional HTTP Header Request Parameters:

- **Accept:** This parameter indicates which content types, expressed as *MIME* types, the client is able to understand. The default value is *application/atom+xml*.  
Example value: *application/json*

## 10.2 OData Request Payload Format

For a *GET* method call, the body part should be left blank.

When sending a *POST* call, the following *JSON* format body is required:

```
{
  "partnerId": "Business Partner ID number",
  "type": "Business Partner function to change"
}
```

To delete a business partner, leave the **partnerId** attribute value blank ("").

## 10.3 OData Response Payload Format

For a *GET* method call, see section 3.3 for properties of the associated entity **toReqPartner**.

## 10.4 Example Call

The following example adds the business partner 0000002311 with partner function */SALM/I3* (Requirement Team) to the requirement:

```
POST https://myfbhost.com:443/sap/opu/odata/SALM/
EXT_R2D_INTEG_SRV/RequirementSet(guid=guid'42010AEE-CF75-1EEB-BCED-D000A0641F97',
extSysGuid='EXT_SYSTEM_01',extId='MYBACKLOG-1')/toReqPartner
```

Header request parameters:

- Content-Type: *application/json*

Request Body:

```
{
  "partnerId": "0000002311",
  "type": "/SALM/13"
}
```

The required HTTP response status code is 201 (Created).

## 11 ADD RELATED SOLUTION ELEMENTS TO A REQUIREMENT IN FOCUSED BUILD FROM AN EXTERNAL TOOL (FROM SUPPORT PACKAGE 9)

The OData service `/SALM/EXT_R2D_INTEG` provides an HTTP POST method as part of the API to add related Solution Documentation elements to a requirement. If Solution Documentation elements are already linked to the requirement, the requested new element must belong to the same solution of the already linked elements.

### 11.1 OData Web Service Endpoint

The OData web service endpoint on the SAP Solution Manager side is:

**`https://<SolMan host>:<https port>/sap/opu/odata/SALM/EXT_R2D_INTEG_SRV/RequirementSet(guid=<guid>'<Requirement GUID>',extSysGuid='<External System GUID>',extId='<External Tool Requirement Id>')/toReqSolutionElement`**

**Supported HTTP Methods:** *GET, POST*

**Mandatory URL Query Parameters:**

- **guid:** This parameter must contain the GUID of the requirement in Focused Build to access in the following format: 00000000-0000-0000-0000-000000000000.  
Example value: 42010AEE-CF75-1EEB-BCED-D000A0641F97
- **extSysGuid:** This parameter must contain the GUID of the external system as configured in the Customizing of Focused Build. For more details, see section 12.  
Example value: EXT\_SYSTEM\_01
- **extId:** This parameter must contain the ID value of the requirement in the external tool as informed during the creation of the requirement in Focused Build.  
Example value: MYBACKLOG-1

**Mandatory HTTP Header Request Parameters:**

- **Content-Type:** This parameter indicates which content type the body is formatted as, expressed as *MIME* types. This parameter is only required when sending a *POST* method.  
Required value: *application/json*

**Optional HTTP Header Request Parameters:**

- **Accept:** This parameter indicates which content types, expressed as *MIME* types, the client is able to understand. The default value is *application/atom+xml*.  
Example value: *application/json*

## 11.2 OData Request Payload Format

For a *GET* method call, the body part should be left blank.

When sending a *POST* call, the following *JSON* format body is required:

```
{
  "occId": "Occurrence ID of the element to be added",
  "solutionId": "Solution ID where the element belongs to"
}
```

## 11.3 OData Response Payload Format

For a *GET* method call, see section 3.3 for properties of the associated entity **toReqSolutionElement**.

## 11.4 Example Call

The following example creates a new attachment with reference to an external file in a requirement:

```
POST https://myfbhost.com:443/sap/opu/odata/SALM/EXT_R2D_INTEG_SRV/RequirementSet
(refGuid=guid'42010AEE-CF75-1EEB-BCED-D000A0641F97',
extSysGuid='EXT_SYSTEM_01',extId='MYBACKLOG-1')/toReqSolutionElement
```

### Header request parameters:

- Content-Type: application/json
- Accept: application/json

### Request Body:

```
{
  "occId": "NFFytEm07jguxuvo5cBEYm",
  "solutionId": "NFFytEm07jgjZJaNqOBaYm"
}
```

The required HTTP response status code is 201 (Created).

## 12 CHANGE CUSTOMER FIELDS OF A REQUIREMENT IN FOCUSED BUILD FROM AN EXTERNAL TOOL (FROM SUPPORT PACKAGE 10)

The OData service */SALM/EXT\_R2D\_INTEG* provides *HTTP PUT* and *PATCH* method as part of the API to change the value of customer fields of a requirement.

You can only change active customer fields in customizing table */SALM/C\_CUSTFLD*. The possible properties in this block are the field names as described in the same customizing table.

### 12.1 OData Web Service Endpoint

The OData web service endpoint on the SAP Solution Manager side is:

```
https://<SolMan host>:<https port>/sap/opu/odata/SALM/
EXT_R2D_INTEG_SRV/CustomerHSet(guid=guid'<Requirement
GUID>',extSysGuid='<External System GUID>',extId='<External Tool Requirement Id>')
```

## Supported HTTP Methods: *PUT, PATCH*

### Mandatory URL Query Parameters:

- **guid:** This parameter must contain the GUID of the requirement in Focused Build to access in the following format: 00000000-0000-0000-0000-000000000000.  
Example value: 42010AEE-CF75-1EEB-BCED-D000A0641F97
- **extSysGuid:** This parameter must contain the GUID of the external system as configured in the Customizing of Focused Build. For more details, see section 12.  
Example value: EXT\_SYSTEM\_01
- **extId:** This parameter must contain the ID value of the requirement in the external tool as informed during the creation of the requirement in Focused Build.  
Example value: MYBACKLOG-1

### Mandatory HTTP Header Request Parameters:

- **Content-Type:** This parameter indicates which content type the body is formatted as, expressed as *MIME* types.  
Required value: *application/json*

## 12.2 OData Request Payload Format

When sending a *PUT* or *PATCH* call, the following JSON format body is required:

```
{  
  "zzaflid000001": "/Date(1665446400000)/",  
  "zzaflid000002": "My field value"  
}
```

## 12.3 Example Call

The following example updates two customer fields with new in a requirement:

```
POST https://myfbhost.com:443/sap/opu/odata/SALM/EXT_R2D_INTEG_SRV/CustomerHSet  
(refGuid=guid'42010AEE-CF75-1EEB-BCED-D000A0641F97',  
extSysGuid='EXT_SYSTEM_01',extId='MYBACKLOG-1')
```

### Header request parameters:

- Content-Type: application/json

### Request Body:

```
{  
  "zzaflid000001": "/Date(1665446400000)/",  
  "zzaflid000002": "My field value"  
}
```

The required HTTP response status code is 204 (No Content).

## 13 CHANGE THE STATUS OF A REQUIREMENT IN FOCUSED BUILD FROM AN EXTERNAL TOOL

The OData service `/SALM/EXT_R2D_INTEG` provides an *HTTP POST* method as part of the API to change the status of a requirement. The method triggers the standard post-processing framework status change methods, including all customized checks and actions. After the status change of the requirement is successfully performed in Focused Build, an outbound call to the external system is triggered. For more details about the outbound part of this API, see section 12.

### 13.1 OData Web Service Endpoint

The OData web service endpoint on the SAP Solution Manager side is:

**https://<SolMan host>:<https port>/sap/opu/odata/SALM/EXT\_R2D\_INTEG\_SRV/ChangeStatus?guid=guid'<Requirement GUID>'&extSysGuid='<External System GUID>'&extId='<External Tool Requirement Id>'&userStatus='<Target User Status code>'**

**Supported HTTP Methods:** *POST*

**Mandatory URL Query Parameters:**

- **guid:** This parameter must contain the GUID of the requirement in Focused Build to access in the following format: 00000000-0000-0000-0000-000000000000.  
Example value: 42010AEE-CF75-1EEB-BCED-D000A0641F97
- **extSysGuid:** This parameter must contain the GUID of the external system as configured in the customizing of Focused Build. For more details, see section 12.  
Example value: EXT\_SYSTEM\_01
- **extId:** This parameter must contain the ID value of the requirement in the external tool as informed during the creation of the requirement in Focused Build.  
Example value: MYBACKLOG-1
- **userStatus:** This parameter must contain the target user status code to be set.  
Example value: E0009

**Optional HTTP Header Request Parameters:**

- **Accept:** This parameter indicates which content types, expressed as *MIME* types, the client is able to understand. The default value is *application/atom+xml*.  
Example value: *application/json*

### 13.2 OData Request Payload Format

Leave blank.

### 13.3 OData Response Payload Format

When successful, the response returns the header properties of the requirement including the new target status. See section 3.3 for the list of properties.

### 13.4 Example Call

The following example sets the status of a requirement to **To be Approved**:

POST https://myfbhost.com:443/sap/opu/odata/SALM/EXT\_R2D\_INTEG\_SRV/ChangeStatus?guid=guid'42010AEE-CF75-1EEB-BCED-D000A0641F97'&extSysGuid='EXT\_SYSTEM\_01'&extId='MYBACKLOG-1'&userStatus='E0009'

#### Header request parameters:

- Accept: application/json

Request Body: <blank>

The required HTTP response status code is 201 (Created).

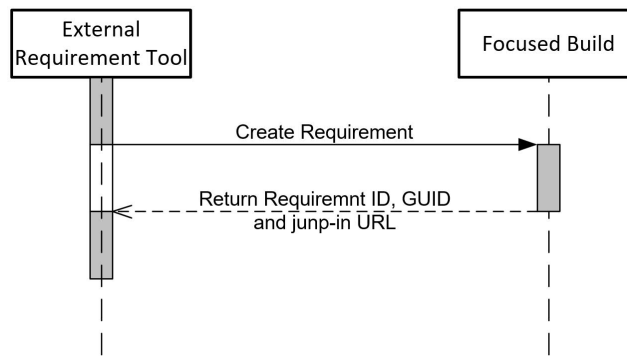
#### Example Response Body:

```
{
  "d": {
    "__metadata": {
      "id":
"https://myfbhost.com:443/sap/opu/odata/SALM/EXT_R2D_INTEG_SRV/RequirementSet(guid=guid'42010AEE-CF75-1EEB-BCED-D000A0641F97',extSysGuid='EXT_SYSTEM_01',extId='MYBACKLOG-1')",
      "uri":
"https://myfbhost.com:443/sap/opu/odata/SALM/EXT_R2D_INTEG_SRV/RequirementSet(guid=guid'42010AEE-CF75-1EEB-BCED-D000A0641F97',extSysGuid='EXT_SYSTEM_01',extId='MYBACKLOG-1')",
      "type": "SALM_EXT_R2D_INTEG_SRV.Requirement"
    },
    "guid": "42010AEE-CF75-1EEB-BCED-D000A0641F97",
    "objectId": "8000034900",
    "extSysGuid": "EXT_SYSTEM_01",
    "extId": "MYBACKLOG-1",
    "title": "My new Requirement",
    "priority": "2",
    "priorityTxt": "2: High",
    "status": "E0009",
    "statusTxt": "To be Approved",
    "local": "",
    "valuePt": 100,
    "effortPt": 50,
    "classification": "1",
    "classificationTxt": "WRICEF",
    "plannedProject": "MY_BUILD_PROJECT",
    "url": "https://myfbhost.com:443/sap/bc/ui2/flp?sap-client=001&GUID=42010AEE-CF75-1EEB-BCED-D000A0641F97&sap-language=EN#Action-genericApp?configId=1&/configId/1/workspace/42010AEE-CF75-1EEB-BCED-D000A0641F97"
  }
}
```

## **14 CREATE A REQUIREMENT IN FOCUSED BUILD FROM AN EXTERNAL TOOL UP TO SP07**

To provide a generic API, we use OData web service calls. SAP Solution Manager provides such an OData web service that can be called by the external tool to create requirements.





## 14.1 OData Web Service Endpoint

The OData web service endpoint on the SAP Solution Manager side is:

**Error! Hyperlink reference not valid. host>:<https port>/sap/opu/odata/SALM/EXT\_INTEG\_CREATE\_SRV/IsCreateSet**

## 14.2 OData Payload Format

The OData payload sent to SAP Solution Manager needs to have the following JSON content:

```

{
  "IvExtSysGuid": "EXTERNAL_SYSTEM_GUID",
  "IvExtId": "EXTERNAL_ID",
  "IvTitle": "TITLE",
  "IvPriority": "PRIORITY",
  "IvLocal": "LOCAL",
  "IvValuePt": "VALUE_POINT",
  "IvEffortPt": "EFFORT_POINT",
  "IvDescription": "DESCRIPTION_TXT",
  "IvAssumption": "ASSUMPTION_TXT",
  "IvSolution": "SOLUTION_TXT",
  "IvOwnerFirstName": "OWNER_FIRST_NAME",
  "IvOwnerLastName": "OWNER_LAST_NAME",
  "IvOwnerUser": "OWNER_USER",
  "IvOwnerEmail": "OWNER_EMAIL",
  "IvBpexFirstName": "BP_EXPERT_FIRST_NAME",
  "IvBpexLastName": "BP_EXPERT_LAST_NAME",
  "IvBpexUser": "BP_EXPERT_USER",
  "IvBpexEmail": "BP_EXPERT_EMAIL"
}
  
```

The following table shortly describes the meaning of each field and shows if it is mandatory or can be omitted or left blank (“”).

Field	Description	Mandatory
EXTERNAL_SYSTEM_GUID	ID that unambiguously identifies the external tool	x
EXTERNAL_ID	ID of the related object (requirement) in the external tool	x
TITLE	Requirement title	x
PRIORITY	Valid SAP Solution Manager priority	x
LOCAL	Marker to specify if a requirement is for central template or local roll-out project	
VALUE_POINT	Unit of measure for estimating the value a requirement has for a project	
EFFORT_POINT	Unit of measure for estimating the effort for a requirement in a project	
DESCRIPTION_TXT	Description of requirement	
ASSUMPTION_TXT	Assumption of requirement	
SOLUTION_TXT	Solution of requirement	
OWNER_FIRST_NAME	First name of requirement owner	
OWNER_LAST_NAME	Last name of requirement owner	
OWNER_USER	SAP Solution Manager username of requirement owner	
OWNER_EMAIL	E-mail address of requirement owner	
BP_EXPERT_FIRST_NAME	First name of business process expert	
BP_EXPERT_LAST_NAME	Last name of business process expert	
BP_EXPERT_USER	SAP Solution Manager username of business process expert	
BP_EXPERT_EMAIL	E-mail address of business process expert	

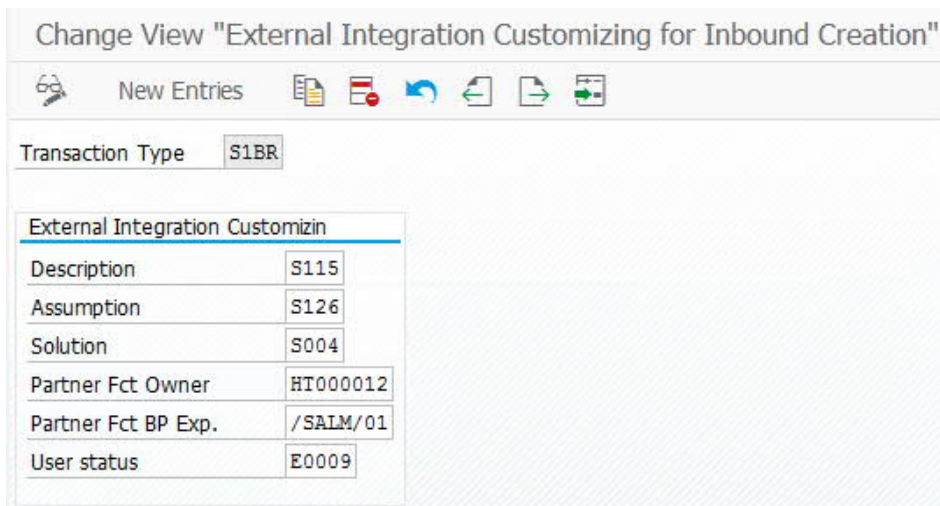
### 14.3 Payload Content Mapping

The JSON content sent by the external tool is analyzed and mapped to the respective SAP Solution Manager fields. In the following sub-chapter, the business partner mapping is explained.

#### 14.3.1 Partner Mapping

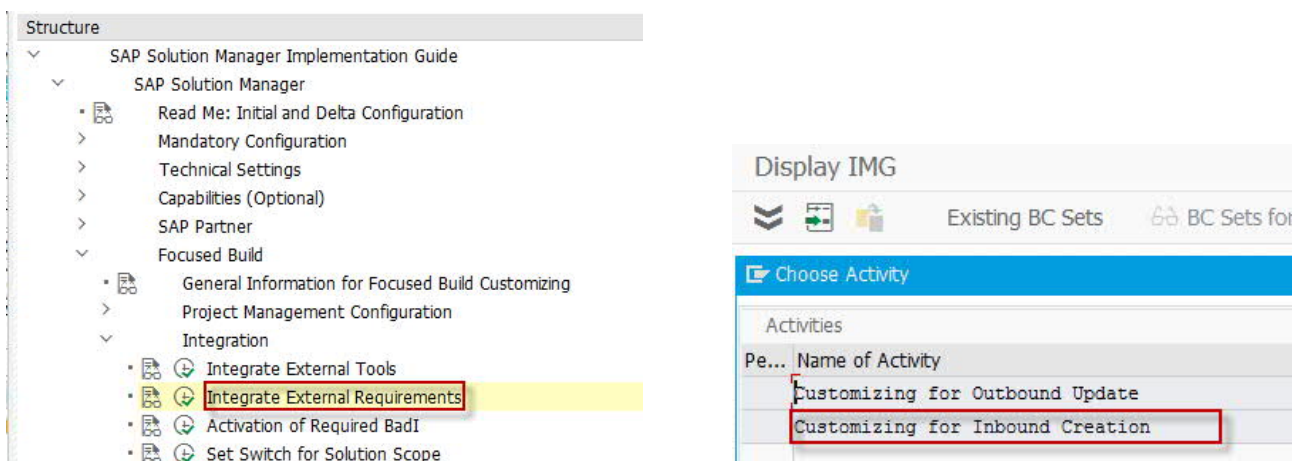
The Requirements API handles two different partners, the owner of a requirement and the business process expert. There are three different possibilities to determine the business partner numbers. First, the usernames (OWNER\_USER and BP\_EXPERT\_USER) are checked. If there is a business partner with an identical username in SAP Solution Manager, it is used for the respective partner function in the requirement. If the value is empty or does not match the first and last name (OWNER\_FIRST\_NAME and OWNER\_LAST\_NAME), the first and last name of the business partner (BP\_EXPERT\_FIRST\_NAME and BP\_EXPERT\_LAST\_NAME) are checked respectively. If this still does not match, the e-mail address is taken into account (OWNER\_EMAIL, BP\_EXPERT\_EMAIL). If no business partner number could be determined, the field stays empty in the created requirement.

### 14.4 Payload Content Customizing



In Focused Build, the process type **S1BR** is used for requirements. Therefore, the Customizing needs to be done for **S1BR**. You find the relevant Customizing in the SAP Reference IMG under the following path:

*SAP Solution Manager Implementation Guide -> SAP Solution Manager -> Focused Build -> Integration -> Integrate External Requirements*



#### 14.4.1 Text Customizing

The fields **DESCRIPTION\_TXT**, **ASSUMPTION\_TXT**, and **SOLUTION\_TXT** contain the texts for the description, assumption, and solution for the requirement to be created. Focused Build uses the text IDs *S115*, *S126*, and *S004* for these texts. If you use other IDs, you need to change them here.

#### 14.4.2 Partner Customizing

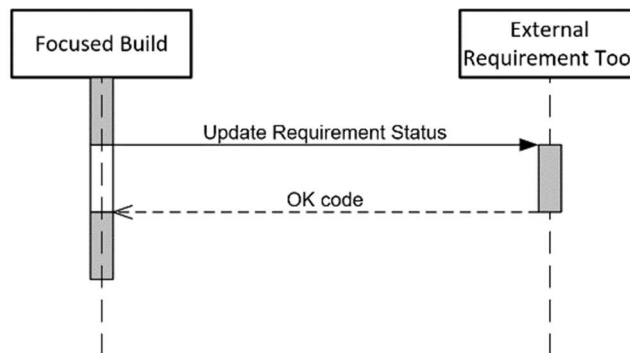
To determine business partner numbers, follow the instructions in chapter 2.3.1. Maintain the partner functions to save the determined partner numbers in the **Partner Fct. Owner** and **Partner Fct. BP expert** fields. In Focused Build, the partner functions *HT000012* and */SALM/01* are used. If you use other partner functions for the owner and the BP expert, you can maintain them here.

### 14.4.3 Initial User Status

The initial user status when a requirement is created is **Draft – E0001**. If you want to directly set status **To Be Approved – E0009** instead, you need to maintain this status here. Be aware that no other status should be customized as you need to be able to create a Solution Documentation element for the requirement, which is not possible in any later status.

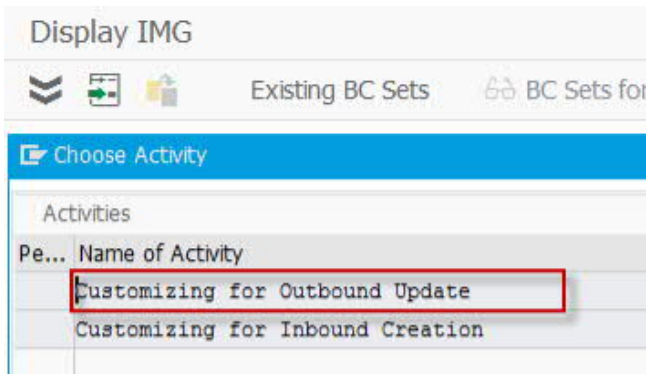
## 15 COMMUNICATE STATUS UPDATE TO AN EXTERNAL TOOL

Whenever the status of a requirement in SAP Solution Manager is changed to a defined value, this information is sent via OData web service to the external tool. A JSON payload file is generated out of the requirement that includes the necessary data.

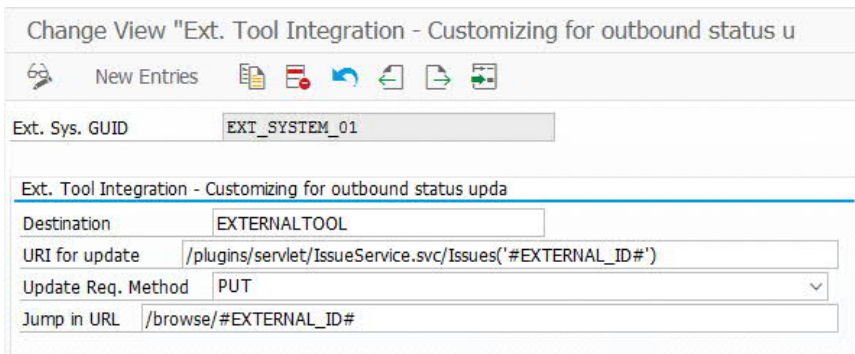


### 15.1 Outbound Customizing

The Customizing for the outbound service call can be found under the following path:  
*SAP Solution Manager Implementation Guide -> SAP Solution Manager -> Focused Build -> Integration -> Integrate External Requirements*



You can maintain settings for different external tools here. They are unambiguously identified by the *External System GUID*.



In the *Destination* field, which is a RFC destination of type G (HTTP connection to external server), you define the external requirement tool that is called for the outbound web service for each external system GUID. To generate the URL to the OData web service of the external requirement tool, the API uses the host, port, and protocol from the RFC destination and concatenates it with the **URI for update** defined here.

To provide full flexibility, you can define the HTTP **Update Request Method**. In standard OData web service, the create call uses the *POST* method and the update call the *PUT* method. That's why we use *PUT* here.

In order to update an object in the external tool, the OData service normally requires the object ID in the URL. The object ID of the external tool is stored in SAP Solution Manager as *EXTERNAL\_ID*. By masking the *EXTERNAL\_ID* with # characters, you can add the *EXTERNAL\_ID* to the URL.

Example:

`/plugins/servlet/IssueService.svc/Issues('#EXTERNAL_ID#')`

With an *EXTERNAL\_ID* = BRF-123, this results in an update URL like:

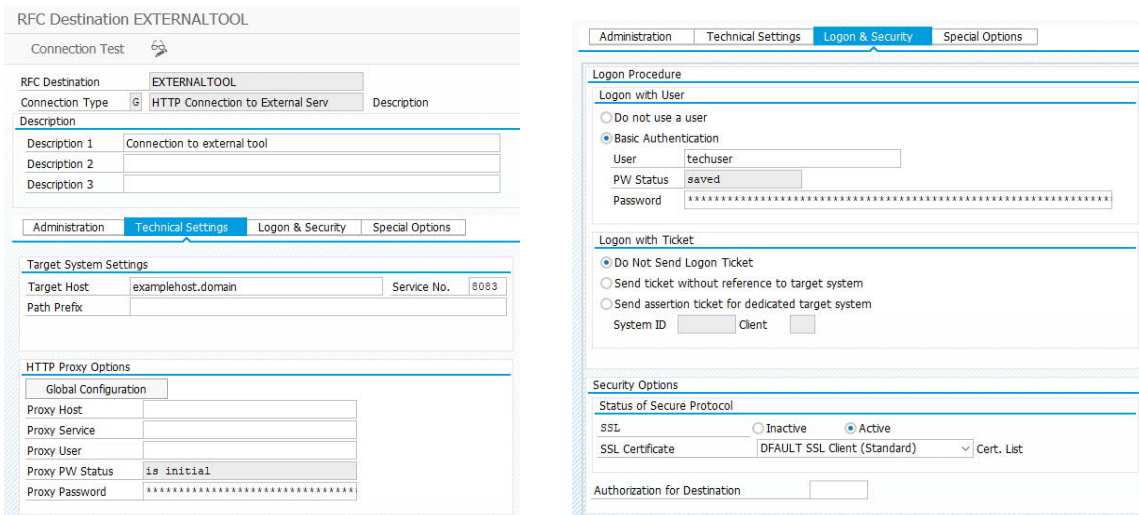
`https://examplehost.domain:8083/plugins/servlet/IssueService.svc/Issues('BRF-123')`

With the **Jump in URL** field, you can set a URI that is used to create a direct jump-in link to the object in the external requirement tool. The host, port, and protocol information from the destination defined in the project mapping is concatenated with the URI defined here. Here, you can also mask the *EXTERNAL\_ID* with # characters to add the *EXTERNAL\_ID* to the URL. To display this link in the requirement, you need to insert the external ID in the UI configuration.

## 15.2 Connectivity to External Tool

In transaction SM59, create the destination used in the API configuration . It needs to be a connection of type G. On the **Technical Settings** tab, maintain the host (**Target Host**) and https port (**Service No. of your external requirement tool**). On the **Logon & Security** tab, activate SSL. Prerequisite for this is that your SAP Solution Manager has SSL correctly configured, and you need to make sure that the selected SSL client trusts the certificate of your external requirement tool.

For the communication to the external requirement tool, the system uses a technical user which authenticates under **Basic Authentication**. The user and password are also maintained on the **Logon & Security** tab. For security reasons, it is therefore important that you set up the connectivity via SSL.



### 15.3 OData Payload Format

The generated JSON payload uses the standard JSON format. It includes the external system ID, the external object GUID and ID, and the newly set status, technical name, and description. See the following example:

```
{
  "EXT_ID": "EXT_SYSTEM_01",
  "OBJECT_GUID": "005056B6B05D1EE99B9AF6FE6412F7D7",
  "OBJECT_ID": "800010272",
  "STATUS_NEW": "E0003",
  "STATUS_DESC": "Approved"
}
```

### 15.4 Triggering Status Updates

ChARM actions trigger the outbound web service call during status changes. The action *SI\_UPD\_EXT* is customized for all status values.

### 15.5 External Requirement Tool OData Web Service Requirements

To use the external requirement tool API, the external requirement tool needs to provide an OData web service that has the following requirements implemented:

- It needs to provide basic authentication as an authentication procedure. In addition, the web service should be called via https.
- It needs to accept the JSON payload sent by the SAP Solution Manager API.
- It needs to map the SAP Solution Manager fields to the corresponding fields in the external tool.

[www.sap.com/contactsap](http://www.sap.com/contactsap)

© 2022 SAP SE or an SAP affiliate company. All rights reserved.

No part of this publication may be reproduced or transmitted in any form or for any purpose without the express permission of SAP SE or an SAP affiliate company.

The information contained herein may be changed without prior notice. Some software products marketed by SAP SE and its distributors contain proprietary software components of other software vendors. National product specifications may vary.

These materials are provided by SAP SE or an SAP affiliate company for informational purposes only, without representation or warranty of any kind, and SAP or its affiliated companies shall not be liable for errors or omissions with respect to the materials. The only warranties for SAP or SAP affiliate company products and services are those that are set forth in the express warranty statements accompanying such products and services, if any. Nothing herein should be construed as constituting an additional warranty.

In particular, SAP SE or its affiliated companies have no obligation to pursue any course of business outlined in this document or any related presentation, or to develop or release any functionality mentioned therein. This document, or any related presentation, and SAP SE's or its affiliated companies' strategy and possible future developments, products, and/or platform directions and functionality are all subject to change and may be changed by SAP SE or its affiliated companies at any time for any reason without notice. The information in this document is not a commitment, promise, or legal obligation to deliver any material, code, or functionality. All forward-looking statements are subject to various risks and uncertainties that could cause actual results to differ materially from expectations. Readers are cautioned not to place undue reliance on these forward-looking statements, and they should not be relied upon in making purchasing decisions.

SAP and other SAP products and services mentioned herein as well as their respective logos are trademarks or registered trademarks of SAP SE (or an SAP affiliate company) in Germany and other countries. All other product and service names mentioned are the trademarks of their respective companies. See [www.sap.com/trademark](http://www.sap.com/trademark) for additional trademark information and notices.

**THE BEST RUN**

