



# SAP Business One Cloud 1.1

## Top *Re*Solutions

June, 2020

PUBLIC

# Important Corrections Delivered in Patches

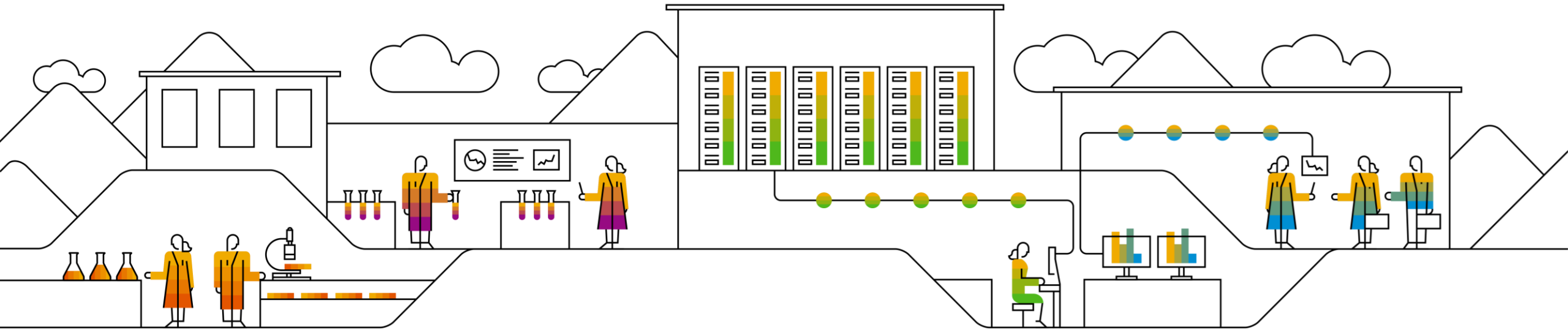
SAP Business One Cloud 1.1

This presentation provides an overview of the most important corrections, also known as Top *ReSolutions*, which are delivered in patches.\* A selection of the corrections is presented in more detail.

For a complete overview of the corrections delivered in a specific patch, refer to the Overview Note.

Please also note the verified combinations of SAP Business One Cloud and SAP Business One by reading the SAP Note [1756002](#)

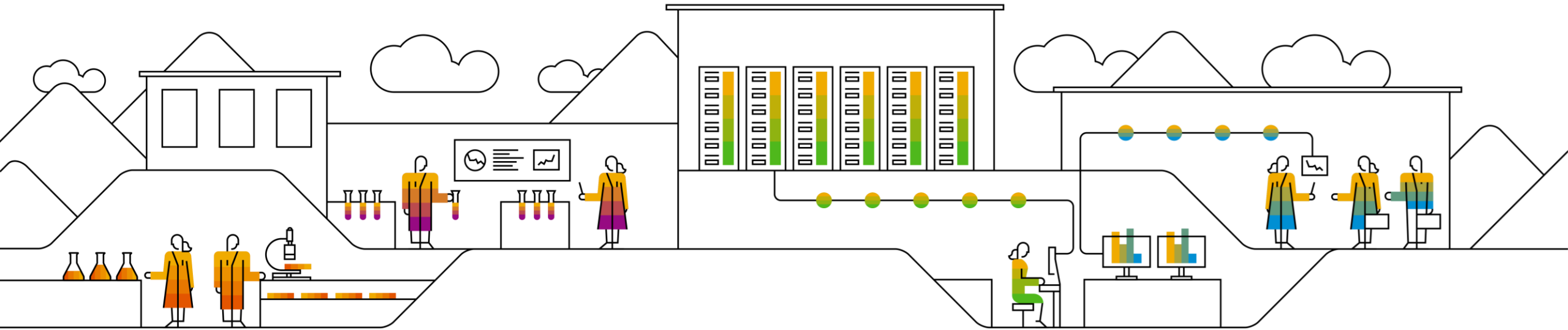
# SAP Business One Cloud 1.1 PL16



# SAP Business One Cloud 1.1 PL16 - Overview Note [2847432](#)

Top ReSolution	More Details
Fuzzy Search is enabled for Task History and Audit Logs	SAP Note <a href="#">2833913</a>
Limit maximum number of Tenants on a Service Unit.	SAP Note <a href="#">2846359</a>
Limit maximum number of Tenants for Reseller user.	SAP Note <a href="#">2854504</a>
Reseller isolation for Integration Framework	SAP Note <a href="#">2832605</a>
Obsolete logical machines removal from the CCC	SAP Note <a href="#">2767212</a>
Service user has full permissions for the share folder during the BAS registration	SAP Note <a href="#">2919961</a>
Enhanced length for Tenant, Customer, Reseller Name and Service Unit Names	SAP Note <a href="#">2904212</a>
License file deletion for Offline License Servers	SAP Note <a href="#">2896537</a>
Assign blocked user to the Tenant	SAP Note <a href="#">2895108</a>
Enhanced Tenant isolation on database user level	SAP Note <a href="#">2891453</a>
Special character support for BAS service running on MS SQL Instances	SAP Note <a href="#">2853590</a>
Tenant export supports special character for Linux mounts	SAP Note <a href="#">2822960</a>

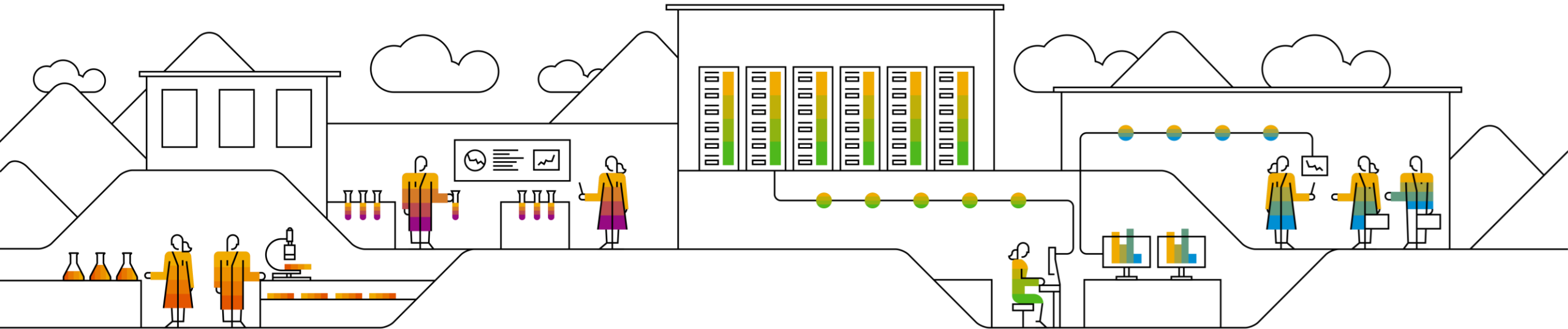
# SAP Business One Cloud 1.1 PL15



# SAP Business One Cloud 1.1 PL15 - Overview Note [2787176](#)

Top ReSolution	More Details
Improved security by deactivating the default domain admin user	SAP Note <a href="#">2815684</a>
New global settings for tenant registration for reseller operators	SAP Note <a href="#">2797808</a>
Domain users can be seen on customer tab after being assigned to customer	SAP Note <a href="#">2792197</a>
User Access Portal lists all Browser Access Server services	SAP Note <a href="#">2767212</a>
Improved SLD Agent upgrade by removing the obsolete files	SAP Note <a href="#">2777118</a>
Tenant upgrade execution under the elevated authorization for better security	SAP Note <a href="#">2757156</a>

# SAP Business One Cloud 1.1 PL14

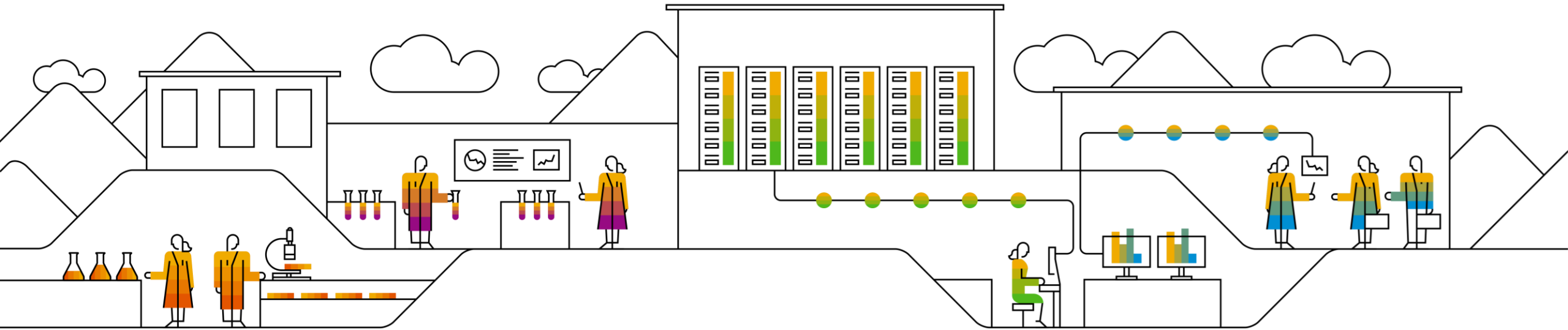


# SAP Business One Cloud 1.1 PL14 - Overview Note [2762633](#)

Top ReSolution	More Details
Cloud and Reseller operator can configure Job Service	SAP Note <a href="#">2756449</a>
The trigger creation was deactivated for the database user generated by SLD	SAP Note <a href="#">2757118</a>
Extensions isolation by reseller user on a service unit	SAP Note <a href="#">2755984</a>
Grant permission for the reseller operation on the tenant storage	SAP Note <a href="#">2757038</a>
Grant permission for the reseller operation on the implementation repository	SAP Note <a href="#">2757161</a>
Grant permission for the reseller operation on the company template repository	SAP Note <a href="#">2755917</a>
Two-Factor authentication support for the reseller operator	SAP Note <a href="#">2763597</a>



# SAP Business One Cloud 1.1 **PL13**



# SAP Business One Cloud 1.1 PL13 - Overview Note [2705074](#)

Top ReSolution	More Details
Control operations when domain administrators are added to customers	SAP Note <a href="#">2728726</a>
Schema export and import Cloud Control Center	SAP Note <a href="#">2714103</a>
Cloud Control Center supports easy navigation using hyperlinks	SAP Note <a href="#">2704394</a>
Improved performance for Audit Log records cleanup	SAP Note <a href="#">2694731</a>
Installation of OnPremise components after Cloud SLD Agent uninstallation	SAP Note <a href="#">2709337</a>
Cloud Control Center supports managing account for Active Directory operations	SAP Note <a href="#">2707667</a>
Tenant restore for reseller operator without the company template assignment	SAP Note <a href="#">2731049</a>
Replace the SSL Certificate used by the User Access Portal.	SAP Note <a href="#">2715007</a>

# Cloud Control Center supports easy navigation using hyperlinks

Customers

Status	Name	Type	Country	Location	Contact Person	Installation Number	Description	Reseller	Result
	C_93PL07HANA	Customer				SAP-INTER1			
	UPc1c1	Customer							
	C_RESELLER10_13	Customer						R1	
	C1016	Customer						R10	
	C_1015	Customer							
	C_1014	Trial Customer				Trial Version			
	C_1013	Customer							
	c_test	Customer							
	C_Ahln1	Customer							
	C_ShirleyTest	Customer						R_ShirleyTest	

Resellers

Status	Name	Country	Location	Contact Person	Phone	Description
	R_Shirley					
	R1					

Visible records 2 / Total records 12

Configuration Service Units Customers License Files Storage Authorization Reseller Operator Management

Assign Unassign

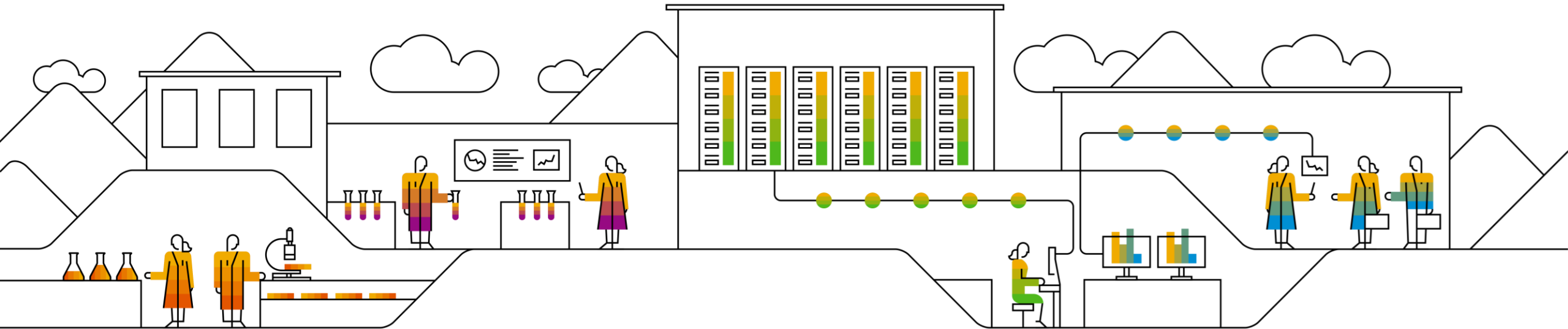
Status	Name	Type	Country	Location	Contact Person	Phone	Installation Number	Description
	C_93PL06HANA2	Customer						
	C_93PL06HANA	Customer						
	C_RESELLER10_13	Customer						

Customers

Status	Name	Type	Country	Location	Contact Person	Installation Number	Description	Reseller	Result
	C_93PL07HANA	Customer				SAP-INTER1			
	UPc1c1	Customer							
	C_RESELLER10_13	Customer						R1	
	C1016	Customer						R10	
	C_1015	Customer							
	C_1014	Trial Customer				Trial Version			
	C_1013	Customer							
	c_test	Customer							
	C_Ahln1	Customer							
	C_ShirleyTest	Customer						R_ShirleyTest	

Navigation between CCC entities and interlink entities using hyperlinks.

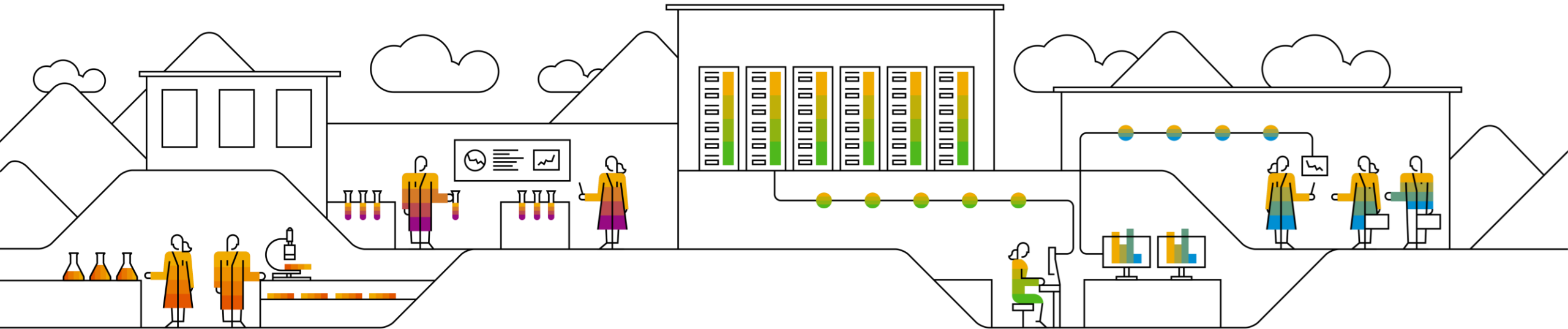
# SAP Business One Cloud 1.1 PL12



# SAP Business One Cloud 1.1 PL12 - Overview Note [2693017](#)

Top ReSolution	More Details
Email based authentication	SAP Note <a href="#">2647460</a>
Open attachments on client machines in Cloud environment	SAP Note <a href="#">2672198</a>
Support of Microsoft SQL Server 2017	SAP Note <a href="#">2678536</a>
Tool to change the certificate of the Cloud system landscape directory in Linux	SAP Note <a href="#">2551293</a>
Support Info and Reactivate DB Users buttons are available for reseller operators	SAP Note <a href="#">2628027</a>
Support deleting tenants as reseller operator in Cloud Control Center	SAP Note <a href="#">2679432</a>
Support reseller operators to change customer's License File	SAP Note <a href="#">2677207</a>

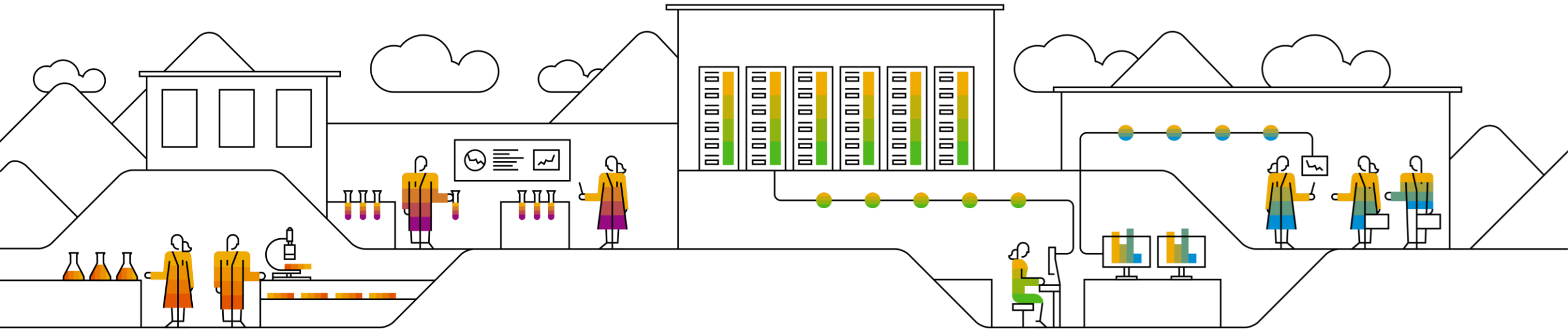
# SAP Business One Cloud 1.1 PL11



# SAP Business One Cloud 1.1 PL11 - Overview Note [2644003](#)

Top <i>Re</i> Solution	More Details
Import SAP HANA Schemas from Backup in Cloud Control Center	SAP Note <a href="#">2643612</a>
Allow centralized logoff with notification support - for unattended Add-on upgrade	SAP Note <a href="#">2643831</a>
Enable Launch Application Option in SAP Business One Cloud Environment	SAP Note <a href="#">2650453</a>

# SAP Business One Cloud 1.1 PL10

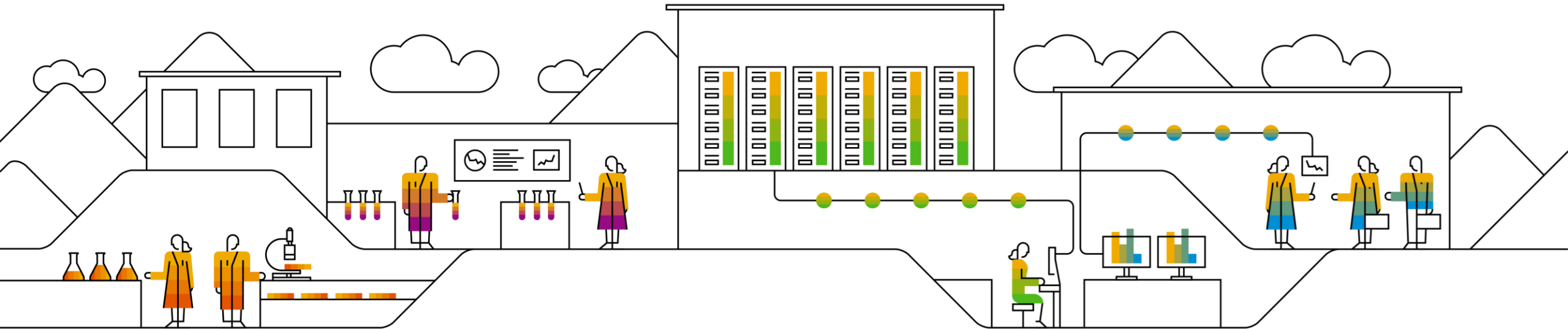




# SAP Business One Cloud 1.1 PL10 - Overview Note [2570755](#)

Top ReSolution	More Details
64-bit and 32-bit versions of extensions can be used in parallel	SAP Note <a href="#">2437335</a>
Trusted connection when logging on to Browser Access	SAP Note <a href="#">2437893</a>
Adding DB user management into Cloud SLD/CCC	SAP Note <a href="#">2572982</a>
64bit light weight add-on deployment on cloud	SAP Note <a href="#">2582407</a>
Possibility for operator/reseller to change passwords of own users	SAP Note <a href="#">2620619</a>

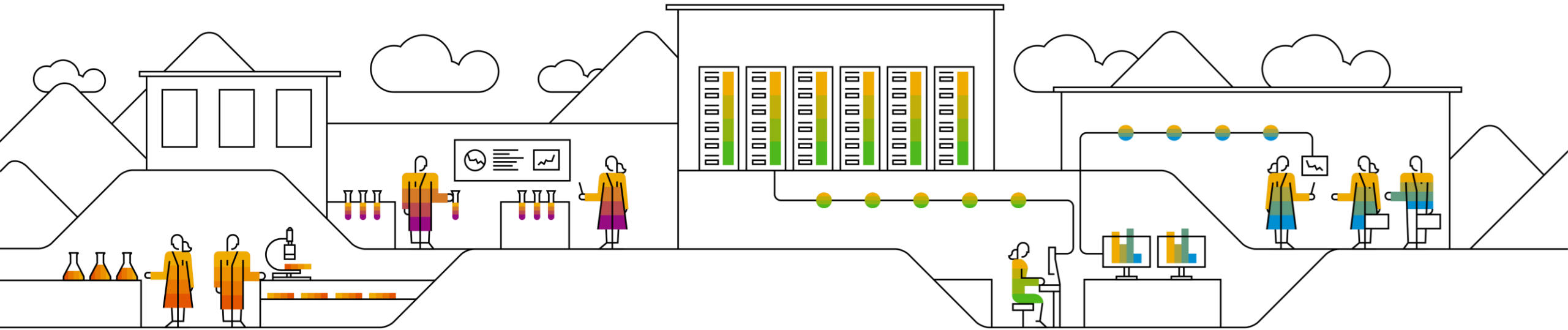
# SAP Business One Cloud 1.1 **PL09 HF1**



# SAP Business One Cloud 1.1 PL09 Hotfix 1- Overview Note [2601205](#)

Top <i>Re</i> Solution	More Details
Access SAP HANA tenant when DB instance is registered under non-system user	SAP Note <a href="#">2599090</a>

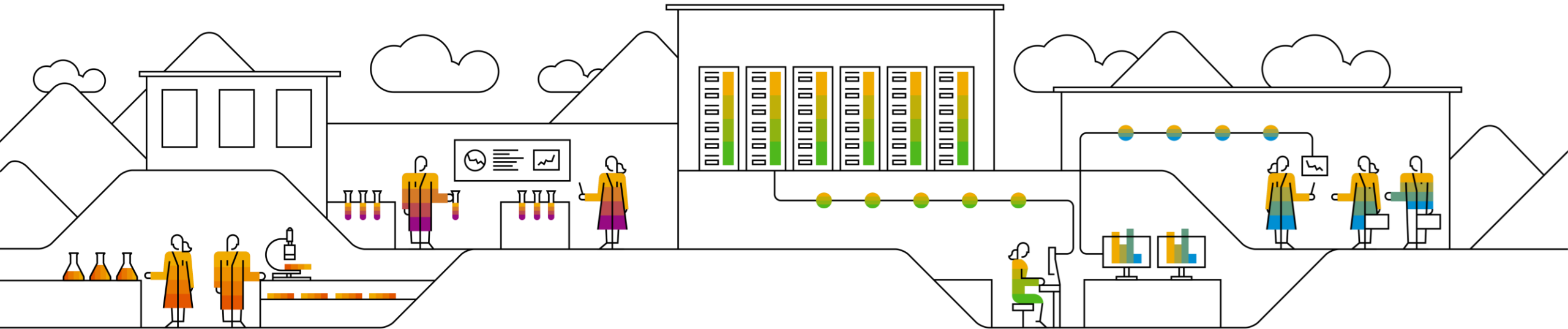
# SAP Business One Cloud 1.1 PL09



# SAP Business One Cloud 1.1 PL09 - Overview Note [2562967](#)

Top ReSolution	More Details
Support for SAP Business One 9.3 PL01 and SAP Business One 9.2 PL10	SAP Note <a href="#">2562967</a>
"Support Info" Function Added to Service Unit and Tenant	SAP Note <a href="#">2552978</a>
Reseller Creation Wizard Allows Only Two Users to be Added	SAP Note <a href="#">2436649</a>
Enable Partner Support User in CCC for Resellers	SAP Note <a href="#">2576493</a>
Cloud Setup Wizard Runs on SUSE 12 SP1	SAP Note <a href="#">2419517</a>

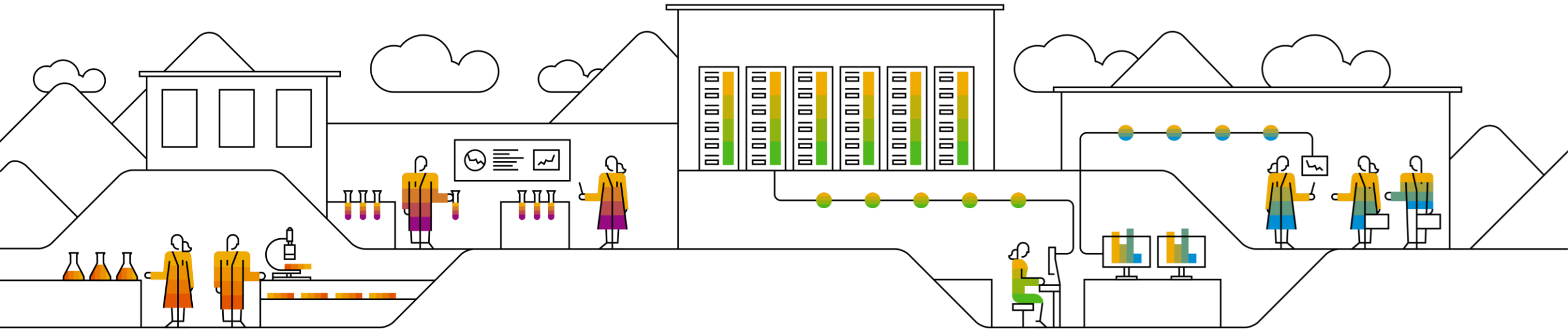
# SAP Business One Cloud 1.1 PL08



# SAP Business One Cloud 1.1 PL08 - Overview Note [2391033](#)

Top <i>Re</i> Solution	More Details
SAP Business One 64-bit client support	SAP Note <a href="#">2397164</a>
Cloud Control Center can handle data faster	SAP Note <a href="#">2383127</a>
Change domain user password via User Access Portal	SAP Note <a href="#">2406858</a>

# SAP Business One Cloud 1.1 PL7

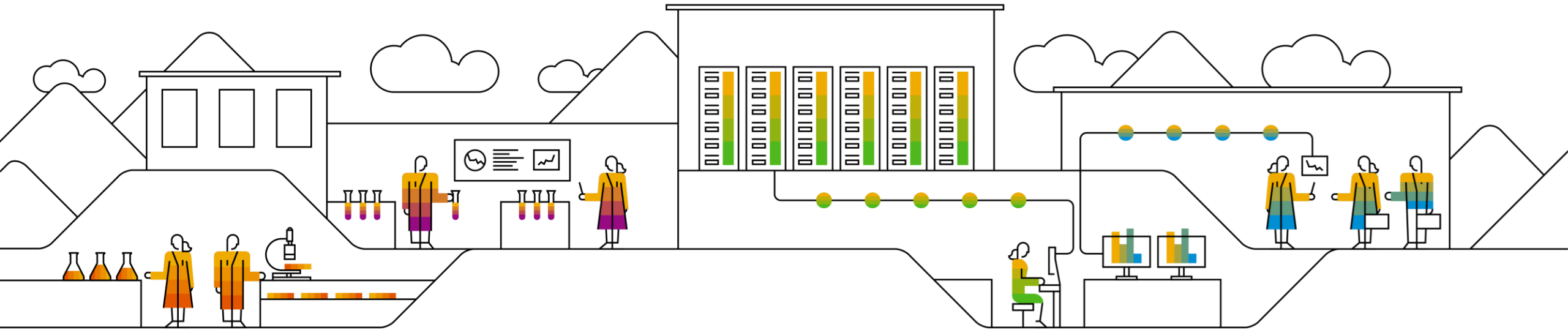




# SAP Business One Cloud 1.1 PL07 - Overview Note [2294383](#)

Top ReSolution	More Details
New User Access Portal	SAP Note <a href="#">2373769</a>
In place Upgrade during Tenant Registration	SAP Note <a href="#">2306971</a>
Installation of Mobile Service in Cloud environment	SAP Note <a href="#">2347835</a>
Linux installation for Cloud Control Center and SLD Agent	SAP Note <a href="#">2372436</a>
Service Layer enables SSO on SAP Business One Cloud, version for SAP HANA	SAP Note <a href="#">2371396</a>
Add Browser Access Servers process size setting to Cloud Control Center	SAP Note <a href="#">2361413</a>
Two-Factor Authentication in SAP Business One Cloud	SAP Note <a href="#">2388843</a>

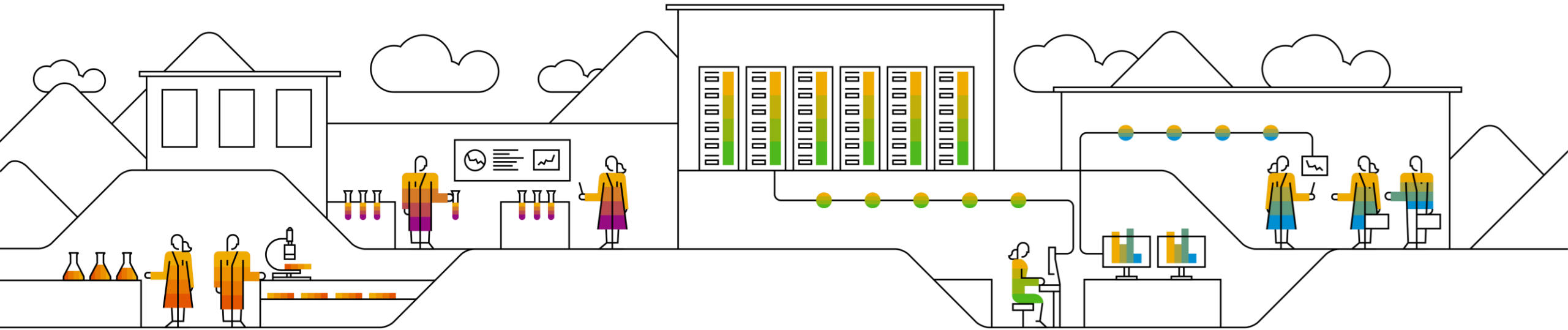
# SAP Business One Cloud 1.1 PL6



# SAP Business One Cloud 1.1 PL06 - Overview Note [2281798](#)

Top ReSolution	More Details
User Access Portal for Browser Access Reconfiguration	SAP Note <a href="#">2297463</a>
Chrome Browser supported	SAP Note <a href="#">2296231</a>
SAP Business One 9.2 supported (PL02)	SAP Note <a href="#">2296223</a>
HANA Backup Service	SAP Note <a href="#">2297466</a>
SLD Agent Task Execution Distribution Control	SAP Note <a href="#">2297476</a>
Support of SQL Server 2014	SAP Note <a href="#">2296203</a>
SLD Cancel tenant Create, Upgrade, Duplicate operation	SAP Note <a href="#">2297483</a>
SLD Task History	SAP Note <a href="#">2301396</a>

# SAP Business One Cloud 1.1 PL5



# SAP Business One Cloud 1.1 PL05 - Overview Note [2142062](#)

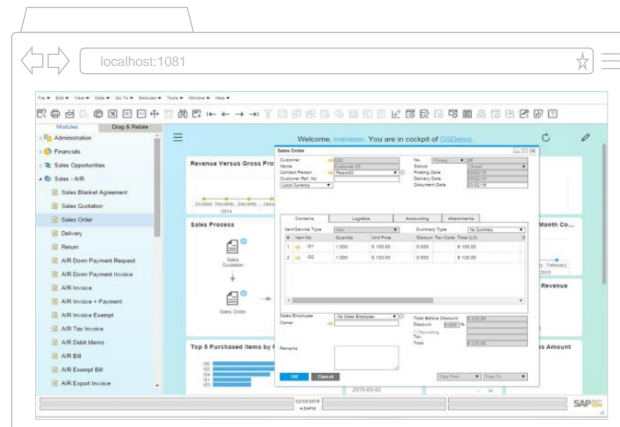
Top <i>Re</i> Solution	More Details
<p>Introducing browser-based access</p> <p><a href="#">EES Replay</a></p> 	<p>SAP Note <a href="#">2194215</a>, <a href="#">2194233</a></p>

# Introducing SAP Business One Cloud browser access

A new way to access SAP Business One



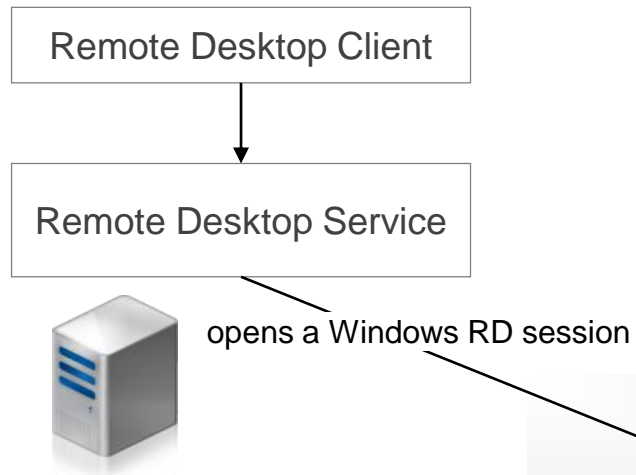
- Using only a browser a user can access SAP Business One
  - Available for SAP Business One Cloud
  - Firefox browser support



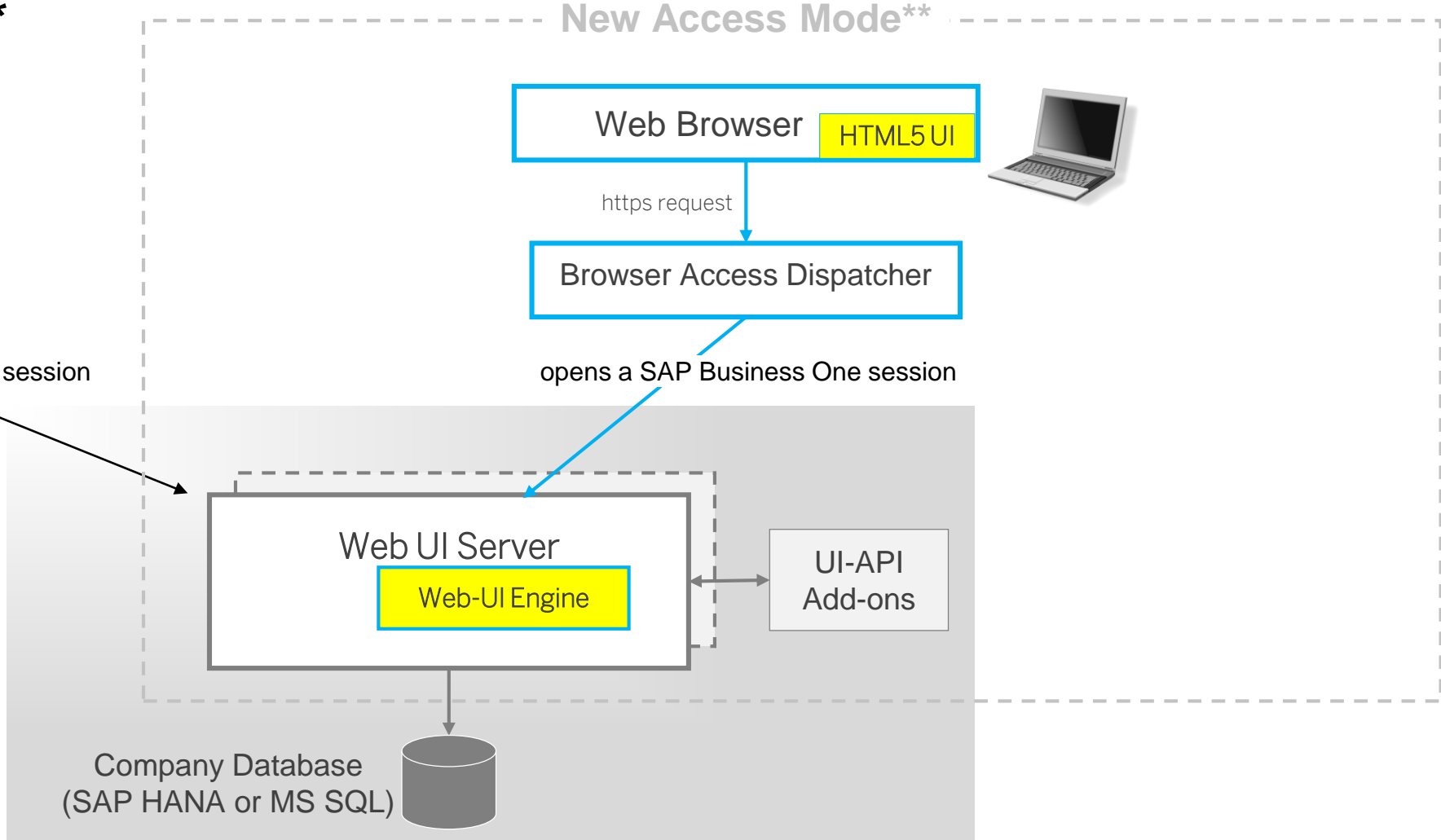
- Lower TCO
  - Microsoft Remote Desktop/Citrix licenses not required for majority of users
- Reduced partner maintenance effort
  - Reduced complexity
- Zero footprint SAP Business One
  - Use on any device with a compatible browser
  - Access securely from any location

# Hybrid infrastructure for browser access

## Existing Access Mode \*



## New Access Mode\*\*

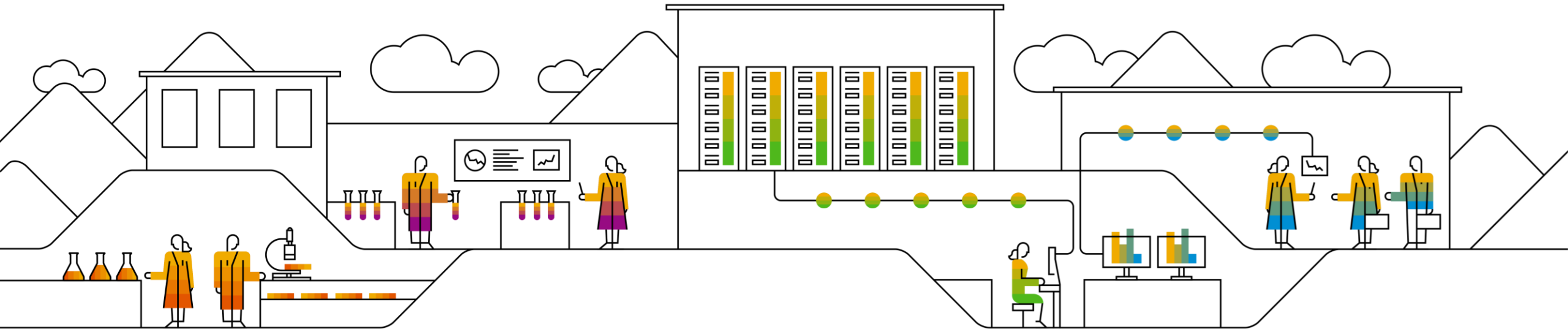


### Notes:

\*Required for some use cases where [limitations](#) exist

\*\*as of SAP Business One Cloud 1.1 PL05 & SAP Business One 9.1 PL08

# SAP Business One Cloud 1.1 PL4





# SAP Business One Cloud 1.1 PL04 - Overview Note [2142052](#)

Top <i>Re</i> Solution	More Details
SAP HANA Service Layer	SAP Note <a href="#">2157790</a>
Management of both MS SQL and SAP HANA within one patch	SAP Note <a href="#">2131693</a>