

CATT Tutorial: Easy Mode



HELP.BCCATTUT

Release 4.6B



Copyright

© Copyright 2000 SAP AG. All rights reserved.

No part of this brochure may be reproduced or transmitted in any form or for any purpose without the express permission of SAP AG. The information contained herein may be changed without prior notice.

Some software products marketed by SAP AG and its distributors contain proprietary software components of other software vendors.

Microsoft®, WINDOWS®, NT®, EXCEL®, Word® and SQL Server® are registered trademarks of Microsoft Corporation.

IBM®, DB2®, OS/2®, DB2/6000®, Parallel Sysplex®, MVS/ESA®, RS/6000®, AIX®, S/390®, AS/400®, OS/390®, and OS/400® are registered trademarks of IBM Corporation.

ORACLE® is a registered trademark of ORACLE Corporation, California, USA.

INFORMIX®-OnLine for SAP and Informix® Dynamic Server™ are registered trademarks of Informix Software Incorporated.

UNIX®, X/Open®, OSF/1®, and Motif® are registered trademarks of The Open Group.

HTML, DHTML, XML, XHTML are trademarks or registered trademarks of W3C®, World Wide Web Consortium, Laboratory for Computer Science NE43-358, Massachusetts Institute of Technology, 545 Technology Square, Cambridge, MA 02139.

JAVA® is a registered trademark of Sun Microsystems, Inc., 901 San Antonio Road, Palo Alto, CA 94303 USA.

JAVASCRIPT® is a registered trademark of Sun Microsystems, Inc., used under license for technology invented and implemented by Netscape.

SAP, SAP Logo, mySAP.com, mySAP.com Marketplace, mySAP.com Workplace, mySAP.com Business Scenarios, mySAP.com Application Hosting, WebFlow, R/2, R/3, RIVA, ABAP, SAP Business Workflow, SAP EarlyWatch, SAP ArchiveLink, BAPI, SAPPHIRE, Management Cockpit, SEM, are trademarks or registered trademarks of SAP AG in Germany and in several other countries all over the world. All other products mentioned are trademarks or registered trademarks of their respective companies.

Icons

Icon	Meaning
	Caution
	Example
	Note
	Recommendation
	Syntax
	Tip

Contents

CATT Tutorial: Easy Mode	5
Using This Tutorial	7
Create a CATT Test Case	9
Run Test Case in the Background	20
The CATT Test Plan Log	22
Put Comments in Test Cases	25
Insert Transaction.....	28
Display Transaction Screens.....	34
Run Test Case in the Foreground	36
Display Accounts.....	39
Define Chain	42
Create a Test Case On Your Own	47
Run Test Case in Display Errors Mode	48
Example: Test Case with Error Message	50
Delete Functions and Test Cases	52
Define and Perform Checks.....	55
Editing Variants	59
Einsatz von Varianten beim Ausführen eines Testfalles.....	64
Wiederherstellen des Systemzustandes	66

CATT Tutorial: Easy Mode

CATT – Computer Aided Test Tool

Testing a software system is an important but time and cost-intensive task – This is an SAP System component which helps you to considerably reduce testing time. This does not mean reducing the number of tests performed. The tracing and analysis of tests is simplified at the same time: Your testing productivity increases.

The tool with this functionality is in the Test Workbench with the Basis component *Computer Aided Test Tool (CATT)*. You now only have to develop and record a test for an SAP System transaction once and you can perform it whenever you need to.

Creating a test case for a transaction takes only a little longer than running the transaction once in the SAP System, because you run it in CATT which records your inputs with a transaction recorder. The recorded transactions are test cases. They are saved and can be (re)used for function and regression tests. When you perform tests, the recorded transaction actually runs and tests the system in the current configuration. CATT can run completely automatically, or you can retain control partially or completely. The result is a test log and the actual result of the transaction.

Test cases test individual transactions or whole business transactions. You can make test cases flexible by defining test case variants, replacing the values which you input. You can define transaction result tests whose results are also logged. CATT supports all your test activities.

The Tutorial

This tutorial helps you to learn to use CATT. It is intended for users who have little experience of the SAP System and for whom CATT is completely new. Experienced SAP System users can skip some details. Your growing experience of using CATT is taken into account: The parts of the tutorial build on earlier parts: Functions which have already been described in detail are shown in less detail later. The prerequisites for each section are stated at the start This helps you to restart if you have skipped some sections or want to repeat a section later.

Creating test cases in CATT is nearly as easy as running a transaction in the SAP System. You learn new functions for performing and analyzing tests, which help you to work more efficiently. The examples give you a quick insight into CATT which you can develop further later. If a task has various possible solutions, only one is shown initially; you can learn alternatives later when the task arises again.

You work through an integrated scenario to get to know the CATT functions. You need two to four hours to work through the tutorial, depending on your experience and whether you work through it one go or in several sittings.

Learning targets: Each target is achieved in its own section.

You learn:


- to create a test case in which you create a *One-time customer account* in a first transaction.
- run a test case in the background.
- analyze the CATT log.
- insert a comment for a transaction.

CATT Tutorial: Easy Mode

- add a second transaction to the test case. link the two transactions.
- display the screens of a transaction.
- run a test case in the foreground.
- create your own test case and test what you have learnt in your own example.
- run a test case in *Display errors* mode.
- delete functions and transactions.
- define and perform an input field value check.
- create a test case variant.

At the end, you restore the previous system status.



You can return to the beginning at any time by repeatedly going *Back*  or with the transaction code **SCEM** in the command field.

Using This Tutorial

Prerequisites

For all parts of the tutorial:

1. You have SAP System authorization.
2. CATT version 4.6 B is installed.



Have your System administrator assign you the *Activity group* `SAP_BC_CAT_QUALITY_MANAGER`. This authorizes you to use CATT.



The test case name is context-dependent: in the customer namespace it must start with Y or Z. Your System administrator will be able to help you.

Security





You enter data into the System in these exercises which would be potentially harmful to business procedures at the wrong location. Ensure that you enter the data at the right location in your System: you should clarify this before logging on to the System. Ask your System administrator for help.

Abbreviations and Tips

This table will help you in this tutorial. It explains marks which are always used in the same way in the text.

Text marking	Meaning
→	Menu step.
<i>Italics</i>	Program interface label or name.
This font	Entries you must make.

Using This Tutorial

Mouse click and double-click (or click and double-click)	The left-hand key of a normally-configured mouse. Use of the right-hand key is explicitly stated.
Pushbutton with a tick e.g.  or 	The same function as the Enter or Return key.
(Text)	Parentheses indicate explanations in the text. Experienced SAP System users will often not need them.
• Bullets	Indicate your activities in the tutorial. Bullets are omitted in tips, notes and prerequisites.



Choose *Extras* → *Settings* → *Display technical names* in the menu

Show technical name : The function codes are displayed (as the following graphic shows). You learn frequently-used codes quickly



Favorites You can put CATT in your Favorites as you will be using it frequently. You can start CATT from this list by double-click.

Choose *CATT* in the menu tree by mouse click.

Choose *Favorites* → *Add* in the menu.

CATT appears in blue in the *Favorites* folder in the menu tree.

If you no longer need a favorite, delete it by selecting it with the mouse (the name has a yellow background) and choosing *Favorites* → *Delete* in the menu. This is not dangerous, only links to programs are deleted, not the programs themselves.

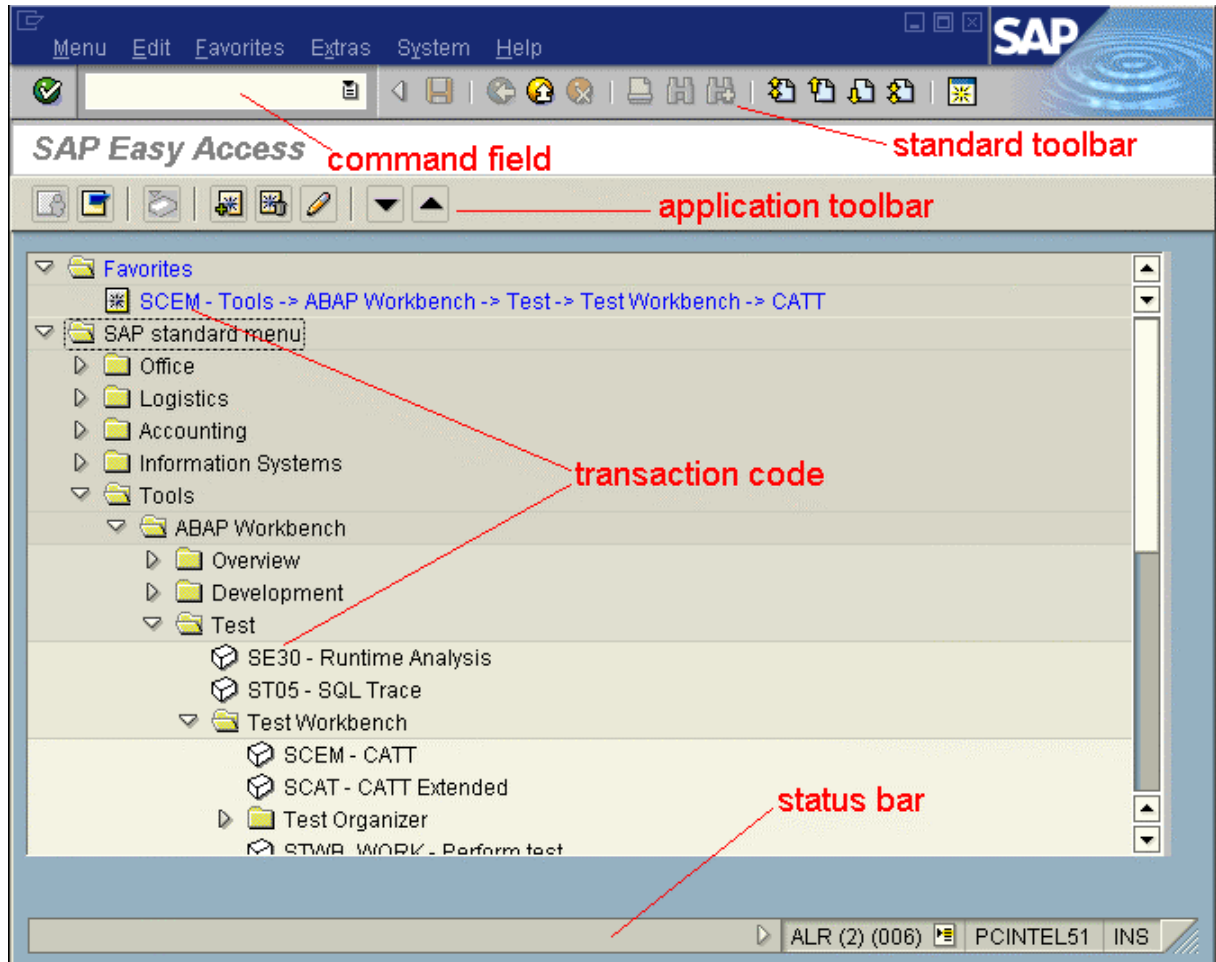
Create a CATT Test Case

Use

You learn to start CATT and record a transaction. This transaction is your first test case.

Prerequisites

You are logged on to the SAP System. You see the following screen:




SAP Easy Access. (The red labels have been added for your orientation.)

Procedure

- Put the cursor on the command field of the *SAP Easy Access* initial screen. It is to the left of the *Standard toolbar*.

Create a CATT Test Case

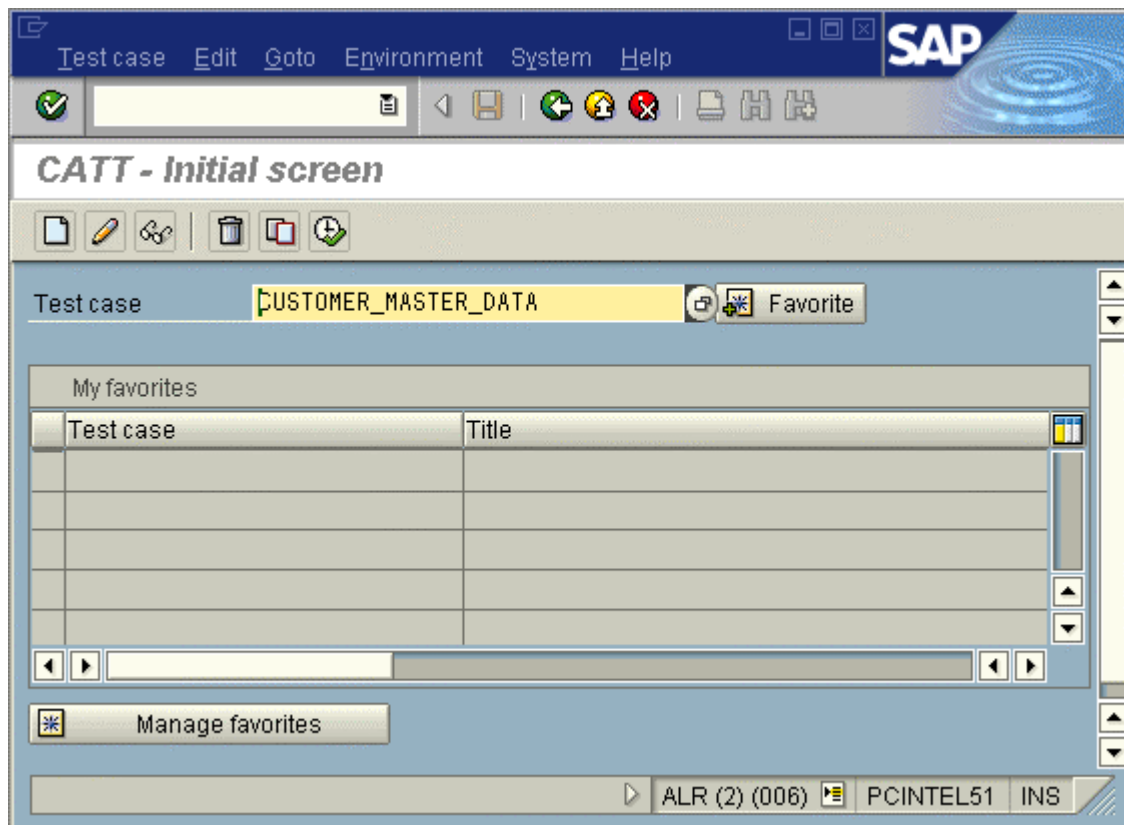


If the command field is not visible, open it by clicking on the small arrow to the right of the *Enter* pushbutton  (the *Enter* pushbutton is also in the standard toolbar). The system opens the command field, and the arrow to close it is now to its right.

- Enter the transaction code `SCEM` and
- confirm your entry with *Enter* to start CATT.

The CATT Initial Screen

You are now in the *CATT initial screen*:




CATT initial screen: The name of the new test case is already present. If you are in customer namespace, you must change the test case name to `Y_DEBITOR_STAMMDATEN` or `Z_DEBITOR_STAMMDATEN`.

- Put the cursor in the *Test case* input field to create your test case.

Create a CATT Test Case



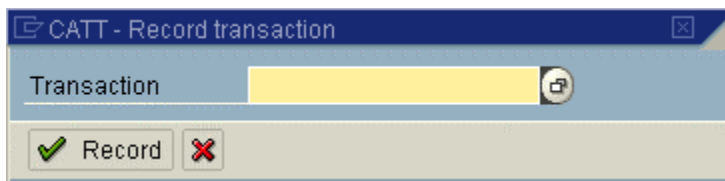
Name the test case according to your environment: in customer namespace it must start with Y or Z: for example Y_DEBITOR_STAMMDATEN. This name then applies in all subsequent screens.

- Type the name: **Customer_master_data**. (You can correct incorrect or existing entries with the usual text entry functions).
- Click on the *Create* pushbutton  in the *Application toolbar*.




If the system says that the name already exists, extend it by a few letters. Use your initials separated from the rest of the name by underscore, e.g. **Customer_master_data_WH**.

The following dialog box appears:



CATT - Record transaction.

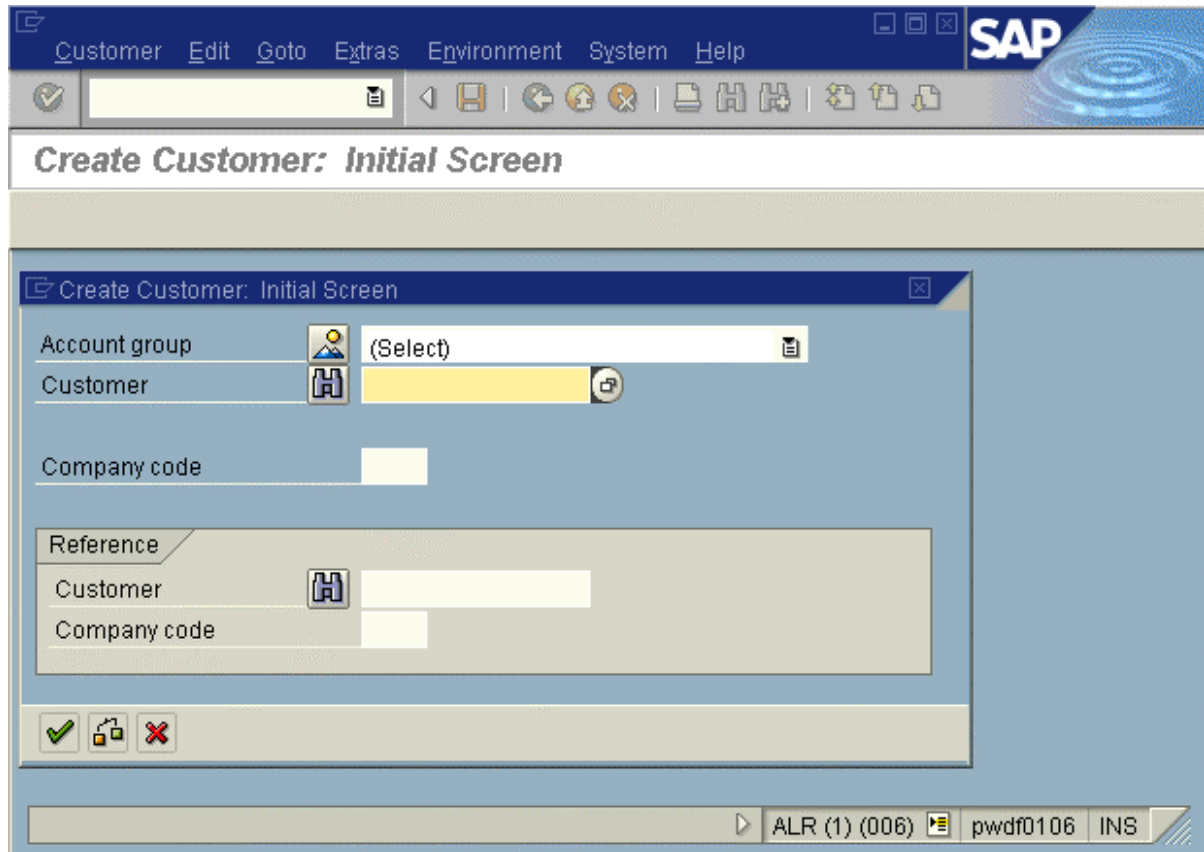
- Enter the transaction code **FD01** (for the transaction: *Customer: Create master data*) in the *Transaction* input field, and
- confirm your entries with the *Record* pushbutton .





The *Cancel* pushbutton  cancels started actions.


The following screen appears:

Create a CATT Test Case



Create customer: Initial screen. At least the *Account group* field must be filled.

- Open the selection list in the *Account group* input field by choosing the  pushbutton at the end of the field.
- Choose *One-time customers (int. no. ass.)*.
- Put the cursor in the *customer* input field.
- Enter **space**. (This is necessary to define the field value as a variable for which the system can assign the numbers internally; you cannot enter a number in internal number assignment).
- confirm your entries with the *Continue* pushbutton .

The System records the screen (shown by the clock symbol  and the message in the status bar) and shows the following screen with empty input fields:

The screenshot shows the SAP 'Create Customer: General data' dialog box. The 'Name' field is filled with 'NeoTec AG'. The 'Search term 1/2' field has a checkmark in a small box, indicating it is a required field. The 'Language' field is set to 'English'. The status bar at the bottom shows an error message: 'Make an entry in all required fields'.

Create customer: General data Address. The name has already been entered.

- Enter **NeoTec AG** in the *Name* input field.
- Go to the *Search term 1/2* input field by choosing Tab twice.



This is a *Required field*, indicated by ; if it is not filled, the system does not continue with the transaction, it reports the error: You must then fill the field.

Create a CATT Test Case

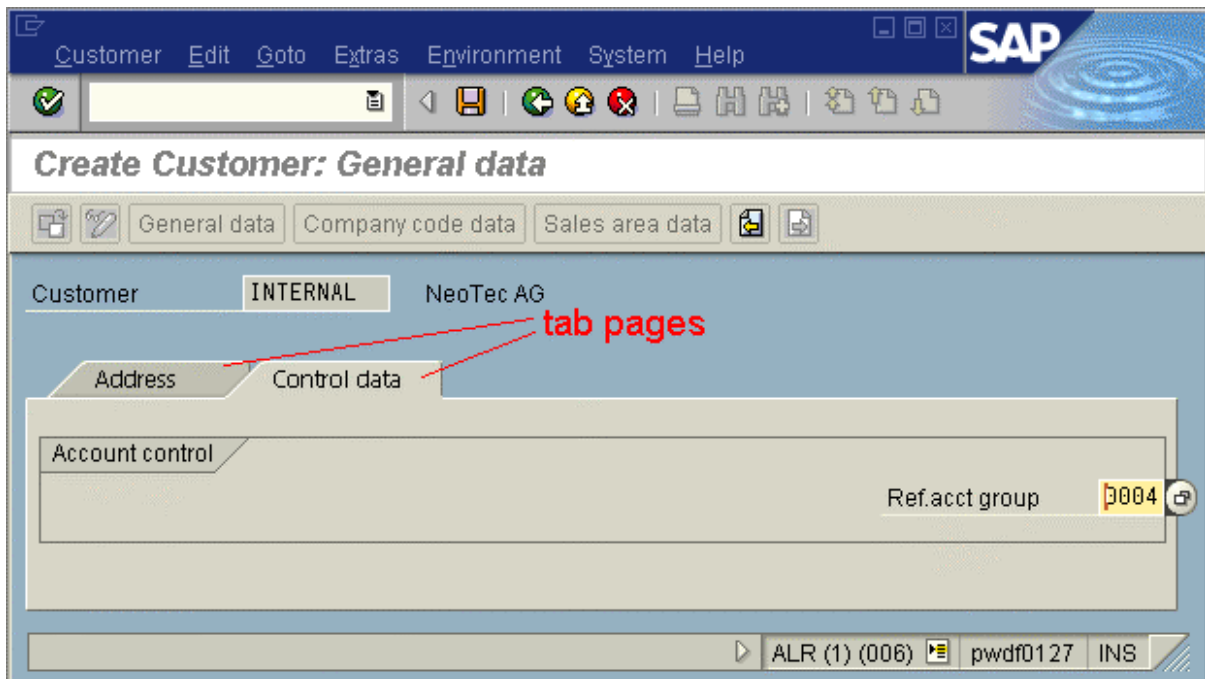
- Enter `Capacitors` in the *Search term* input field.
- Go to the *Country* input field with Tab.
- Enter `en` in the *Country* input field.



The system has already set the language to *English*. The entries in many fields appear automatically in upper-case.


- Go to the next screen by choosing the *Control data* tab (see graphic).

The system records the transaction (indicated by the clock symbol and the message in the status bar) and goes to the following screen:

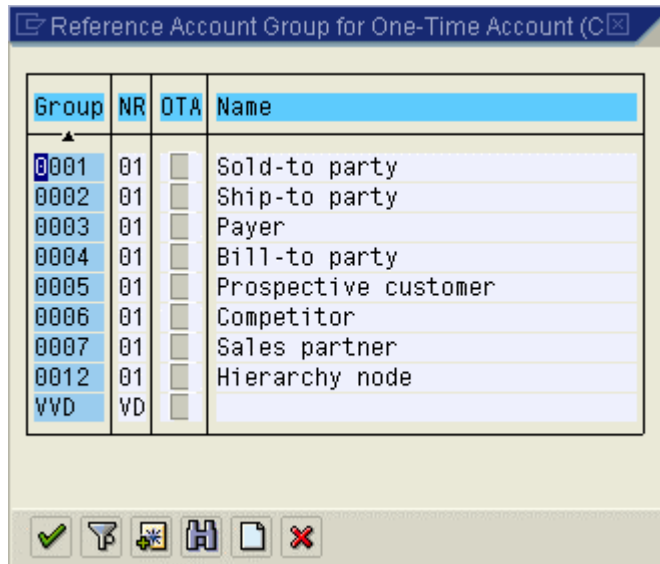


Create customer: General data. Control data. The *Control data* tab and the *Wahl der Ref.acct group* have already been selected.

You must now specify a *Ref.acct group*. Only certain keys are valid. The system refuses any others.

- Choose the  pushbutton at the end of the input field for the list of valid *Ref.acct groups*.


You go to the following dialog box:



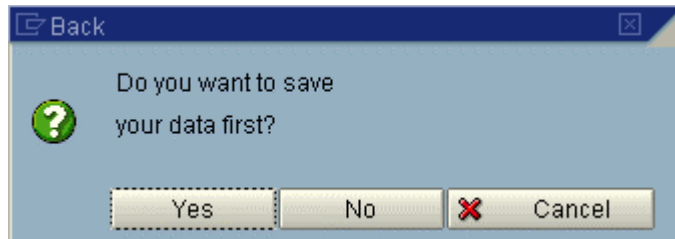
List of *Reference account groups for one-time accounts*

- Choose *0004 Bill-to party*.

The system accepts your selection and closes the dialog box.

- Go back to the editor with *Back* .

The system records the screen and goes to the Editor screen and displays the following dialog box:

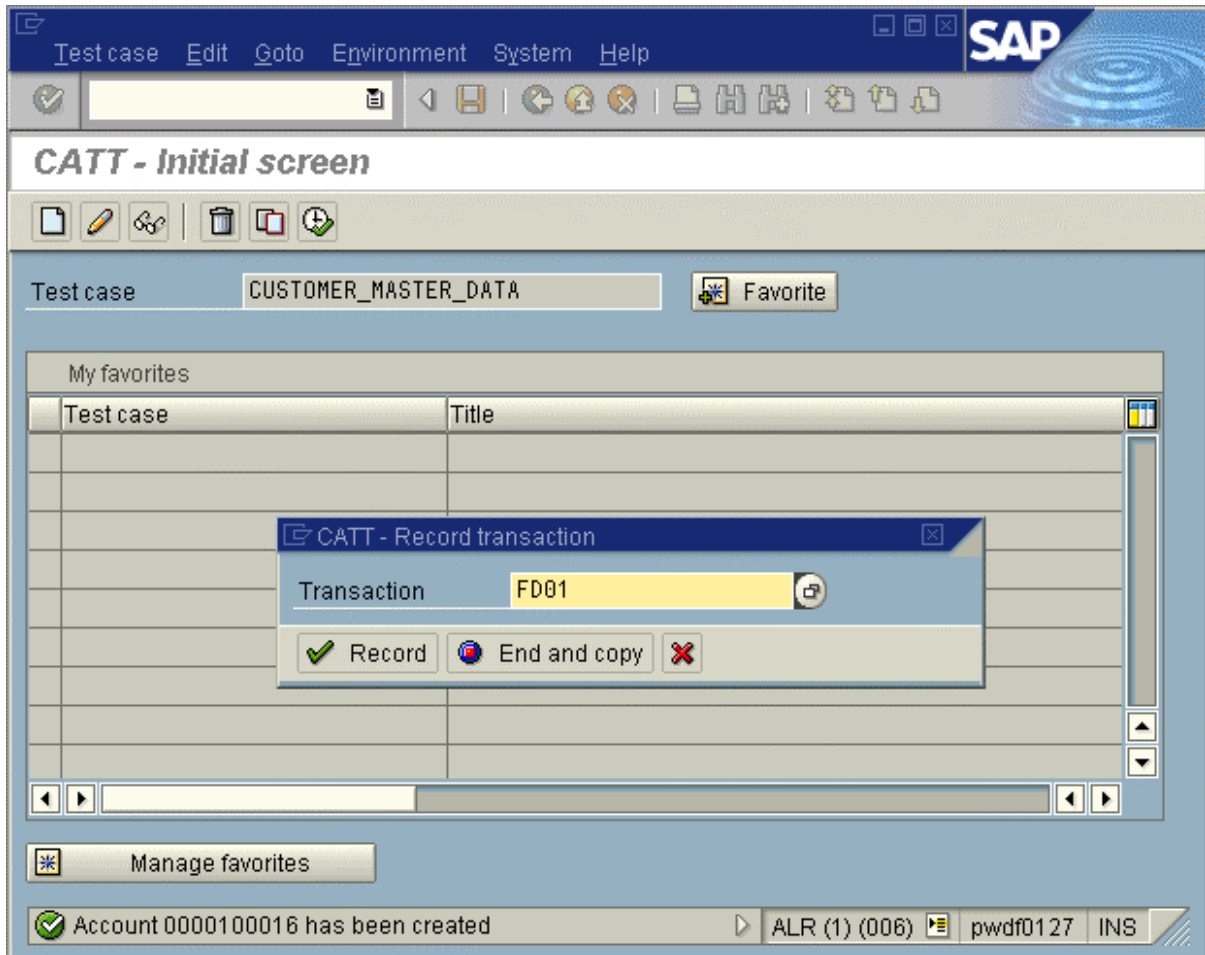


Back: Data save dialog box

- Confirm your entries with *Yes*.

The system records the *Customer Master data* test case and displays the *CATT initial screen* with the *End and Copy* dialog box:

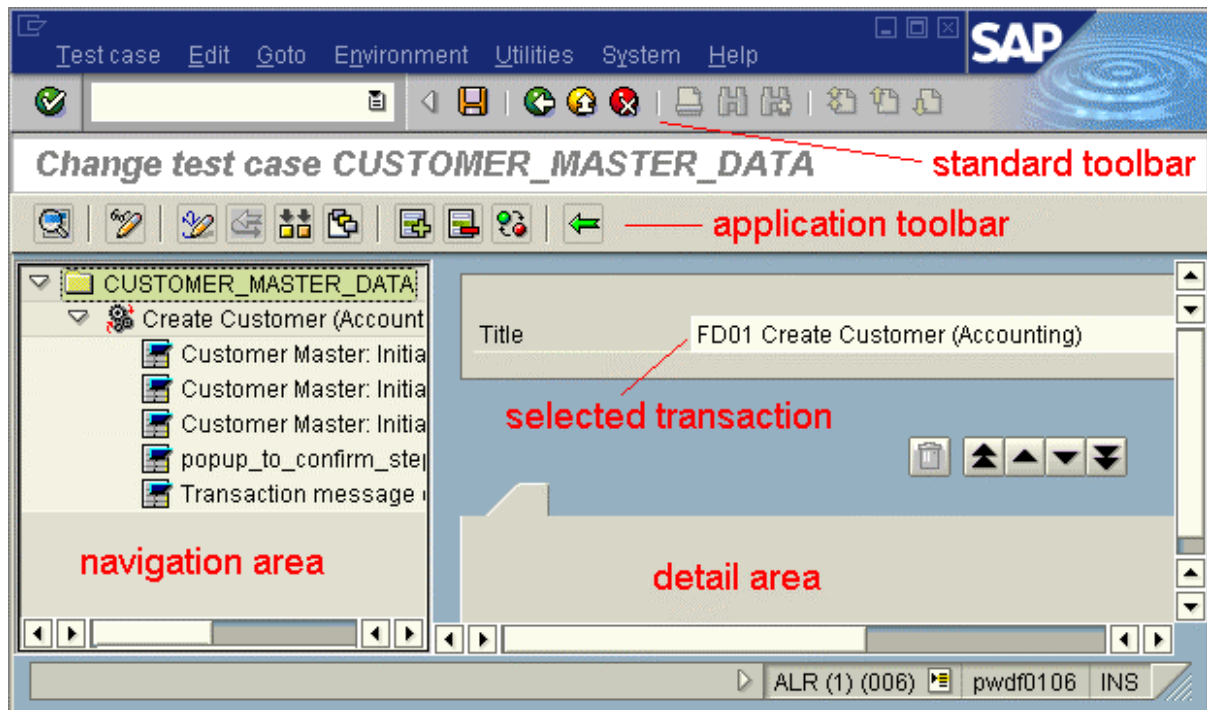
Create a CATT Test Case



CATT initial screen with *End and copy* or *Record transaction* dialog box.




- Choose End and copy.

You go to:



Editor: *Change test case CUSTOMER_MASTER_DATA*.

The editor *navigation area* is to the left of the screen. This contains

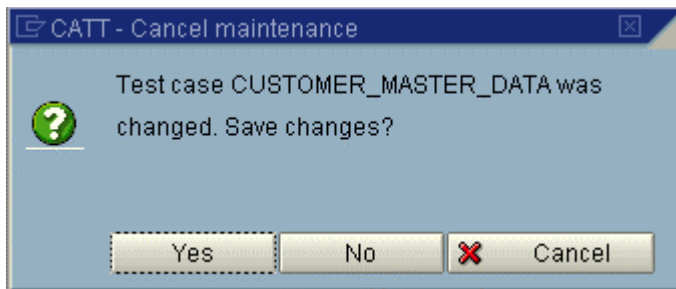
- the current test case  `DEBITOR_STAMMDATEN`,
- its transaction  `Anlegen Debitor` and
- its screens which you have recorded, e.g.  `Nachricht aus Transaktion`.

You can show and hide the test case and transaction contents by clicking on the triangle to the right of them.

Other elements, such as transactions, screens and commentars can be added when you enhance the test case. If you Sie select a screen in the navigation area, it is displayed in the *Detail view area*.

- Choose *Back*  in the standard toolbar.

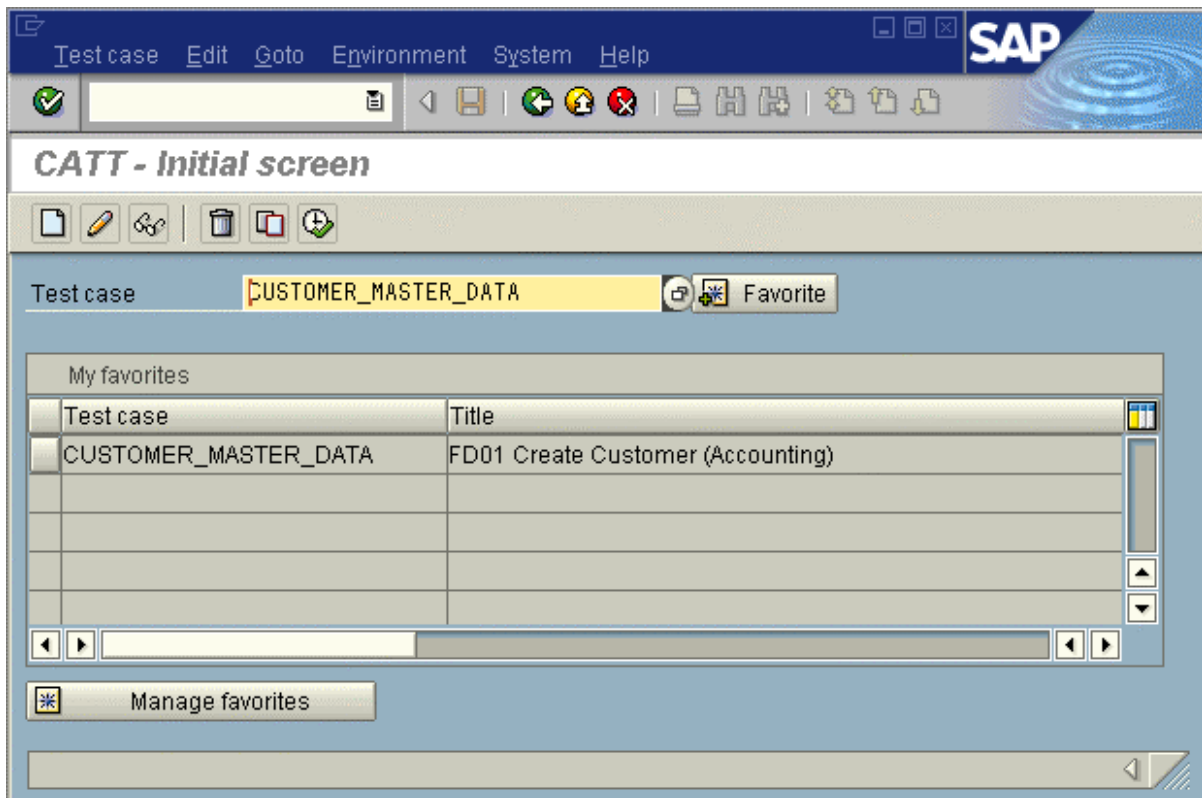
You go to the following dialog box:

Create a CATT Test Case

CATT - Cancel maintenance: Save first?

- Confirm save with Yes.

The system saves the test case and goes back to the *CATT initial screen*:



CATT initial screen: The newly-created test CUSTOMER_MASTER_DATA appears in My favorites

Congratulations! When this screen appears, you have successfully recorded your first test case.

Result

You are in the CATT initial screen. Your test case has been created.

You have now already learnt some basic CATT skills: You can call CATT from *SAP Easy Access* – CATT can also be in your Favorites and is accessible quickly.

You have seen how CATT goes to the desired transaction when you create a test case. It is performed as usual, CATT stays in the background and records the procedure – it is only visible in messages in the status bar. You go back to the CATT screens when you end and save the recording.

The next section describes how to change the customer account which you have created. You learn more about the CATT editor, and end this section by linking your first test case and the second one, which you create in this next section.

Run Test Case in the Background

Run Test Case in the *Background*


Use

You run the test case in this section. The test result is logged: This is the point of the test case.

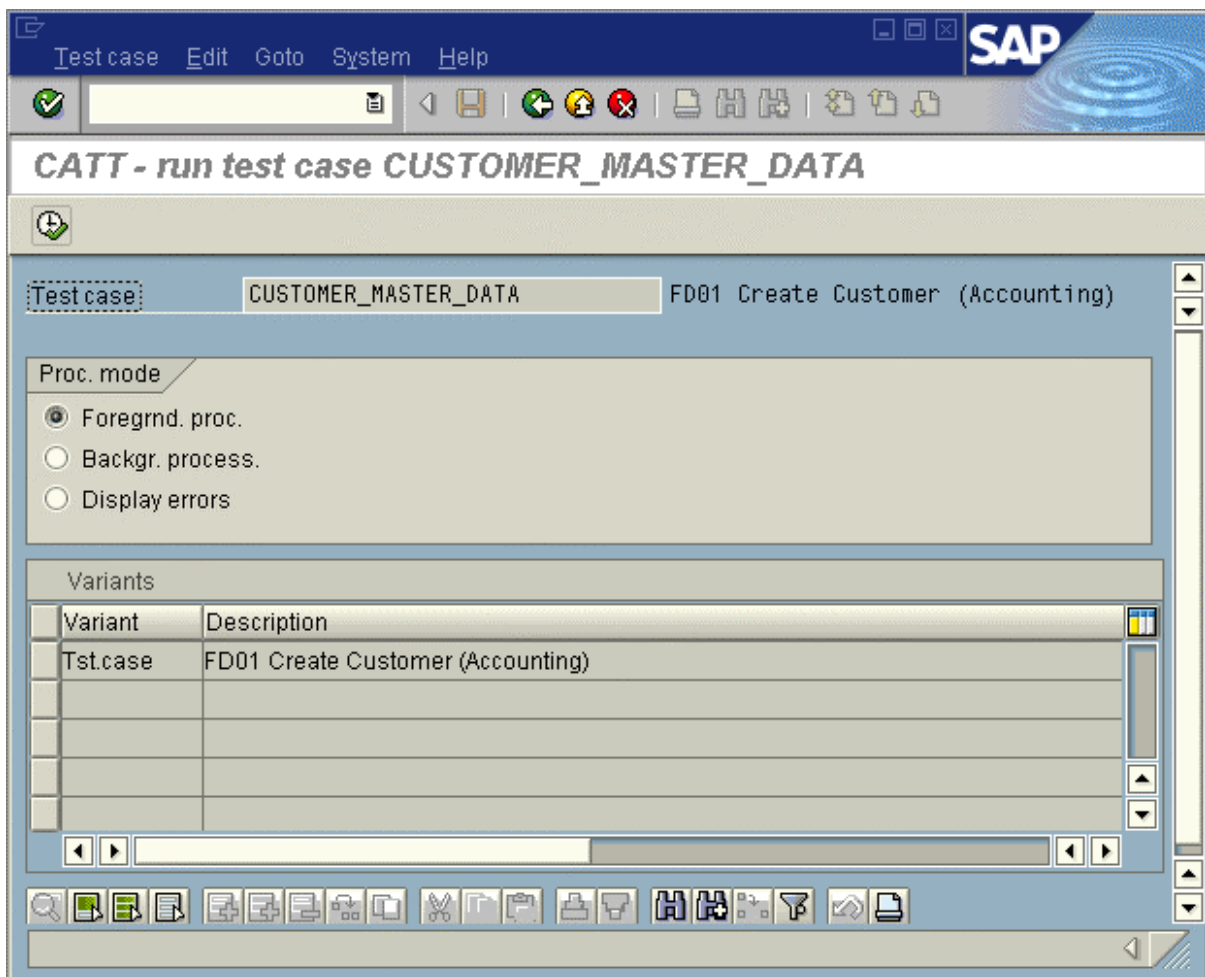
Prerequisites

You are in the CATT initial screen. If you have left it after the first lesson, start it again. Your test case *Customer_Master_data* is now in your des CATT favorites.

Procedure


- Choose your test case in the favorites.
- Choose *Execute*  in the *Application toolbar*.

You go to:



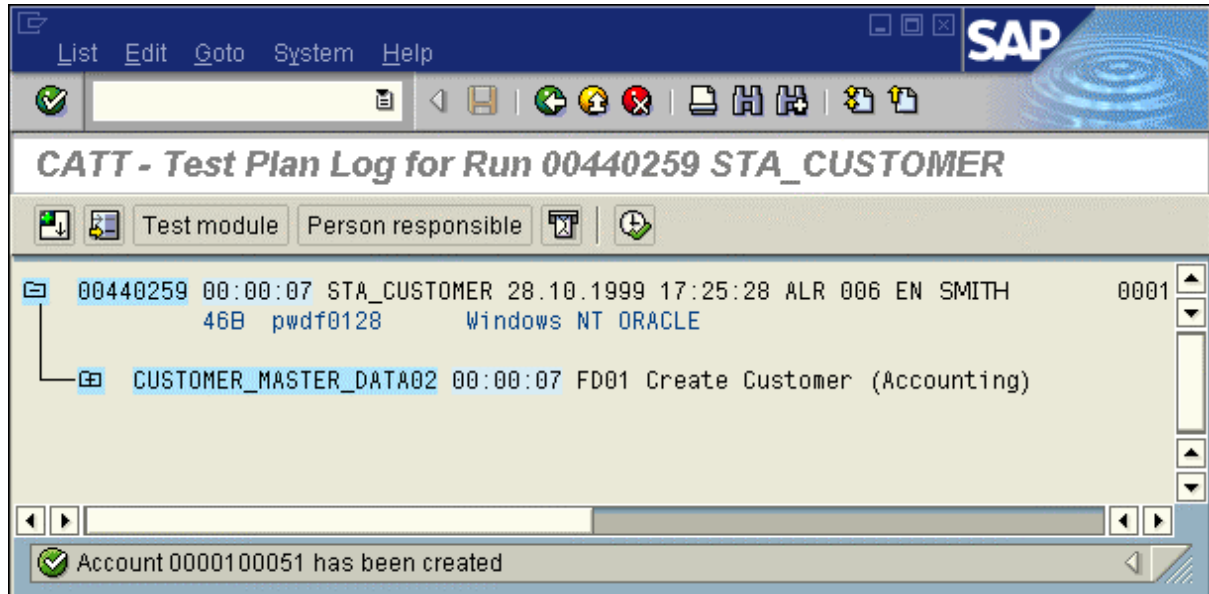
Run Test Case in the Background


CATT- run test case *Customer_Master_data*.

- Choose *Background process*.
- Choose *Execute*  in the *Application toolbar*.

The test case runs. The transaction running is shown in the status bar.

The system creates a log and displays the following screen; the message *Account number 0000100116 created* (the number can be different) appears in the status bar:



CATT – Test plan log for run 00619411 STA_Customer: Okay  in the status bar indicates that the test case ran successfully.

Result

You have now run your test case. A log was created.

Stay in this screen to analyze the log. The other processing modes are discussed later.

The CATT Test Plan Log

The CATT Test Plan Log

Use

As you saw in the last section, CATT automatically creates a log when a test case runs. This section explains how to analyze a log.

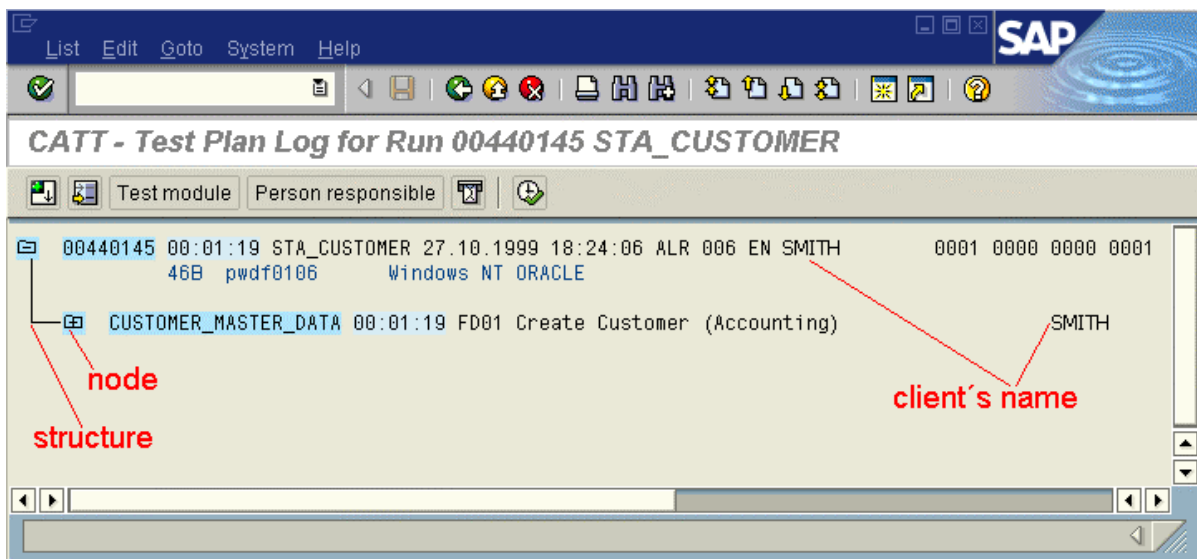
The most important information is already in the status bar; whether the test ran successfully. Further details become interesting when errors occur.

Prerequisites

You have run your test and you are in the *CATT-Test plan log* screen. If you left CATT after the last lesson, run the test case again.

Procedure

You are introduced to some elements of the log: The last section ended with a log. You see the following screen:



CATT – Test plan log for run 00619411STA_CUSTOMER (the number can differ).

- Expand the log structure by clicking on the nodes sequentially (a node often contains other nodes).



To expand the entire structure, choose *F5*. To expand selected nodes, start at the bottom: this reduces scrolling.

You go to:

The screenshot shows the SAP CATT Test Plan Log for Run 00440145 STA_CUSTOMER. The log is displayed in a tree view within a SAP window. The main header reads "CATT - Test Plan Log for Run 00440145 STA_CUSTOMER". Below the header, there are several test steps and their associated data. Red annotations are used to highlight specific parts of the log:

- input fields:** Points to the data for the step "SAPMF02D 7105 Customer Master: Initial Screen Create RF View". The data includes:
 - BDC_CURSOR = RF02D-KUNNR
 - BDC_OKCODE = =ENTR
 - RF02D-KTOKD = CPD
 - RF02D-KUNNR = ' '
- screens:** Points to the data for the step "SAPMF02D 7000 Customer Master: Initial Screen Tabs". The data includes:
 - BDC_OKCODE = =TAB02
 - BDC_SUBSCR = SAPMF02D 7001 SUBKOPF
 - BDC_SUBSCR = SAPLATAB 0100 SUBTAB
 - BDC_SUBSCR = SAPLATAB 0201 SUBSC
 - BDC_SUBSCR = SAPMF02D 7111 AREA1
 - BDC_SUBSCR = SAPLSZA1 0300 ADDRESS
 - BDC_SUBSCR = SAPLSZA1 0301 COUNTRY_SCREEN
 - BDC_CURSOR = ADDR1_DATA-COUNTRY
 - ADDR1_DATA-NAME1 = NeoTec AG
 - ADDR1_DATA-SORT1 = CAPACITORS
 - ADDR1_DATA-COUNTRY = GB
- message:** Points to the data for the step "SAPMSCEM 0001 Transaction message". The data includes:
 - BDC_OKCODE = =YES

CATT – Test plan log. All screens and input fields in the test case were recorded. The input fields show the values assigned.

Analyzing the Test Plan Log

The test plan log header contains the execution client, date, time, and the platform.

The CATT Test Plan Log

The test plan log is structured hierarchically like the test plan used. It shows the test case used in the first level. The transactions called, the screens used and the entries, outputs and checks in these screens are listed below.

If the run was successful, no nodes are red.

- Go back to the *CATT initial screen* with *Back* (twice).

Result

You have now analyzed your test run log and are in the *CATT initial screen*.

Put Comments in Test Cases

Use

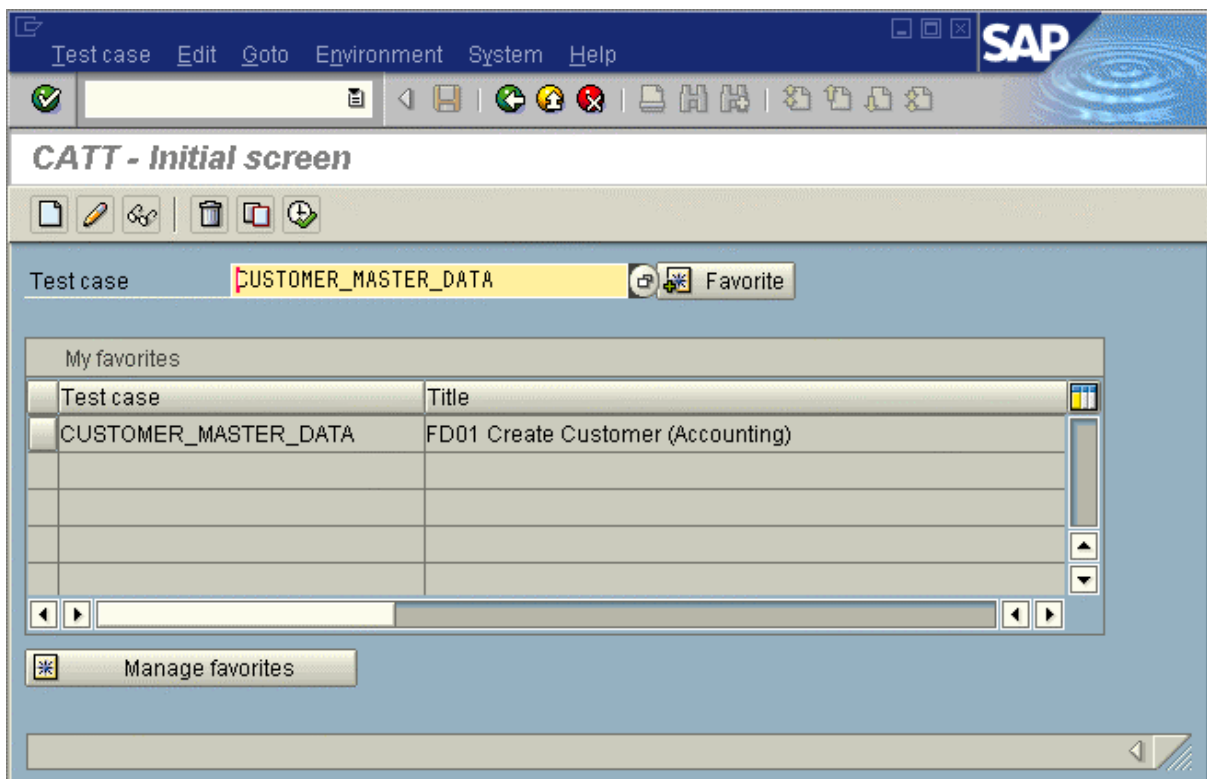
You can put comments in test cases to explain your intentions to the tester.

Prerequisites


You are in the *CATT initial screen*. If you have left CATT, start it again.

Procedure

You see the following screen:

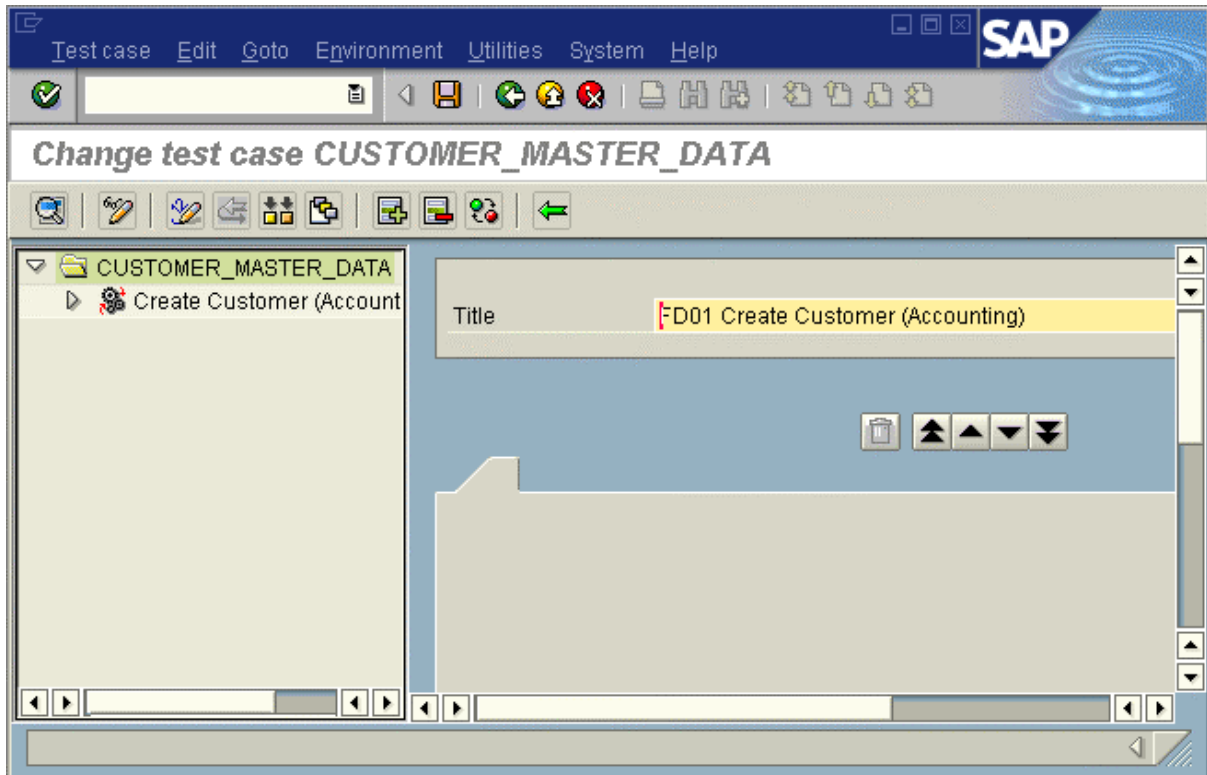


CATT initial screen: Your test case is shown in the Favorites.

- Go to the Editor with *Change*  in the *Application toolbar*.

You go to:

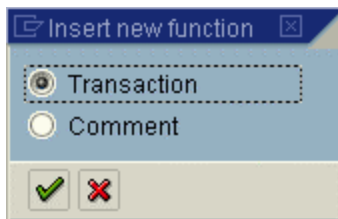
Put Comments in Test Cases




CATT Editor: Change test case CUSTOMER_MASTER_DATA

- Choose *Insert new function*  in the *Application toolbar*.

The following dialog box appears:

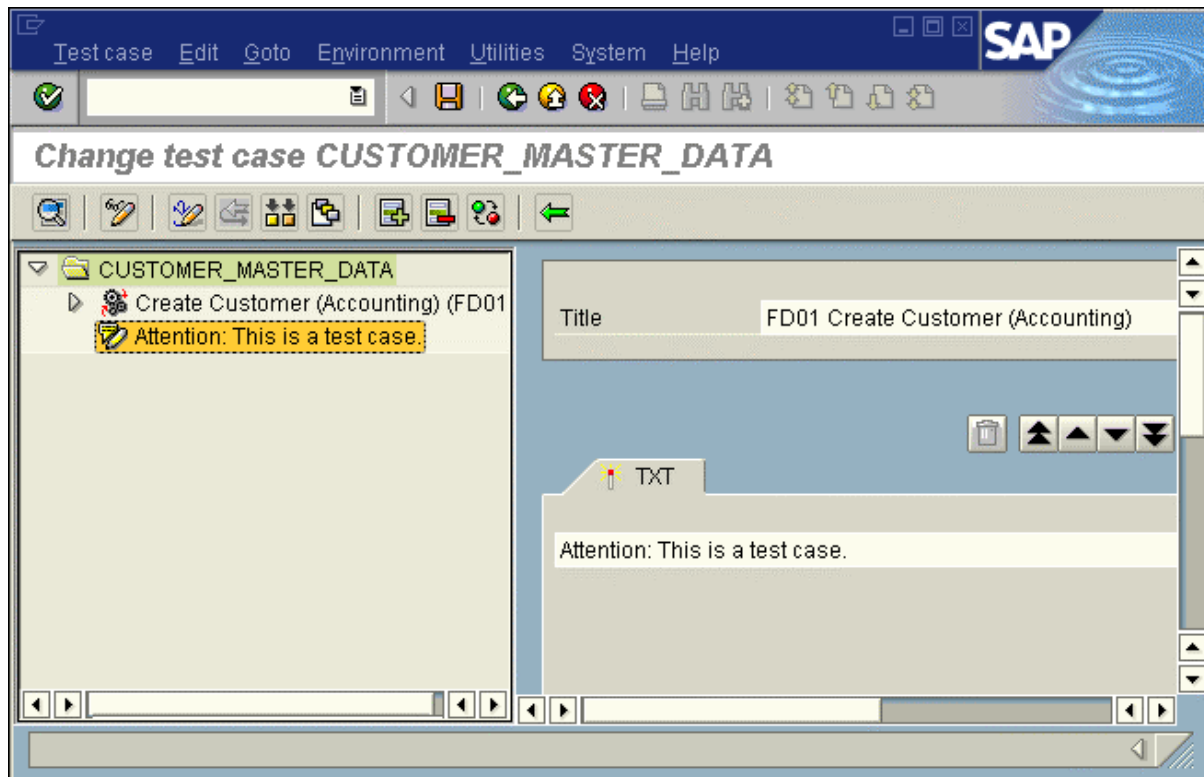


Insert new function: Choose between comment and transaction


- Choose *Comment*.
- Confirm your selection with *Continue* .

You go to:

Put Comments in Test Cases



CATT Editor: Change test case CUSTOMER_MASTER_DATA. The entry has already been made here and put in the test case.

The cursor is in the comment input field. The comment symbol  is visible in the navigation area.

- Enter the following text: **Attention: This is a test case.**
- Confirm your entry with *Enter* to put the comment in the test case.
- Go back to the CATT *initial screen* with *Back*.
- Confirm the save confirmation prompt.

Result

You are back in the CATT *initial screen*; the comment is in your test case.

Insert Transaction

Insert Transaction

Use


The test case which you have created checks the behaviour of the SAP System in a transaction. Business processes usually comprise a chain of transactions. You can enhance existing test cases.

Assume that the customer whose account you have created, has changed from being a Bill-to party to being a Sales partner. You change the number of the one-time customer account accordingly. You put this transaction in the existing CATT test case so that you can check whether both transactions run correctly, in a test case at any time.

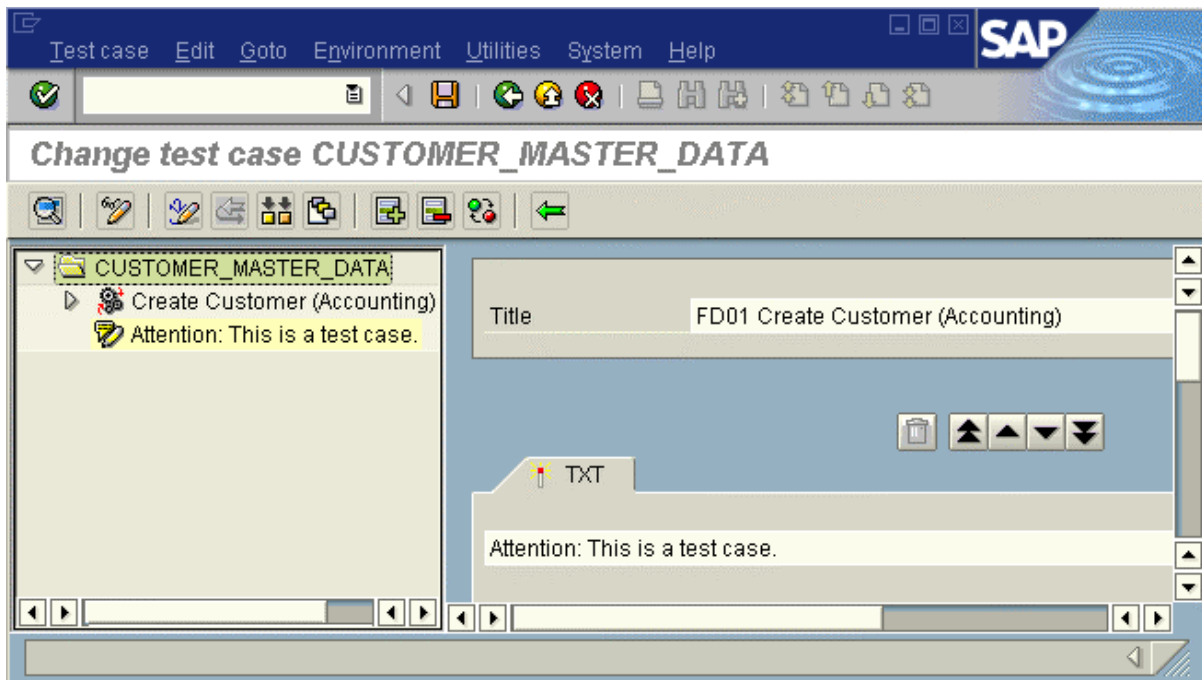
Prerequisites

Your test case has been created. You are in the CATT initial screen. If you have left CATT, go back to it.

Procedure


- Choose (poss. with your enhancement).
- Go to the Editor in change mode with *Change*  in the *Application toolbar*.

You go to:



Editor: *Change test case Customer Master data.*

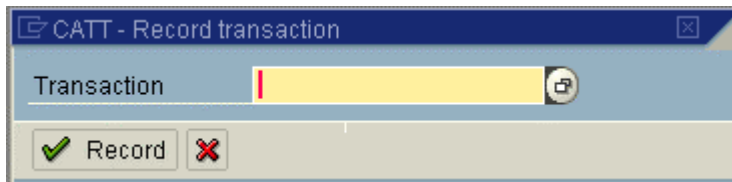
Insert Transaction

- Insert a new transaction with *Insert new function*  in the *Application toolbar*.

A dialog box, which asks you whether a transaction or a comment is to be inserted, appears: *Transaction* is the default.

- Confirm that you want to insert a transaction with *Continue*.

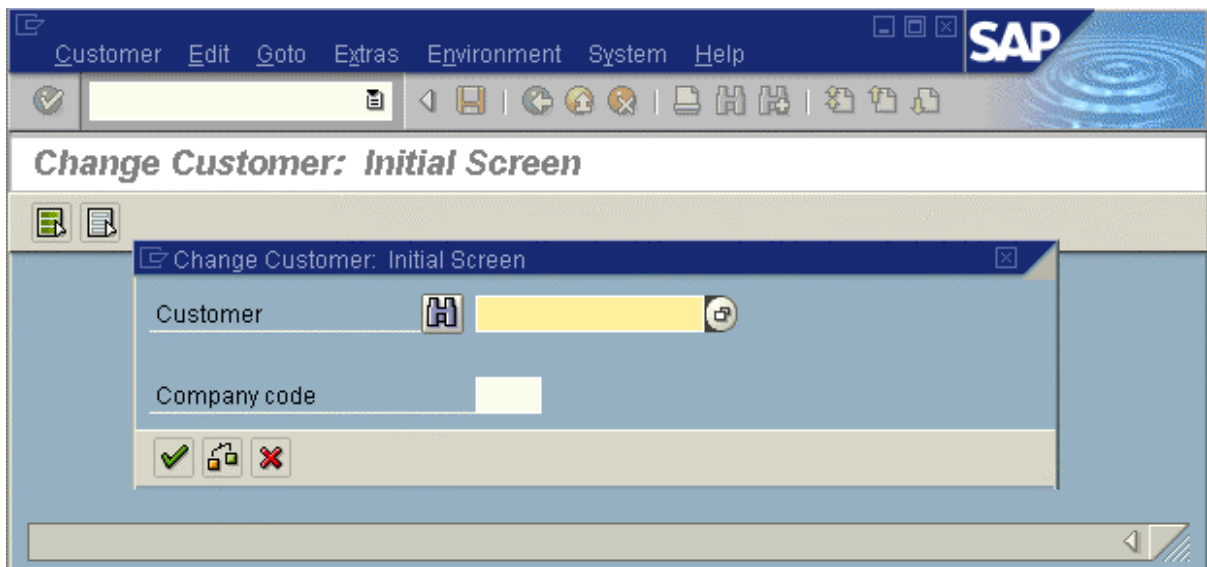
You go to the following dialog box:



CATT - Record transaction.

- Enter `fd02` (Change customer (Accounting))
- Confirm your entries with *Enter*


The following screen appears:



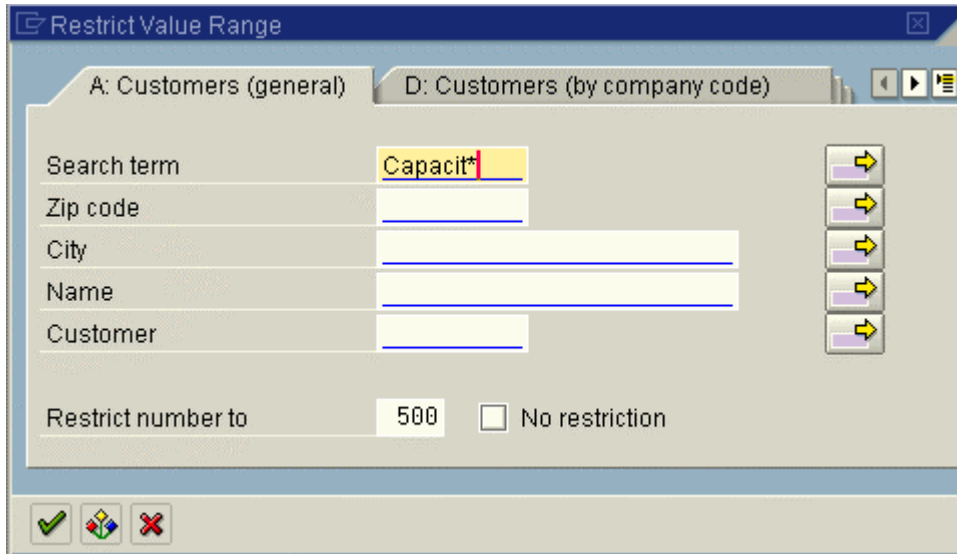
Change customer: Initial screen

As you will probably not know the customer account number for the *Customer* input field, it must be found in the SAP System. This is done with a [Database query] in transaction *FD02*.

Insert Transaction

- Click on the pushbutton after the *Customer* input field  to choose a Ref.acct group. (This goes to a search function with which you can find the customer account number which you need here.)

You go to the following screen:



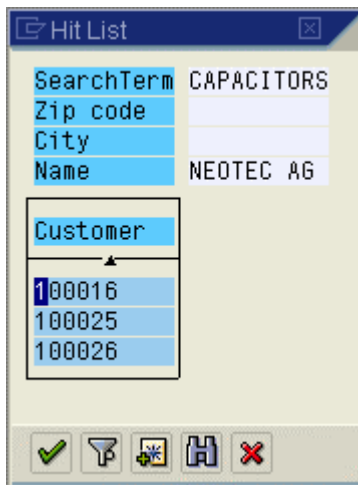
Restrict value range. The restriction has already been made here.

- Enter *Capacit** in the *Search term* input field
- Confirm your entries with *Enter*.



The asterisk at the end of the incomplete search term is a wildcard. Wildcards simplify database searches

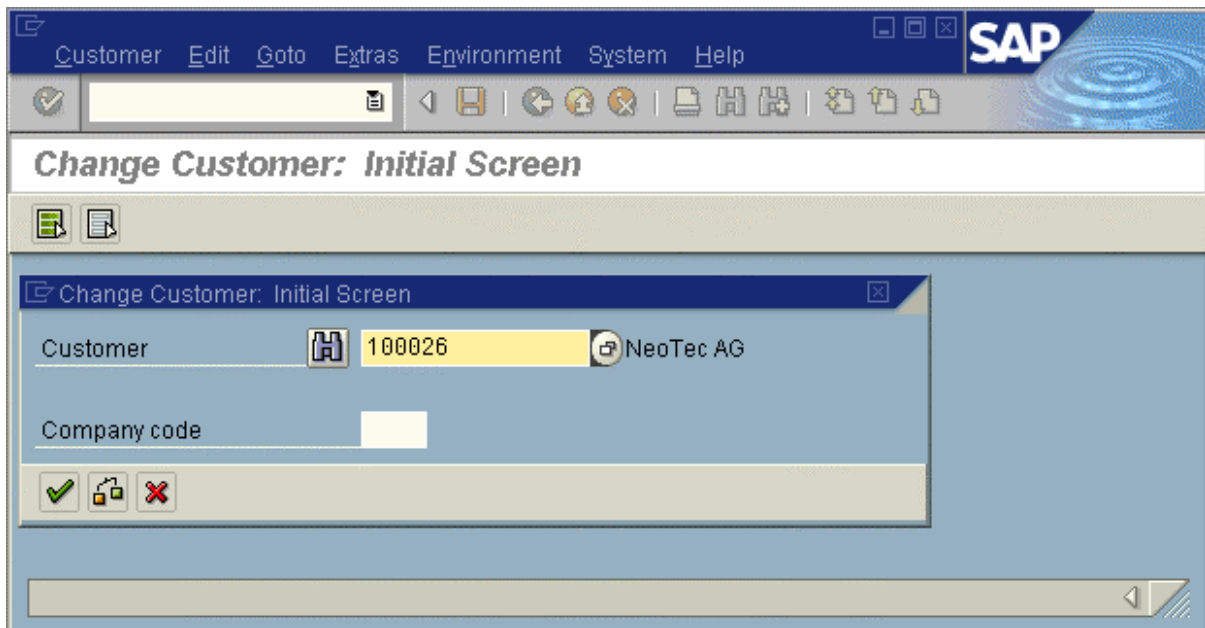
The following list appears:



List: *Customer account number*. Three accounts have been created for NeoTec AG because the test case has run three times – which may also be the case for you.

- Choose a number.

You go to the following screen:

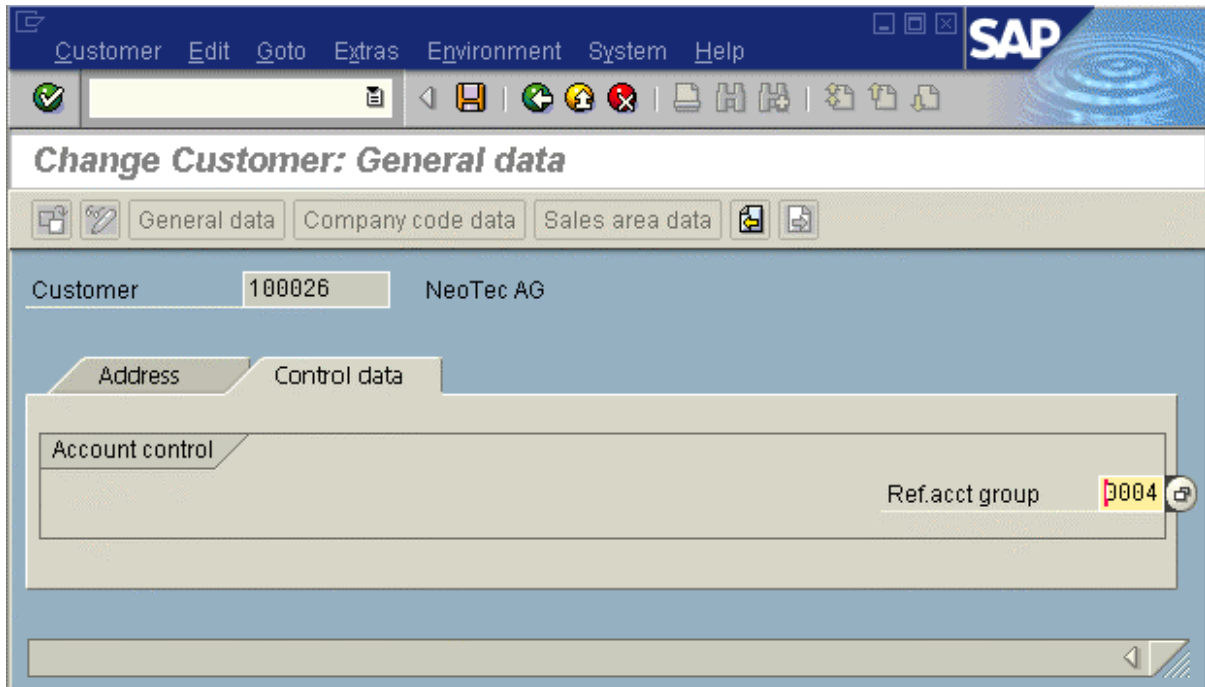


Change customer: Initial screen The customer account number is entered.

- Confirm your entries with *Enter*

You go to:

Insert Transaction



Change customer: General data. The *Control data* tab has already been selected

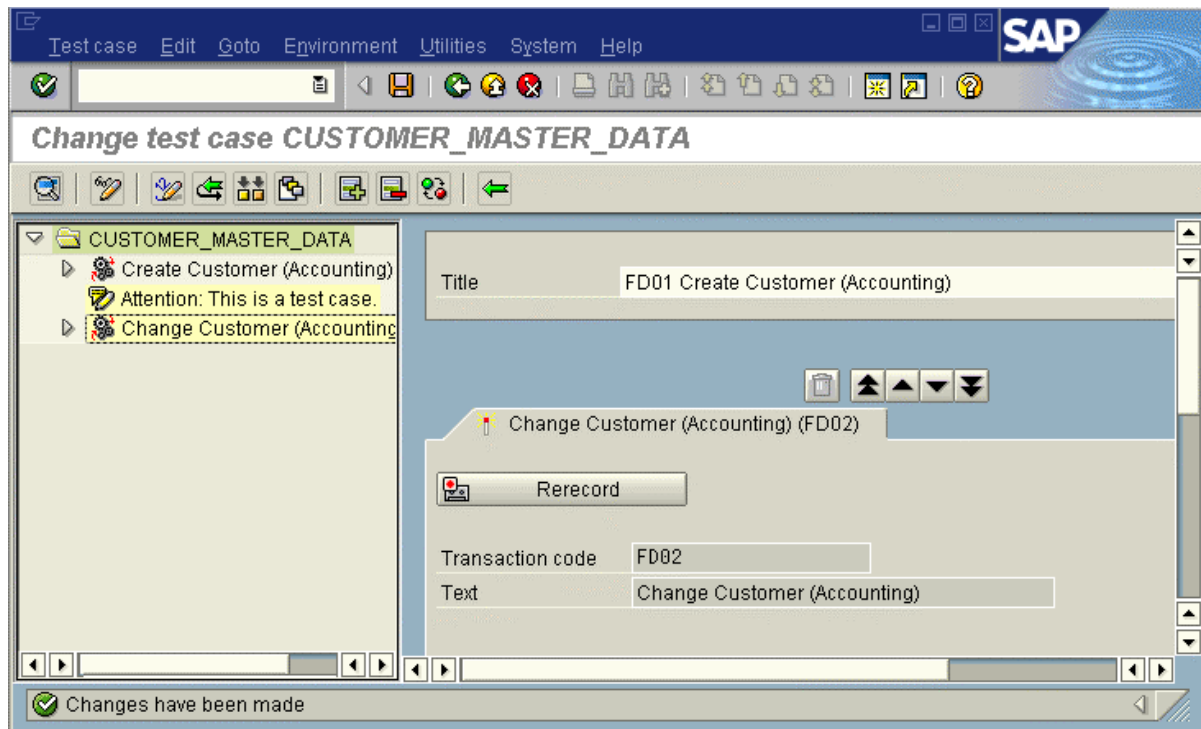
- Choose the *Control data* tab in the *Detail view* area.
- Expand the list of Ref.acct groups for one-time account (*customer*) with the pushbutton after the *Ref.acct group* input field.
- Choose *0007 Sales partner*.

You go back to *Change customer: General data*.

- Go back to the editor with *Back*.
- Confirm the save confirmation prompt.

You see the following screen:

Insert Transaction



Editor: *Change test case CUSTOMER_MASTER_DATA*. The transaction FD02 is in the test case.

Result

The transaction FD02 is now part of the test case. The system has recorded all steps in the transaction. You are in the CATT editor change mode.

Display Transaction Screens

Display Transaction Screens



Use

You can check all entries in the screens in a CATT transaction after recording.

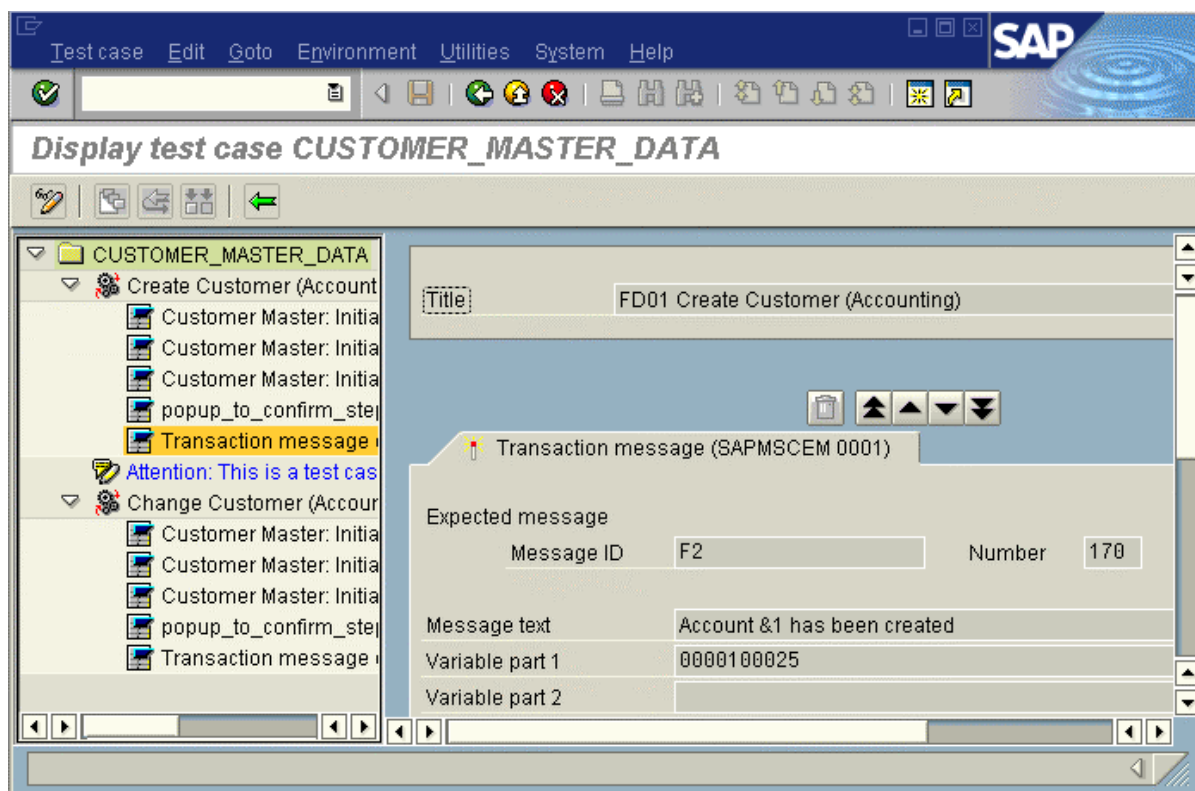
Prerequisites

You are in the editor *Change* mode. Your test case contains the functions FD01, comment and FD02.

Procedure

- Choose *Toggle between View <--> Change* pushbutton  in the *Application toolbar* (confirm data save if required).
- Expand all nodes in the test case structure with the triangle in front of the transactions .
- Choose the message from the first transaction FD01.


You see the following screen:



Editor: *Display test case CUSTOMER_MASTER_DATA*. You see the system message screen in the *Detail view area* of the Editor: The *Variable part 1* field shows the customer account number. This field is needed in the next section.

- Examine the remain test case screens.



You can go from the *CATT initial screen* directly into the Editor display mode with *Display*  in the Application toolbar.

- Go back to the *CATT initial screen* with *Back*.

Result

You can display the screens in a transaction. You are in the *CATT initial screen*.

Run Test Case in the Foreground

Run Test Case in the *Foreground*

Use

You have already run a test case. There are other ways of doing this. You ran your test case in *Background* mode, now we will use *Foreground* mode. In this mode you can assess each screen at runtime.

Prerequisites

You are in CATT display mode. Your test case has been created. Choose your test case.

Procedure

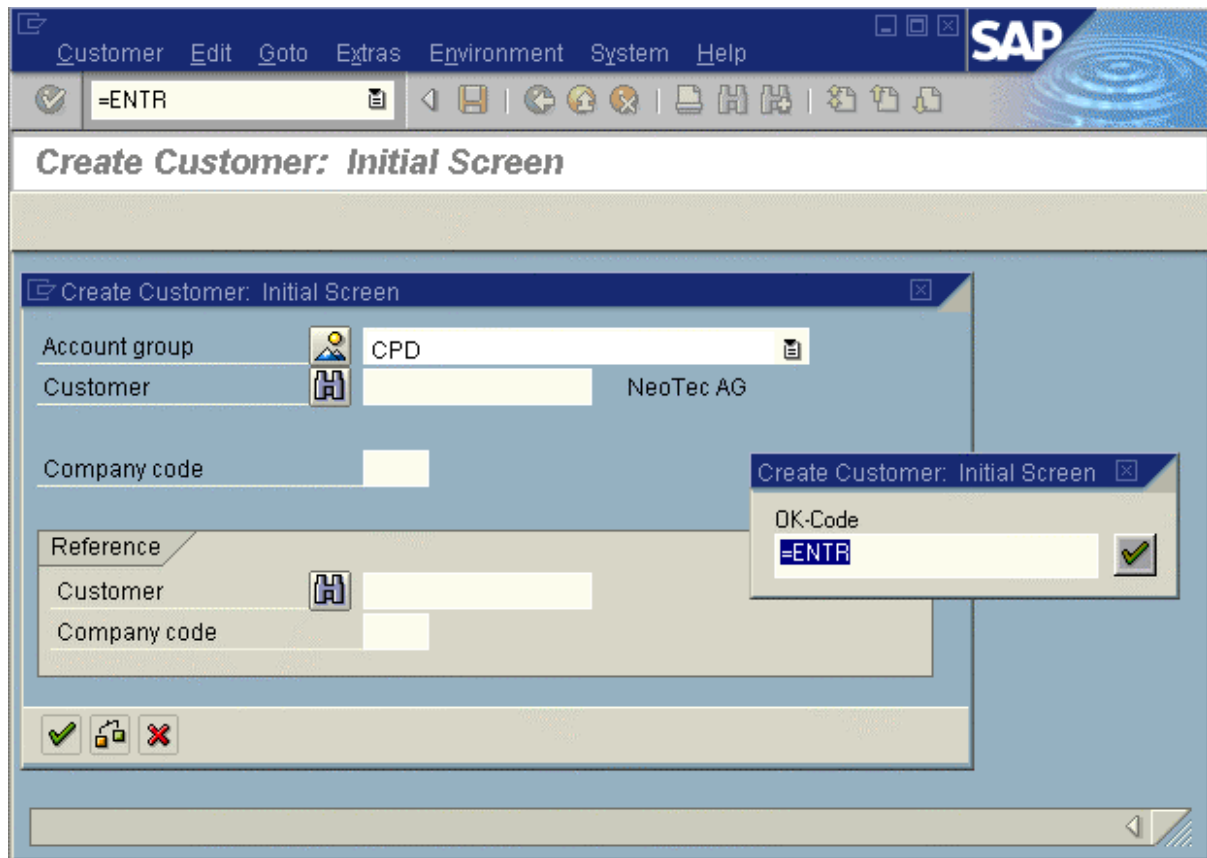
- Choose *Execute*.

You go to the *Execute CATT test case CUSTOMER_MASTER_DATA* screen.

- Choose *Processing mode Foreground*.
- Choose *Execute*.

You go to:

Run Test Case in the Foreground



Create customer: Initial screen. You see the screen which you first filled in the recording of transaction *FD01*.



CATT runs the transaction in *Foreground* mode. In this mode, you see all the screens which were recorded. You cannot change the screens: You must confirm a dialog box on the screen. CATT goes to the next screen. A third mode, in which you can change screens, is described later.

- Confirm the dialog box with *Continue* .

You go to the next screen in the transaction.

- Step through all the screens in the test case.

When *FD01* and *FD02* have run success messages appear in the status bar. At the end you go to the log screen.

Run Test Case in the Foreground

- Check the log
- Go back to the *CATT initial screen* with *Back* (twice).

Result

A new account and a log have been created. You are in the *CATT initial screen*.

Display Accounts

Use

Your test case creates an account. This section describes how to display these accounts. This procedure is not part of CATT, but is useful for it.

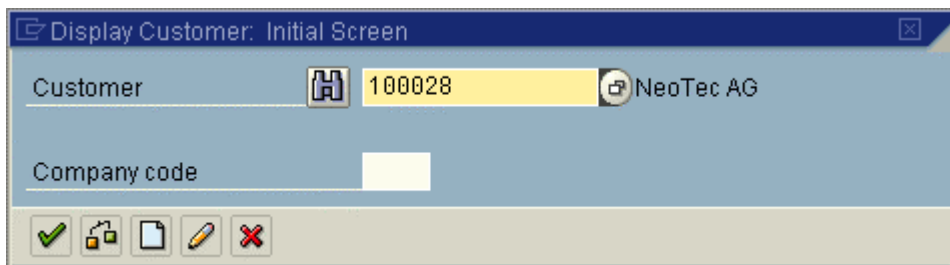
Prerequisites

You are logged on to the SAP System. You have already created accounts with your test cases.

Procedure

- Enter `/o£d03` in the *Command field*.
- Confirm your entry with *Enter*.

A new SAP System session starts with the following dialog box:



Dialog box: *Display customer: Initial screen*.

- Open the *Restrict value range* screen with the pushbutton after the *Customer* input field.

You go to the following screen:

Display Accounts

Customers (general) Customers (by company code) Customers by country...

Search term *cap*

Zip code

City

Name

Customer

Maximum no. of hits 500

✓ 🔄 ⓘ ✕

Restrict value range. The required entry has already been made here.

- Enter ***cap*** (* is a wildcard)
- Confirm your entry.

A list of all accounts whose search term contains the string *cap* is displayed; including all *NeoTec AG* accounts:

(2) 5 Entries found

✓ Customers (general) Customers (by company code) Customers by ...

✓ ✕ 🏠 🔄 📄 🖨️ 📧 📧

Search term: CAPACITORS

Zip code:

City:

Name: NEOTEC AG

Customer

100016

100025



100026

100027

100028

Display Accounts

Customer account number. Several accounts exist. The numbers need not be consecutive. (The System chooses the number in internal no. ass.)

- Close the list and dialog box with *Cancel*  in the *Standard toolbar*.
- Close the additional SAP System session with *End*  in der *Standard toolbar*.

You go back to the CATT initial screen in the first session.

Result

You can now display the accounts created. The additional SAP System session is closed. You are in the *CATT initial screen*.

Define Chain

Define Chain


Use

You have now recorded two transactions in the test case, Create (FD01) and Change (FD02) a customer account. You must link the two transactions so that entries in the test case created can be changed when the test case runs: This linking in CATT is called *Chaining* (if a test case has the function FD02, CATT copies the parameters required – but this is not always the case, so you should perform the chaining).

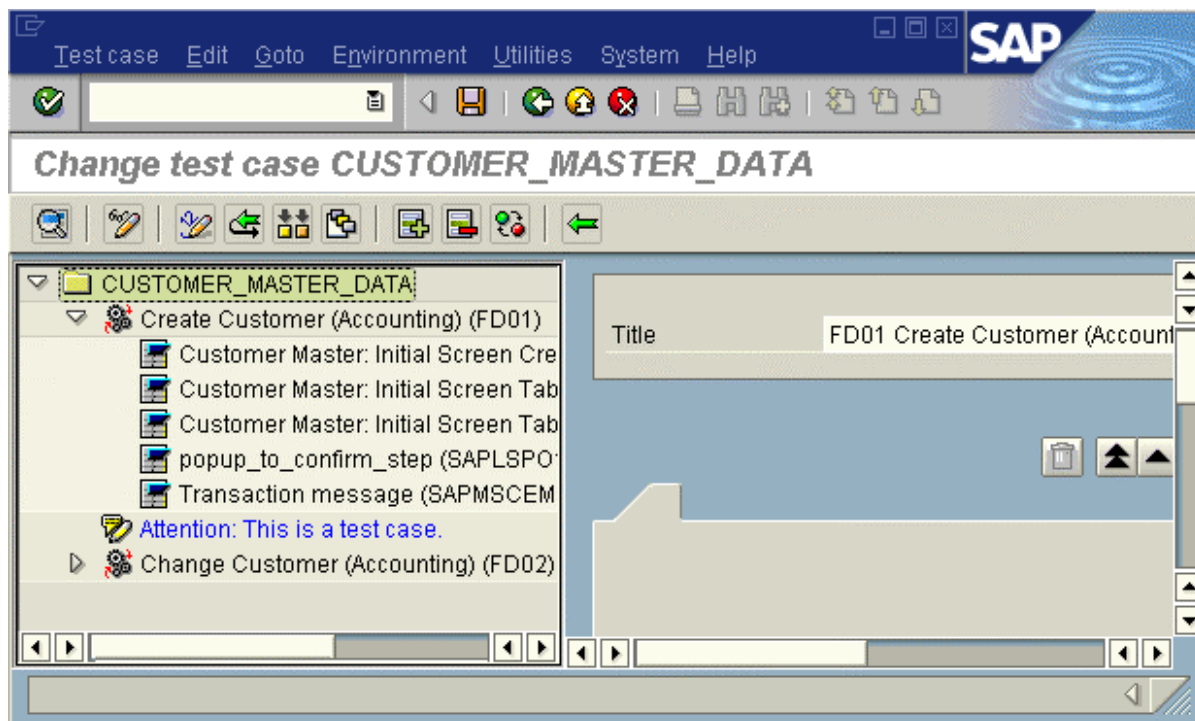
Prerequisites

You are in the CATT initial screen. If you have left CATT, start it again. The transactions FD01 and FD02 have been recorded.


Procedure

- Choose your test case.
- Go to the Editor with *F6*.
- Open both transactions  with the small triangle to the left of them.

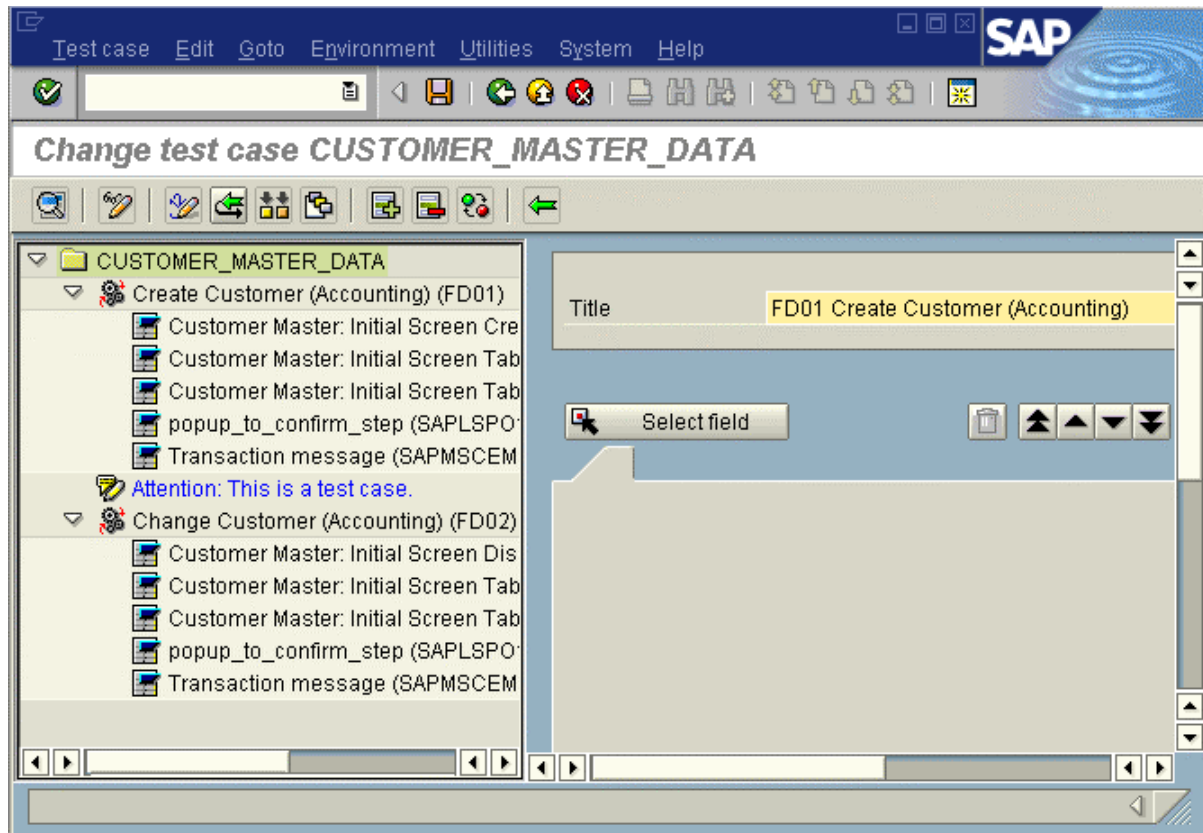
You go to the following screen:



Editor: *Change test case CUSTOMER_MASTER_DATA*. The *Create customer* transaction is already opened: You see a downward-pointing triangle and the list of recorded screens. The second transaction is still closed, the triangle points to the right.

- Start chaining with *Chaining input and output fields*  in the *Application toolbar*.

A *Select field* pushbutton appears in the following screen:

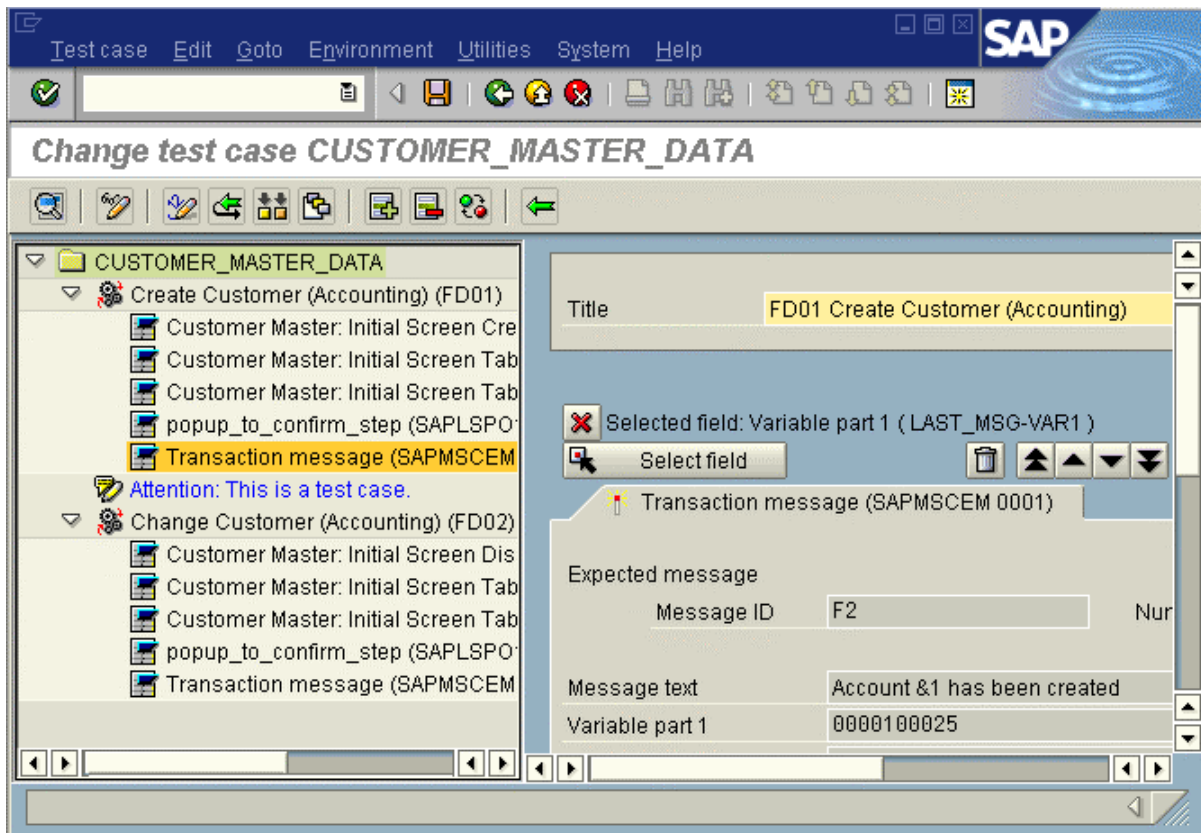


Editor: *Change test case CUSTOMER_MASTER_DATA*: The *Select field* pushbutton is in the detail view area.


- Open the message from transaction FD01 by double-clicking in the navigation area

The system copies the field and displays the following screen:

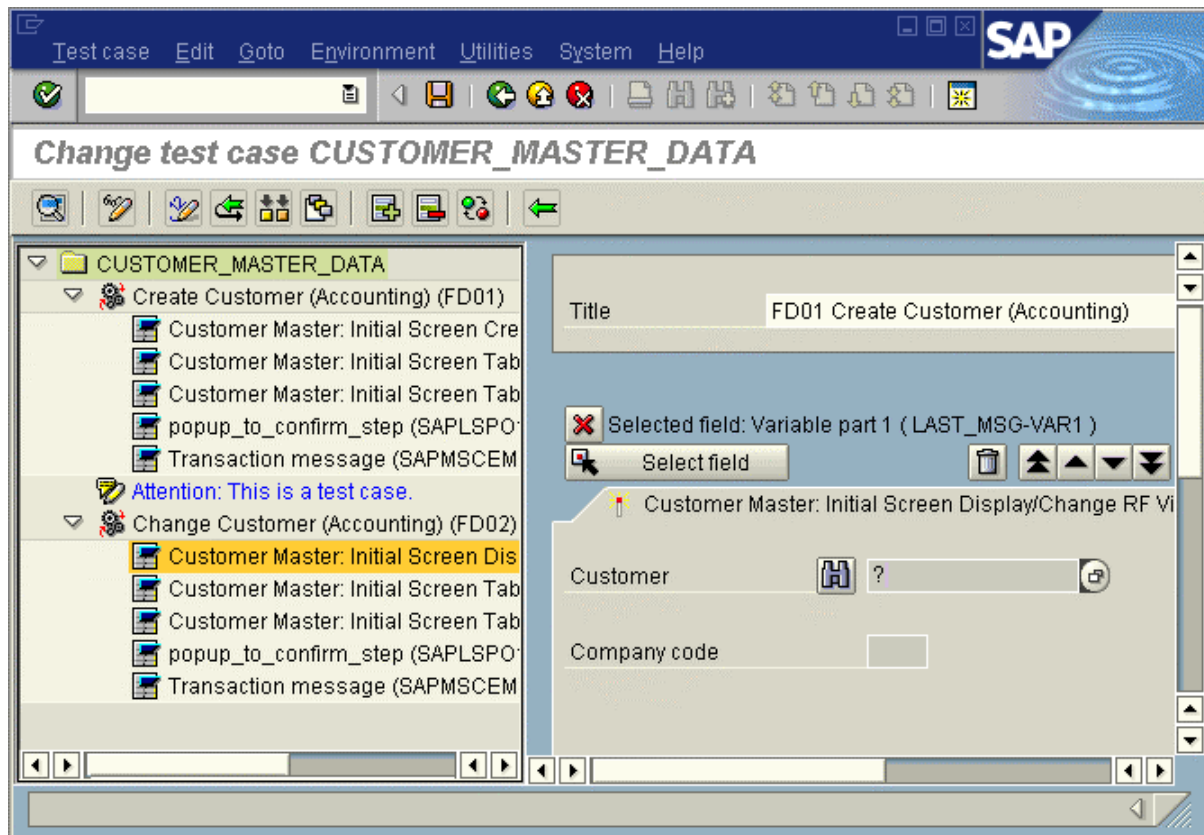
Define Chain




Editor: *Change test case CUSTOMER_MASTER_DATA*: The field has already been selected. Note the prompt in the status bar and the display of the field selected above the *Select field* pushbutton.

- Put the cursor in the *Variable part 1* field after the account number in *Transaction message (SAOMSCEM 0001)*. It is in the Editor detail area.
- Click on the *Select field* pushbutton  in the Editor detail view area.
- Choose the first screen in the *Change customer* transaction.


You go to:



Editor: *Change test case CUSTOMER_MASTER_DATA*: The cursor is already in the *Customer* input field. The first field selected is displayed.

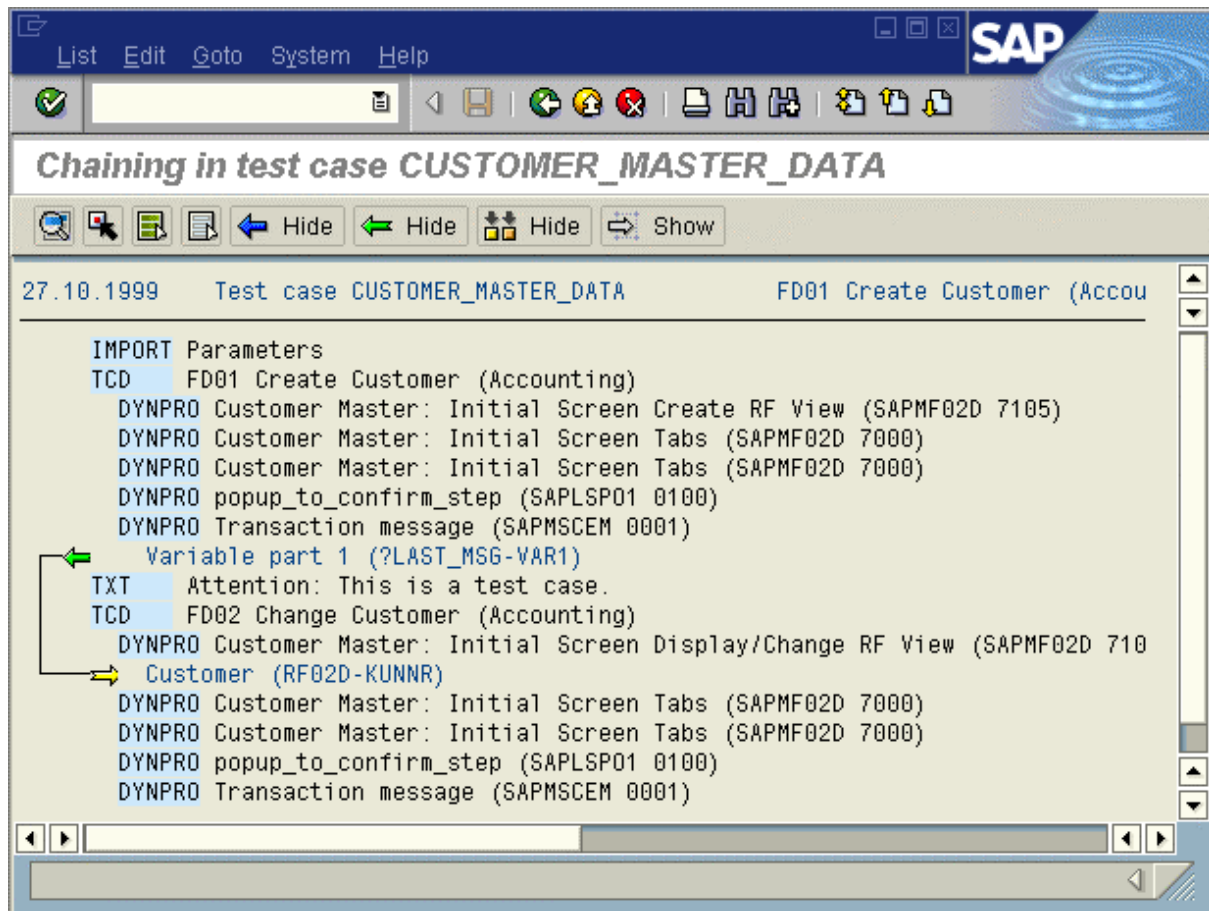
- Copy the *Customer* field by putting the cursor in the field and
- Choosing *Select field* .

The selected field display changes to *customer (RF02D-KUNNR)*. The chaining of the two fields is confirmed in the status bar.

- Display the chaining with *Display chaining*  in the Application toolbar.

You go to:

Define Chain



Chaining in test case *CUSTOMER_MASTER_DATA*. The chained fields in the screens are highlighted.

- Go back to the *CATT initial screen* with *Back* (twice).
- Confirm the save prompt.
- Run the test case and analyze the log. (In *Background processing*, processing ends with the message *Changes made* in the status bar).
- Go back to the *CATT initial screen*.

Result

You are in the *CATT initial screen*. The transactions FD01 and FD02 are chained. The transaction FD02 now changes the account just created by FD01 each time the test case runs. A test plan log and account were created.

Create a Test Case On Your Own

Use

You have now met a lot of CATT functions and can create and analyze a test case on your own. You can do so here. The test case is also used in the next section to show a new processing mode, and later to delete functions and test cases.

Prerequisites

You are in CATT and have done the previous lessons.

Procedure

Read the following notes and create a test case on your own.



Follow the test case naming convention: in the customer namespace it must start with Y or Z.

This test case is used to delete subobjects and test cases.



Choose an account type with internal no. assignment. If you want to create another customer account as test case: You can

- a) choose another customer or
- b) another one-time customer with internal no. assignment.

In the second case you must logoff the SAP System and logon again.

This is because the SAP System creates the field values with SET/GET: only field value changes are saved permanently and are available after the next logon.

- Create a test case with two transactions and go back to the CATT initial screen.

Result

You have created a new test case and are in the CATT initial screen.

Run Test Case in Display Errors Mode

Run Test Case in *Display Errors* Mode

Use

You use the third processing mode, *Display errors*, with your own test case. In this mode, the test case runs in the background until an error occurs. When an error occurs, the system shows the screen and allows changes (for the duration of the current run).

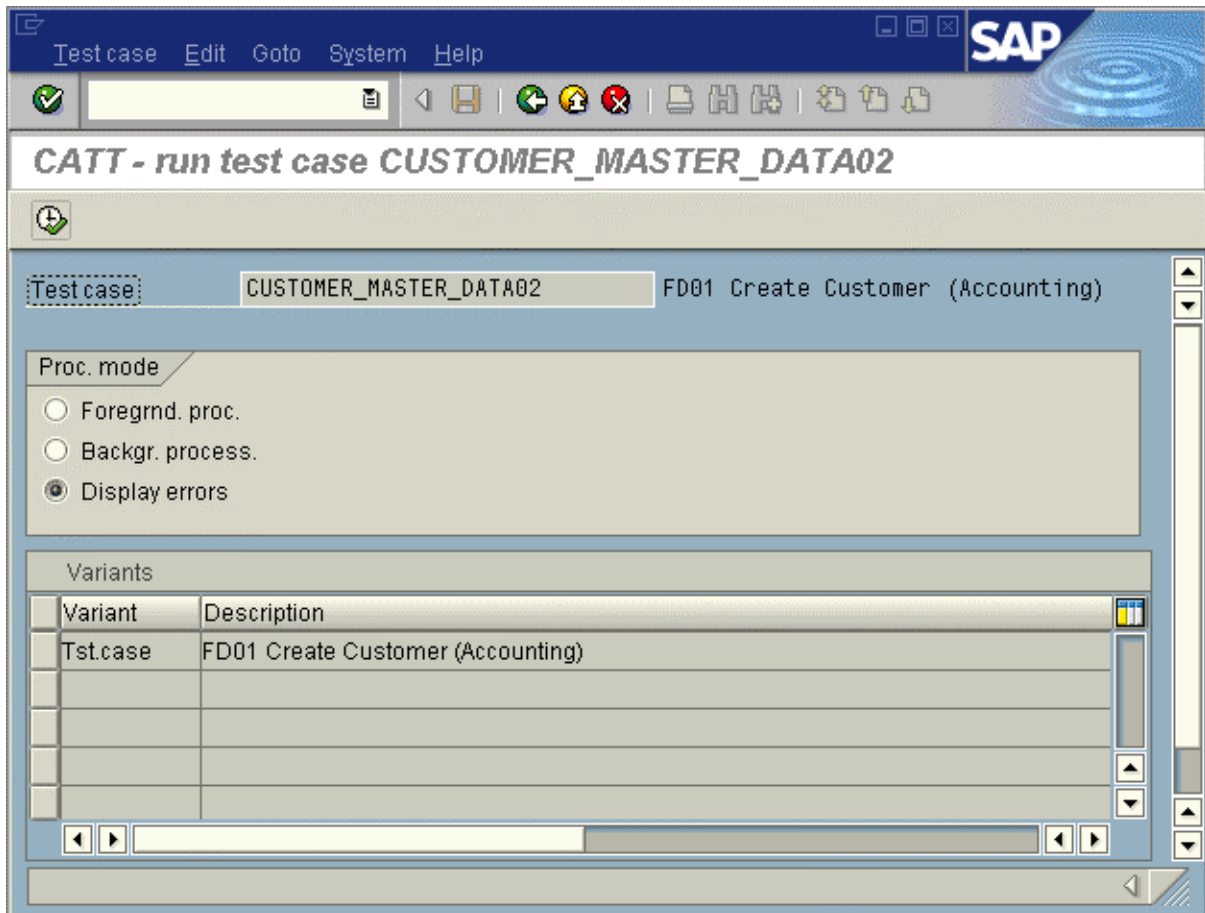
Prerequisites

You are in the CATT initial screen; a test case has been created.

Procedure

- Go to run test case.

You see the following screen:



CATT- run test case Customer_Master_data02.

Run Test Case in Display Errors Mode

- Choose processing mode *Display errors*.
- Run the test case.
- Change any screens with errors.
- Go back to the *CATT initial screen*.

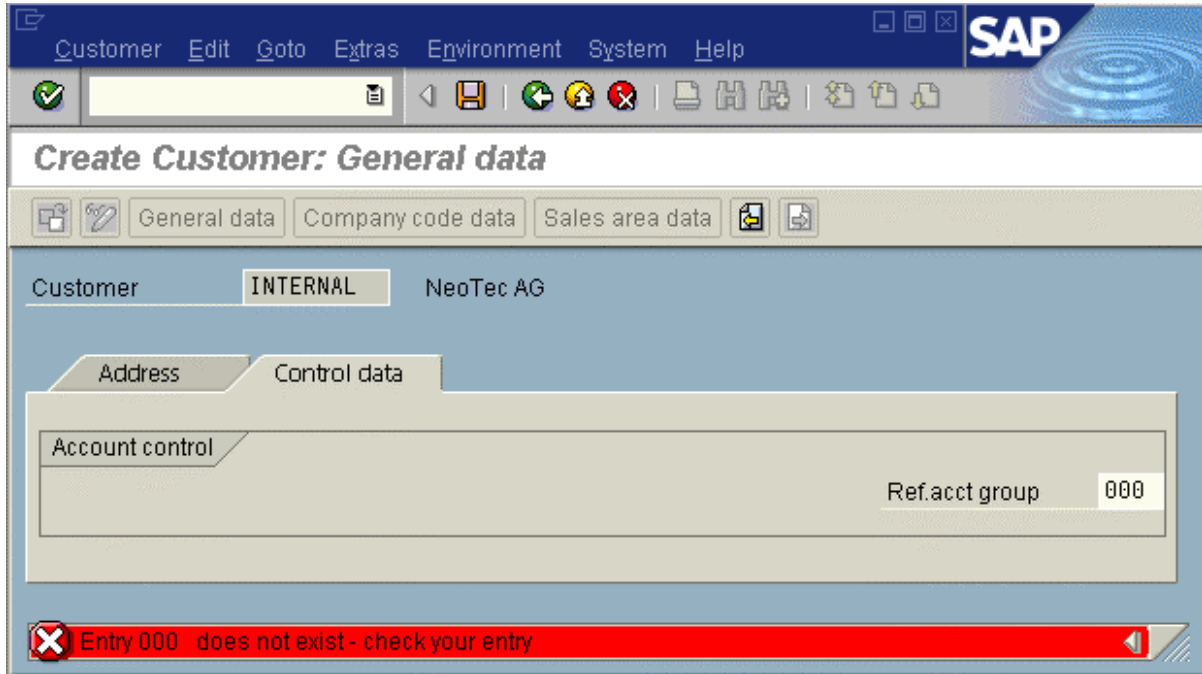
Result

You have now created a test case on your own and run it in the third processing mode. You are in the *CATT initial screen*.

Example: Test Case with Error Message

Example: Test Case with Error Message

Errors are indicated in the status bar in *Display errors* processing mode. Example:



Create customer: General data. The system displays the screen with errors. The Ref.acct group was typed into the input field. The status bar flashes red for a second; text and screen remain.

- Set the cursor in the field with the incorrect value
- Correct the error.
- Copy the change with *Back*.

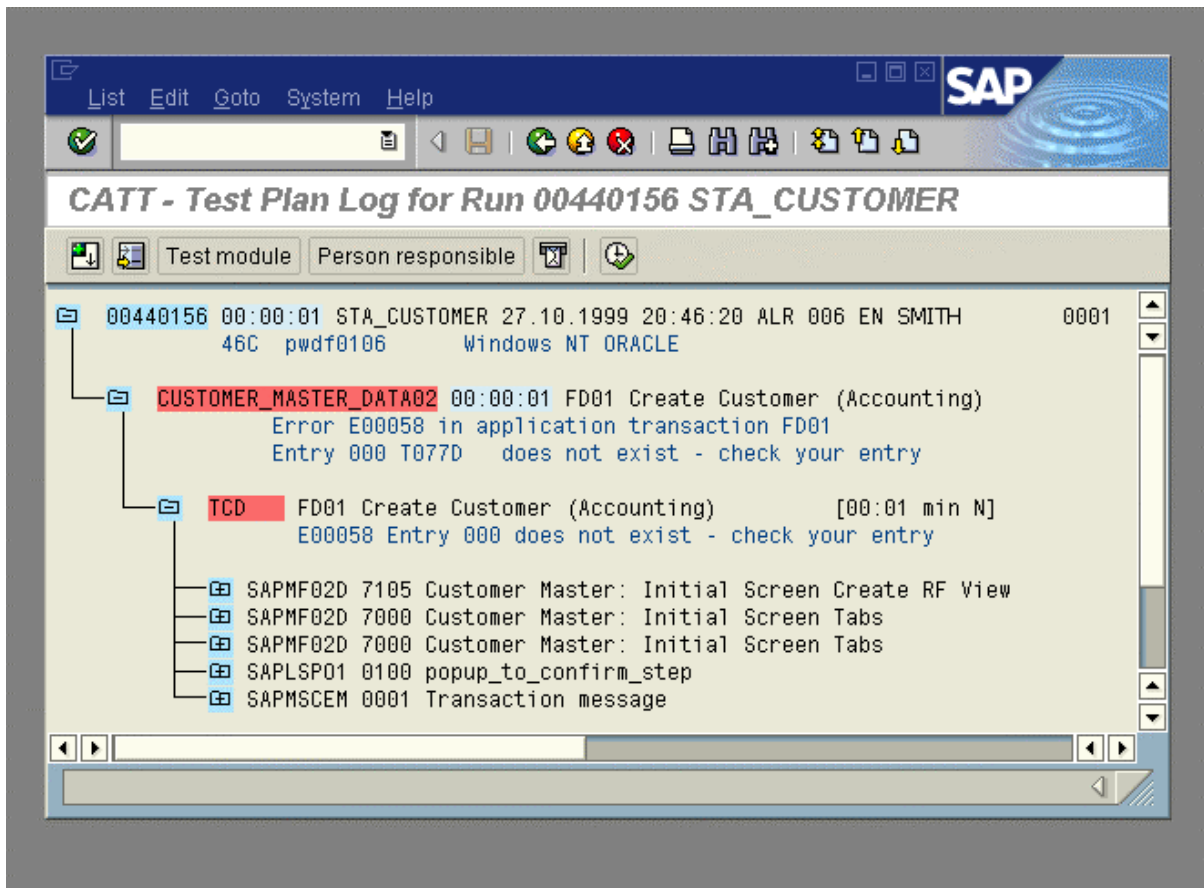


The error correction only applies to the current run.

The system runs the test case to the end and creates a log.

If an error is not resolve in the test run, e.g. in processing mode *Background*, it is shown in the log:

Example: Test Case with Error Message



CATT – Test plan log for run 00620916 STA_Customer: Transactions and screens with errors are highlighted in red.

You can make these errors yourself in another test case to examine the situation.

Delete Functions and Test Cases

Delete Functions and Test Cases

Use

Test cases can be deleted. If you no longer need a subobject of a test case, you can delete it without affecting the rest of the test case.

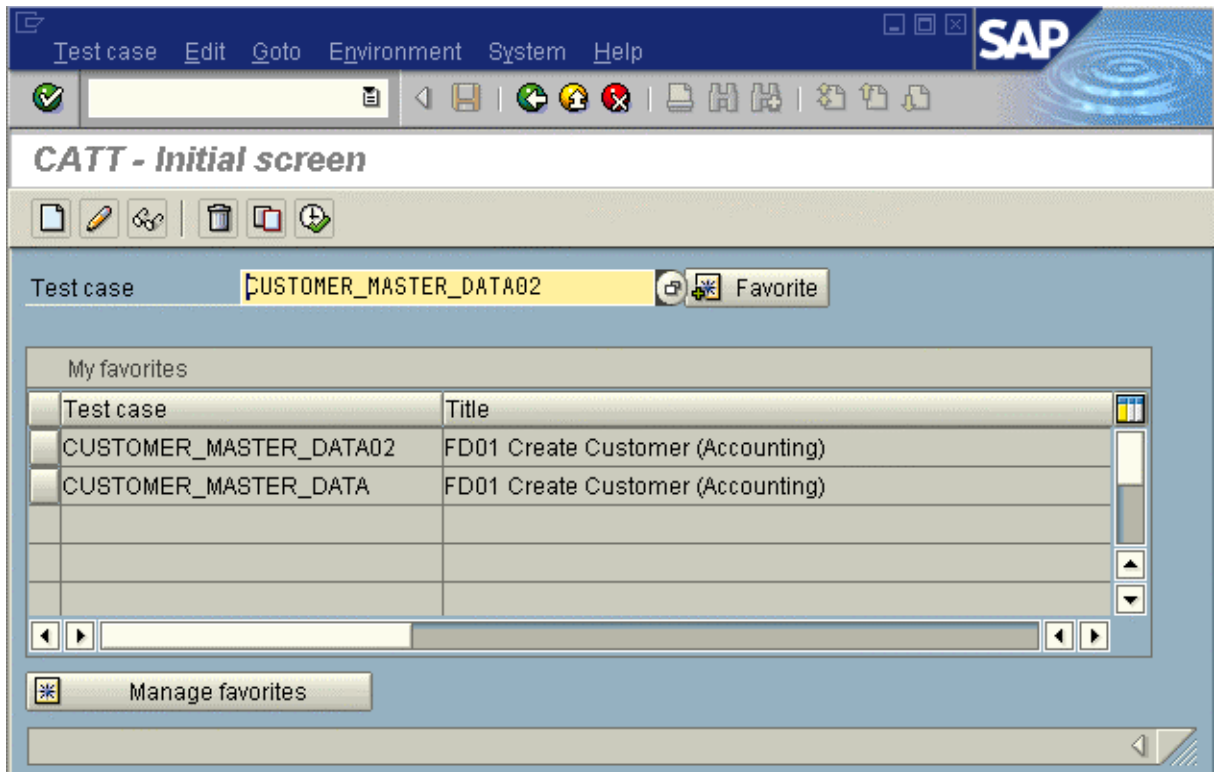
Prerequisites

You are in the *CATT initial screen* and have at least two Favorite test cases: CUSTOMER_MASTER_DATA and at least one other which you created.

Procedure

- Choose the test case which you created on your own (not CUSTOMER_MASTER_DATA).

You go to a screen like:



CATT Initial screen: Your test case is selected.


Delete functions

Functions are transactions and comments.

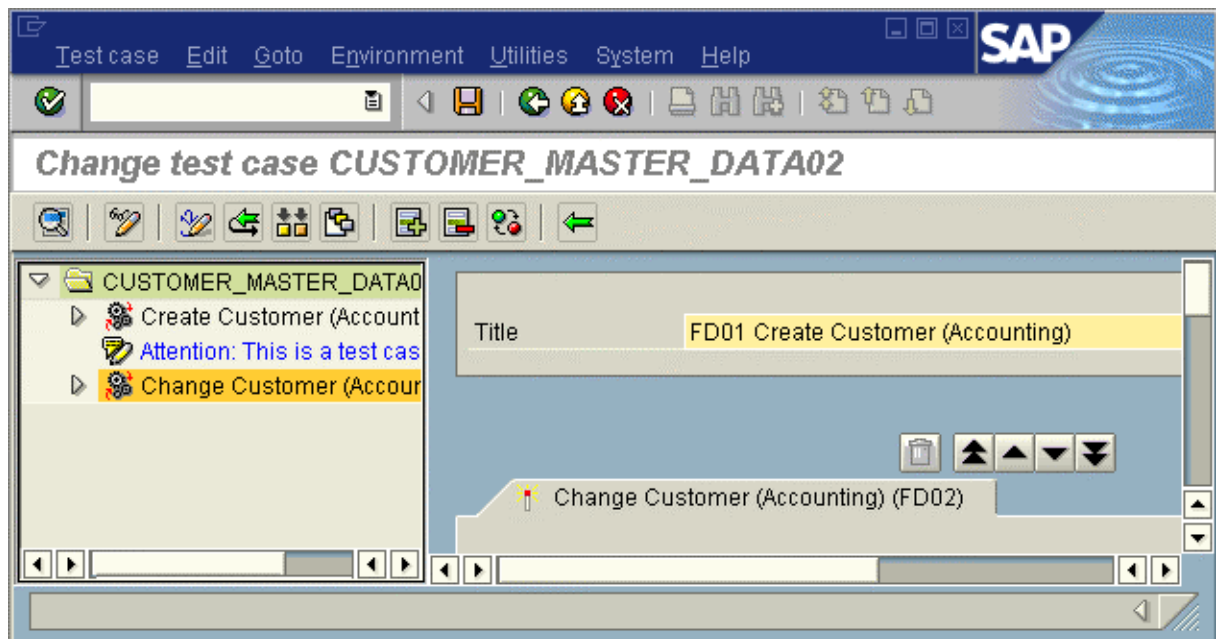
- Go to the Editor with *Change* .

Delete Functions and Test Cases

You are in the Editor in *Change mode*.

- Open the test case with the triangle pointing to the right in front of it (if it is not already open).
- Choose the second transaction  in the test case.

You see the following screen:



Editor: *Change test case TEST_CASE_NAME*: The second transaction is selected and displayed in the tab in the Editor *Detail view area*.

- Delete the transaction with *Delete function*  in the application toolbar.



The System deletes the transaction without confirmation.


- Go back to the *CATT initial screen*.
- Confirm the save confirmation prompt.

You are in the *CATT initial screen*. The transaction FD02 is deleted.

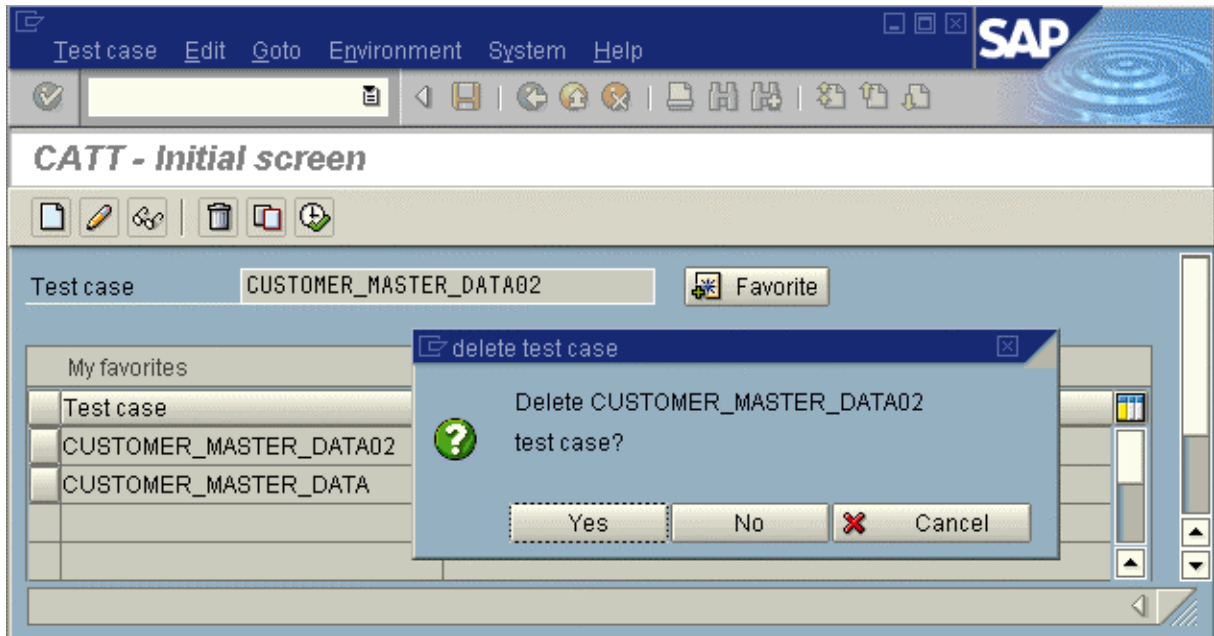
Delete Functions and Test Cases

Delete Test Cases

You are in the CATT initial screen.

- Delete the whole of the test case which you created yourself by selecting it and
- Choose *Delete*  in the application toolbar.

You see the following screen:



CATT initial screen: Delete has already been chosen.

- Confirm the save confirmation prompt.

Result

You are in the CATT initial screen. The test case which you created on your own has been deleted.

Define and Perform Checks

Use


This function defines field and system message contents checks. You can check constant values (e.g. Name: Smith) or field values from screens of previous transactions (e.g. Field *Name*). The check tells you for example, whether a transaction ended with an expected message.

Prerequisites

You are in the CATT initial screen. You have created the test case *CUSTOMER_MASTER_DATA*.

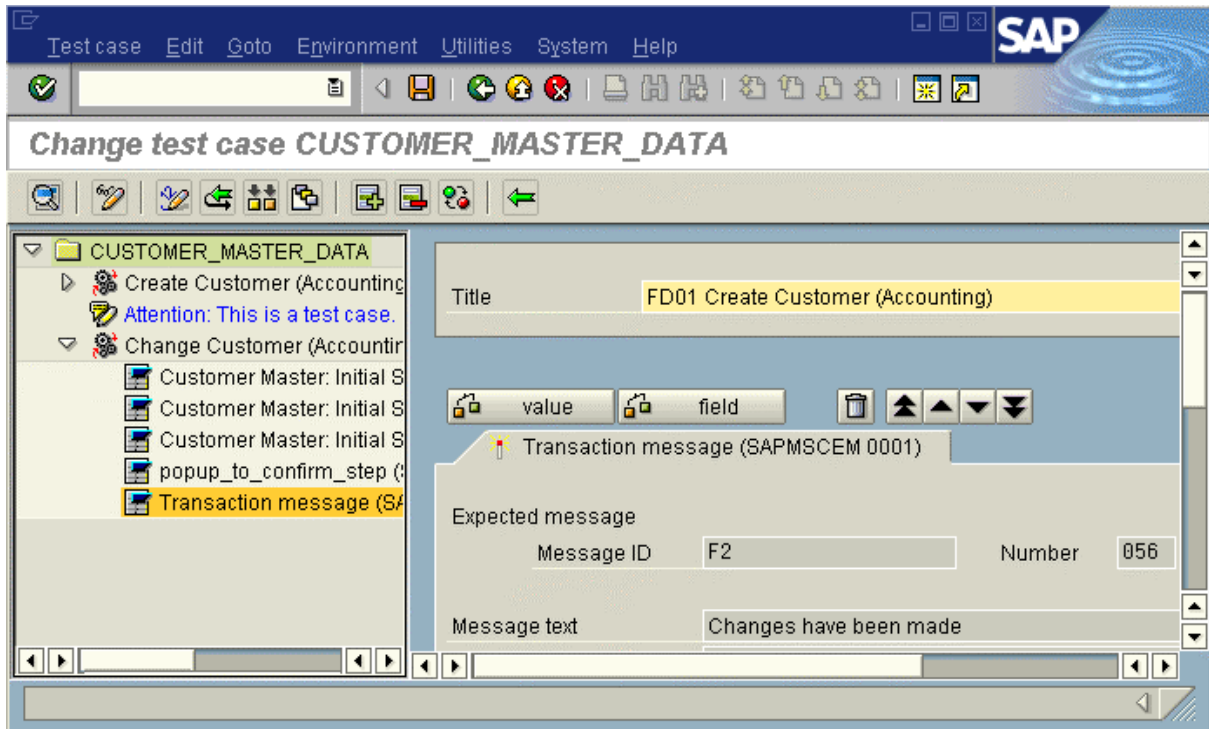
Procedure to check a value

You specify a check whether a particular value occurred in a prescribed way in a particular screen field


- Choose the test case *CUSTOMER_MASTER_DATA*.
- Go to the Editor with *Change* .
- Open the transaction *FD02*.
- Choose *Transaction message*.
- Start the check definition with *Field checks* .

You see the following screen:

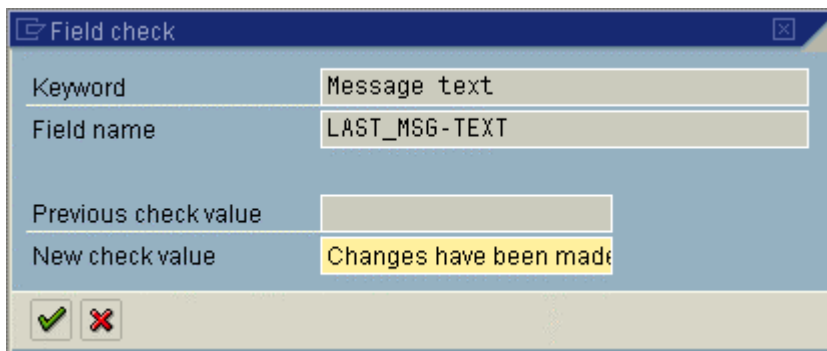
Define and Perform Checks



Editor: Test case CUSTOMER_MASTER_DATA: The transaction FD02 is opened. The pushbuttons Value and Field are in the Editor Detail view area.

- Put the cursor in the Message text input field in the Detail view area.
- Choose Value .

The following dialog box appears:



Dialog box: Field check. The field value is proposed as new check value.

- Confirm the proposal with Continue.

Define and Perform Checks

An equals sign appears before the value in the message screen. This indicates a check:

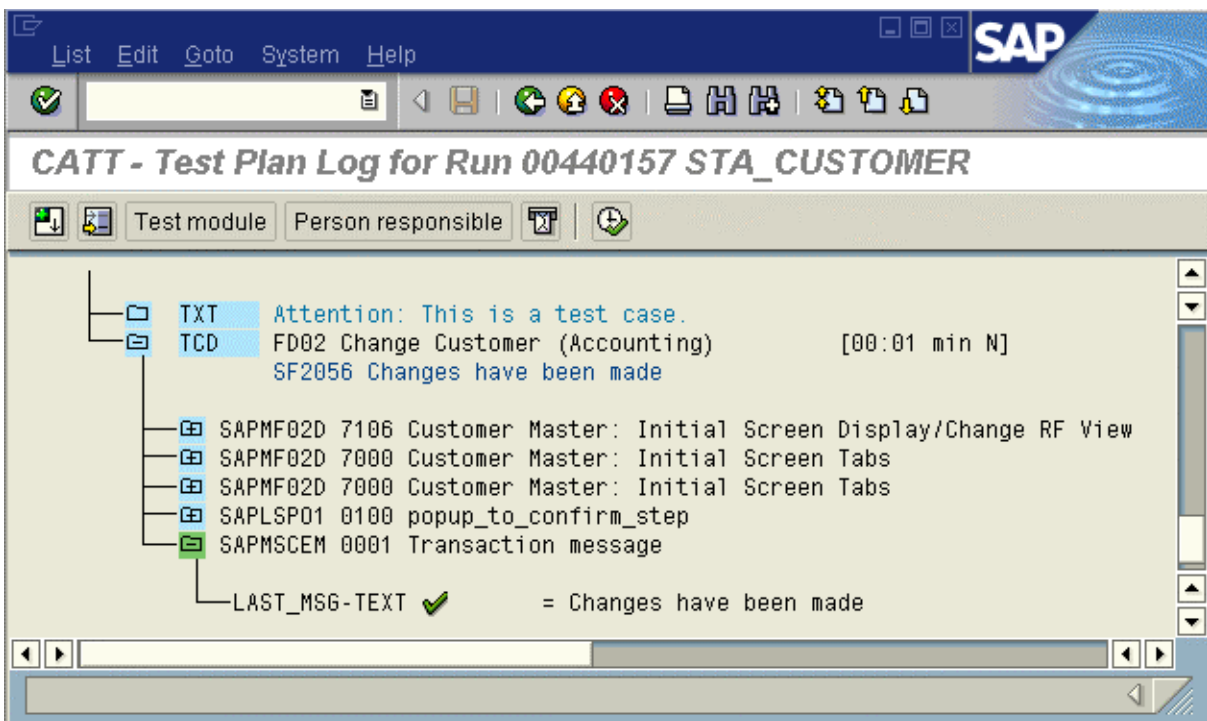
Message text =Changes have been made
 Message text =Changes have been made.

- Go back to the CATT initial screen with Back.
- Confirm the save confirmation prompt.
- Run the test case.

The log appears.

- Expand all nodes.

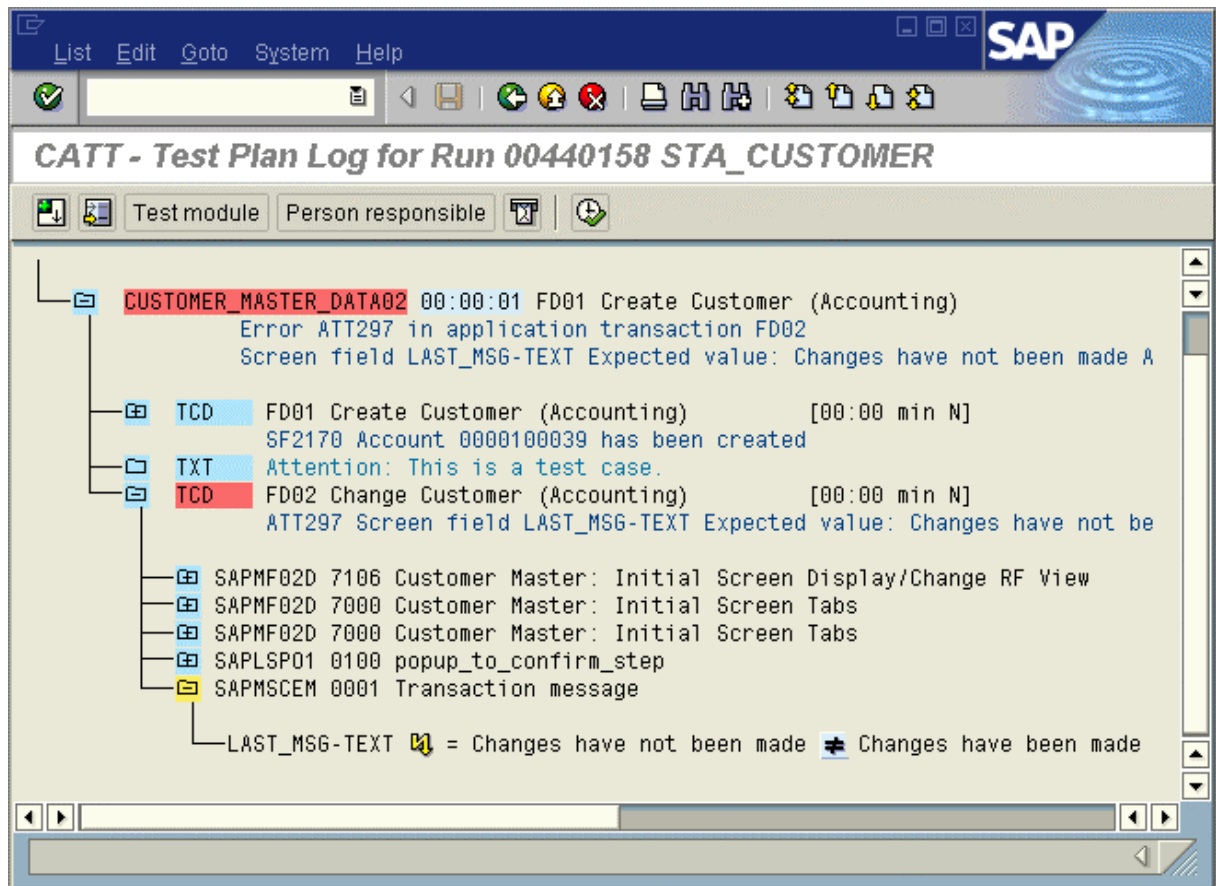
The following screen appears (upper part omitted):



CATT – Test plan log for run 00622800 STA_Customer. The green marking of the system message and the tick indicate a positive check result.

A negative check result is logged as follows:

Define and Perform Checks



CATT – Test plan log for run 00622800 STA_Customer: The red marking of the test case and the yellow marking of the message show the negative check result.

➤ Go back to the CATT initial screen.

Result

You have defined a check against a value in the test case *Customer_master_data*. You have run the test case and analyzed the log. You are in the CATT initial screen.

Editing Variants

Use

In a test case, values are put in the input fields of the transactions to be tested. A complete set of these values is a variant. The variant provides test case data at runtime.

When you create a test case, the system automatically creates a *Standard variant* with the name *Test case*. It contains the values which you entered when you recorded the test case. When you create other variants, any input fields which you do not specify take the values in the standard variant.

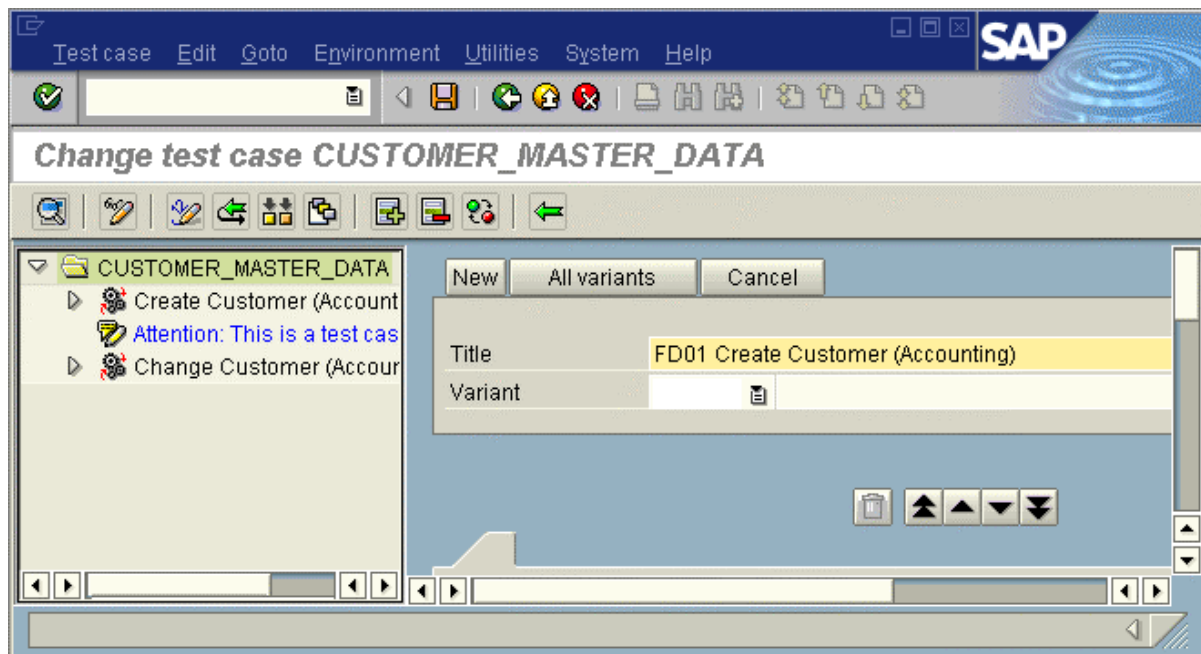
Prerequisites

You are in the *CATT initial screen*. You have created a test case.

Creating Variants

- Go to the Editor in change mode.
- Choose *Variants by fields*  in the *Application toolbar*.

You see the following screen:

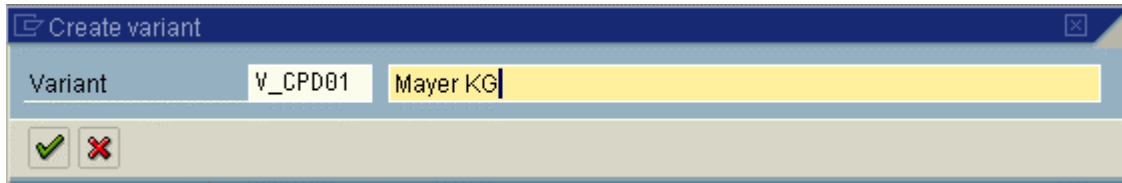


Editor: Change test case CUSTOMER_MASTER_DATA: The pushbutton *New* is in the detail view area.



- Choose *New*.

Editing Variants

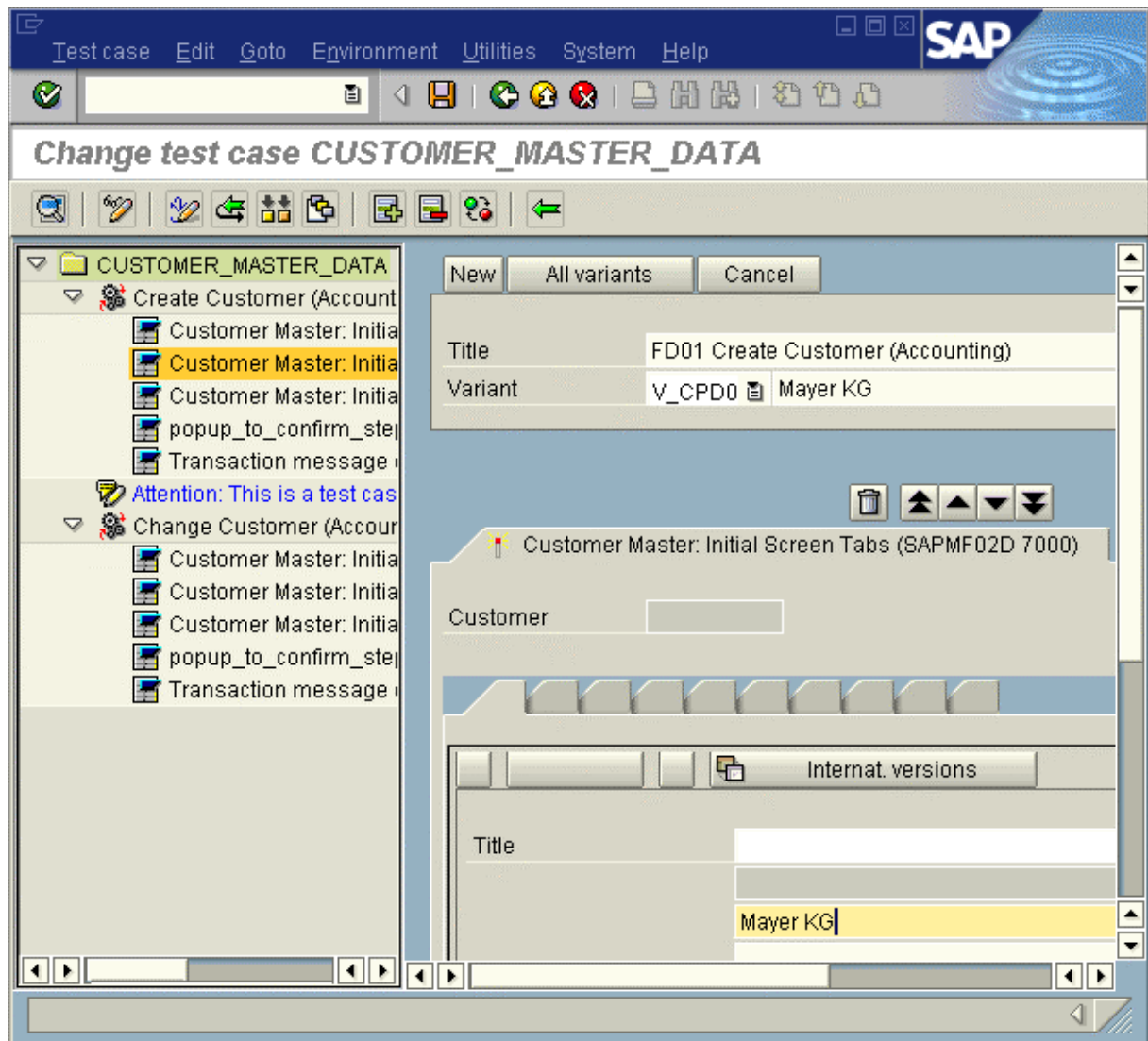
The following dialog box appears:



Dialog box: *Create variant*. The required entries have already been made.

- Enter a *Variant ID* `V_CPD01` in the first input field.
- Go to the next input field with Tab.
- Enter a *Short description* `Mayer KG` in the second input field.
- Confirm your entries with *Continue*.
- Open the transaction in the navigation area.
- Enter variant maintenance by calling the first screen  of the transaction `FD01`.
- Leave the account type unchanged and go to the second screen with *Next screen*  in the detail view area.



You go to:



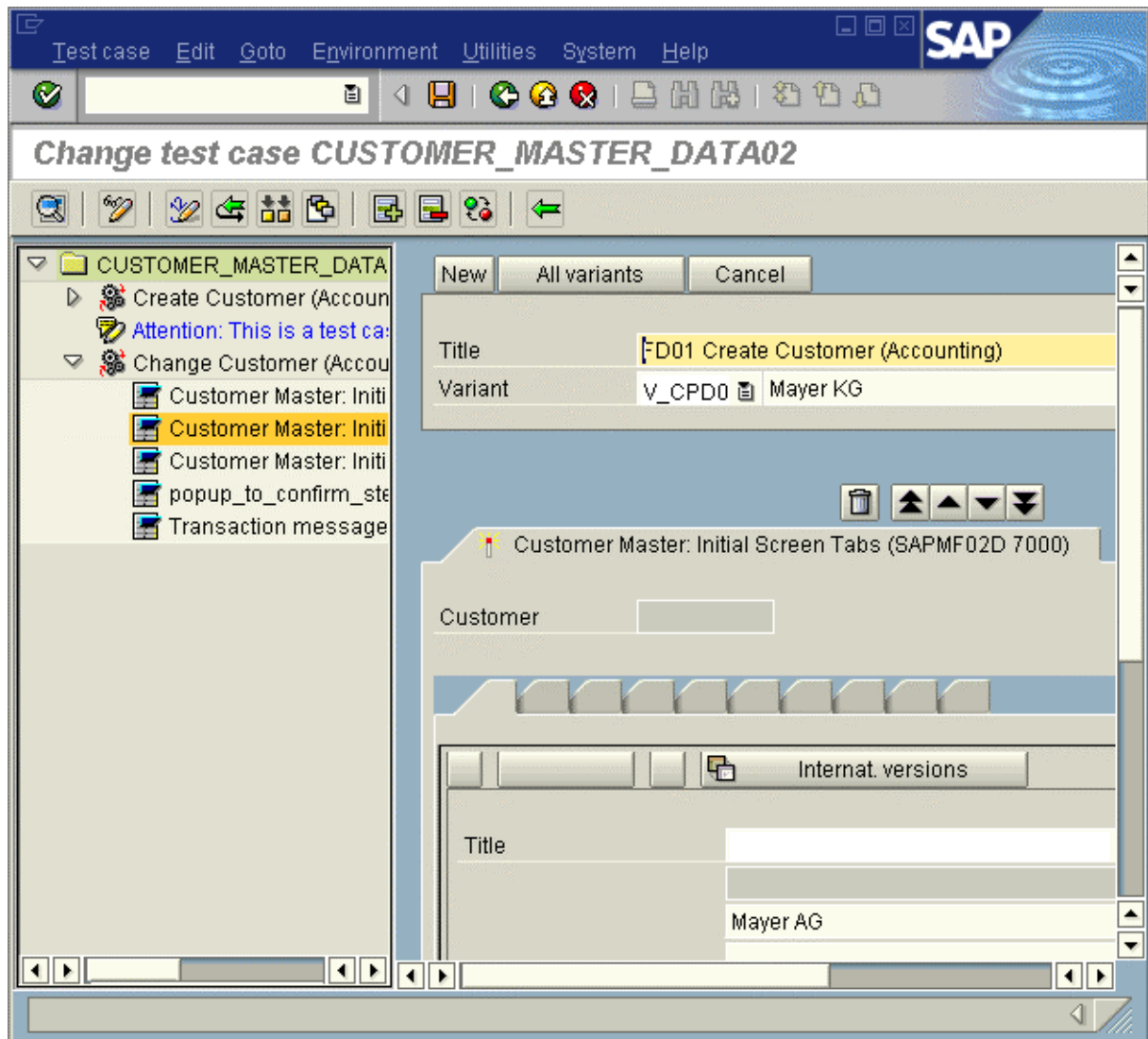
Editor: Change test case CUSTOMER_MASTER_DATA. The first change in the second screen (from NeoTec AG to Mayer KG) has already been made.

- Ändern sie *NeoTec AG*, indem Sie es mit **Mayer KG** überschreiben. (Markieren Sie dazu *NeoTec AG* und tippen Sie den neuen Text im Eingabefeld des Detailsichtbereiches).
- Ändern Sie nun den Suchbegriff 1/2 von *Folienkondensatoren* in **Spulen** .(Gehen Sie wie zuvor vor; evtl. müssen Sie auf der Bildschirmleiste nach unten gehen, um das Eingabefeld zu sehen)
- Wechsel Sie zum nächsten Bildschirmbild, indem Sie die *Nächstes Dynpro*-Drucktaste ▼ im Detailsichtbereich klicken.
- Ändern Sie die *RefKontengruppe* von 0004 in 0005, indem Sie die Zahl überschreiben.

Editing Variants

- Wechseln Sie nun zur nächsten Transaktion , indem Sie zweimal die *Nächste Funktionszeile*-Drucktaste  klicken (das erste Mal bringt Sie zur Funktion Kommentar, der jetzt nicht geändert zu werden braucht).
- Gehen Sie nun zum zweiten Bildschirmbild, indem Sie zweimal die *Nächstes Dynpro*-Drucktaste  im Detailsichtbereich klicken.
- Ändern Sie den Namen *Mayer KG* in *Mayer AG*, indem Sie den geänderten Namen im eingabebereiten Feld unterhalb des *Anrede*-Feldes eingeben.

Sie sehen dabei folgendes Bildschirmbild:



Editor: Ändern Testfall DEBITOR_STAMMDATEN: Der neue Firmenname ist bereits eingetragen.

- Kehren Sie nun zum *CATT-Einstieg* zurück und
- sichern Sie dabei den geänderten Testfall.

Ergebnis

Sie befinden sich nun wieder im *CATT-Einstieg*; eine Variante zum Testfall DEBITOR STAMMDATEN ist angelegt.

Einsatz von Varianten beim Ausführen eines Testfalles

Einsatz von Varianten beim Ausführen eines Testfalles


Verwendung

Eine Variante setzen Sie ein, um das Systems beim Ausführen eines Testfalles mit neuen Werten zu testen.

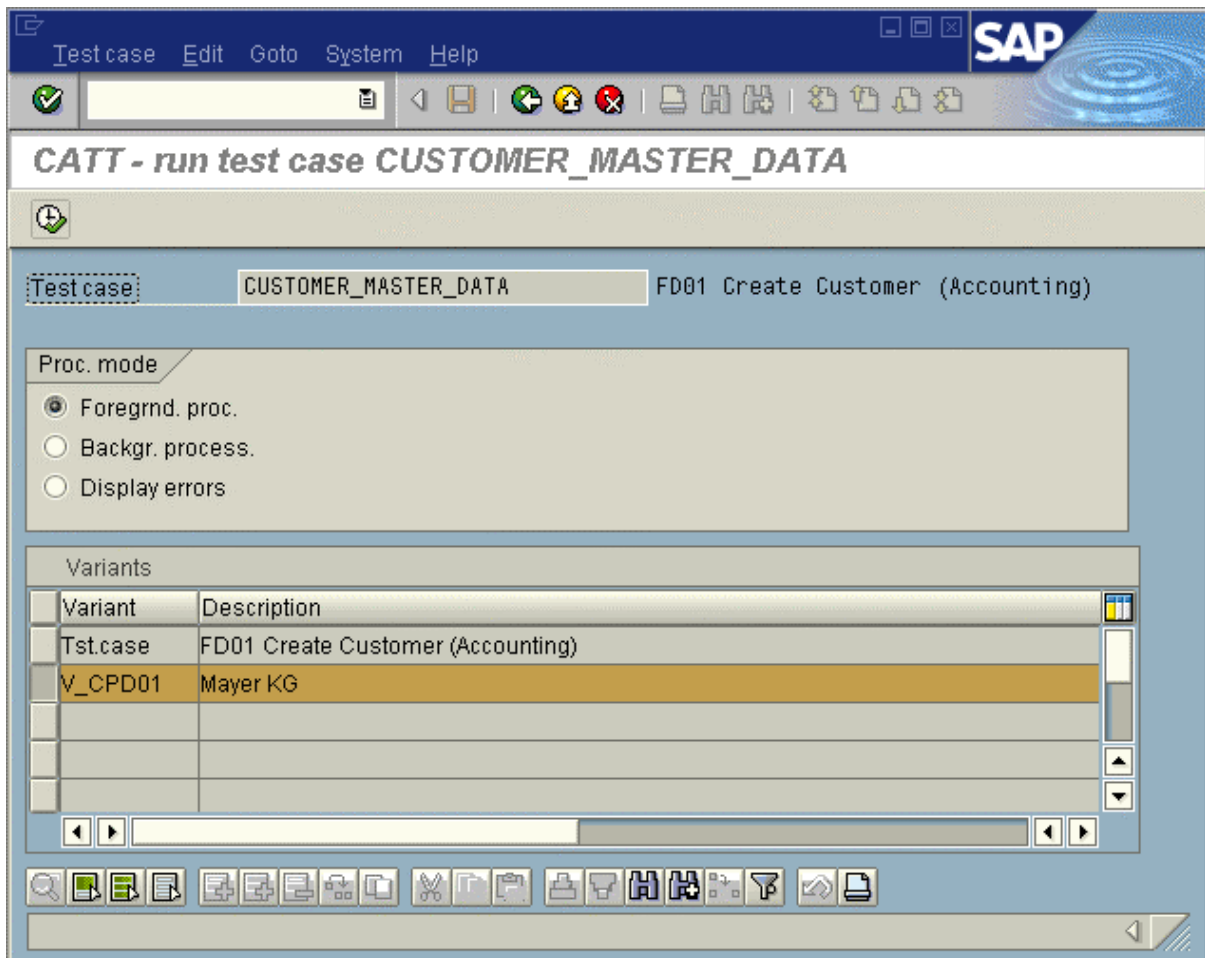
Voraussetzungen

Sie befinden sich im *CATT-Einstieg*. Sie haben die Variante *V_CPD01* angelegt.

Vorgehensweise

- Beginnen sie mit der Ausführung des Testfalles, indem sie die *Ausführen*-Drucktaste  klicken.

Sie gelangen auf folgendes Bildschirmbild:



Einsatz von Varianten beim Ausführen eines Testfalles

CATT-Testfall DEBITOR_STAMMDATEN ausführen: Die Variante *V_CPD01* wurde bereits ausgewählt. Als Abspielmodus wurde *Hell Abspielen* gewählt.

- Wählen Sie den Abspielmodus *Hell Abspielen*.
- Wählen Sie die Variante *V_CPD01* aus, indem Sie das Quadrat davor klicken.
- Führen Sie nun die Testfallvariante aus, indem Sie die *Ausführen*-Drucktaste klicken und wie üblich weiter verfahren.

Bei der Ausführung sehen Sie, daß die Werte der Variante für die Ausführung verwendet werden.

- Kehren Sie nach dem Abspielen zum *CATT-Einstieg* zurück.

Ergebnis

Sie befinden sich nun wieder im *CATT-Einstieg*; eine Variante zum Testfall DEBITOR STAMMDATEN ist angelegt. Beim Abspielen wurde ein Protokoll erzeugt.

Wiederherstellen des Systemzustandes

Wiederherstellen des Systemzustandes

Sie haben nun fast alle Schritte dieses Tutorials durchgeführt – ein letzter bleibt noch übrig: Damit die Aufgaben dieses Tutorials in gleicher Weise in der gleichen Systemumgebung erneut durchgeführt werden können, löschen Sie bitte den Testfall *DEBITOR_STAMMDATEN*.

Damit haben Sie das Durcharbeiten dieses Tutorials abgeschlossen. Sie sind nun in der Lage, das Gelernte auf die Bedürfnisse Ihrer Anwendungsdomäne anzuwenden und sich die weiteren Funktionen des CATT zu erarbeiten.

Vielen Dank für Ihre Aufmerksamkeit und viel Erfolg bei der Arbeit mit CATT!