



SAP Business Objects Enterprise .NET SDK Runtime Deployment

Copyright

© 2010 SAP AG. All rights reserved. SAP, R/3, SAP NetWeaver, Duet, PartnerEdge, ByDesign, SAP Business ByDesign, and other SAP products and services mentioned herein as well as their respective logos are trademarks or registered trademarks of SAP AG in Germany and other countries. Business Objects and the Business Objects logo, BusinessObjects, Crystal Reports, Crystal Decisions, Web Intelligence, Xcelsius, and other Business Objects products and services mentioned herein as well as their respective logos are trademarks or registered trademarks of Business Objects S.A. in the United States and in other countries. Business Objects is an SAP company. All other product and service names mentioned are the trademarks of their respective companies. Data contained in this document serves informational purposes only. National product specifications may vary. These materials are subject to change without notice. These materials are provided by SAP AG and its affiliated companies ("SAP Group") for informational purposes only, without representation or warranty of any kind, and SAP Group shall not be liable for errors or omissions with respect to the materials. The only warranties for SAP Group products and services are those that are set forth in the express warranty statements accompanying such products and services, if any. Nothing herein should be construed as constituting an additional warranty.

2010-05-24



Contents

Chapter 1	BusinessObjects Enterprise XI 3.1 .NET SDK Runtime Deployment	5
	Namespaces in boxi31_net_sdk.msi.....	7
	Deploying Crystal Reports applications	7
	Namespaces in CRRedist2008_x86.msi.....	8
	Deploying the runtime using Windows Installer.....	8
	To perform a silent installation.....	9
	Creating a new Web site deployment project.....	10
Appendix A	More Information	13
Index		17

Contents



BusinessObjects Enterprise
XI 3.1 .NET SDK Runtime
Deployment

1

chapter

The BusinessObjects Enterprise XI 3.1 .NET runtime redistributable package installs the files that are necessary to run applications that you develop with the BusinessObjects Enterprise XI 3.1 SDK. Deploy the runtime to add functionality to your custom application such as authenticating the user logons, viewing, publishing, scheduling, and listing folders and documents.

To download the runtime (boxi31_net_sdk.msi):

1. Go to <https://service.sap.com/bosap-supportsw>.
2. Under "Selection Criteria", select **BusinessObjects Enterprise > XI 3.1 > Utility**.
3. Click **Search**.
4. Under "Results", click **BusinessObjects Enterprise XI 3.1 .NET SDK Runtime** to download the zip containing the .msi file.

The runtime package provides an additional way to deploy the BusinessObjects Enterprise .NET assemblies to deploy custom BusinessObjects Enterprise applications and custom Crystal Reports Server applications. The runtime makes no changes to currently installed BusinessObjects Enterprise .NET assemblies or to their deployment.

To distribute your custom BusinessObjects Enterprise applications to target machines, those machines will need these components:

- IIS (for web applications).
- .NET Framework 1.x or 2.0.
- BusinessObjects Enterprise XI 3.1 SDK runtime.

This table shows the components that the runtime package includes:

Component	.NET Framework 1.1	.NET Framework 2.0
BusinessObjects Enterprise .NET runtime	X	X
BusinessObjects .NET Providers		X
Report Engine .NET (Web Intelligence)	X	X

Note:

The BusinessObjects Enterprise .NET SDK is also distributed with BusinessObjects Enterprise Client Tools by the installation program. And

any custom custom applications that you package with BusinessObjects Enterprise .NET runtime can also be installed and run simultaneously on the same machine as your BusinessObjects Enterprise Client Tools.

Note:

You can install the runtime without a key code; however, you will need a Central Management Server (CMS) to connect to after deploying your project.

Namespaces in boxi31_net_sdk.msi

Namespaces that are included inside the boxi31_net_sdk.msi:

- BusinessObjects.Enterprise.Admin
- BusinessObjects.Enterprise.Desktop
- BusinessObjects.Enterprise.Dest
- BusinessObjects.Enterprise.Providers
- BusinessObjects.ReportEngine
- CrystalDecisions.Enterprise
- CrystalDecisions.Enterprise.Admin
- CrystalDecisions.Enterprise.Auth
- CrystalDecisions.Enterprise.Desktop
- CrystalDecisions.Enterprise.Dest
- CrystalDecisions.Enterprise.Utils
- CrystalDecisions.Enterprise.Viewing
- CrystalDecisions.Sdk.Uri

Deploying Crystal Reports applications

If your custom application uses both the BusinessObjects Enterprise SDK (for publishing and scheduling, and so on) and Crystal Reports SDK (for viewing, printing, and report modification), you must deploy both the Business Objects Enterprise runtime and the Crystal Reports runtime packages which includes the Crystal Reports .NET and Report Application Server .NET assemblies. To download the latest Crystal Reports runtime, visit the SAP website: <https://www.sdn.sap.com/irj/sdn/businessobjects-downloads>.

For more information about building Crystal Reports applications, see the *Crystal Reports 2008 .NET Developer Guide*.

Namespaces in CRRedist2008_x86.msi

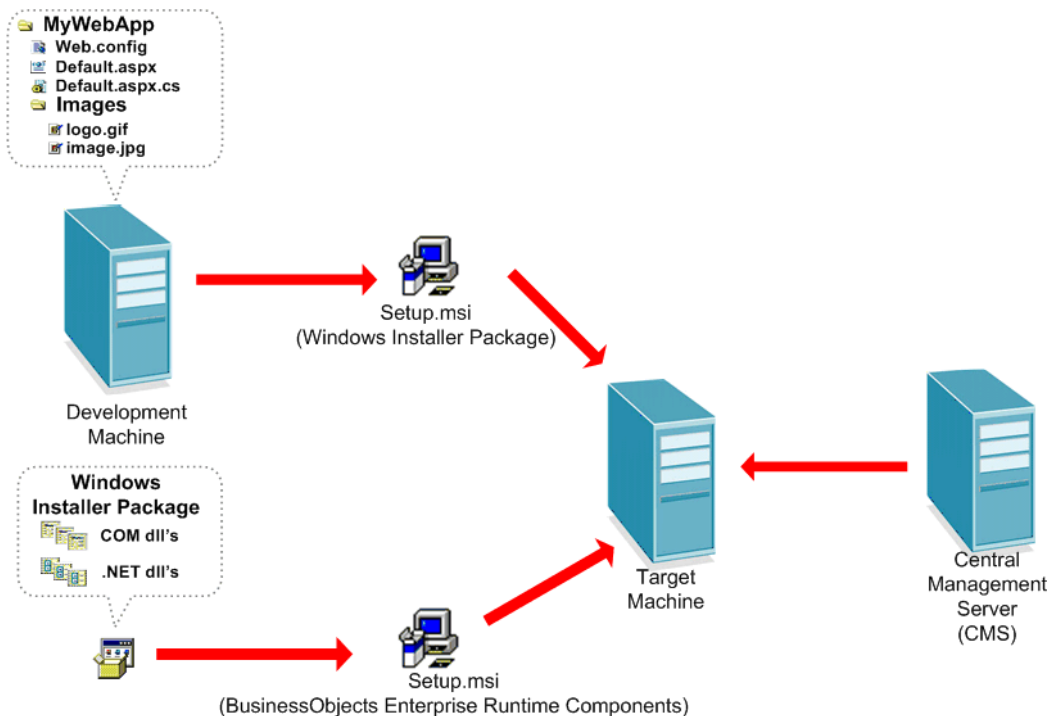
- CrystalDecisions.CrystalReports.Engine
- CrystalDecisions.CrystalReports.TemplateEngine
- CrystalDecisions.CrystalReports.ViewerObjectModel
- CrystalDecisions.ReportSource
- CrystalDecisions.ReportAppServer.ClientDoc
- CrystalDecisions.ReportAppServer.CommonObjectModel
- CrystalDecisions.ReportAppServer.Controllers
- CrystalDecisions.ReportAppServer.DataDefModel
- CrystalDecisions.ReportAppServer.ObjectFactory
- CrystalDecisions.ReportAppServer.ReportDefModel
- CrystalDecisions.ReportAppServer.Utilities
- CrystalDecisions.Shared
- CrystalDecisions.Web
- CrystalDecisions.Web.HtmlReportRender
- CrystalDecisions.Web.Services
- CrystalDecisions.Web.Services.Enterprise
- CrystalDecisions.Windows.Forms

Deploying the runtime using Windows Installer

BusinessObjects Enterprise XI 3.1 .NET SDK runtime comes in a Windows Installer (.msi) package. The .msi version is a standard Windows Installer that can be run directly or packaged as part of your application.

When you are deploying an ASP .NET Web site, the application files you include in your deployment project are the following:

- ASPX files.
- aspx.cs or aspx.vb files.
- images, HTML, or CSS files.



Windows Installer deployment components.

There are two ways to install the runtime. You can run a silent install which requires no user interaction or you can deploy it along with your Web site project.

To perform a silent installation

With a Windows Installer, you can perform a silent install on a client machine. A silent installation is an installation that is done entirely from the command line and requires no user interaction.

1. Go to the command prompt.
2. Change to the directory where BusinessObjects Enterprise XI 3.1 .NET SDK runtime Windows Installer package is located.

This tutorial assumes that the package is located at
C:\boxi31_net_sdk.msi.

3. Enter the following command: `msiexec.exe /I "C:\boxi31_net_sdk.msi" /qn.`

The application installs.

Creating a new Web site deployment project

To deploy your Web site, follow the tutorial instructions in this section.

First, you create a Web Setup Project to deploy a Web site that uses BusinessObjects Enterprise SDK in Visual Studio. Then, add output files that are necessary for the application to run. Finally, build the installer files that will deploy you Web site.

To create a web setup project for web sites

In this section, you create a Web Setup Project for web sites from the deployment projects available in Visual Studio. You must have a completed website that uses BusinessObjects Enterprise.

1. In Visual Studio, open your website.
2. In the Solution Explorer, right click the solution name, point to **Add**, then click **New Project**.
3. Navigate to the **Other Project Types** pane of the "Add New Project" dialog box and select **Setup and Deployment**.
4. In the "Templates" panel, select **Web Setup Project**.
5. Choose an appropriate name for the project and specify its location and then click **OK**.

For the purposes of this of this tutorial, the setup project is referred to by the default name WebSetup1.

6. On the "File System" tab, right-click Folder **Web Application Folder** and click **Properties Window**.
7. In the "Properties" window, set the **DefaultDocument** property to the start page (an ASPX file) for the Web site.

To add output files to the web setup project

This section adds the output files used by the Web site to the web setup project.

Note:

You must have your web site opened while trying to add project output files to the web setup project.

1. In "Solution Explorer", right-click **WebSetup1**, point to **Add**, and then click **Project Output...**
2. In the "Add Project Output Group" dialog box, select **Content Files** and **Primary output** (if available)
Leave the Configuration as (Active).

To build the web setup project

Building the Web Setup Project creates the installer files to copy to other computers. You can run either of these installers on the target computer to deploy the Web Site.

1. Change the "Solution Configuration" to **Release**.
2. In "Solution Explorer", select **WebSetup1**.
3. From the **Build** menu, click **Build WebSetup1**.

The build process creates the following files:

- setup.exe
- WebSetup1.msi

To deploy the web setup project

The application server of the target machine must be using the same version of .NET Framework as the version used to build the project.

1. Outside of Visual Studio, navigate to the directory where your deployment project has been saved.
2. Double-click the **WebSetup1** folder.
3. Open the **Release** folder to find the files that were built by the Web Setup Project.

4. Copy all the files to the target computer.
5. On the target computer, double-click **Setup.exe** or **WebSetup1.msi** to install the Web site.
6. To view the deployed Web site, open a Web browser window on the target computer. Then type `http://localhost/WebSetup1` in the address bar and replace `localhost` with the name of your server.



More Information



appendix

Information Resource	Location
SAP BusinessObjects product information	http://www.sap.com
SAP Help Portal	<p>Select http://help.sap.com > SAP BusinessObjects.</p> <p>You can access the most up-to-date documentation covering all SAP BusinessObjects products and their deployment at the SAP Help Portal. You can download PDF versions or installable HTML libraries.</p> <p>Certain guides are stored on the SAP Service Marketplace and are not available from the SAP Help Portal. These guides are listed on the Help Portal accompanied by a link to the SAP Service Marketplace. Customers with a maintenance agreement have an authorized user ID to access this site. To obtain an ID, contact your customer support representative.</p>
SAP Service Marketplace	<p>http://service.sap.com/bosap-support > Documentation</p> <ul style="list-style-type: none"> • Installation guides: https://service.sap.com/bosap-inst-guides • Release notes: http://service.sap.com/releasenotes <p>The SAP Service Marketplace stores certain installation guides, upgrade and migration guides, deployment guides, release notes and Supported Platforms documents. Customers with a maintenance agreement have an authorized user ID to access this site. Contact your customer support representative to obtain an ID. If you are redirected to the SAP Service Marketplace from the SAP Help Portal, use the menu in the navigation pane on the left to locate the category containing the documentation you want to access.</p>
Developer resources	<p>https://boc.sdn.sap.com/</p> <p>https://www.sdn.sap.com/irj/sdn/businessobjects-sdklibrary</p>

Information Resource	Location
SAP BusinessObjects articles on the SAP Community Network	https://www.sdn.sap.com/irj/boc/businessobjects-articles These articles were formerly known as technical papers.
Notes	https://service.sap.com/notes These notes were formerly known as Knowledge Base articles.
Forums on the SAP Community Network	https://www.sdn.sap.com/irj/scn/forums
Training	http://www.sap.com/services/education From traditional classroom learning to targeted e-learning seminars, we can offer a training package to suit your learning needs and preferred learning style.
Online customer support	http://service.sap.com/bosap-support The SAP Support Portal contains information about Customer Support programs and services. It also has links to a wide range of technical information and downloads. Customers with a maintenance agreement have an authorized user ID to access this site. To obtain an ID, contact your customer support representative.
Consulting	http://www.sap.com/services/bysubject/businessobjectscounseling Consultants can accompany you from the initial analysis stage to the delivery of your deployment project. Expertise is available in topics such as relational and multidimensional databases, connectivity, database design tools, and customized embedding technology.



Index

D

- deployment
 - Visual Studio 10, 11
 - output files 11
 - Web site project 10
- download location 6

R

- runtime overview 6

S

- silent install 9

W

- Windows Installer 8

Index