



# BusinessObjects LifeCycle Manager Installation Guide for XI 3.1

BusinessObjects Enterprise XI 3.1

windows



## Copyright

© 2008 Business Objects, an SAP company. All rights reserved. Business Objects owns the following U.S. patents, which may cover products that are offered and licensed by Business Objects: 5,295,243; 5,339,390; 5,555,403; 5,590,250; 5,619,632; 5,632,009; 5,857,205; 5,880,742; 5,883,635; 6,085,202; 6,108,698; 6,247,008; 6,289,352; 6,300,957; 6,377,259; 6,490,593; 6,578,027; 6,581,068; 6,628,312; 6,654,761; 6,768,986; 6,772,409; 6,831,668; 6,882,998; 6,892,189; 6,901,555; 7,089,238; 7,107,266; 7,139,766; 7,178,099; 7,181,435; 7,181,440; 7,194,465; 7,222,130; 7,299,419; 7,320,122 and 7,356,779. Business Objects and its logos, BusinessObjects, Business Objects Crystal Vision, Business Process On Demand, BusinessQuery, Cartesis, Crystal Analysis, Crystal Applications, Crystal Decisions, Crystal Enterprise, Crystal Insider, Crystal Reports, Crystal Vision, Desktop Intelligence, Inxight and its logos, LinguistX, Star Tree, Table Lens, ThingFinder, Timewall, Let There Be Light, Metify, NSite, Rapid Marts, RapidMarts, the Spectrum Design, Web Intelligence, Workmail and Xcelsius are trademarks or registered trademarks in the United States and/or other countries of Business Objects and/or affiliated companies. SAP is the trademark or registered trademark of SAP AG in Germany and in several other countries. All other names mentioned herein may be trademarks of their respective owners.

## Third-party Contributors

Business Objects products in this release may contain redistributions of software licensed from third-party contributors. Some of these individual components may also be available under alternative licenses. A partial listing of third-party contributors that have requested or permitted acknowledgments, as well as required notices, can be found at: <http://www.businessobjects.com/thirdparty>

2009-01-06



# Contents

<b>Chapter 1</b>	<b>Introduction</b>	<b>5</b>
	Overview.....	6
	About this guide.....	6
	Who should read this guide.....	6
<b>Chapter 2</b>	<b>Planning the LCM installation</b>	<b>7</b>
	System requirements.....	8
	Restrictions.....	9
<b>Chapter 3</b>	<b>Installing LCM</b>	<b>11</b>
	Installing LifeCycle Manager by using GUI.....	12
	Deploying the web application manually .....	17
	Installing LifeCycle Manager by using CLI .....	17
<b>Chapter 4</b>	<b>Configuring the Subversion repository manually</b>	<b>19</b>
<b>Chapter 5</b>	<b>Maintaining LifeCycle Manager</b>	<b>23</b>
	Preparing for uninstallation.....	24
	Uninstalling LifeCycle Manager by using GUI.....	24
	Uninstalling LifeCycle Manager by using CLI.....	25
	Uninstalling Subversion.....	26
	Repairing the LCM installation.....	26
<b>Index</b>		<b>29</b>

## Contents

Introduction

1

chapter

## Overview

### What is LifeCycle Manager

BusinessObjects LifeCycle Manager (LCM) is a web-based tool that enables you to move BI resources from one system to another system, without affecting the dependencies of these resources. It also enables you to manage different versions of BI resources, manage dependencies of BI resources, and roll back a promoted resource to restore the destination system to its previous state.

The LCM tool is a plug-in for the BusinessObjects Enterprise application. You can promote a BI resource from one system to another only if the same version of the BusinessObjects Enterprise application is installed on the source and the destination systems.

The LCM tool uses Subversion as the default version management system. Subversion is a third-party freeware. This software is integrated with the LCM installer and you need not install it separately. However, if your system already has Subversion 1.4.6 installed in it, then you can choose not to install Subversion.

## About this guide

This guide describes the various methods to install and uninstall BusinessObjects LifeCycle Manager XI 3.1. It also discusses the system requirements for installing the LCM tool.

## Who should read this guide

This guide is intended for system administrators and users who need to install the LifeCycle Manager (LCM) tool. Readers must be familiar with the overall network environment, port usage, database environment, web server software, and BusinessObjects Enterprise XI 3.1.

For more information about the LCM tool, see the *BusinessObjects LifeCycle Manager User's Guide for XI 3.1*.



# Planning the LCM installation



# 2

chapter



Before installing the LCM tool, you must determine an appropriate deployment environment. This chapter describes the prerequisites for installing and using the LifeCycle Manager tool.

## System requirements

This section describes the system requirements for installing and using the LCM tool.

### Hardware specifications

The following table lists the hardware requirements for installing and using the LCM tool:

Hardware component	Requirement
Disk space	225 MB
Memory	2 GB
Processor	32 or 64-bit (x86) AMD/Intel chipsets

### Software specifications

The following are the software requirements for installing and using the LCM tool:

- BusinessObjects Enterprise (BOE) XI 3.1 (servers) must be installed. You must also ensure that the following BusinessObjects Enterprise components are available in the system:
  - Central Management Server
  - File Repository System
  - Adaptive Processing Server
  - Web Application Server

### Supported platforms

The following versions of Microsoft Windows platform are supported:

- Windows Server 2003 SP1 (1) (2)
- Windows Server 2003 SP2 (1) (3)
- Windows Server 2003 R2 (1) (2)
- Windows Server 2008 (1) (3)

**Note:**

- (1) - Data Center Edition, Enterprise Edition, Standard Edition, Web Edition
- (2) - 32-bit O/S editions are supported
- (3) - 32-bit and 64-bit O/S editions are supported

## Restrictions

The following are not supported:

- Installing on a domain controller
- Installing on a machine whose default security settings have been modified

Important: The LCM tool must be installed on the BOE server machine. It is entirely a server installation and does not require client installation.

If there are multiple BOE server machines clustered in a network, then the user can install the LCM tool on any one of them.

If the systems are not part of a network, then the LCM tool must be installed on both machines. The user can use the LCM BIAR file option to export and import BI resources.

## 2 | Planning the LCM installation *Restrictions*



# Installing LCM



# 3 chapter

This chapter describes how to perform a full single-server installation of the BusinessObjects Enterprise LifeCycle Manager tool.

This chapter discusses the following topics:

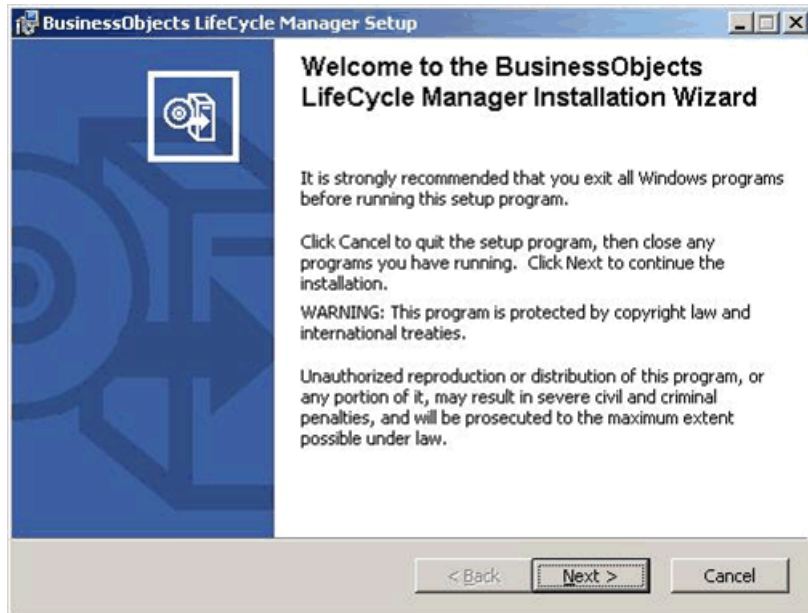
- [Installing LifeCycle Manager by using GUI](#) on page 12
- [Installing LifeCycle Manager by using CLI](#) on page 17

## Installing LifeCycle Manager by using GUI

To install the LCM tool by using the graphical user interface (GUI), complete the following steps:

1. Download the LCM tool from the Support website, and double-click the **Setup.exe** file.

The "BusinessObjects LifeCycle Manager Setup" window appears, as shown in the following figure:

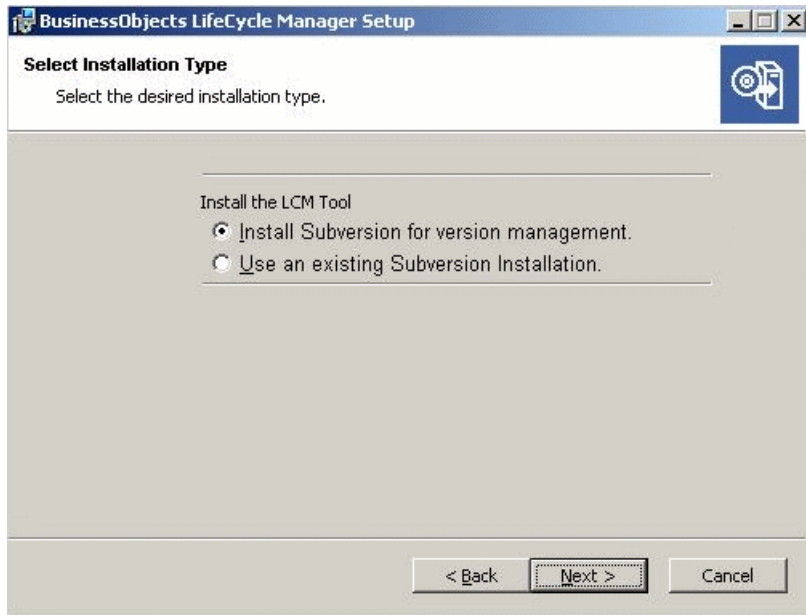


2. Click **Next**.

The "BUSINESS OBJECTS LICENSE AGREEMENT" screen appears.

3. Read and accept the license agreement by selecting the **I accept the license agreement** option, and click **Next**.

The "Select Installation Type" screen appears, as shown in the following figure:

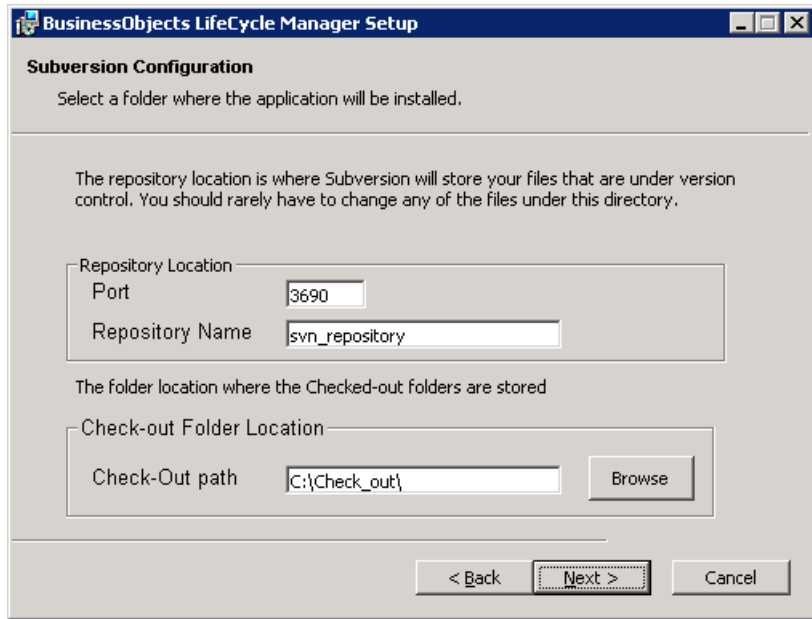


The following installation types are supported:

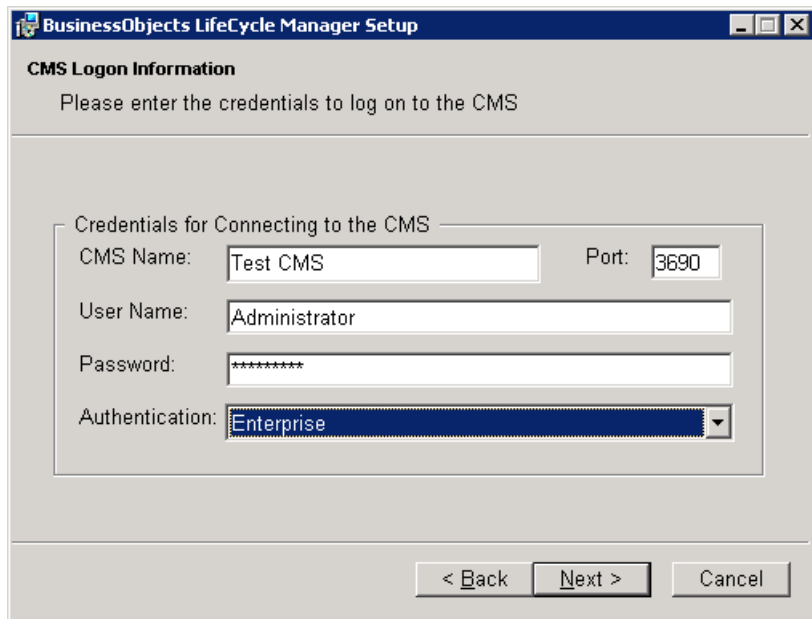
- Use an existing Subversion Installation - You can select this option, if Subversion is already installed.
- Install Subversion for Version Management - You can select this option, if Subversion is not available in the system. If you select this option, Subversion is installed along with the LCM tool.

4. Click **Next**.

The "Subversion Configuration" screen appears, as shown in the following figure:



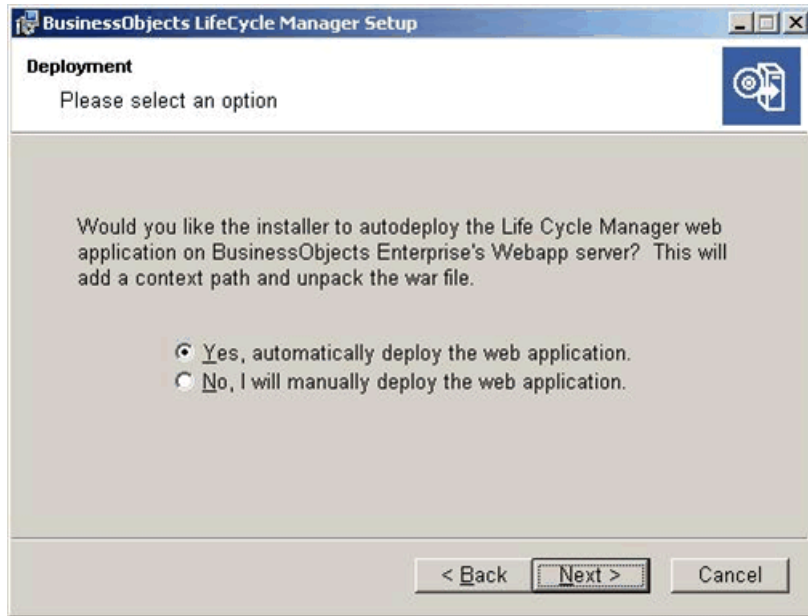
5. Select the install path location and the check-out path by using the **Browse** option.  
If the Subversion software is available in the system, you must specify its location.
6. Type the required repository name, server name, and the port number of the Subversion repository, in the appropriate fields.
7. Click **Next**.  
The "Set password for the SVN user account" screen appears.
8. Type the password in the **Password** field and the **Confirm Password** field.
9. Click **Next**.  
The "CMS Logon Information" screen appears, as shown in the following figure:



10. Type the appropriate credentials to log into the CMS.

11. Click **Next**.

The "Deployment" screen appears, as shown in the following figure:



The following options are supported:

- Yes, automatically deploy the web application - You can select this option, if you want the installer to deploy the web application automatically.

**Note:**

Auto deployment is successful only for Tomcat.

- No, I will manually deploy the web application - You can select this option, if you want to deploy the web application manually. For information on deploying the web application manually, see [Deploying the web application manually](#) on page 17.

**Note:**

For all the other supported AppServers, use wdeploy or deploy using the AppServers Admin console.

12. Select the required deployment type.
13. Click **Next**.  
The "Ready to Install the Application" screen appears.
14. Click **Next**.

The "Updating System" screen appears.

**15. Click Finish.**

The LCM tool installation process is complete.

**Note:**

Log into the Central Configuration Manager and verify that the **LCM Job Server** is running.

## Deploying the web application manually

This section describes how to deploy the web application manually.

To deploy the web application manually, complete the following steps:

**1.** In the command prompt window, type the following command:

```
<Install location>/deployment
```

where: `<Install location>` is the location of the BusinessObjects Enterprise files. For example, `C:\Program Files\Business Objects`

**2.** Type the following command:

```
wdeploy <appserverwithversion> -DAPP=LCM deploy
```

where: `<appserverwithversion>` is the name of the application server. For example, Tomcat 55 or WebLogic10.

The web application is deployed.

## Installing LifeCycle Manager by using CLI

This section describes how to install the LCM tool by using the command-line interface (CLI).

To install the LCM tool by using CLI, complete the following steps:

- 1.** Download the LCM tool from the Support website.
- 2.** Select **Start > Programs > Run**.
- 3.** Type `cmd` in the **Open** field.

The command prompt window appears.

## 3 | Installing LCM

### *Installing LifeCycle Manager by using CLI*

#### 4. Type the following command:

```
msiexec /qn /i package\lcm.msi LCMUPASSWD=123 LCM_U_PASSWD_CNFM=123 CMSAUTHENTICATION=secEnterprise NAMESERVER=bo-rm-titan NSPORT=6400 MACHINENAME=bo-rm-titan
```

The LCM tool is installed.

#### **Note:**

While installing LCM by using CLI, you can also deploy the web application manually.

#### **Related Topics**

- [Uninstalling LifeCycle Manager by using CLI](#) on page 25



# Configuring the Subversion repository manually



# 4

chapter

---

This chapter describes how to configure a new Subversion repository for LCM on an existing Subversion installation.

To configure the Subversion repository, complete the following steps:

**1. Create the Subversion (svn) repository.**

- a. To create the repository, navigate to `C:\Program Files\Subversion\bin\directory` and type the following command:

```
C:\> svnadmin create c:\<repository_path>\<repository_name>
```

A configuration subdirectory is created under the Subversion root directory.

**2. Create SVN\_USER and SVN\_PASSWORD.**

To create SVN\_USER and SVN\_PASSWORD, complete the following steps:

- a. Navigate to `<repository_path>/<repository_name>/` and open the `conf` folder.

- b. In the `conf` folder, select the `svnserve.conf` file.

- c. To enter the database credentials, add the following line:

```
password-db = passwd
```

- d. Return to the `conf` folder, and select the **passwd** file.

- e. Enter the user name and password in the following format:

```
username=password. For example, lcm=123.
```

- f. Save the changes.

The Subversion user name and password are created. To apply these changes, stop and restart Subversion. Log into the system by using the new credentials.

**3. Create the LCM service.**

To create the LCM service, complete the following steps:

- a. Navigate to the Subversion install directory. For example, `C:\Program Files\Subversion\bin`.

- b. Type the following command:

```
sc create svn binpath= "c:\Program Files\Subversion\bin\svnserve.exe --service -r c:\svn_repository" displayname= "BOE LCM subversion" depend= tcpip start= auto
```

The "BOE LCM subversion" SVN service is created in the Windows services.

- c. Select **Start > Programs > Administrative Tools > Services**, and start the "BOE LCM subversion" service.

The Subversion repository is configured.

**Note:**

Business Objects recommends that you configure port 3690 for Subversion.

To change the port number, type the following command:

```
sc create svn binpath= "C:\Program Files\Subver  
sion\bin\svnserve.exe --listen-port 3694 --service --root  
c:\svn_repository" displayname= "BOE LCM Subversion" depend=  
tcpip start= auto
```

## 4 | Configuring the Subversion repository manually



# Maintaining LifeCycle Manager



5

chapter

This chapter describes how to uninstall and repair the LCM tool.

## Preparing for uninstallation

The LCM tool retains a version of user information in the local CMS. In case the LCM tool is uninstalled and then reinstalled, the existing user information can be retrieved.

### Related Topics

- [Uninstalling LifeCycle Manager by using GUI](#) on page 24
- [Uninstalling LifeCycle Manager by using CLI](#) on page 25

## Uninstalling LifeCycle Manager by using GUI

This section describes how to uninstall the LCM tool by using the GUI.

To uninstall the LCM tool by using the GUI, complete the following steps:

1. Select **Start > Programs > Run**.
2. Type `cmd` in the **Open** field.  
The command prompt window appears.
3. If the CMS has no password, run `lcm_uninstaller.bat` available in the scripts directory at the location `\\<INSTALLDIR>\BusinessObjects Enterprise 12.0\win32_x86\scripts`.

### Note:

If the CMS has a password, run `lcm_uninstaller.bat <CMS_PASSWORD>`.

4. Stop subversion service
5. Select **Start > Settings > Control Panel**.  
The "Control Panel" window appears.
6. Select **Add or Remove Programs**.  
The "Add or Remove Programs" window appears.
7. Select **Business Objects LifeCycle Manager XI 3.1**.
8. Click **Remove**.

The "Add or Remove Programs" dialog box appears.

9. Click **Yes**.

The "BusinessObjects LifeCycle Manager XI 3.1" dialog box appears.

10. Click **Yes**.

The LCM tool is uninstalled.

**Note:**

You must uninstall Subversion separately.

**Related Topics**

- [Uninstalling Subversion](#) on page 26

## Uninstalling LifeCycle Manager by using CLI

This section describes how to uninstall the LCM tool by using the CLI.

To uninstall the LCM tool by using the CLI, complete the following steps:

1. Select **Start > Programs > Run**.

2. Type `cmd` in the **Open** field.

The command prompt window appears.

3. If the CMS has no password, run `lcm_uninstaller.bat` available in the scripts directory at the location `\\<INSTALLDIR>\BusinessObjects Enterprise 12.0\win32_x86\scripts`.

**Note:**

If the CMS has a password, run `lcm_uninstaller.bat <CMS_PASSWORD>`.

4. Type the following command:

```
Msiexec /x <lcm msi location>
```

where: `<lcm msi location>` is the location of the **lcm msi** file.

The LCM tool is uninstalled.

**Note:**

You must uninstall Subversion separately.

#### Related Topics

- [Uninstalling Subversion](#) on page 26

## Uninstalling Subversion

To uninstall Subversion, complete the following steps:

1. Select **Start > Programs > Subversion > Uninstall Subversion**.

The "Subversion Uninstall" dialog box appears.

2. Click **Yes**.

Subversion is uninstalled.

## Repairing the LCM installation

The LCM tool enables you to repair a corrupt installation.

To repair a corrupt LCM installation, complete the following steps:

1. Select **Start > Programs > Run**.

2. Type `cmd` in the **Open** field.

The command prompt window appears.

3. If the CMS has no password, run `lcm_repair.bat` available in the scripts directory at the location `\\<INSTALLDIR>\BusinessObjects Enterprise 12.0\win32_x86\scripts`.

#### Note:

If the CMS has a password, run `lcm_repair.bat <CMS_PASSWORD>`.

4. Double-click the LCM **Setup.exe** file.

The LCM Installation window is displayed.

5. Select **Repair** to repair the existing LCM installation.

The "Ready to Repair" window is displayed.

The existing LCM installation is repaired. If the issue persists, you must uninstall and reinstall the LCM tool.

#### Related Topics

- [Uninstalling LifeCycle Manager by using GUI](#) on page 24

- [Uninstalling LifeCycle Manager by using CLI](#) on page 25



# Index

## C

- command-line interface [25](#)
- Configuring the Subversion repository
  - manual configuration [20](#)
- Create the LCM service [20](#)

## L

- LCM
  - installing using CLI [17](#)
  - installing using GUI [12](#)
  - modifying the LCM installation [26](#)
  - preparing for uninstallation [24](#)
  - Repair option [26](#)
  - repairing the LCM installation [26](#)
  - Uninstalling LCM [24](#)
    - uninstalling using CLI [25](#)
    - uninstalling using GUI [24](#)
- LCM overview [6](#)

## O

- Overview
  - LCM tool [6](#)

## R

- Restrictions [9](#)

## S

- Subversion [20](#)
  - uninstalling [26](#)
- Subversion repository [20](#)
- SVN\_PASSWORD [20](#)
- SVN\_USER [20](#)
- System requirements
  - Hardware specifications [8](#)
  - install options that are not supported [9](#)
  - Software specifications [8](#)
  - Supported platforms [8](#)
  - Windows support [8](#)

## Index