



Business Objects Enterprise XI 3.1 .NET SDK Runtime Deployment

Copyright

© 2008 Business Objects, an SAP company. All rights reserved. Business Objects owns the following U.S. patents, which may cover products that are offered and licensed by Business Objects: 5,295,243; 5,339,390; 5,555,403; 5,590,250; 5,619,632; 5,632,009; 5,857,205; 5,880,742; 5,883,635; 6,085,202; 6,108,698; 6,247,008; 6,289,352; 6,300,957; 6,377,259; 6,490,593; 6,578,027; 6,581,068; 6,628,312; 6,654,761; 6,768,986; 6,772,409; 6,831,668; 6,882,998; 6,892,189; 6,901,555; 7,089,238; 7,107,266; 7,139,766; 7,178,099; 7,181,435; 7,181,440; 7,194,465; 7,222,130; 7,299,419; 7,320,122 and 7,356,779. Business Objects and its logos, BusinessObjects, Business Objects Crystal Vision, Business Process On Demand, BusinessQuery, Cartesis, Crystal Analysis, Crystal Applications, Crystal Decisions, Crystal Enterprise, Crystal Insider, Crystal Reports, Crystal Vision, Desktop Intelligence, Inxight and its logos, LinguistX, Star Tree, Table Lens, ThingFinder, Timewall, Let There Be Light, Metify, NSite, Rapid Marts, RapidMarts, the Spectrum Design, Web Intelligence, Workmail and Xcelsius are trademarks or registered trademarks in the United States and/or other countries of Business Objects and/or affiliated companies. SAP is the trademark or registered trademark of SAP AG in Germany and in several other countries. All other names mentioned herein may be trademarks of their respective owners.

Third-party Contributors

Business Objects products in this release may contain redistributions of software licensed from third-party contributors. Some of these individual components may also be available under alternative licenses. A partial listing of third-party contributors that have requested or permitted acknowledgments, as well as required notices, can be found at: <http://www.businessobjects.com/thirdparty>

2008-12-03



Contents

Chapter 1	BusinessObjects Enterprise XI 3.1 .NET SDK Runtime Deployment	5
	Namespaces in boxi31_net_sdk.msi.....	7
	Deploying Crystal Reports applications	7
	Namespaces in CRRedist2008_x86.msi.....	8
	Deploying the runtime using Windows Installer.....	8
	To perform a silent installation.....	9
	Creating a new Web site deployment project.....	10
Appendix A	Get More Help	13
Index		17

Contents



BusinessObjects Enterprise
XI 3.1 .NET SDK Runtime
Deployment

1

chapter

The BusinessObjects Enterprise XI 3.1 .NET runtime redistributable package installs the files that are necessary to run applications that you develop with the BusinessObjects Enterprise XI 3.1 SDK. Deploy the runtime to add functionality to your custom application such as authenticating the user logons, viewing, publishing, scheduling, and listing folders and documents.

To download the runtime (boxi31_net_sdk.msi):

1. Go to <https://service.sap.com/bosap-supportsw>.
2. Under "Selection Criteria", select **BusinessObjects Enterprise > XI 3.1 > Utility**.
3. Click **Search**.
4. Under "Results", click **BusinessObjects Enterprise XI 3.1 .NET SDK Runtime** to download the zip containing the .msi file.

The runtime package provides an additional way to deploy the BusinessObjects Enterprise .NET assemblies to deploy custom BusinessObjects Enterprise applications and custom Crystal Reports Server applications. The runtime makes no changes to currently installed BusinessObjects Enterprise .NET assemblies or to their deployment.

To distribute your custom BusinessObjects Enterprise applications to target machines, those machines will need these components:

- IIS (for web applications).
- .NET Framework 1.x or 2.0.
- BusinessObjects Enterprise XI 3.1 SDK runtime.

This table shows the components that the runtime package includes:

Component	.NET Framework 1.1	.NET Framework 2.0
BusinessObjects Enterprise .NET runtime	X	X
BusinessObjects .NET Providers		X
Report Engine .NET (Web Intelligence)	X	X

Note:

The BusinessObjects Enterprise .NET SDK is also distributed with BusinessObjects Enterprise Client Tools by the installation program. And

any custom custom applications that you package with BusinessObjects Enterprise .NET runtime can also be installed and run simultaneously on the same machine as your BusinessObjects Enterprise Client Tools.

Note:

You can install the runtime without a key code; however, you will need a Central Management Server (CMS) to connect to after deploying your project.

Namespaces in boxi31_net_sdk.msi

Namespaces that are included inside the boxi31_net_sdk.msi:

- BusinessObjects.Enterprise.Admin
- BusinessObjects.Enterprise.Desktop
- BusinessObjects.Enterprise.Dest
- BusinessObjects.Enterprise.Providers
- BusinessObjects.ReportEngine
- CrystalDecisions.Enterprise
- CrystalDecisions.Enterprise.Admin
- CrystalDecisions.Enterprise.Auth
- CrystalDecisions.Enterprise.Desktop
- CrystalDecisions.Enterprise.Dest
- CrystalDecisions.Enterprise.Utils
- CrystalDecisions.Enterprise.Viewing
- CrystalDecisions.Sdk.Uri

Deploying Crystal Reports applications

If your custom application uses both the BusinessObjects Enterprise SDK (for publishing and scheduling, and so on) and Crystal Reports SDK (for viewing, printing, and report modification), you must deploy both the Business Objects Enterprise runtime and the Crystal Reports runtime packages which includes the Crystal Reports .NET and Report Application Server .NET assemblies. To download the latest Crystal Reports runtime, visit the SAP website: <https://www.sdn.sap.com/irj/sdn/businessobjects-downloads>.

For more information about building Crystal Reports applications, see the *Crystal Reports 2008 .NET Developer Guide*.

Namespaces in CRRedist2008_x86.msi

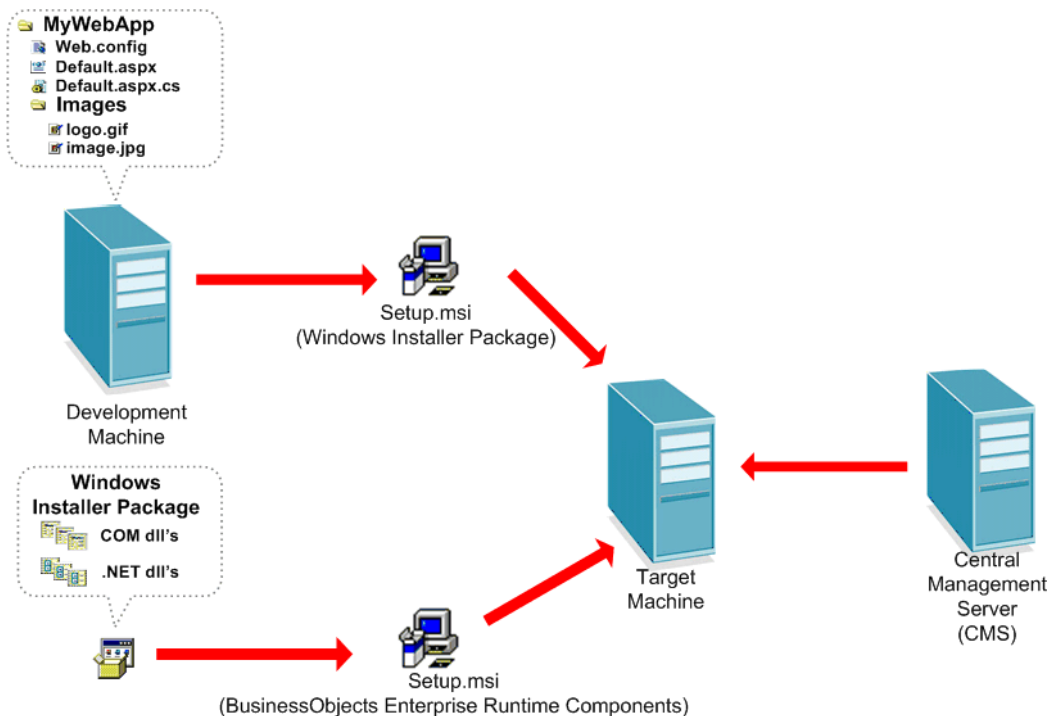
- CrystalDecisions.CrystalReports.Engine
- CrystalDecisions.CrystalReports.TemplateEngine
- CrystalDecisions.CrystalReports.ViewerObjectModel
- CrystalDecisions.ReportSource
- CrystalDecisions.ReportAppServer.ClientDoc
- CrystalDecisions.ReportAppServer.CommonObjectModel
- CrystalDecisions.ReportAppServer.Controllers
- CrystalDecisions.ReportAppServer.DataDefModel
- CrystalDecisions.ReportAppServer.ObjectFactory
- CrystalDecisions.ReportAppServer.ReportDefModel
- CrystalDecisions.ReportAppServer.Utilities
- CrystalDecisions.Shared
- CrystalDecisions.Web
- CrystalDecisions.Web.HtmlReportRender
- CrystalDecisions.Web.Services
- CrystalDecisions.Web.Services.Enterprise
- CrystalDecisions.Windows.Forms

Deploying the runtime using Windows Installer

BusinessObjects Enterprise XI 3.1 .NET SDK runtime comes in a Windows Installer (.msi) package. The .msi version is a standard Windows Installer that can be run directly or packaged as part of your application.

When you are deploying an ASP .NET Web site, the application files you include in your deployment project are the following:

- ASPX files.
- aspx.cs or aspx.vb files.
- images, HTML, or CSS files.



Windows Installer deployment components.

There are two ways to install the runtime. You can run a silent install which requires no user interaction or you can deploy it along with your Web site project.

To perform a silent installation

With a Windows Installer, you can perform a silent install on a client machine. A silent installation is an installation that is done entirely from the command line and requires no user interaction.

1. Go to the command prompt.
2. Change to the directory where BusinessObjects Enterprise XI 3.1 .NET SDK runtime Windows Installer package is located.

This tutorial assumes that the package is located at

C:\boxi31_net_sdk.msi.

3. Enter the following command: `msiexec.exe /I "C:\boxi31_net_sdk.msi" /qn.`

The application installs.

Creating a new Web site deployment project

To deploy your Web site, follow the tutorial instructions in this section.

First, you create a Web Setup Project to deploy a Web site that uses BusinessObjects Enterprise SDK in Visual Studio. Then, add output files that are necessary for the application to run. Finally, build the installer files that will deploy you Web site.

To create a web setup project for web sites

In this section, you create a Web Setup Project for web sites from the deployment projects available in Visual Studio. You must have a completed website that uses BusinessObjects Enterprise.

1. In Visual Studio, open your website.
2. In the Solution Explorer, right click the solution name, point to **Add**, then click **New Project**.
3. Navigate to the **Other Project Types** pane of the "Add New Project" dialog box and select **Setup and Deployment**.
4. In the "Templates" panel, select **Web Setup Project**.
5. Choose an appropriate name for the project and specify its location and then click **OK**.

For the purposes of this of this tutorial, the setup project is referred to by the default name WebSetup1.

6. On the "File System" tab, right-click Folder **Web Application Folder** and click **Properties Window**.
7. In the "Properties" window, set the **DefaultDocument** property to the start page (an ASPX file) for the Web site.

To add output files to the web setup project

This section adds the output files used by the Web site to the web setup project.

Note:

You must have your web site opened while trying to add project output files to the web setup project.

1. In "Solution Explorer", right-click **WebSetup1**, point to **Add**, and then click **Project Output...**
2. In the "Add Project Output Group" dialog box, select **Content Files** and **Primary output** (if available)
Leave the Configuration as (Active).

To build the web setup project

Building the Web Setup Project creates the installer files to copy to other computers. You can run either of these installers on the target computer to deploy the Web Site.

1. Change the "Solution Configuration" to **Release**.
2. In "Solution Explorer", select **WebSetup1**.
3. From the **Build** menu, click **Build WebSetup1**.

The build process creates the following files:

- setup.exe
- WebSetup1.msi

To deploy the web setup project

The application server of the target machine must be using the same version of .NET Framework as the version used to build the project.

1. Outside of Visual Studio, navigate to the directory where your deployment project has been saved.
2. Double-click the **WebSetup1** folder.
3. Open the **Release** folder to find the files that were built by the Web Setup Project.

4. Copy all the files to the target computer.
5. On the target computer, double-click **Setup.exe** or **WebSetup1.msi** to install the Web site.
6. To view the deployed Web site, open a Web browser window on the target computer. Then type `http://localhost/WebSetup1` in the address bar and replace `localhost` with the name of your server.



Get More Help



appendix

Online documentation library

Business Objects offers a full documentation set covering all products and their deployment. The online documentation library has the most up-to-date version of the Business Objects product documentation. You can browse the library contents, do full-text searches, read guides on line, and download PDF versions. The library is updated regularly with new content as it becomes available.

To access the online documentation library, visit <http://help.sap.com/> and click **Business Objects** at the top of the page.

Additional developer resources

<https://boc.sdn.sap.com/developer/library/>

Online customer support

The Business Objects Customer Support web site contains information about Customer Support programs and services. It also has links to a wide range of technical information including knowledgebase articles, downloads, and support forums.

<http://www.businessobjects.com/support/>

Looking for the best deployment solution for your company?

Business Objects consultants can accompany you from the initial analysis stage to the delivery of your deployment project. Expertise is available in relational and multidimensional databases, in connectivities, database design tools, customized embedding technology, and more.

For more information, contact your local sales office, or contact us at:

<http://www.businessobjects.com/services/consulting/>

Looking for training options?

From traditional classroom learning to targeted e-learning seminars, we can offer a training package to suit your learning needs and preferred learning style. Find more information on the Business Objects Education web site:

<http://www.businessobjects.com/services/training>

Send us your feedback

Do you have a suggestion on how we can improve our documentation? Is there something you particularly like or have found useful? Drop us a line, and we will do our best to ensure that your suggestion is included in the next release of our documentation:

documentation@businessobjects.com

Note:

If your issue concerns a Business Objects product and not the documentation, please contact our Customer Support experts. For information about Customer Support visit: <http://www.businessobjects.com/support/>.

Business Objects product information

For information about the full range of Business Objects products, visit: <http://www.businessobjects.com>.



Index

D

- deployment
 - Visual Studio
 - output files [11](#)
 - Web site project [10](#)
 - download location [6](#)

R

- runtime overview [6](#)

S

- silent install [9](#)

W

- Windows Installer [8](#)

Index