

SAP Fiori Client 1.2
Document Version: 2.0 – 2015-02-08

User Guide



Content

1	Introduction.	3
1.1	Introduction.	3
2	Native Device Features.	4
2.1	Native Device Features.	4
3	Prerequisites.	5
3.1	Prerequisites.	5
4	Installing the Application.	6
4.1	Installing the Application.	6
5	Launching the Application.	7
5.1	Launching the Application.	7
	SAP Fiori URL.	7
	Passcode Screen.	8
	SAP Fiori Logon.	9
6	Settings Screen.	11
6.1	Settings Screen.	11
	Android.	11
	iOS.	13
	Logging Settings.	13
7	Using the SAP Fiori Client.	15
7.1	Using the SAP Fiori Client.	15
	Navigation.	15
	File Attachment Handling.	16
8	Security Configuration.	17
8.1	Security Configuration.	17
	Authentication and Certificate Requirements.	17
	Installing a Certificate on an iOS Device.	17
	Installing a Certificate on an Android Device Using Windows.	19
9	Troubleshooting.	21

1 Introduction

1.1 Introduction

SAP Fiori is a collection of Web applications that are designed to run on desktop and mobile. This means that a single instance of the application supports end users regardless of the device they are using.

SAP created the SAP Fiori Client to provide Fiori applications:

- additional native capabilities (such as Camera, Barcode Scanner, etc.) on top of what a typical browser provides
- management of the local web cache better when new versions of the application are released by the Fiori server
- additional security to protect the application from unauthorized access
- provisioning the user certificate through Mobile Secure and SAP Mobile Platform

This guide shows you how to configure and use the SAP Fiori Client on your device.

2 Native Device Features

2.1 Native Device Features

SAP Fiori Client 1.2 provides Fiori web applications with native device features such as camera and barcode scanning support.

3 Prerequisites

3.1 Prerequisites

The SAP Fiori Client has these prerequisites:

- The application currently supports devices running Android 4.1.3 through 5.0, and iOS 7.1, 7.1.1, 7.1.2, 8.1, 8.1.1, and 8.2.
- The application requires that certain back-end and front-end components are available in your system landscape. For details, see *System Landscape Required for SAP Fiori* at <http://help.sap.com/fiori>. For prerequisites when using the SAP Mobile Platform Server, see *Installation Requirements (Transactional Apps) in Integration of SAP Mobile Platform into SAP Fiori Landscape*.

4 Installing the Application

4.1 Installing the Application

The SAP Fiori Client is a native application that must be installed on your device. The installation may be performed automatically by a system administrator, or you can download the application directly from your device's app store. The application installs the SAP Fiori Client application icon on your device's home screen:



5 Launching the Application

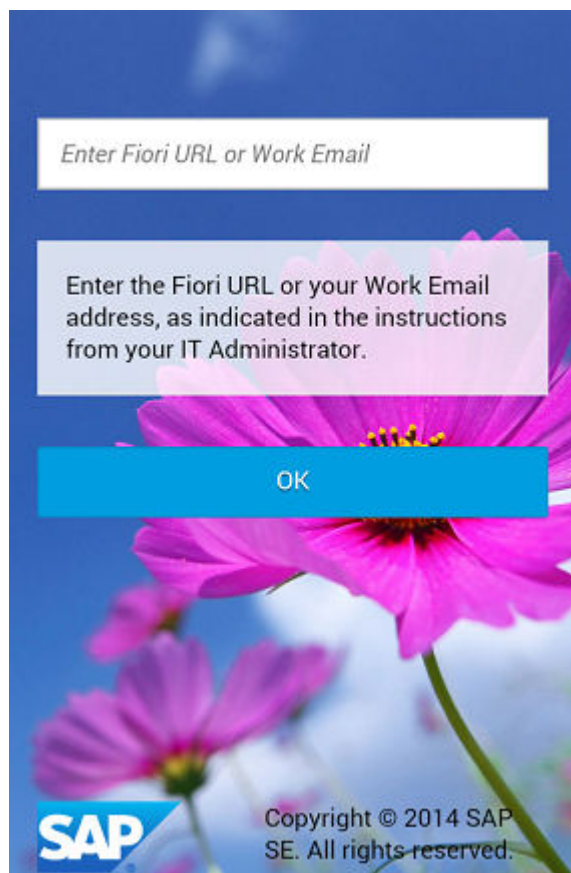
5.1 Launching the Application

Launch the application by tapping the application icon.

5.1.1 SAP Fiori URL

If your system administrator has not automatically configured the SAP Fiori Client, you will be prompted to enter the SAP Fiori URL or an Email address that will be used to fetch application settings from SAP Mobile Secure.

Enter the *SAP Fiori URL* or *Work Email* provided by your system administrator.



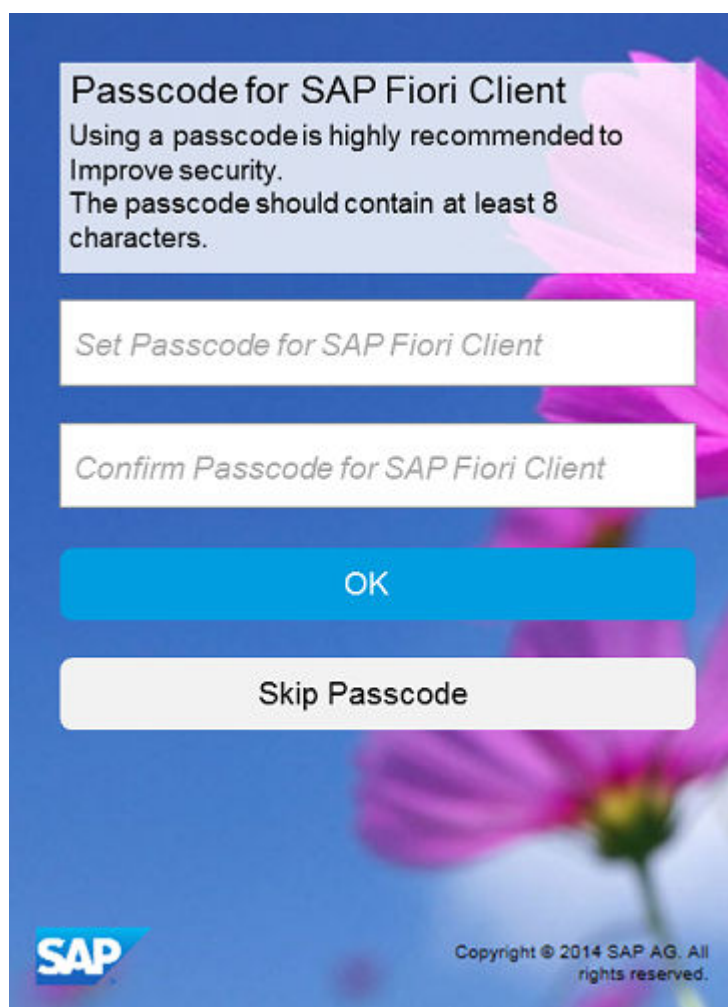
5.1.2 Passcode Screen

The Set Passcode screen allows you to set an application passcode to protect the application from unauthorized access.

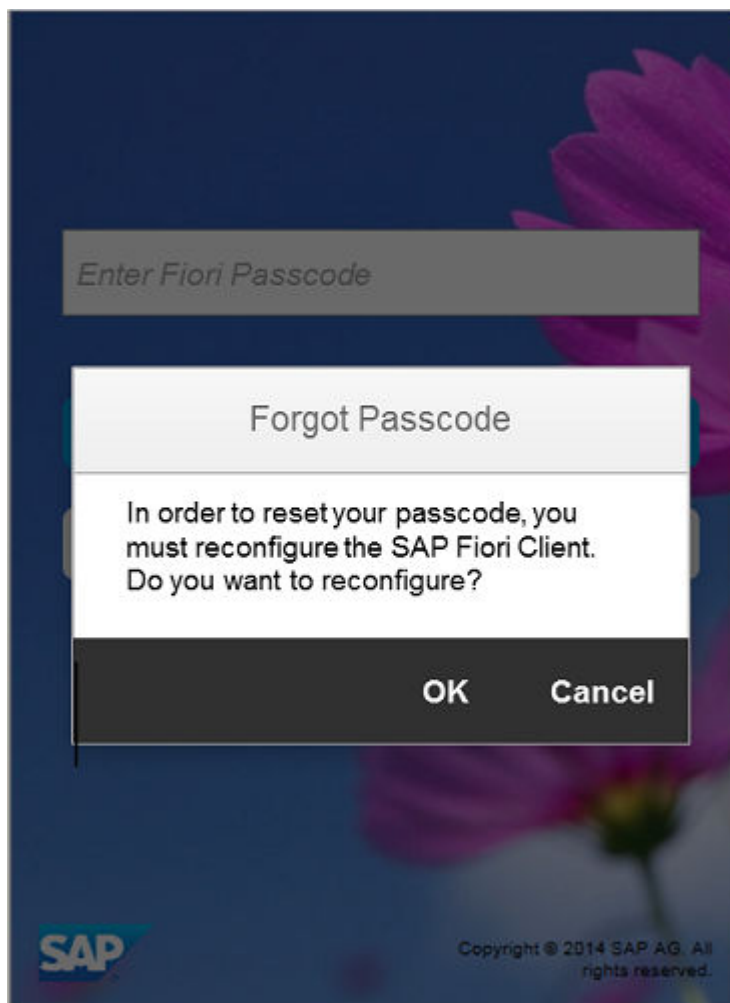
The application uses the following default passcode settings:

- Accepts upper and lower case alphanumeric characters
- Passcode can be disabled by the user (on first use only)
- A minimum length of 8 characters
- A passcode lockout period of 5 minutes

These settings can be overridden by the application's administrator.

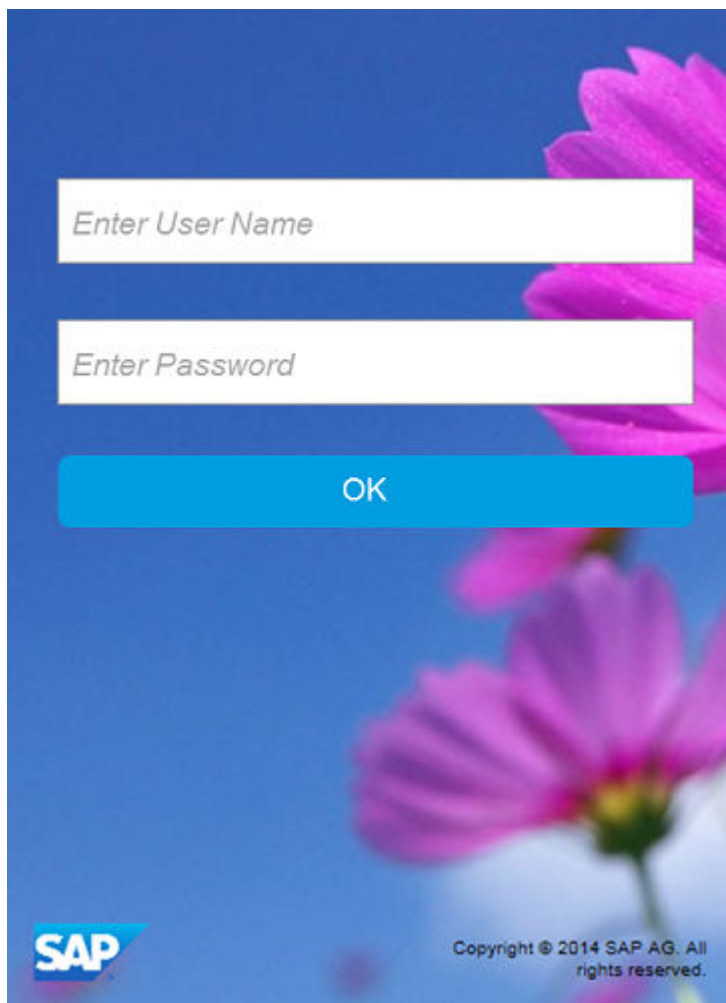


If you forget the application passcode, you can tap the Forgot Passcode button to reset the passcode. This will reset the application and user configuration. You will not be able to access SAP Fiori using the SAP Fiori Client until you have reconfigured the application.



5.1.3 SAP Fiori Logon

After configuring the application for your Fiori environment, when you start the application, you see the SAP Fiori Client logon screen. At this point, you must type your user name and password then tap [OK](#) to access your SAP Fiori applications.



6 Settings Screen

6.1 Settings Screen

The Settings screen allows you to:

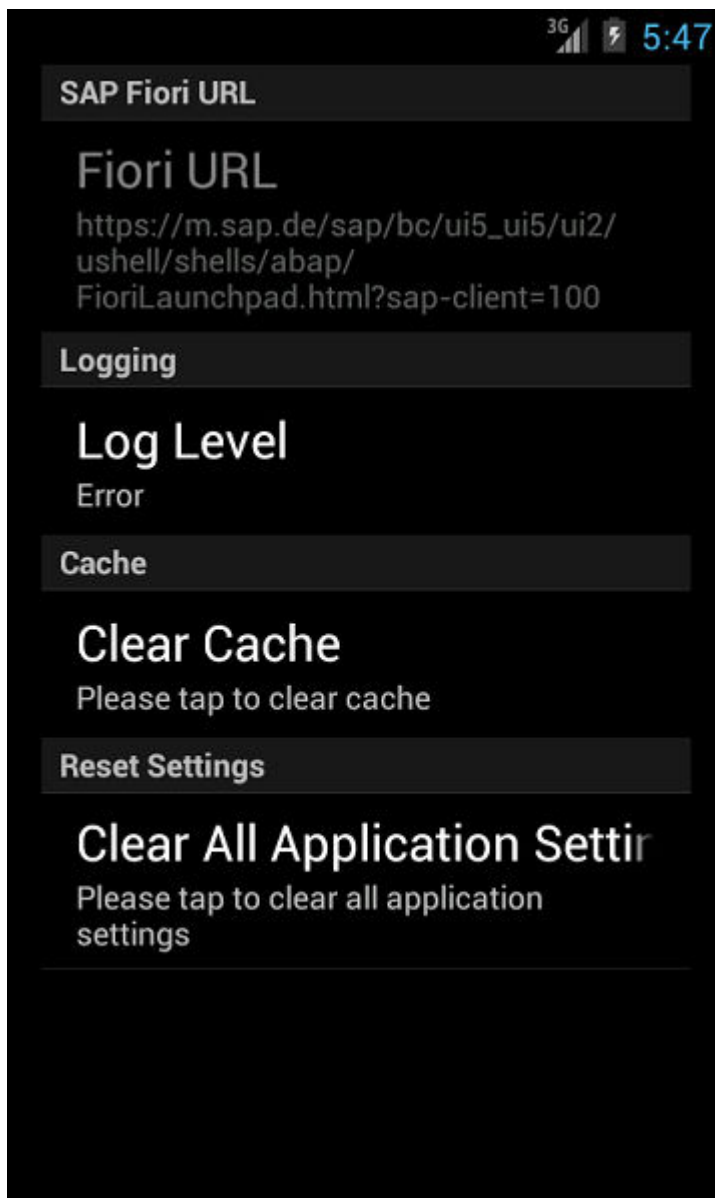
- Clear the application cache. You would use this option to resolve content rendering issues within the application.
- Set the application log level. You may be instructed to adjust the log level by the administrator / customer support professional.
- Reset the application configuration. This is used to reset application settings and is the only way to edit the Fiori URL.

6.1.1 Android

Newer Android devices do not expose a menu button, so on these devices, double-tapping a blank area of the application will open the toolbar.



When you tap the three dots aligned in a vertical bar on the right side of the toolbar; the application opens a popup menu. Tap the Settings menu to display the SAP Fiori Client settings screen.



Older Android devices expose a menu button a user can tap to display application options. On these devices, when you tap the menu button the device opens a pop-up menu above the button. Tap the Settings menu item that appears to open the settings screen.

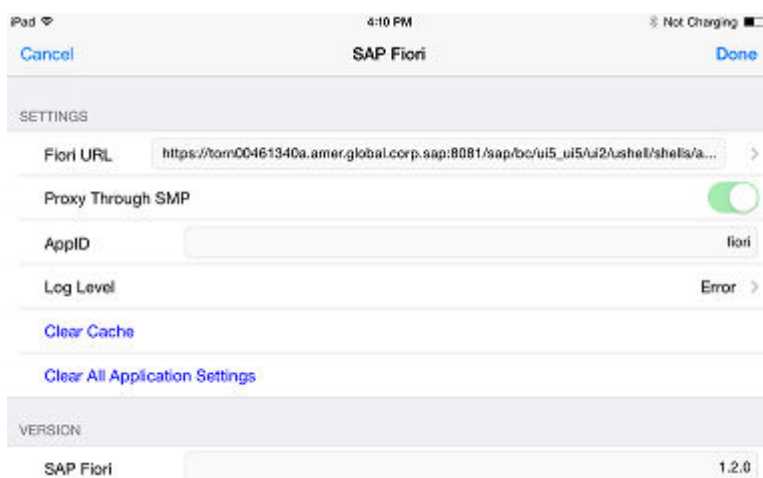
To resolve content rendering issues within the application, you would tap [Clear Cache](#) to clear the application cache.

The value in the Fiori URL field tells the application how to access the Fiori server. You cannot edit this URL directly; to change the URL configuration you will need to reset the application by tapping [Clear All Application Settings](#). You will do this when the Fiori URL changes or to reset the application state if it is corrupted and cannot be restored. Changing the SAP Fiori URL invalidates all of the application's stored content including the cache of web application assets and all user credentials.

The remaining fields on the Settings screen are for testing and debugging purposes and are described in the following sections.

6.1.2 iOS

The Settings screen can be accessed by tapping on the Settings button on the toolbar, which can be opened by double tapping on the application view.



To resolve content rendering issues within the application, you would tap [Clear Cache](#) to clear the application cache.

The value in the Fiori URL field tells the application how to access the Fiori server. You cannot edit this URL directly; to change the URL configuration you will need to reset the application by tapping [Clear All Application Settings](#). You will do this when the Fiori URL changes or to reset the application state if it is corrupted and cannot be restored. Changing the SAP Fiori URL invalidates all of the application's stored content including the cache of web application assets and all user credentials.

The remaining fields on the Settings screen are for testing and debugging purposes and are described in the following sections.

6.1.3 Logging Settings

The SAP Fiori Client application can log and display detailed information about its operation.

You can set the application's log level by tapping the current log level then selecting from one of the following options:

Error instructs the application to write only error messages to the log.

Warn instructs the application to write only error and warning condition messages to the log.

Info instructs the application to write errors and some additional information to the log.

Debug instructs the application to write detailed information (including errors) to the log. This option generates the most information about the application's operation and may slow application performance more than the other options.

Once the application has been operating at a certain log level, the log will show all relevant log entries.

SAP Fiori Client provides a log viewer to display the log file, or to email it to the administrator or custom support to help with troubleshooting.

To access the log viewer on the device, select the [View Log](#) menu item from the toolbar.

You can select [Email Log](#) to email the log. Enter the email address of your administrator, and send the email.

7 Using the SAP Fiori Client

7.1 Using the SAP Fiori Client

Once configured to connect to the appropriate Fiori server, the application renders the Fiori application content just as it does within the mobile browser. Navigation between Fiori apps is handled by the Fiori Launchpad runtime. There are, however, some navigational capabilities provided by the SAP Fiori Client, which are described in the following sections.

7.1.1 Navigation

If any of the web application content in the application isn't rendering correctly or the server becomes unresponsive, you can use the Refresh option on the toolbar to reload the page. Double-tap the application screen to open the toolbar then tap the Refresh button to reload the page. On Android, the toolbar appears at the top of the page, on iOS, the toolbar appears at the bottom or middle of the screen.



Now tapping on the Home icon will navigate to the configured Fiori URL.



Tapping the Refresh icon will reload the current page.



Tapping the Back icon will navigate to the previous page within the SAP Fiori application.



7.1.2 File Attachment Handling

In the SAP Fiori Client for iOS, attachments open within the application context, instead of opening a separate application. On dismissing the attachment view, the user returns to the original application view. This provides a more smooth transition between the application and the attachment view.

On Android, file attachments are opened using an external viewer application where possible. Certain file types, such as .png images are opened directly in the application. For other file types, the file is downloaded locally before you can view the attachment.

Any attachments downloaded for viewing will be deleted by the application after viewing.

8 Security Configuration

8.1 Security Configuration

The SAP Fiori Launchpad and associated Web applications manage the logon process as well as access to data. You may be required to enter Fiori username and password, or select a user certificate.

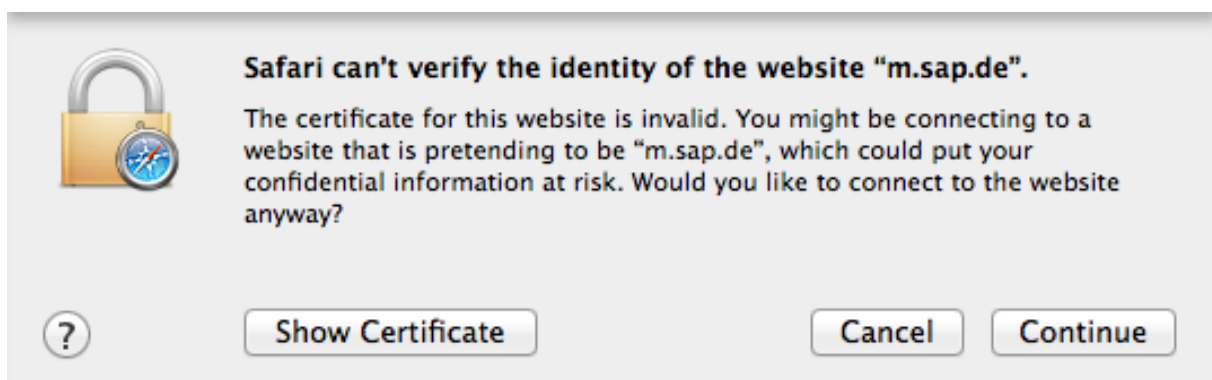
8.1.1 Authentication and Certificate Requirements

SAP Fiori Client supports HTTP and HTTPS protocols. The application supports Basic authentication and mutual authentication.

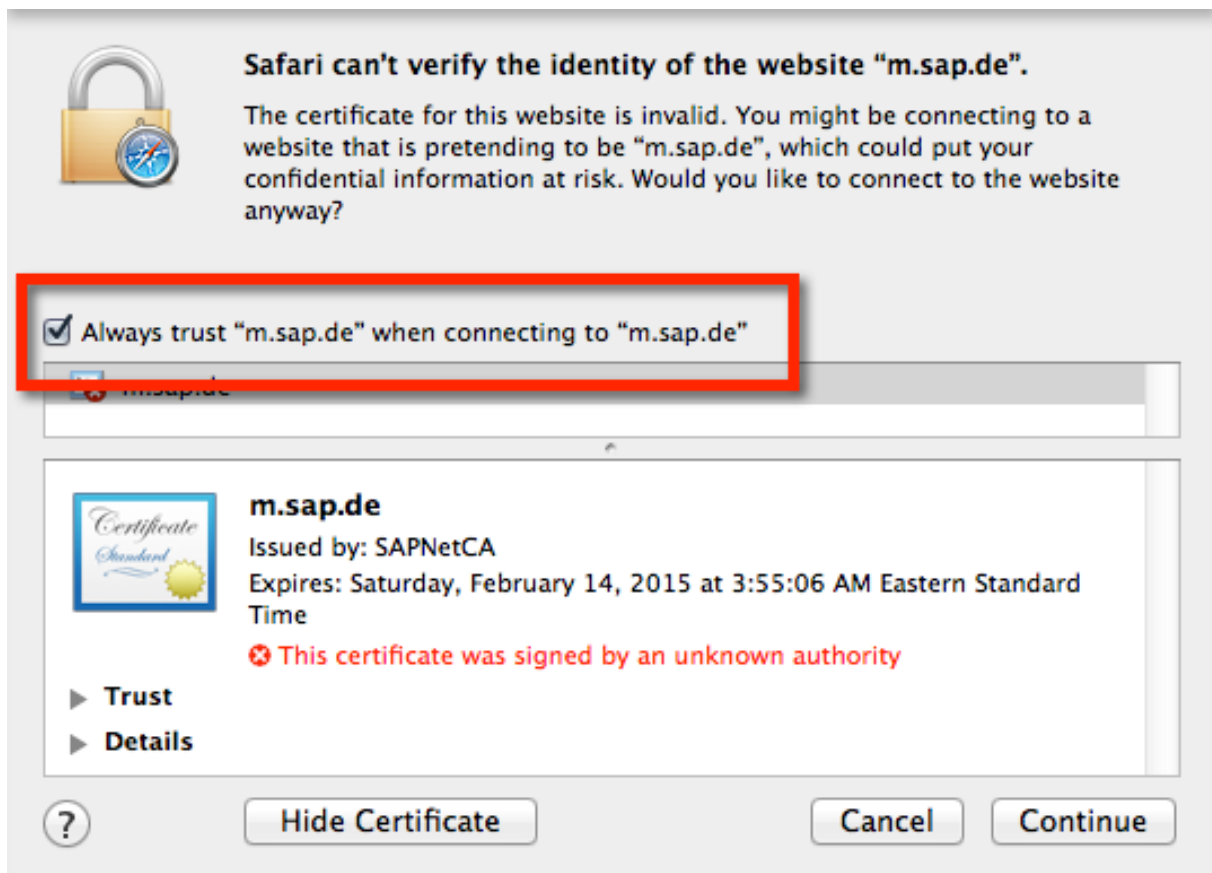
If the certificate error dialog appears, this indicates that the certificate authority used by the Fiori server is not trusted by the device. To correct this, determine the certificate authority used and then if needed add it to your device's list of trusted certificates as instructed below. Also, the SAP Fiori Client does not operate in an environment where a self-signed SSL certificate is used to configure the Fiori server.

8.1.2 Installing a Certificate on an iOS Device

Open the Safari desktop browser and navigate to the Fiori URL. In the dialog that appears, click the [Show Certificate](#) button.

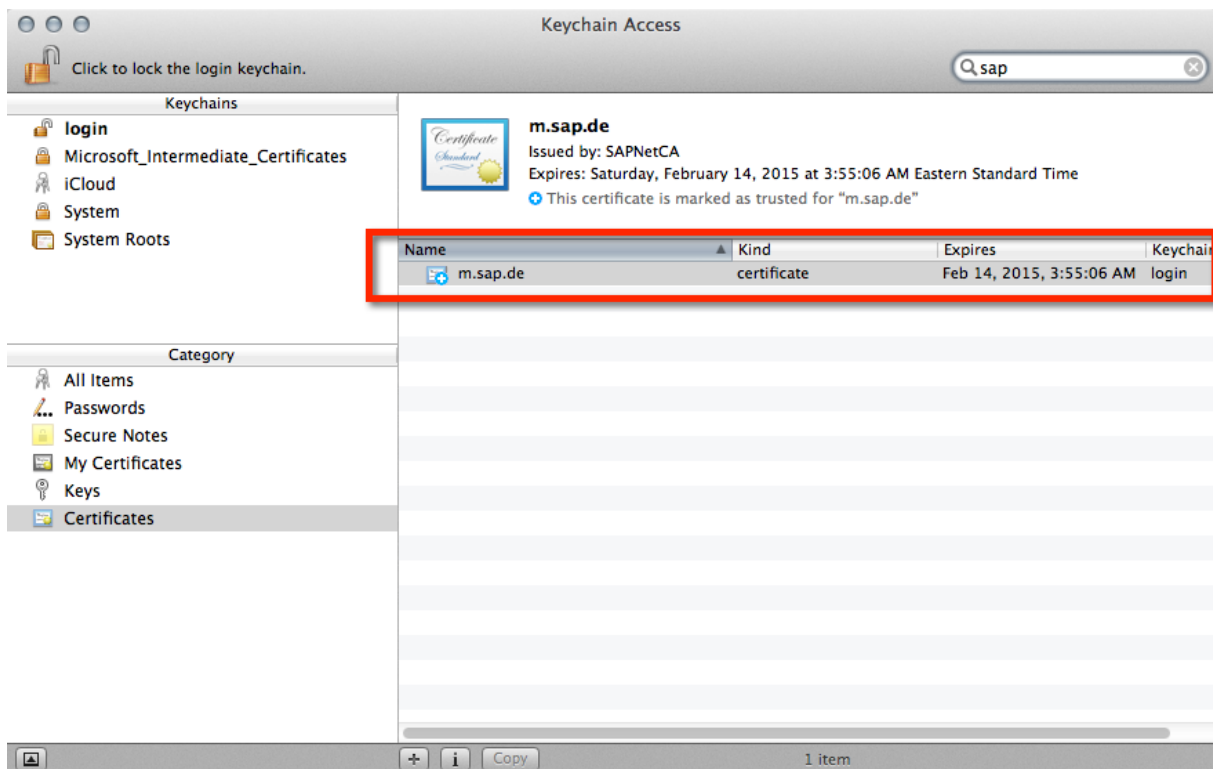


In the dialog that appears, check the [Always trust](#) checkbox, then click the [Continue](#) button.



You are prompted to provide the password for your keychain.

Open the keychain application and search for the SAP certificate.



Select the SAP certificate then open the [File](#) menu and select [Export Items](#). Save the certificate to a file, and email the certificate to your iOS device.

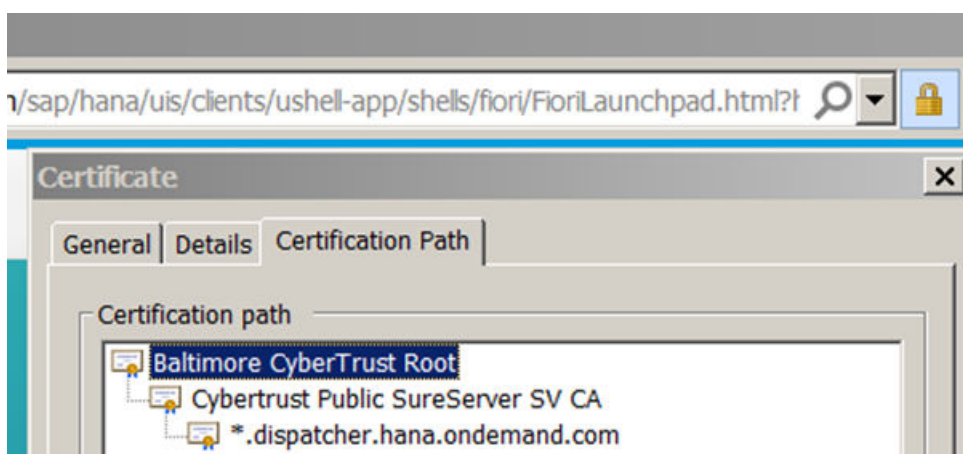
8.1.3 Installing a Certificate on an Android Device Using Windows

To install a certificate on an Android device:

Open the Fiori launchpad URL in Chrome or Internet Explorer.

Click on the [Lock](#) icon and choose view certificates.

Click on [Certification Path](#) and click on the top certificate.



Click on [Details](#) and press the [Copy to File...](#) button.

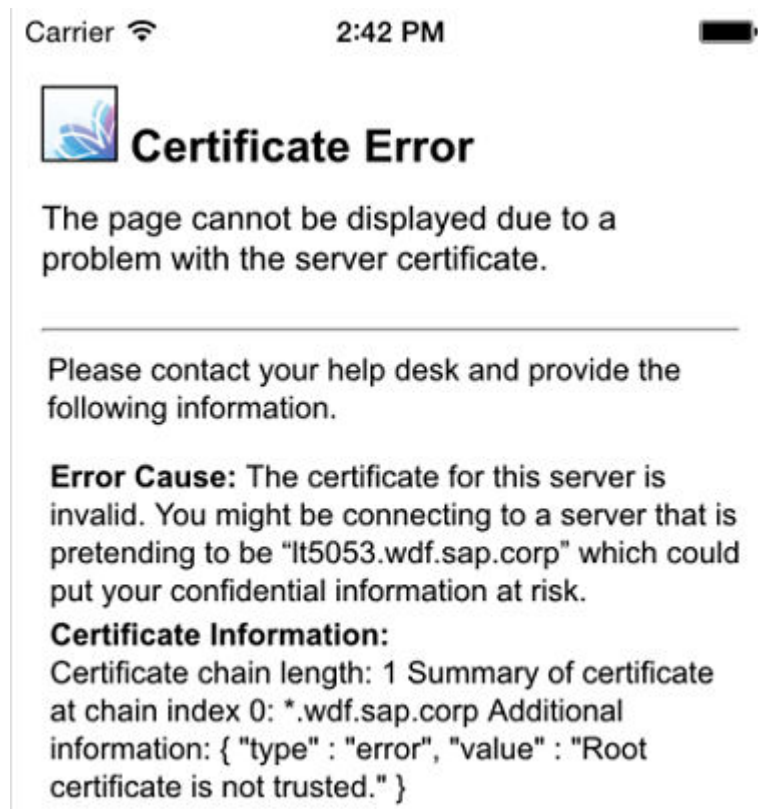
Export the certificate as **Base-64 encoded X.509**.

Attach the certificate to an email that can be opened on the device to install it.

9 Troubleshooting

If you encounter an error, review these troubleshooting sections for a possible solution.

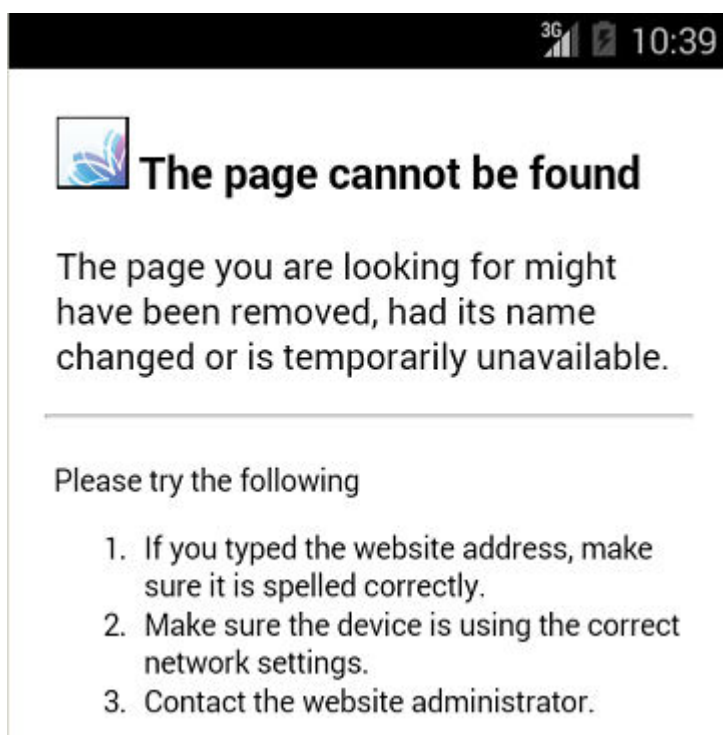
Symptom: you see an error page suggesting there is a certificate error as shown below.



Possible reasons:

- The server's SSL certificate is self-signed.
- The CA root used to sign the server certificate is unknown.

Symptom: you see an error page suggesting there is a connectivity error as shown below.



Possible reasons:

- The SAP Fiori URL is invalid or unreachable.
- A proxy or firewall is preventing the SAP Fiori Client from connecting with the Fiori server
- The Fiori server is unreachable through the configured wi-fi network.
- There is a network coverage issue.

Symptom: you see an error page suggesting there is a certificate error as shown below.

Possible reason: this may occur when Fiori is used with SAP Mobile Platform and SSO is not properly configured between SAP Mobile Platform and Fiori.

You may also review the following SAP Notes for known issues.

- [SAP Note 2120994](#) – Using SAML URL following "Clear All Application Settings" on Fiori Client for Android results in error.
- [SAP Note 2120995](#) – Use of proxy bypass on Fiori Client for Android results in "Page Not Found" error.
- [SAP Note 2122085](#) – Fiori Logoff does not work when proxying through SAP Mobile Platform.

Important Disclaimers and Legal Information

Coding Samples

Any software coding and/or code lines / strings ("Code") included in this documentation are only examples and are not intended to be used in a productive system environment. The Code is only intended to better explain and visualize the syntax and phrasing rules of certain coding. SAP does not warrant the correctness and completeness of the Code given herein, and SAP shall not be liable for errors or damages caused by the usage of the Code, unless damages were caused by SAP intentionally or by SAP's gross negligence.

Accessibility

The information contained in the SAP documentation represents SAP's current view of accessibility criteria as of the date of publication; it is in no way intended to be a binding guideline on how to ensure accessibility of software products. SAP in particular disclaims any liability in relation to this document. This disclaimer, however, does not apply in cases of wilful misconduct or gross negligence of SAP. Furthermore, this document does not result in any direct or indirect contractual obligations of SAP.

Gender-Neutral Language

As far as possible, SAP documentation is gender neutral. Depending on the context, the reader is addressed directly with "you", or a gender-neutral noun (such as "sales person" or "working days") is used. If when referring to members of both sexes, however, the third-person singular cannot be avoided or a gender-neutral noun does not exist, SAP reserves the right to use the masculine form of the noun and pronoun. This is to ensure that the documentation remains comprehensible.

Internet Hyperlinks

The SAP documentation may contain hyperlinks to the Internet. These hyperlinks are intended to serve as a hint about where to find related information. SAP does not warrant the availability and correctness of this related information or the ability of this information to serve a particular purpose. SAP shall not be liable for any damages caused by the use of related information unless damages have been caused by SAP's gross negligence or willful misconduct. All links are categorized for transparency (see: <http://help.sap.com/disclaimer>).



www.sap.com/contactsap

© 2015 SAP SE or an SAP affiliate company. All rights reserved.
No part of this publication may be reproduced or transmitted in any form or for any purpose without the express permission of SAP SE or an SAP affiliate company. The information contained herein may be changed without prior notice.
Some software products marketed by SAP SE and its distributors contain proprietary software components of other software vendors. National product specifications may vary.
These materials are provided by SAP SE or an SAP affiliate company for informational purposes only, without representation or warranty of any kind, and SAP or its affiliated companies shall not be liable for errors or omissions with respect to the materials. The only warranties for SAP or SAP affiliate company products and services are those that are set forth in the express warranty statements accompanying such products and services, if any. Nothing herein should be construed as constituting an additional warranty.
SAP and other SAP products and services mentioned herein as well as their respective logos are trademarks or registered trademarks of SAP SE (or an SAP affiliate company) in Germany and other countries. All other product and service names mentioned are the trademarks of their respective companies.
Please see <http://www.sap.com/corporate-en/legal/copyright/index.epx> for additional trademark information and notices.